

GPS/NGS CONTROL POINTS

RANDOLPH CORS ARP

PID DJ8951
 N = 524583.45
 E = 1613157.07
 ELLIP HEIGHT = 1329.21

STATION IS A GPS CONTINUOUSLY OPERATING REFERENCE STATION. STATION IS THE ANTENNA REFERENCE POINT OF THE GPS ANTENNA. THE ANTENNA IS MOUNTED ON THE ROOF OF GREEN HALL, ON THE CAMPUS OF VERMONT TECHNICAL COLLEGE, RANDOLPH, VT. THE MONUMENT IS ATTACHED TO A TWO STORY CONCRETE/BRICK BUILDING WITH A 10 FT CONCRETE FOUNDATION BUILT IN 1969. MAST IS A 1.75 INCH DIA GALV PIPE THAT IS 108 INCHES LONG. THE MAST ATTACHED TO A STEEL MOUNTING FRAME WITH THREE ATTACHMENTS CONSISTING OF 3/8 INCH SS THROUGH BOLTS. THE MOUNTING FRAME IS ATTACHED TO THE BUILDING USING 8 ATTACHMENT POINTS. THE TOP 2 AND BOTTOM 2 ARE 1/2 INCH SS BOLTS SECURED TO THE BRICK OR CONC WITH LEAD ANCHORS. THE MIDDLE 4 ATTACHMENTS ARE THROUGH BOLTED AND CONSIST OF 1/2 INCH SS THREADED ROD AND NUTS.

USGS DISK 5 AIM

PID AB4450
 N = 488768.29
 E = 1517165.92
 ELEV = 2182.88

DESCRIBED BY VERMONT AGENCY OF TRANSPORTATION 1995 (CHR). GENERAL LOCATION, AT BRANDON GAP, VT. TO REACH FROM THE INTERSECTION OF VT ROUTES 73 AND 53 IN FORESTDALE GO EAST ALONG VT ROUTE 73 FOR 4.9 MI (7.9 KM) TO THE LONG TRAIL PARKING LOT ON THE RIGHT. CONTINUE STRAIGHT AHEAD ON VT ROUTE 73 FOR 0.1 MI (0.2 KM) TO THE INTERSECTION OF THE LONG TRAIL AT THE SUMMIT OF BRANDON GAP AND THE MARK ON THE LEFT. IT IS 9.2 MI (14.8 KM) WEST ALONG VT ROUTE 73 FROM ITS INTERSECTION WITH VT ROUTE 100 IN ROCHESTER. THE MARK IS SET IN THE TOP OF A 1.4 M (4.6 FT) X 1.8 M (5.9 FT) BOULDER WHICH PROJECTS ABOUT 0.4 M (1.3 FT) ABOVE GROUND SURFACE. IT IS 20.9 M (68.6 FT) NORTHEAST OF AND ABOUT 5 M (16.4 FT) HIGHER THAN THE CENTERLINE OF VT ROUTE 73, 5.4 M (17.7 FT) NORTHEAST OF THE CENTER OF THE LONG TRAIL, 21.1 M (69.2 FT) SOUTHEAST OF THE SOUTHEAST END OF A LONG TRAIL NORTH SIGN, 40.0 M (131.2 FT) SOUTHEAST OF POLE NO.121, 40.1 M (131.6 FT) NORTHWEST OF POLE NO.122, 2.8 M (9.2 FT) SOUTHWEST OF A 10 CM SQUARE CONCRETE HIGHWAY BOUND, AND 0.8 M (2.6 FT) NORTHEAST OF A FIBERGLASS WITNESS POST.

USGS DISK 6 AIM

PID GS0287
 N = 491705.47
 E = 1527612.26
 ELEV = 1552.79

GENERAL LOCATION, BRANDON GAP, 2.2 MI (3.5 KM) NORTHEAST OF, ALONG STATE HIGHWAY 73, 45 FT (13.7 M) NORTHWEST OF, AND 2 FT (0.6 M) HIGHER THAN CENTERLINE OF HIGHWAY, 51 FT (15.5 M) NORTHEAST OF NORTH END OF CULVERT, IN ROCK LEDGE.

VTDH DISK CHITT BRK

PID AE3604
 N = 493332.17
 E = 1535632.40
 ELEV = 1178.81

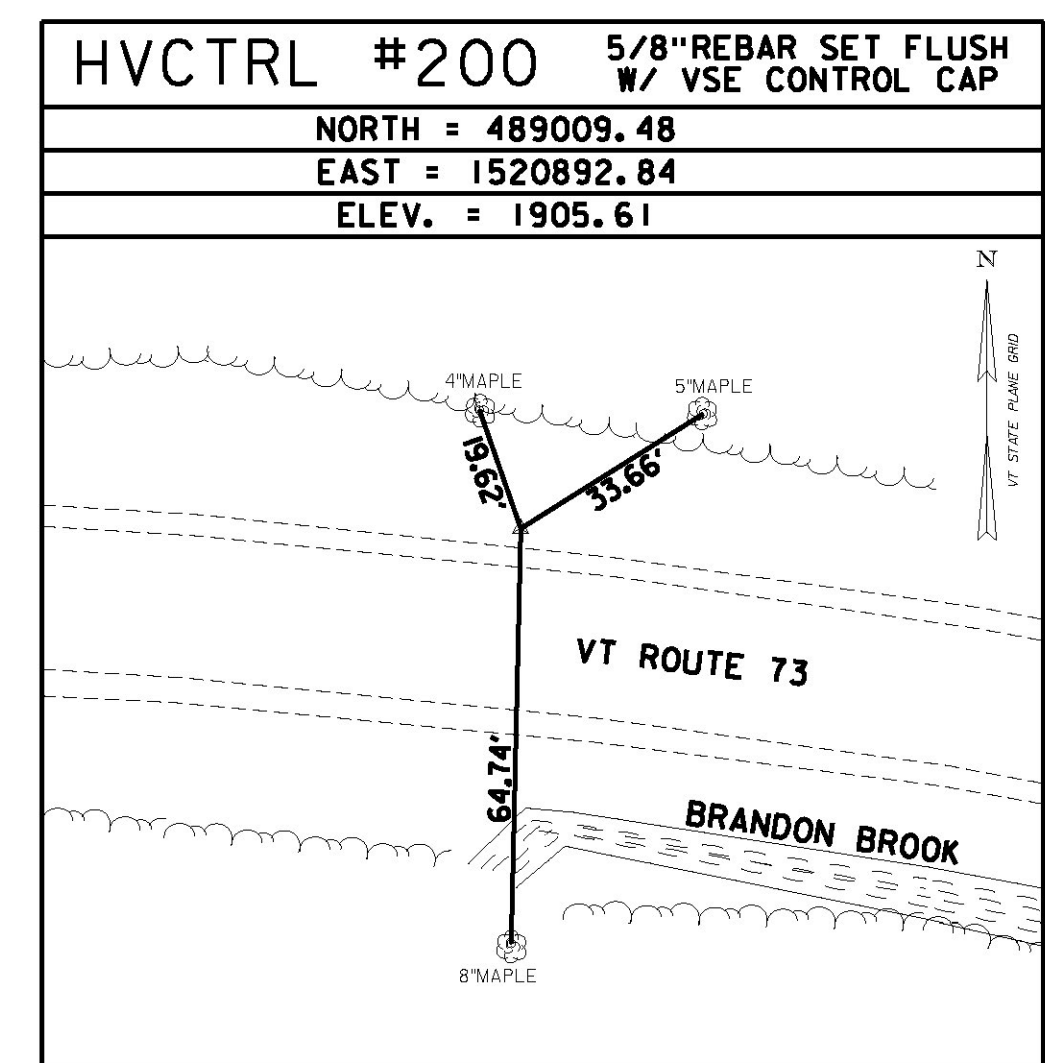
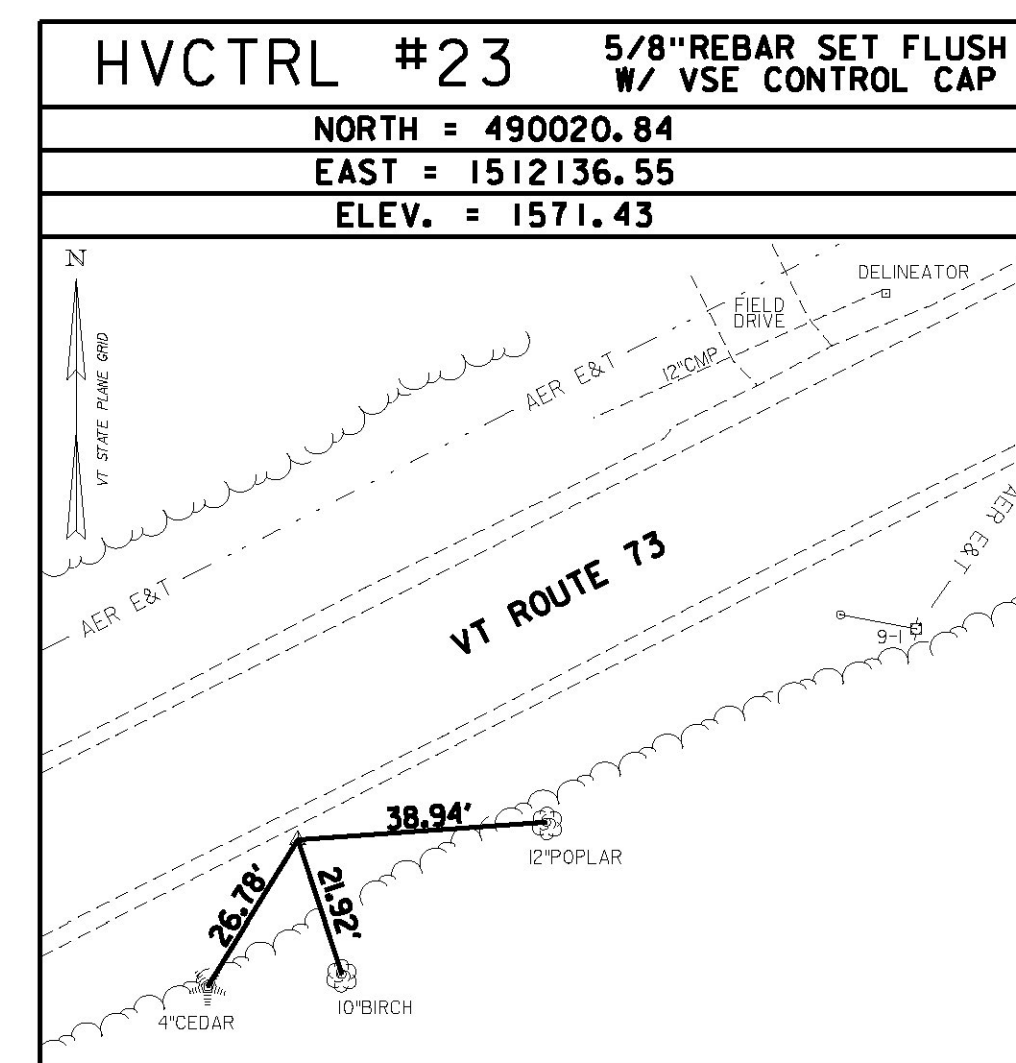
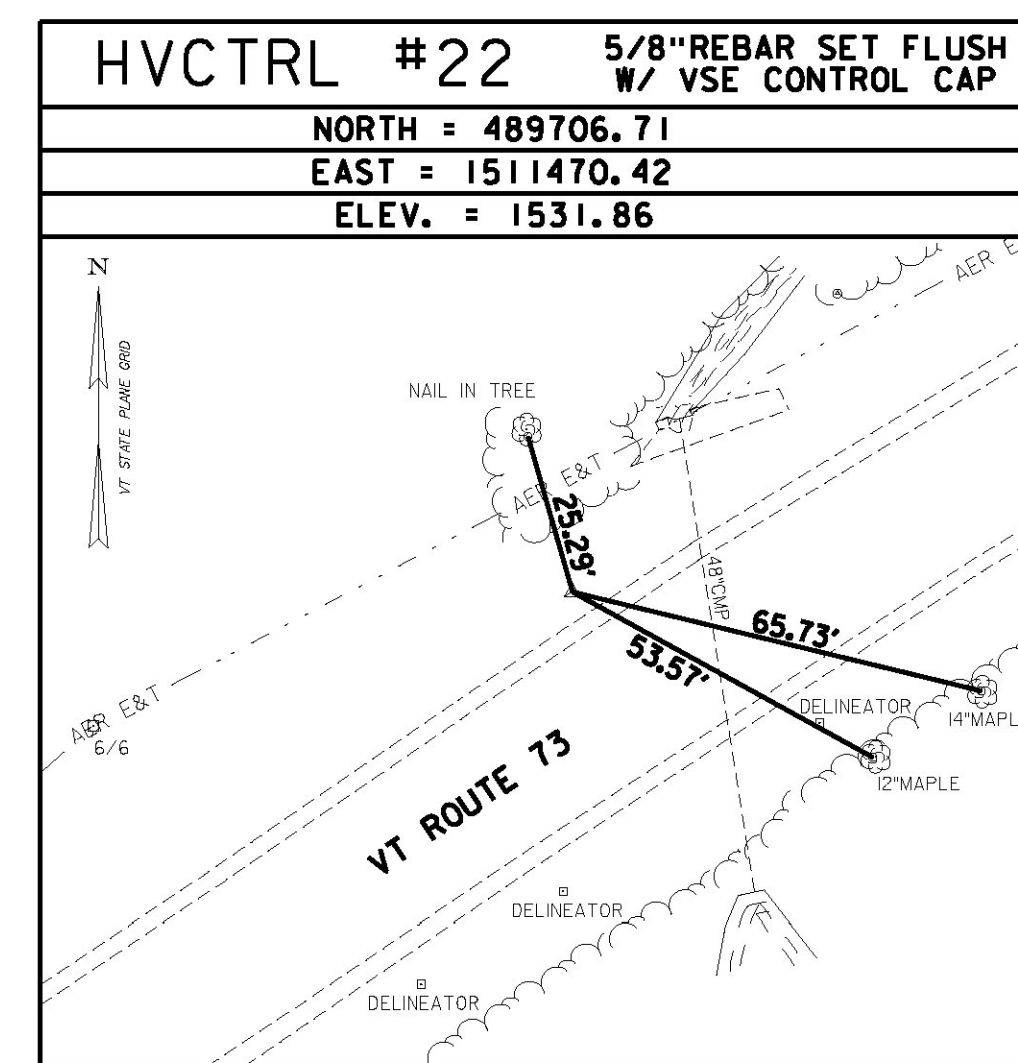
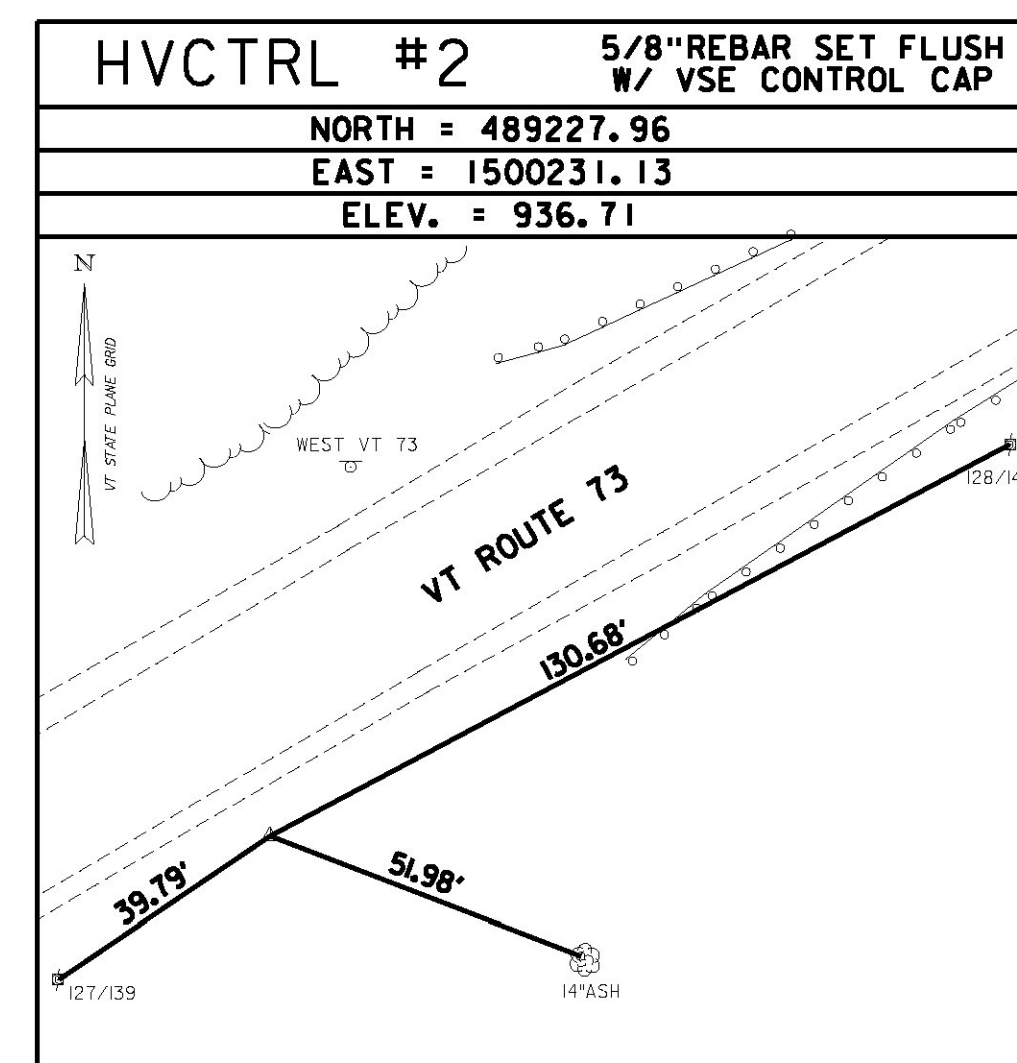
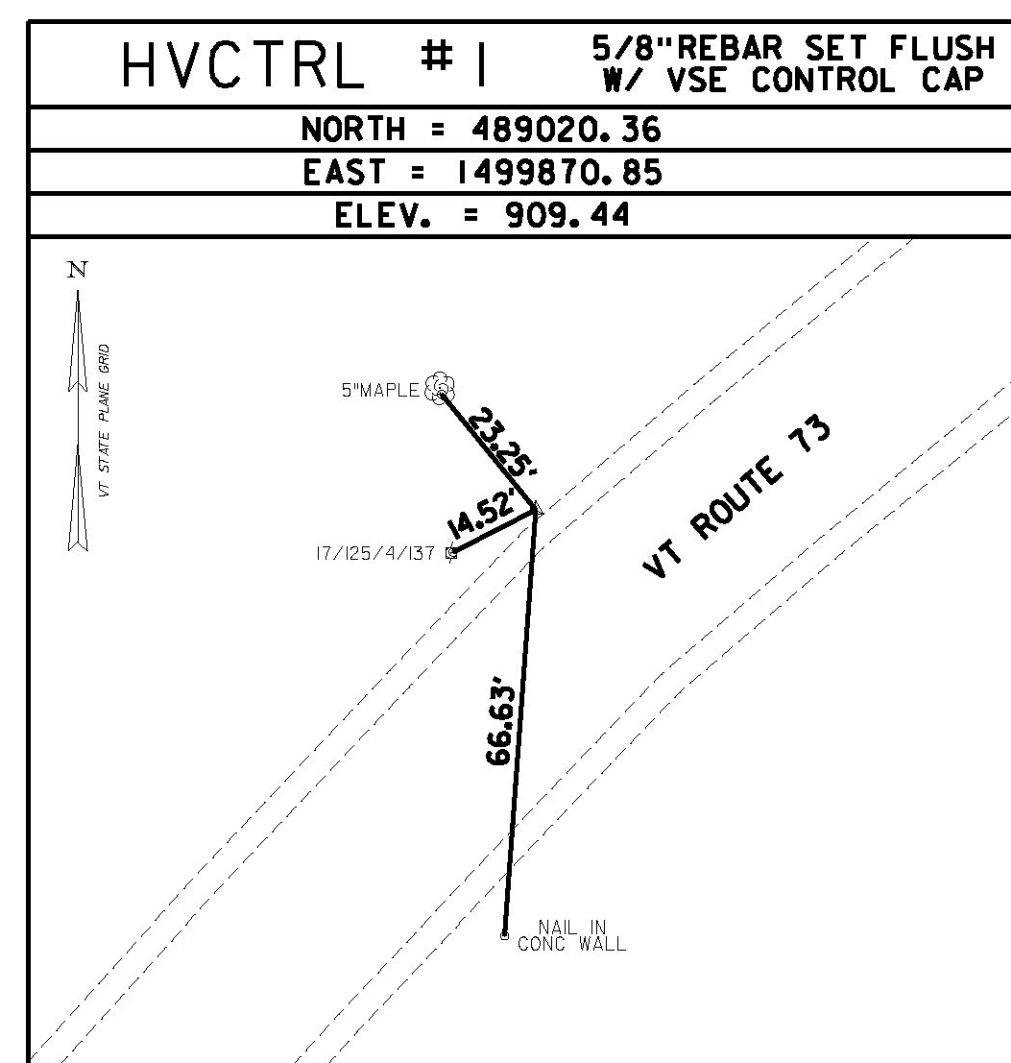
DESCRIBED BY VERMONT AGENCY OF TRANSPORTATION 1996 (DJM). GENERAL LOCATION - ROCHESTER. TO REACH FROM THE INTERSECTION OF VT ROUTES 107 AND 73 IN TALCVILLE, GO WEST ALONG VT ROUTE 73 FOR 5.2 MI (8.4 KM) TO THE ROUTE 73 BRIDGE OVER SMITH BROOK AT ITS JUNCTION WITH CHITTENDEN BROOK AND THE MARK ON THE LEFT SET IN THE SOUTH END OF THE EAST ABUTMENT.

VTGS DISK ROBINSON

PID BBCK12
 N = 494869.70
 E = 1543279.24
 ELEV = 983.83

ROCHESTER, VT. OWNERSHIP, RAY GENDRON, 3425 BRANDON MOUNTAIN ROAD, ROCHESTER, VT 05767. THE MARK IS SET 10 CM BELOW GROUND SURFACE IN THE TOP OF A 30 CM DIAMETER CONCRETE MONUMENT. IT IS 9.0 M NORTHEAST OF AND 1 M LOWER THAN THE CENTERLINE OF VT ROUTE 73, 4.2 M NORTHWEST OF THE CENTERLINE OF A FIELD DRIVE, 2.8 M SOUTH OF THE CENTER OF THE NORTHEAST (OUTLET) END OF A 45 CM DIAMETER PLASTIC CULVERT WITH MARKER POST AND 17.8 M SOUTHWEST OF POLE NO 104/106.

TRAVERSE TIES



• MAIN TRAVERSE COMPLETED JANUARY 18, 2013 BY VSE, T. CATTANEO-PC, R. GAUVIN

DATUM	
VERTICAL	NAVD 88 FT
HORIZONTAL	NAD 83(2011) 6FT
ADJUSTMENT	LSQ



PROJECT NAME: ROCHESTER	
PROJECT NUMBER: ER STP 0162(21)	
FILE NAME: z13cl76bl+0L.dgn	PLOT DATE: 1/11/2017
PROJECT LEADER: D. GOZALKOWSKI	DRAWN BY: J. HEALD
DESIGNED BY: J. OLSEN	CHECKED BY: J. SHIELDS
TIE SHEET #1	SHEET 4 OF 360