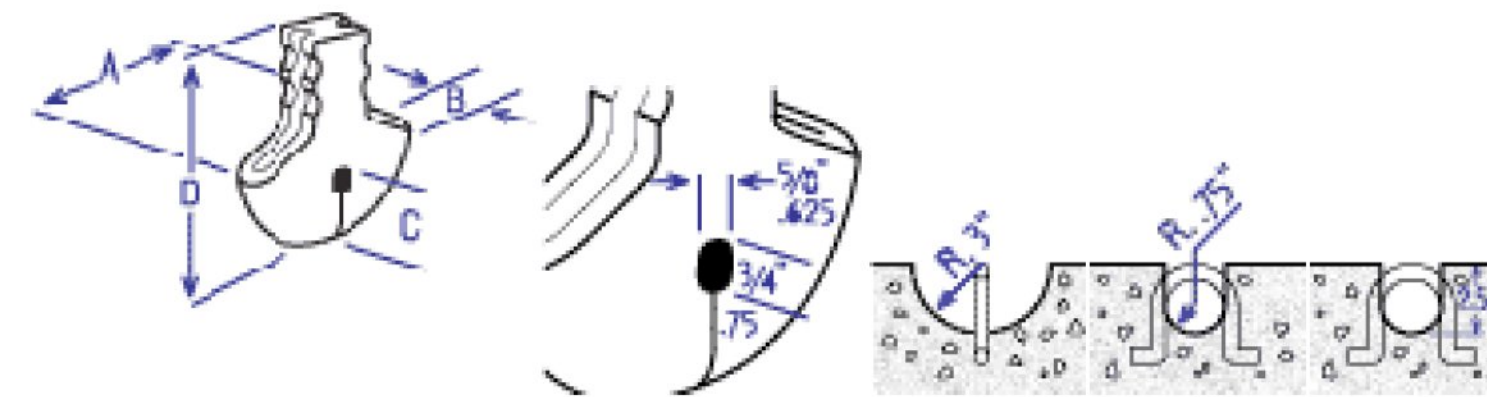
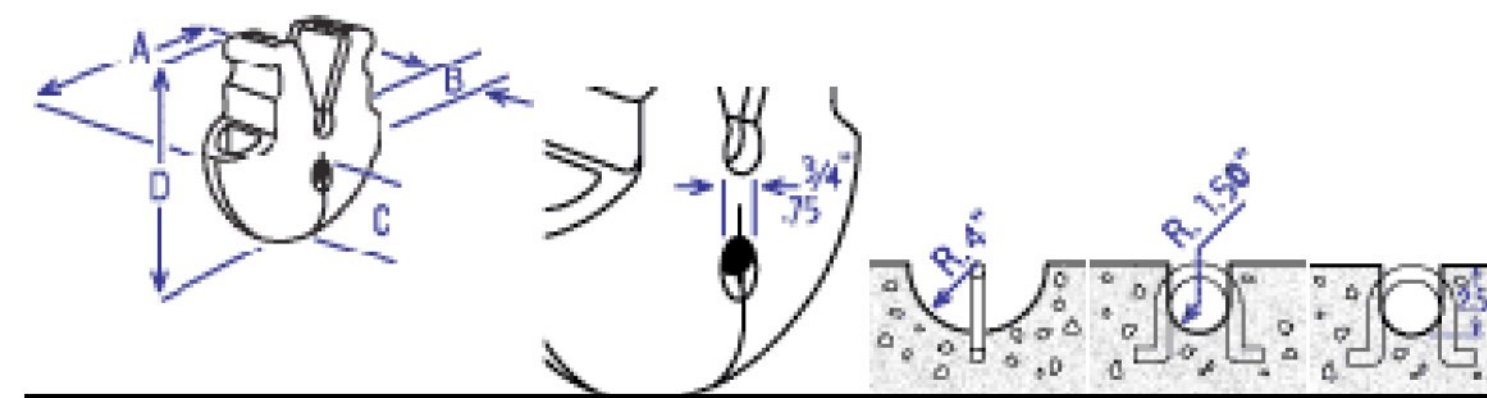


	Plate)					
	SMP 750 (Snap-On Mounting Plate)	7.25"	2.25"	(3/8") .375"	2.25"	1.75 lbs.
	MMP 750 (Magnetic Mounting Plate)	7.25"	2.25"	(3/8") .375"	2.25"	2.00 lbs.
Original Sink-It	Product Code	A	B	C	D	Unit Weight
	S 150	6.00"	1.50"	2.50"	6.75"	1.50 lbs.



	Product Code	A	B	C	D	Unit Weight
S-300 Sink-It	S 300	8.00"	3.00"	3.50"	8.00"	4.00 lbs.



[<back](#) [next>](#)

Home	B-500 & B-750	S-150	S-300	Lift Anchor & Order Form	Concrete Products
Pull Iron Capacity	Anchors & Accessories	Toggle-Lok	Insert/Lift Anchor	Grid-Lok/Rebar Chair	Helpful Calculations <small>COMING SOON!</small>