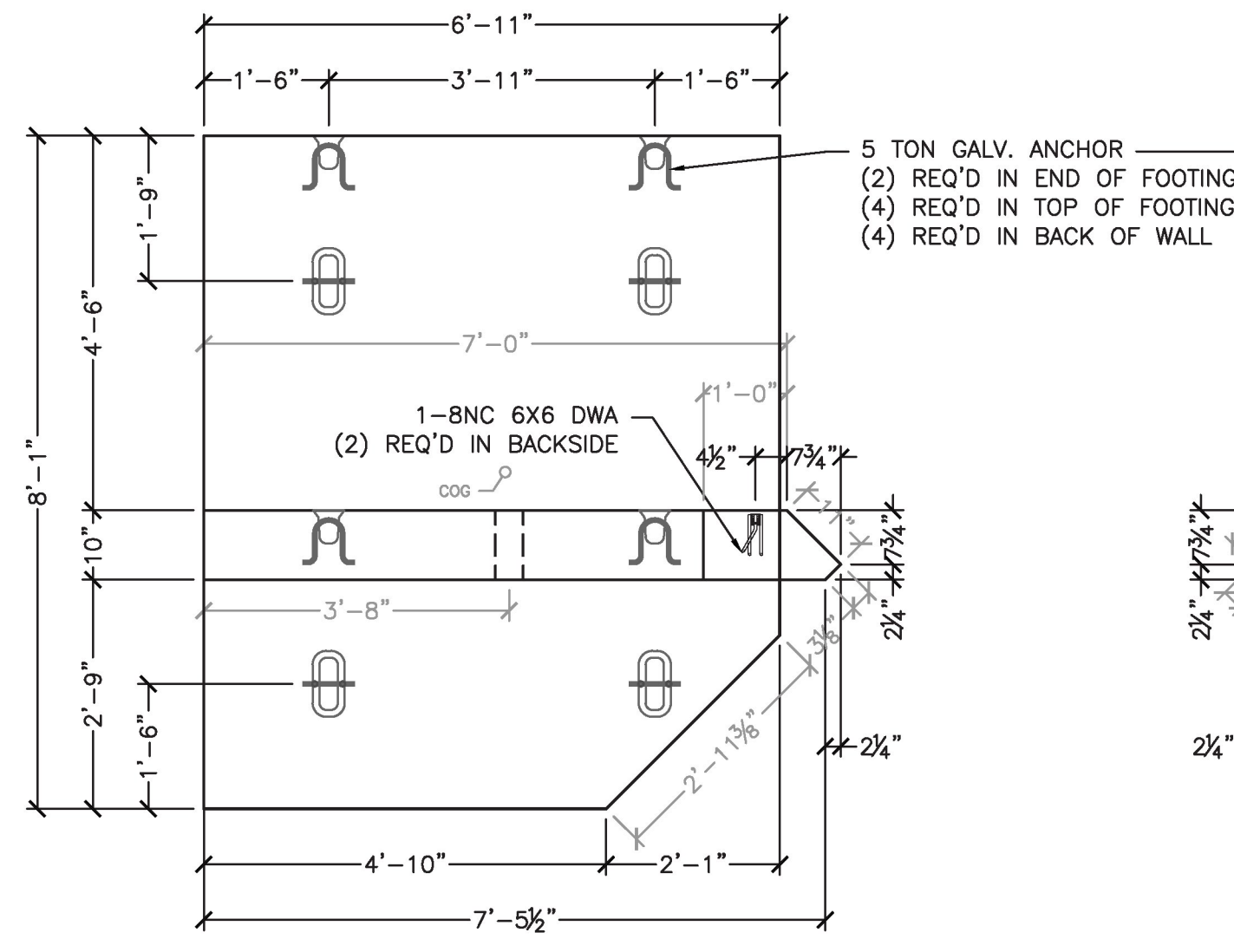


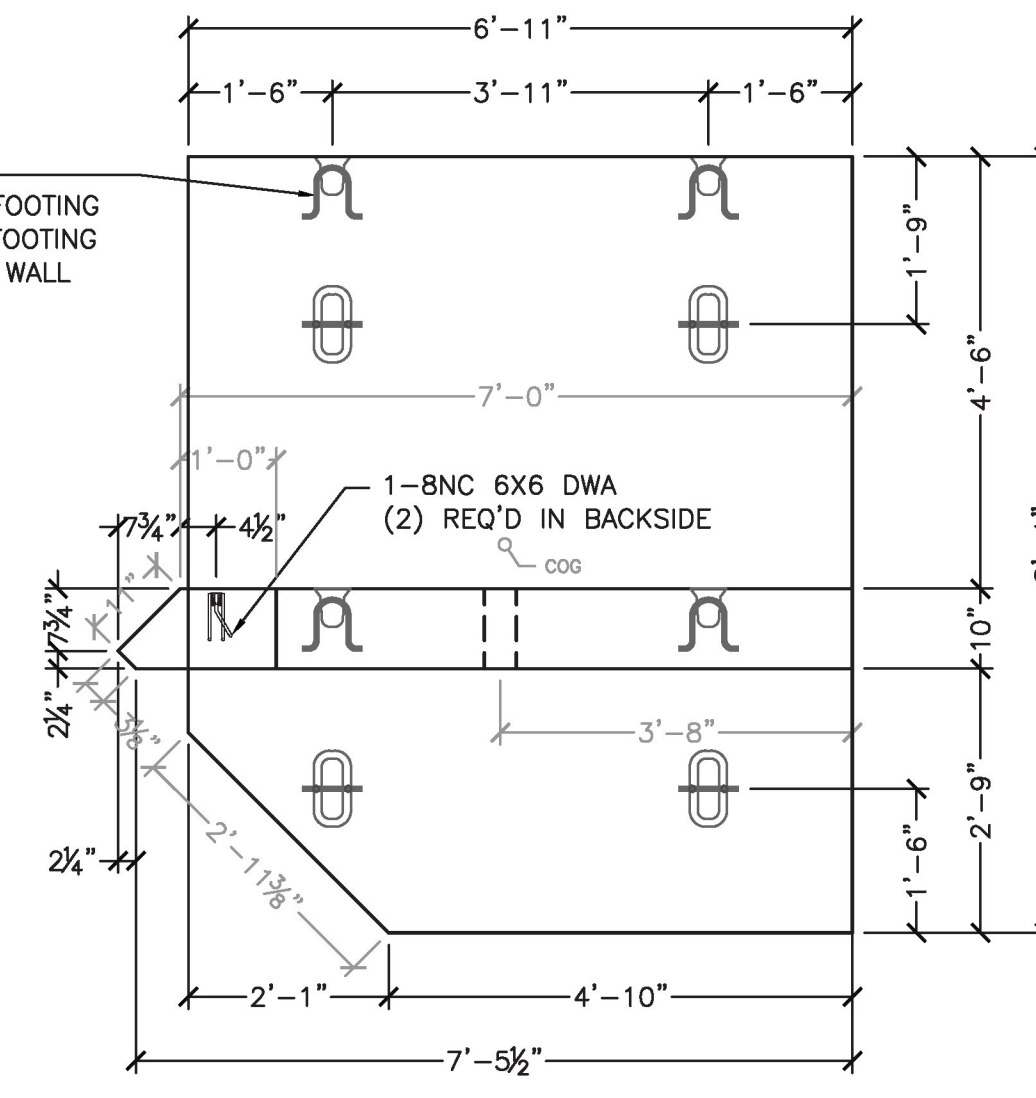
1 HW1 PLAN VIEW
S2.0
1/2" = 1'-0"

HW1 - 1 REQ'D
ITEM NUMBER: 275600
UNIT WEIGHT AND VOLUME:
FOOTING: 3.08CY (12,940#)
WALL: 2.47CY (10,370#)
TOTAL WEIGHT: 23,310#



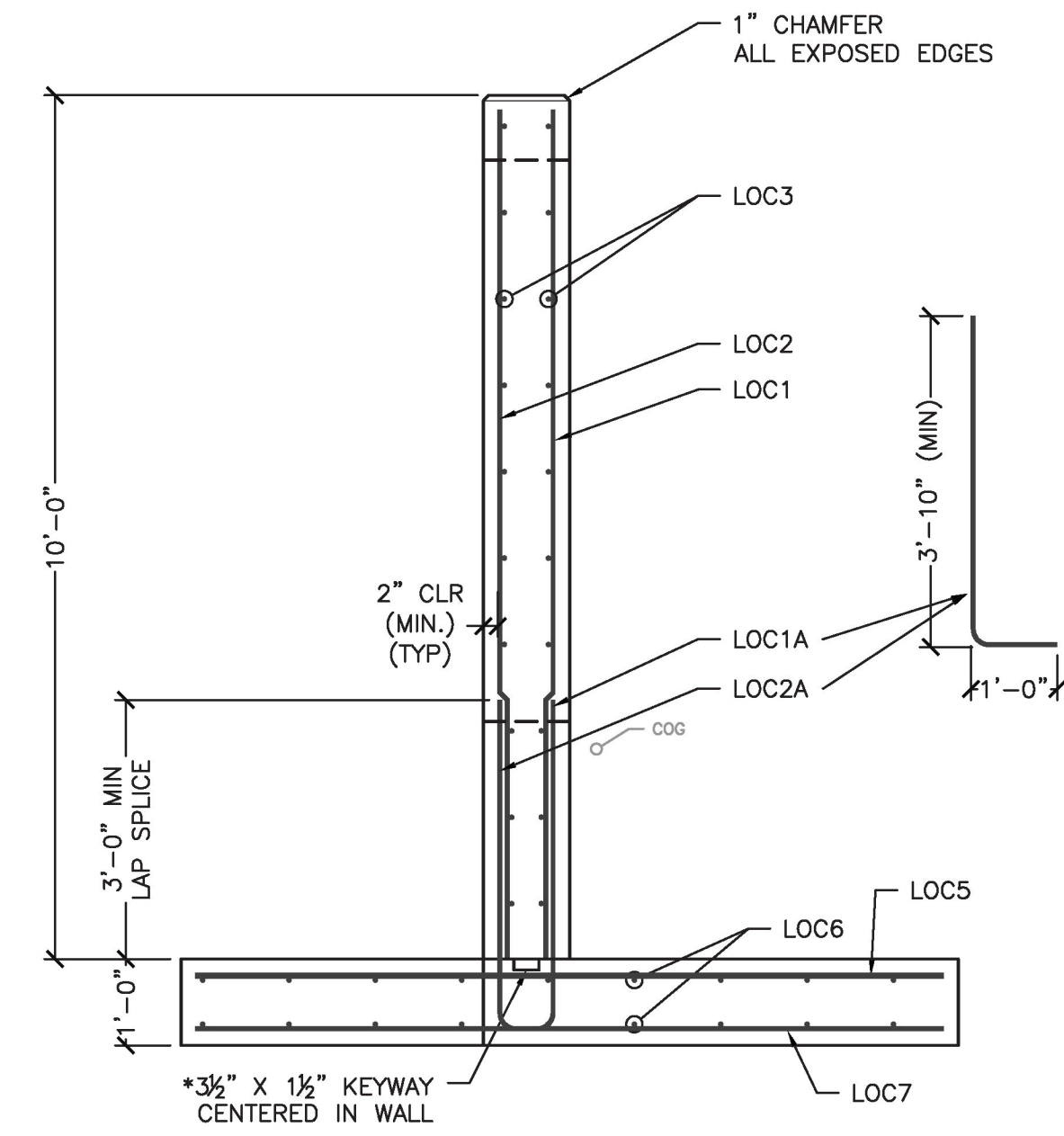
4 WW1 PLAN VIEW
S2.0
1/2" = 1'-0"

WW1 - 1 REQ'D
ITEM NUMBER: 275600
UNIT WEIGHT AND VOLUME:
FOOTING: 2.00CY (8,400#)
WALL: 2.09CY (8,820#)
TOTAL WEIGHT: 17,220#



6 WW2 PLAN VIEW
S2.0
1/2" = 1'-0"

WW2 - 1 REQ'D
ITEM NUMBER: 275600
UNIT WEIGHT AND VOLUME:
FOOTING: 2.00CY (8,400#)
WALL: 2.09CY (8,820#)
TOTAL WEIGHT: 17,220#

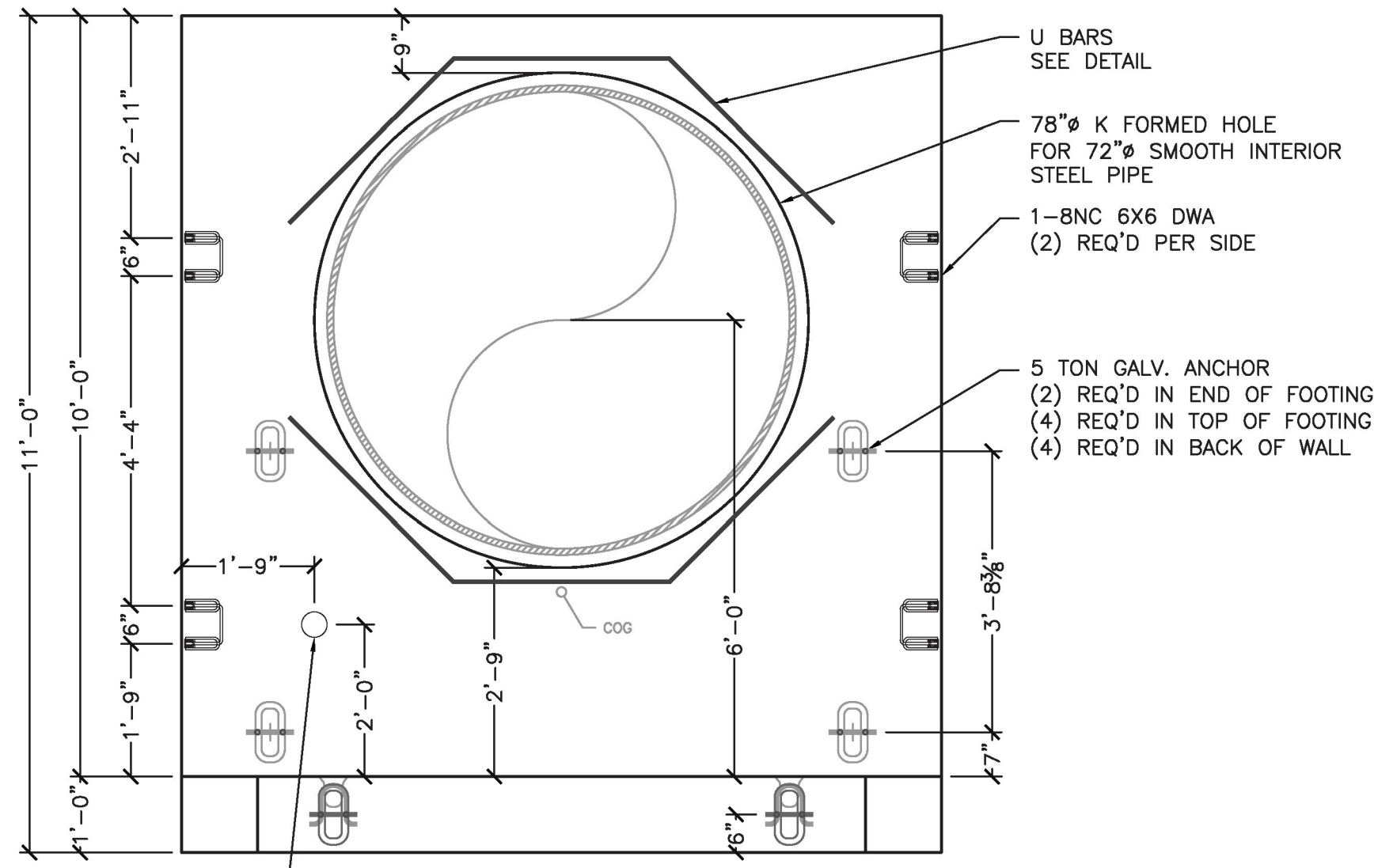


3 HW1 REINFORCING SECTION
S2.0
1/2" = 1'-0"

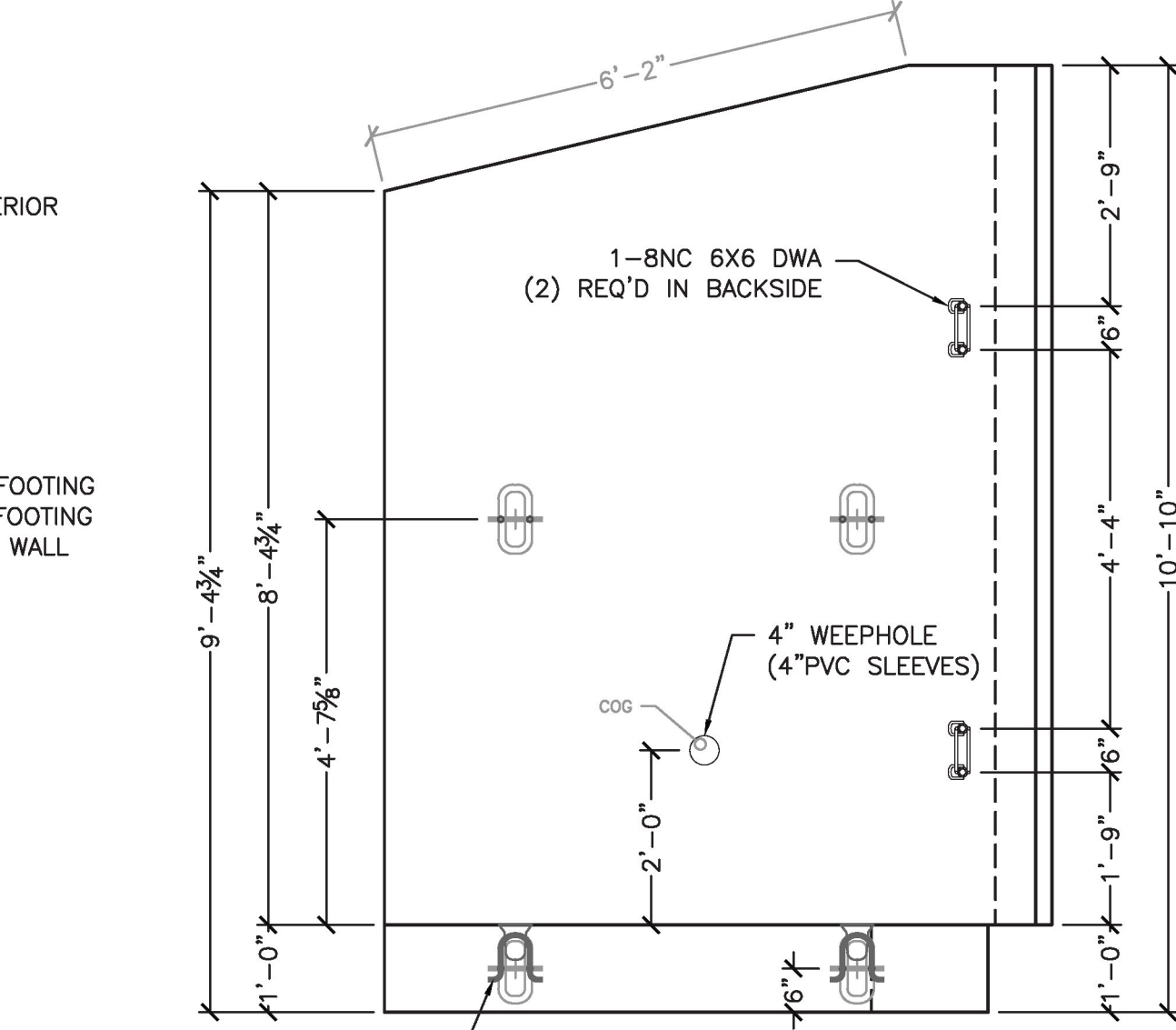
HW REINFORCING SCHEDULE

MARK	TYPE	SIZE	SPACING	QTY	LENGTH
LOC1	STR	** #6	8"	15	9'-10"
LOC1A	LBAR	#6	8"	15	4'-9"
LOC2	STR	** #4	12"	10	9'-10"
LOC2A	LBAR	#4	12"	10	4'-9"
LOC3	STR	#4	12"	20	8'-8"
LOC5	STR	#6	10"	12	8'-8"
LOC6	STR	#4	12"	20	8'-8"
LOC7	STR	#4	10"	12	8'-8"

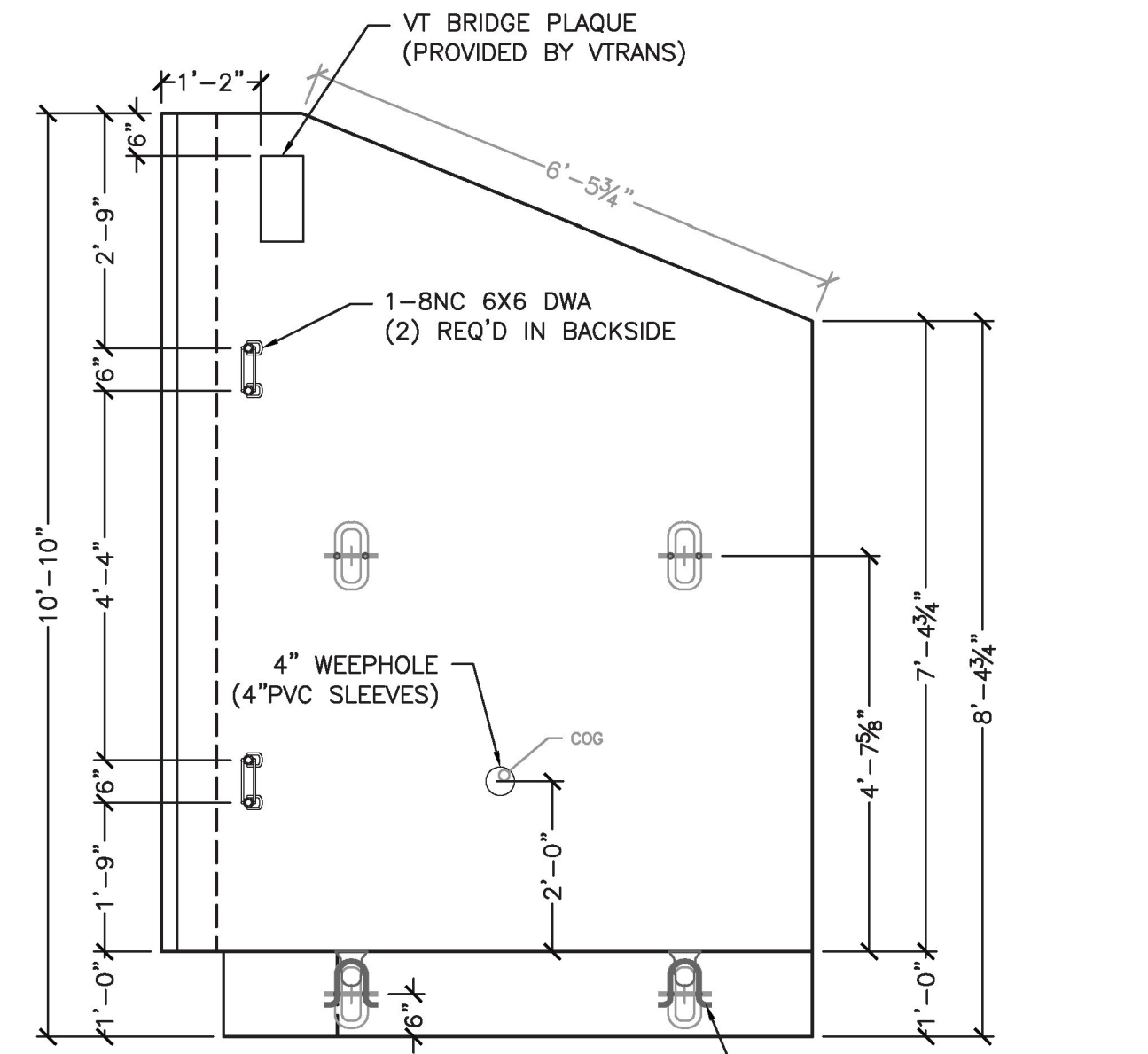
** TWO EXTRA BARS WILL BE NEEDED. EACH SIZE FOR SAMPLING.



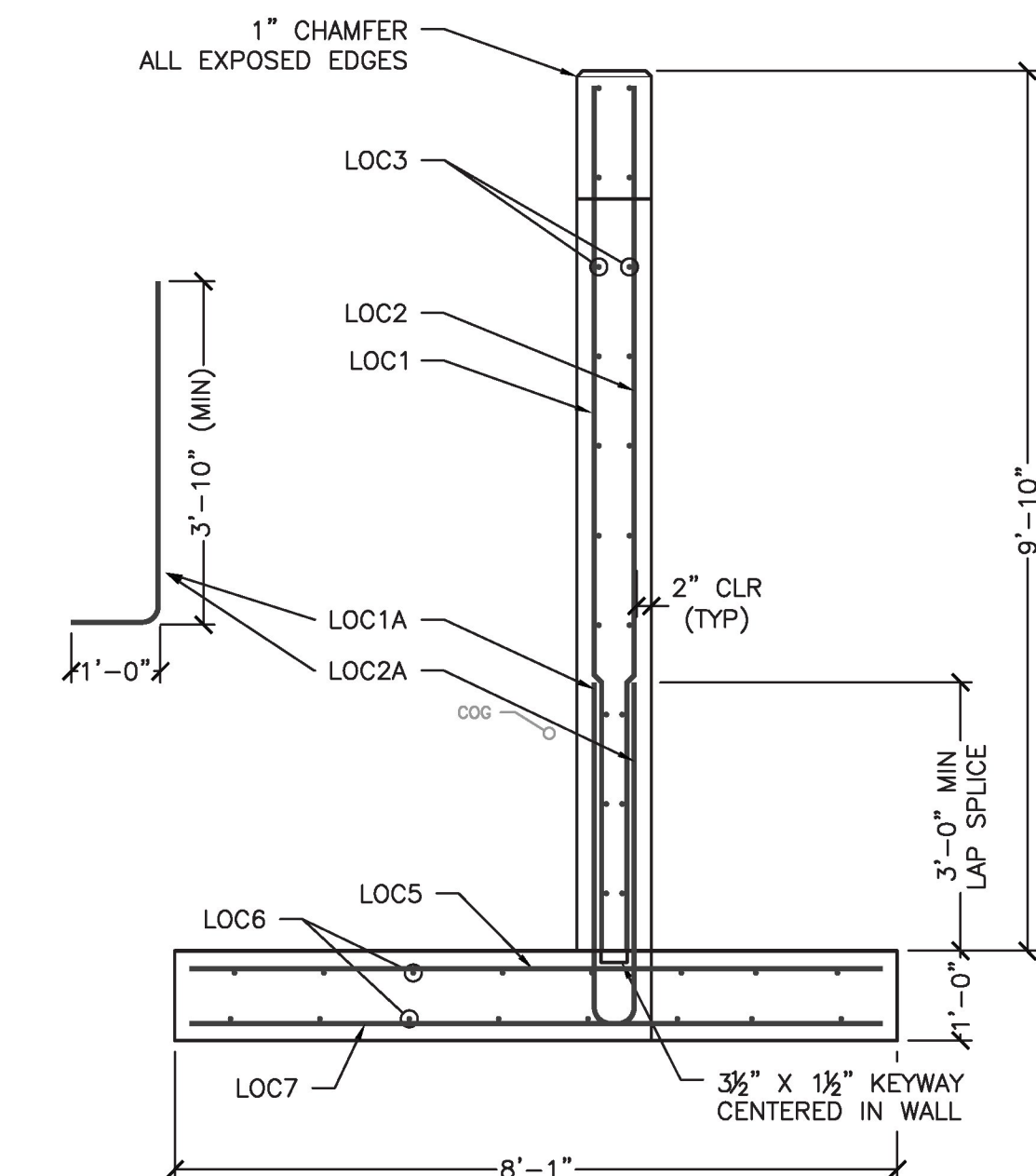
2 HW1 ELEV. VIEW
S2.0
1/2" = 1'-0" (Looking @ Front)



5 WW1 ELEV. VIEW
S2.0
1/2" = 1'-0" (Looking @ Front)



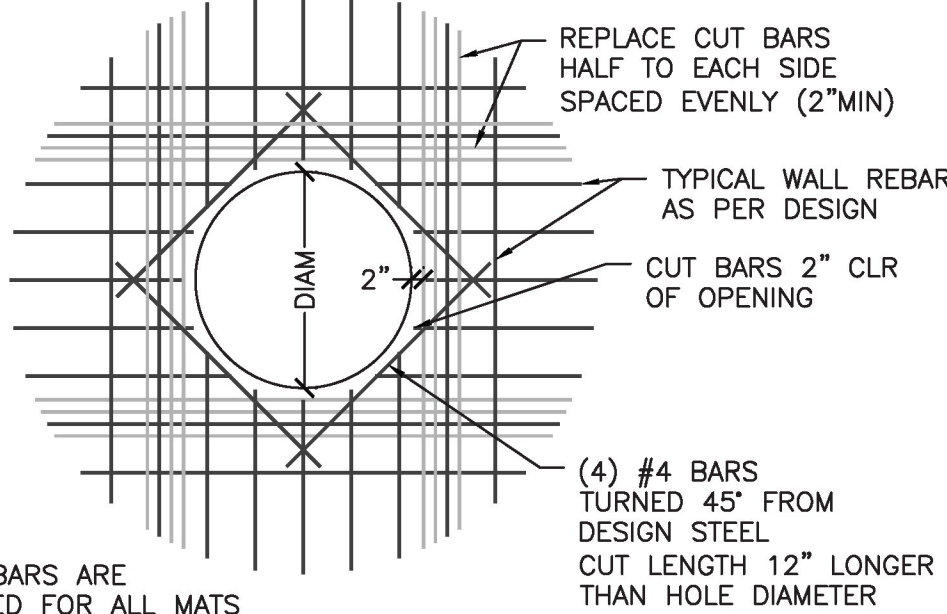
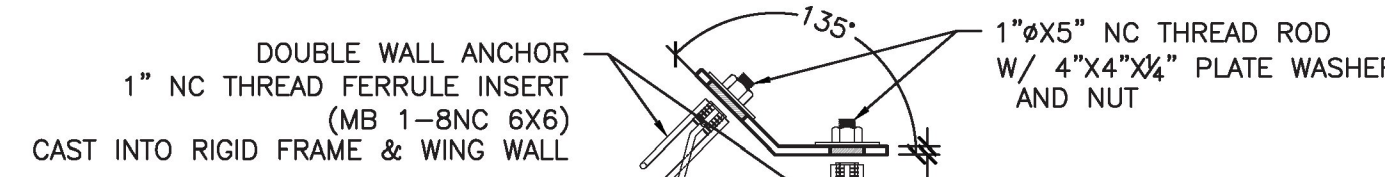
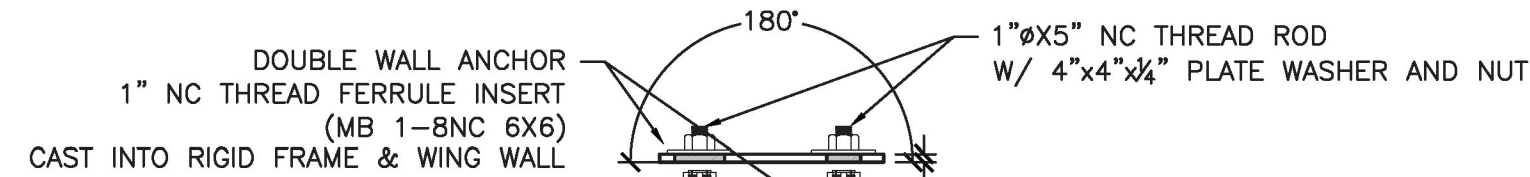
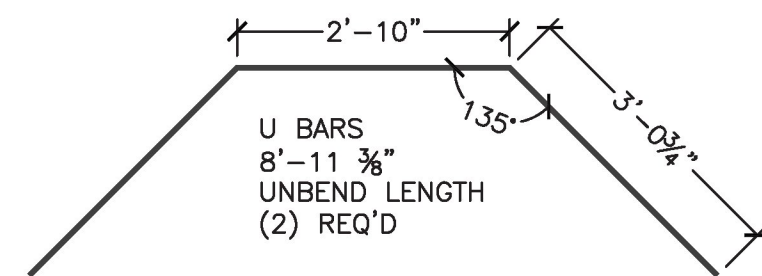
7 WW2 ELEV. VIEW
S2.0
1/2" = 1'-0" (Looking @ Front)



8 WW REINFORCING SECTION
S2.0
1/2" = 1'-0"

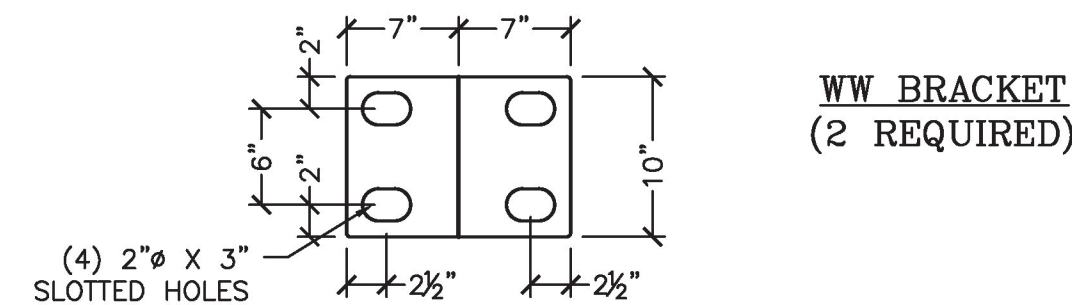
WW REINFORCING SCHEDULE

MARK	TYPE	SIZE	SPACING	QTY	LENGTH
LOC1	STR	#5	8"	11	9'-8"
LOC1A	LBAR	#5	8"	11	4'-9"
LOC2	STR	#4	12"	7	9'-8"
LOC2A	LBAR	#4	12"	7	4'-9"
LOC3	STR	#4	12"	20	7'-4" OF / 6'-10" IF
LOC5	STR	#5	8"	10	7'-9"
LOC6	STR	#4	12"	16	6'-7"
LOC7	STR	#4	12"	7	7'-9"



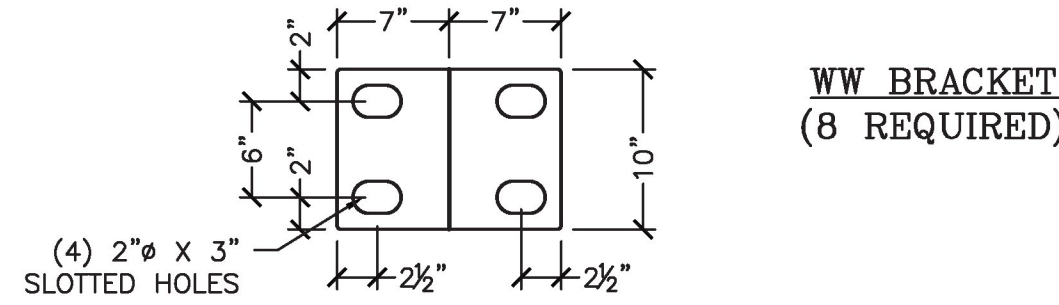
NOTE: EXTRA BARS ARE REQUIRED FOR ALL MATS

9 TYPICAL REINFORCEMENT AT HOLE
S2.0
3/8" = 1'-0"



PLATES TO BE MADE OF MILD STEEL, PLASMA CUT, AND BENT AS REQUIRED. (HOT DIPPED GALVANIZED AFTER BENDING)

10 WINGWALL BRACKET DETAIL
S2.0
1" = 1'-0"



PLATES TO BE MADE OF MILD STEEL, PLASMA CUT, AND BENT AS REQUIRED. (HOT DIPPED GALVANIZED AFTER BENDING)

11 WINGWALL BRACKET DETAIL
S2.0
1" = 1'-0"

No.	Date	Revision
XXX		By
XX		XX
XX		XX

MICHIE
CONSULTANTS
INCORPORATED
PROFESSIONAL ENGINEER
173 BUXTON INDUSTRIAL DRIVE - PO BOX 870
HENNIKER, NH 03242
PHONE 603-498-3218
WWW.MICHIEGRP.COM

VT Route 78 - VAOT # STP SCRIP (12)
Higgate, VT
Inlet End Headwall Details
Project No. 7910
Date: 3/7/2017
Drawn by: CJP
Checked by: Delta
Scale: AS SHOWN

Prepared for:
Casella Construction, Inc.
25 Industrial Ave.
Mendon, VT 05701