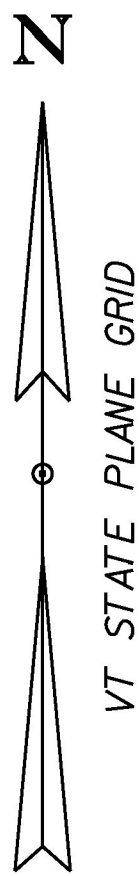
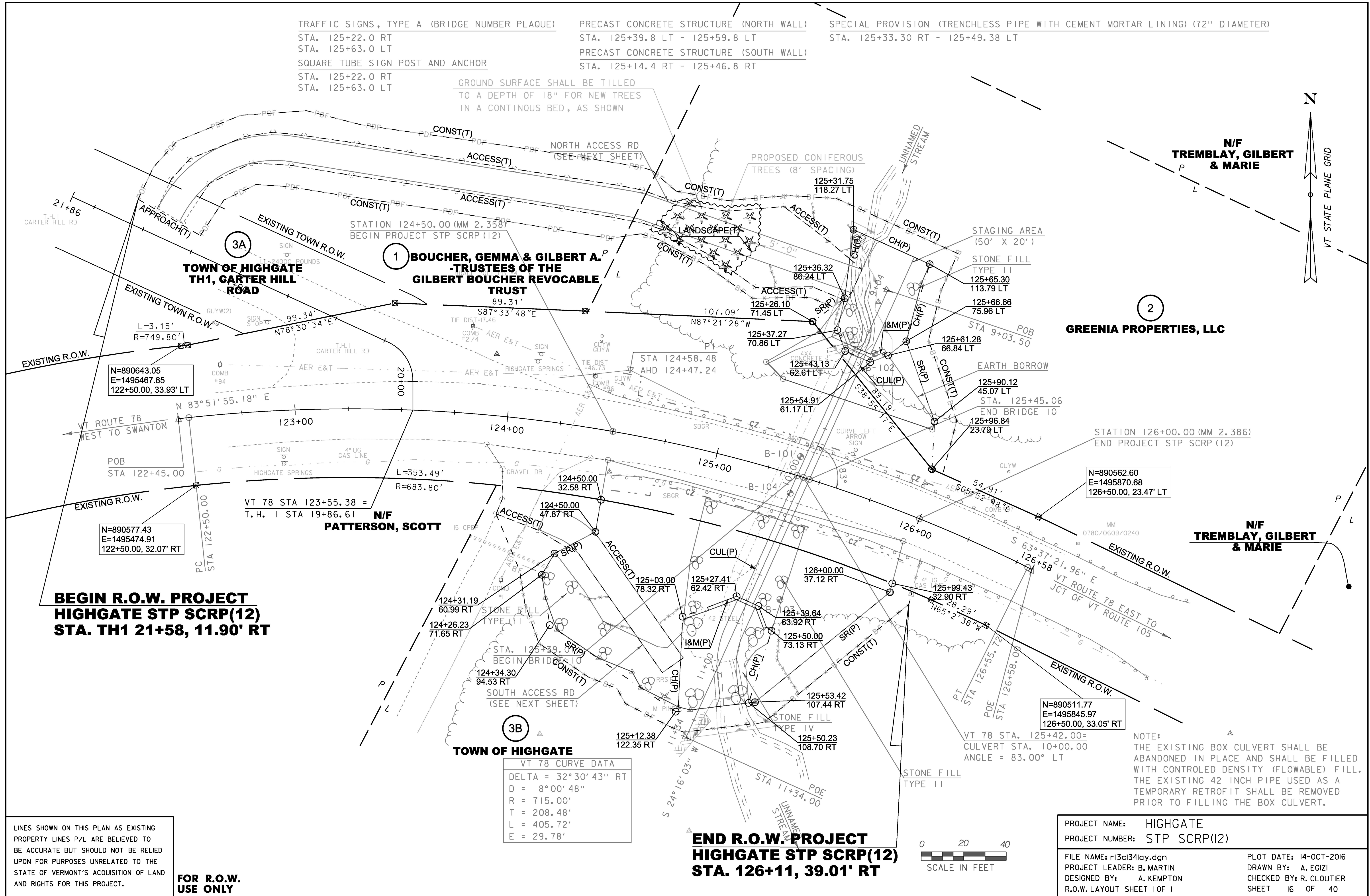


TRAFFIC SIGNS, TYPE A (BRIDGE NUMBER PLAQUE)
 STA. 125+22.0 RT
 STA. 125+63.0 LT
 SQUARE TUBE SIGN POST AND ANCHOR
 STA. 125+22.0 RT
 STA. 125+63.0 LT

PRECAST CONCRETE STRUCTURE (NORTH WALL)
 STA. 125+39.8 LT - 125+59.8 LT
 PRECAST CONCRETE STRUCTURE (SOUTH WALL)
 STA. 125+14.4 RT - 125+46.8 RT

SPECIAL PROVISION (TRENCHLESS PIPE WITH CEMENT MORTAR LINING) (72" DIAMETER)
 STA. 125+33.30 RT - 125+49.38 LT

GROUND SURFACE SHALL BE TILLED
 TO A DEPTH OF 18" FOR NEW TREES
 IN A CONTINUOUS BED, AS SHOWN



LINES SHOWN ON THIS PLAN AS EXISTING
 PROPERTY LINES P/L ARE BELIEVED TO
 BE ACCURATE BUT SHOULD NOT BE RELIED
 UPON FOR PURPOSES UNRELATED TO THE
 STATE OF VERMONT'S ACQUISITION OF LAND
 AND RIGHTS FOR THIS PROJECT.

**FOR R.O.W.
 USE ONLY**

PROJECT NAME:	HIGHGATE	PLOT DATE:	14-OCT-2016
PROJECT NUMBER:	STP SCR(12)	DRAWN BY:	A. EGIZI
FILE NAME:	r13ci34lay.dgn	DESIGNED BY:	A. KEMPTON
PROJECT LEADER:	B. MARTIN	CHECKED BY:	R. CLOUTIER
R.O.W. LAYOUT SHEET 1 OF 1		SHEET	16 OF 40