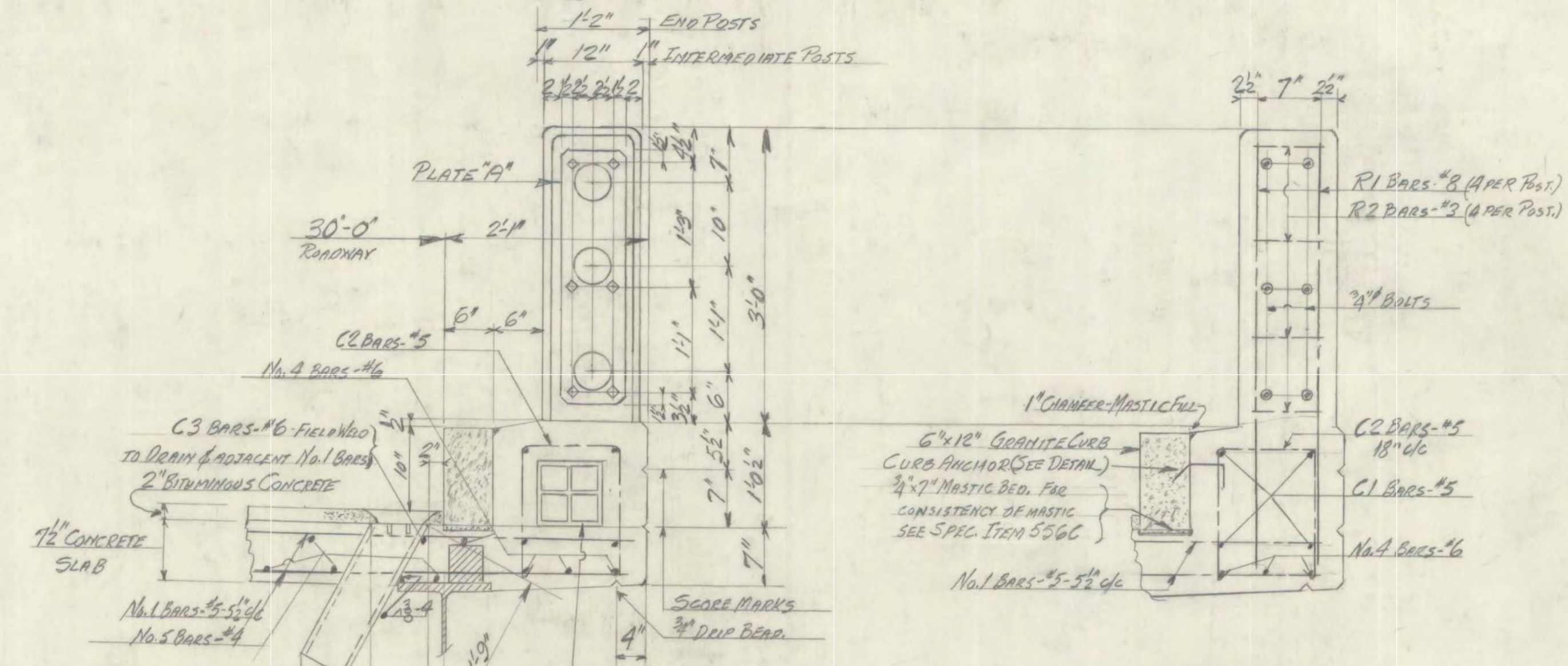


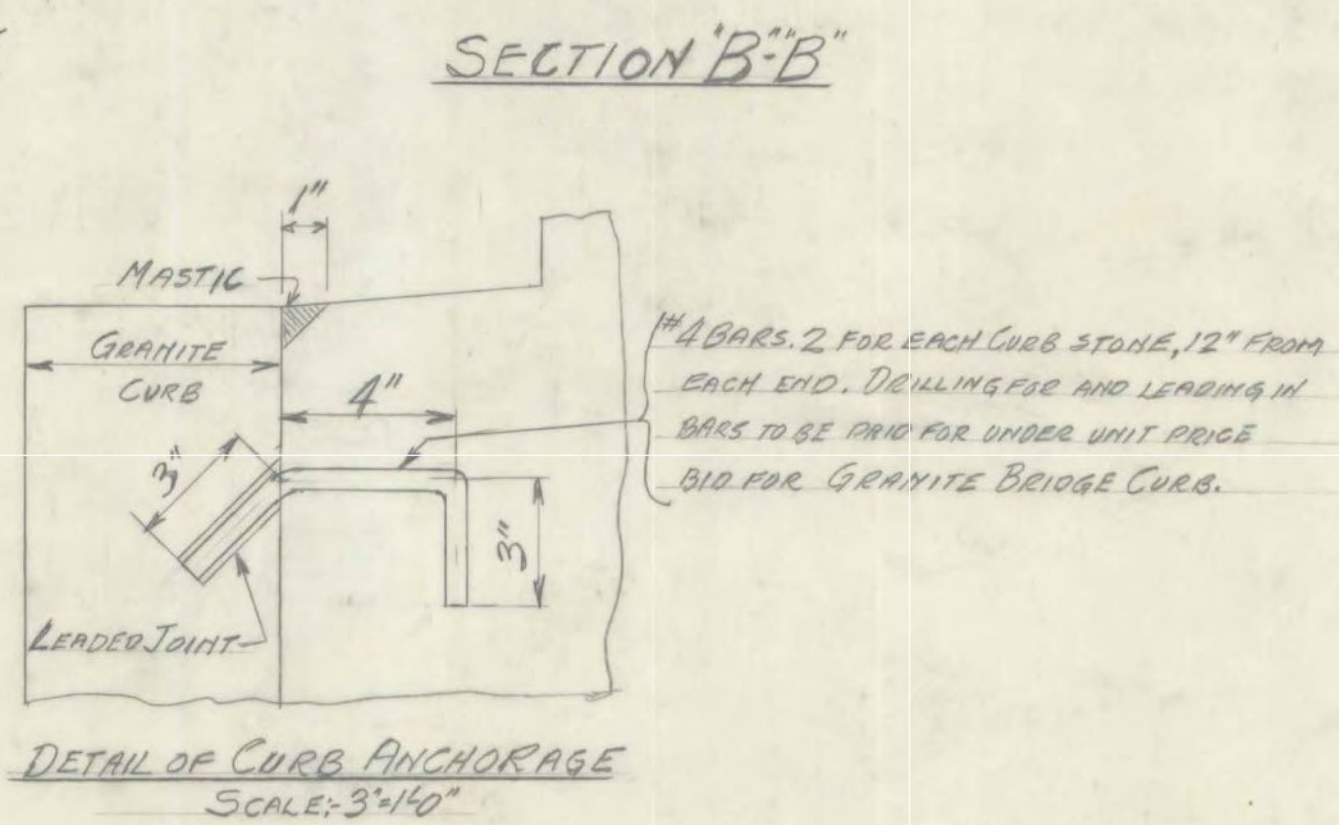
BEGIN BRIDGE
FIXED END
FOR STRUCTURAL DETAILS OF
END POST SEE DETAILS OF ABUT. #1

END OF BRIDGE
EXPANSION END
FOR STRUCTURAL DETAILS OF
END POST SEE DETAILS OF ABUT. #2



DRAIN MADE OF 2-6" x 10" x 1/4" TIES V-WELDED TOGETHER AND INSTALLED AS SHOWN. 1-ROW INSTALL ONE EACH SIDE OF BRIDGE ABOUT 12" & 36" AHEAD OF ABUT. #1. 3/4" x 3/8" x 1/2" BARS, SET INTO SLOTS IN CHANNEL WEGS AND WELDED ON OUTSIDE.

8" x 8" x 1/2" TERRA COTTA TILE CONTIGUOUS BETWEEN POSTS. JOINTS TO BE CAREFULLY MORTARED AND OPEN ENDS CLOSED TO PREVENT INTRUSION OF CONCRETE TO BE PAID FOR UNDER THE UNIT PRICE BID FOR CONCRETE CLASS "B", ITEM 401B. IN COMPUTING CONCRETE VOLUMES NO DEDUCTION SHALL BE MADE FOR THE SPACE OCCUPIED BY THE TILE.



NOTES

ALL MATERIALS IN THE INTERMEDIATE RAILING POSTS AND THE PLATES & ANCHOR BOLTS IN THE END POSTS SHALL BE INCLUDED IN THE UNIT PRICE BID FOR BRIDGE RAILING, ITEM 572. REFERENCE TO STR. DWS. (No. 518-300(23)) - ALL NO. 2 & NO. 3 BARS ARE TO BE REPLACED WITH NO. 1 BARS 38" IN LENGTH. BARS NO. 2 TO BE REPLACED ONE FOR BAR, EACH NO. 3 BAR TO BE REPLACED WITH TWO NO. 1 BARS. ALSO, THE FOUR CORNERS OF THE SUPERSTRUCTURE ARE TO BE CUT AWAY TO CLEAR DRILLING END PITS AS SHOWN ON ABUTMENT DETAIL SHEETS.

**LYNDON
BF MEMB(39)**
**SHEET 27 OF 28
BRIDGE 147
FOR REFERENCE ONLY**

**STATE OF VERMONT
DEPARTMENT OF HIGHWAYS**

TOWN OF LYNDON
ROUTE No. U.S. 5 LOG STA. 343+93
CURB AND RAILING DETAILS
HOGBACK BRIDGE
SCALE 1" = 1'-0" EXCEPT NOTED
SURVEYED BY _____
DRAWN BY H.E.S. CHECKED BY E.F.P.
PROJECT No. F 86(3)
SHEET 45 OF 173

FINAL	ITEM	ESTIMATED QUANTITIES DESCRIPTION	QUANTITY
108	556C	GRANITE BRIDGE CURB (TYPE 1)	108 LF
100	572	BRIDGE RAILING	100 LF
155	403A	STRUCTURAL STEEL (DRAINS)	160 LBS.
	402	REINFORCING STEEL (SEE RE-STEEL SHEET)	