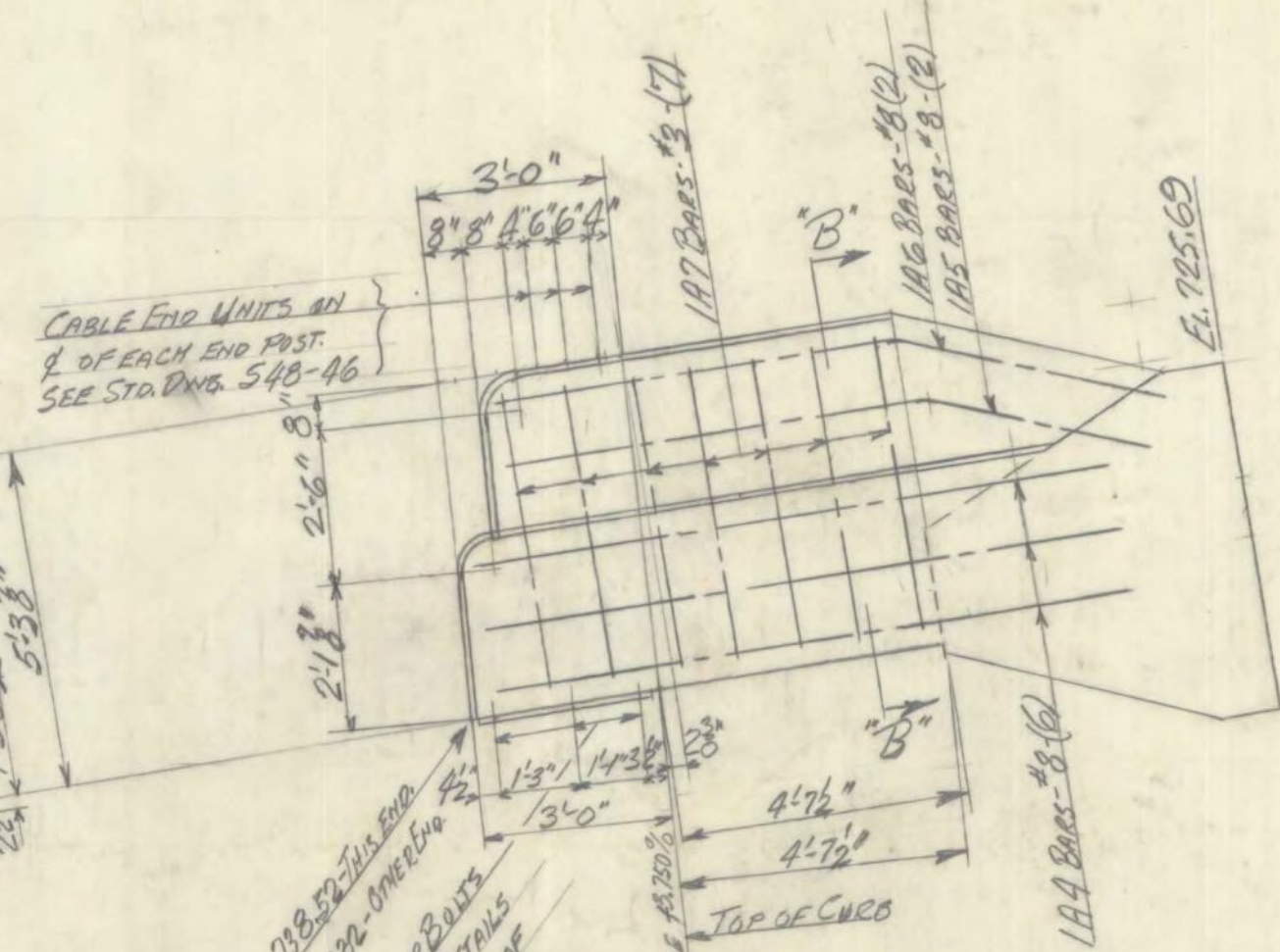
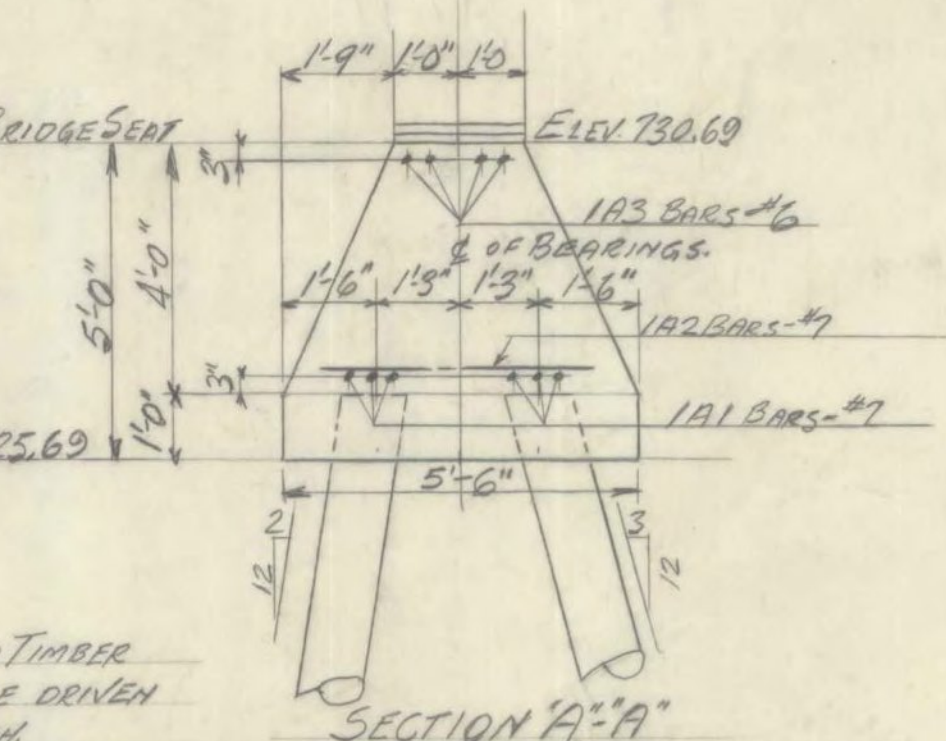


ELEVATION

ALL PILING TO BE TREATED TIMBER PILING, ITEM 502B. PILES TO BE DRIVEN TO A CAPACITY OF 15 TONS EACH. FOR ESTIMATING PURPOSES THE LENGTH OF EACH IS ASSUMED TO BE:
 EST. LENGTH OF PILES = 30'
 EST. PILE LENGTH = 27'
 EST. CUT-OFF LENGTH = 3'
 DRIVE PILES TO EL. 705.00±



SECTION B-B



SECTION A-A

GENERAL NOTES

BRIDGE SEAT ELEVATIONS AS NOTED APPLY ALONG THE CENTERLINE OF BEARINGS ONLY.
 BRIDGE SEATS ARE TO BE SLOPED 1/4" PER FOOT TOWARD THE STREAM FROM THE NOTED BRIDGE SEAT ELEVATIONS.
 ENTIRE BRIDGE SEAT AREA TO BE COATED WITH 1/2" OF MASTIC BEFORE PLACING SUPERSTRUCTURE. FOR SPECIFICATION OF MASTIC SEE "GRANITE BRIDGE CURB", ITEM 556C.
 ONE-HALF BAG ADDITIONAL CEMENT, OVER AND ABOVE THE AMOUNT SHOWN IN STATE OF VERMONT, DEPARTMENT OF HIGHWAYS, STANDARD SPECIFICATIONS FOR ROAD AND BRIDGE CONSTRUCTION, DATED NOVEMBER 1948, SHALL BE ADDED TO EACH CUBIC YARD OF CLASS B, C, AND D CONCRETE ON THE PROJECT.
 SEE SPECIAL PROVISIONS FOR CURING CONCRETE.
 CORNERS OF SUPERSTRUCTURE TO BE NOTCHED AROUND END RAILING POSTS AS SHOWN ON ABUTMENT DETAILS. SUPERSTRUCTURE STA. DWG. SIB 30(H-20) TO BE VARIED TO MEET THIS CONDITION AND ALSO THE SPECIAL CURB AND DRAIN CONDITIONS INDICATED ON CURB AND RAILING DRAWING, SHEET No. OF

LYNDON
 BF MEMB(39)

SHEET 25 OF 28
 BRIDGE 147
 FOR REFERENCE ONLY

STATE OF VERMONT
 DEPARTMENT OF HIGHWAYS

TOWN OF LYNDON
 ROUTE No. 1155 LOG STA. 343+93
 DETAILS OF ABUTMENT No. 1
 HOGBACK BRIDGE
 SCALE 3/8" = 1'-0"
 SURVEYED BY _____
 DRAWN BY HES CHECKED BY E.F.P.
 PROJECT No. F 86(B)
 SHEET 42 OF 173

FINAL	ITEM	DESCRIPTION	QUANTITY
19.6	106C	UNCLASSIFIED CHANNEL EXCAVATION	24CY
61	107	STRUCTURE EXCAVATION (MOD)	62CY
32.2	401B	CONCRETE CLASS B (MOD)	30CY
	402	REINFORCING STEEL (SEE RE-STEEL SHEET)	
592	502B	TREATED TIMBER PILING	540 LF
2		CUT-OFF FOR TREATED TIMBER PILING	60 LF