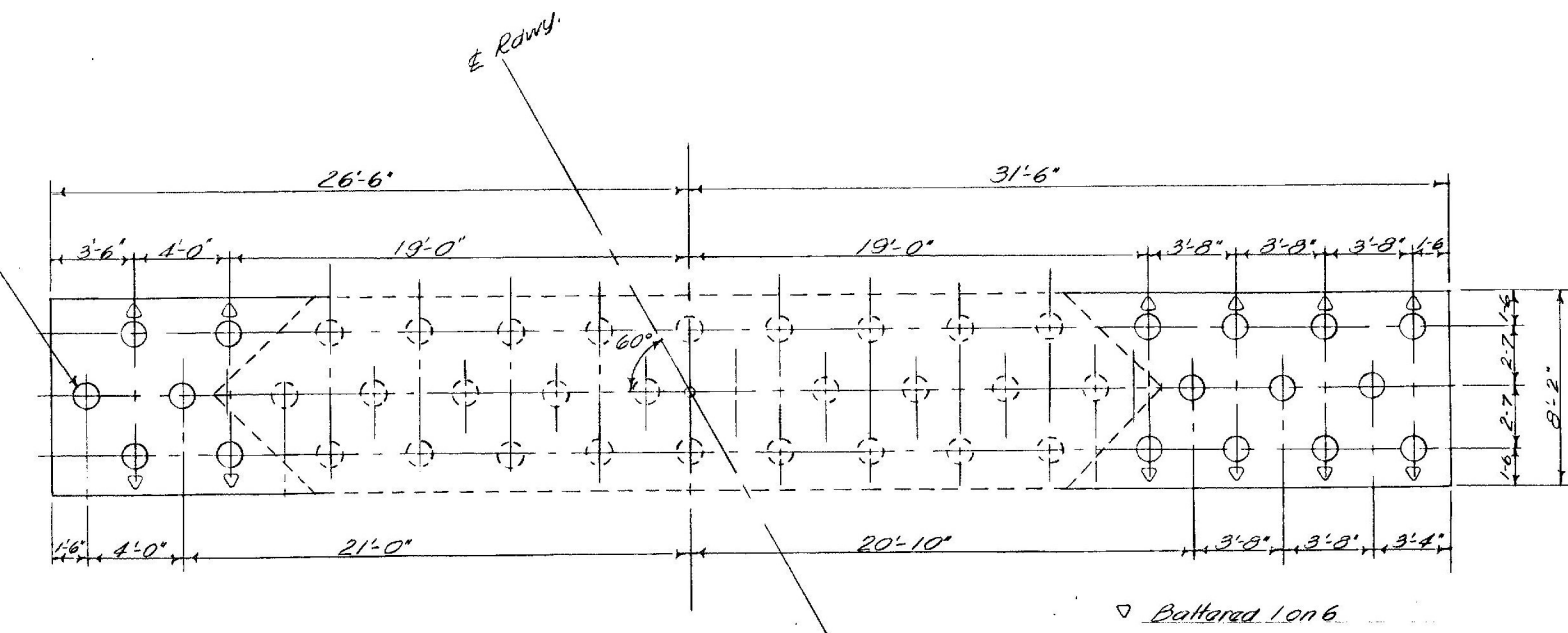
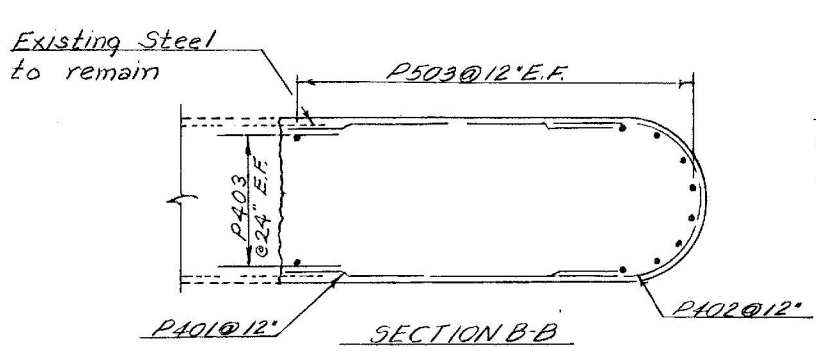


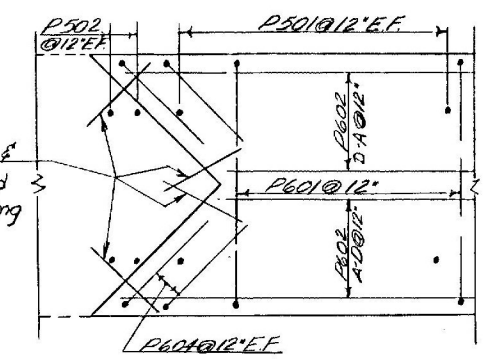
PLAN
Scale 1/4" = 1'-0"



FOOTING PLAN
Scale 3/16" = 1'-0"



SECTION B-B
Scale 1/4" = 1'-0"



SECTION C-C
Scale 1/4" = 1'-0"

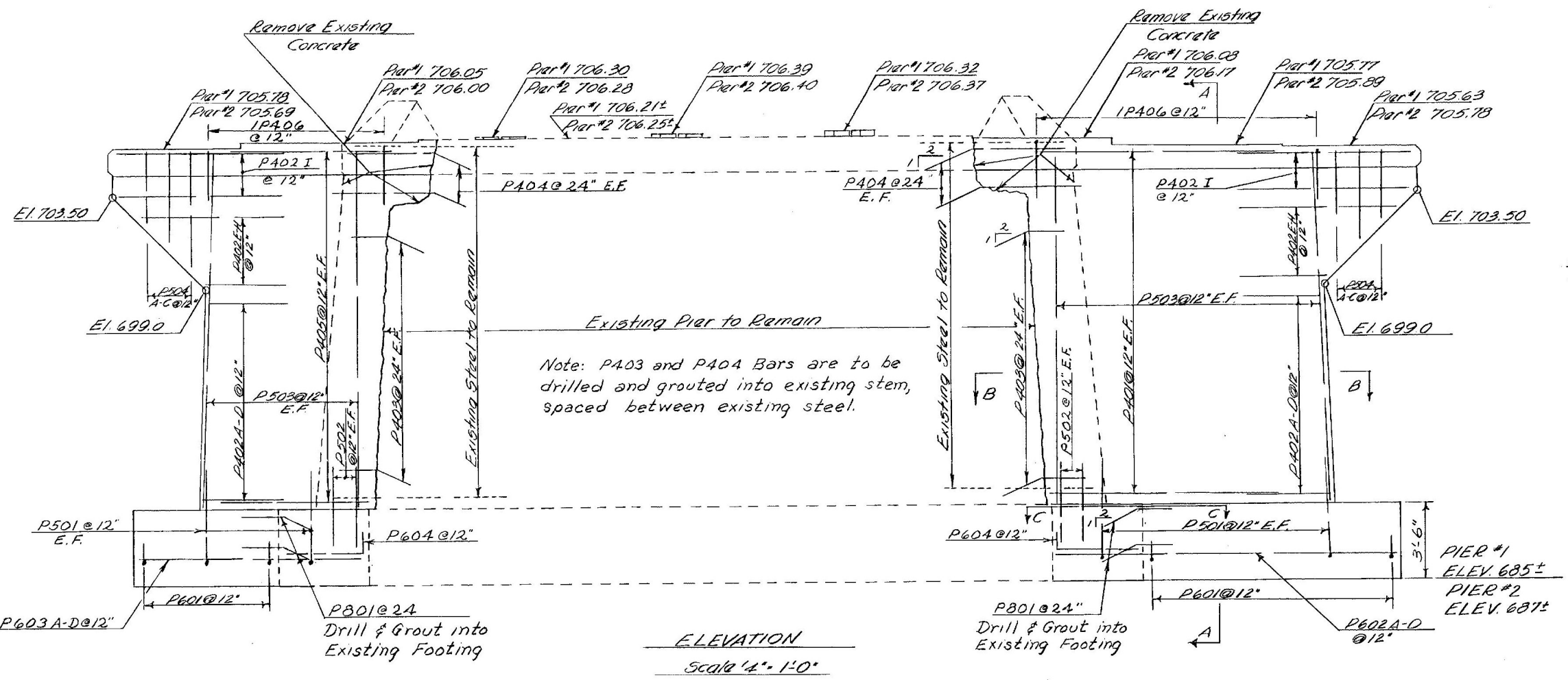
PILE TABLE			
Location	Type	Quantity	Length
Abut #1	Treated Timber	14	35 ft.
Abut #2	Treated Timber	12	35 ft.
Pier #1	Treated Timber	17	30 ft.
Pier #2	Treated Timber	17	30 ft.

LYNDON
BF MEMB(39)

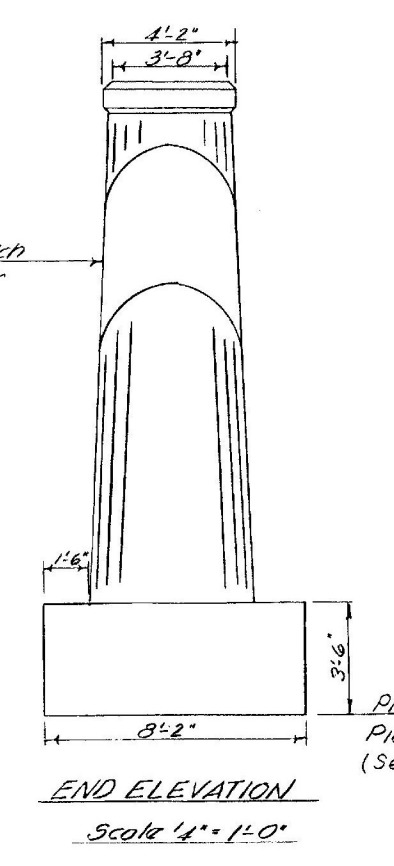
SHEET 20 OF 28
BRIDGE 144
FOR REFERENCE ONLY

NOTES

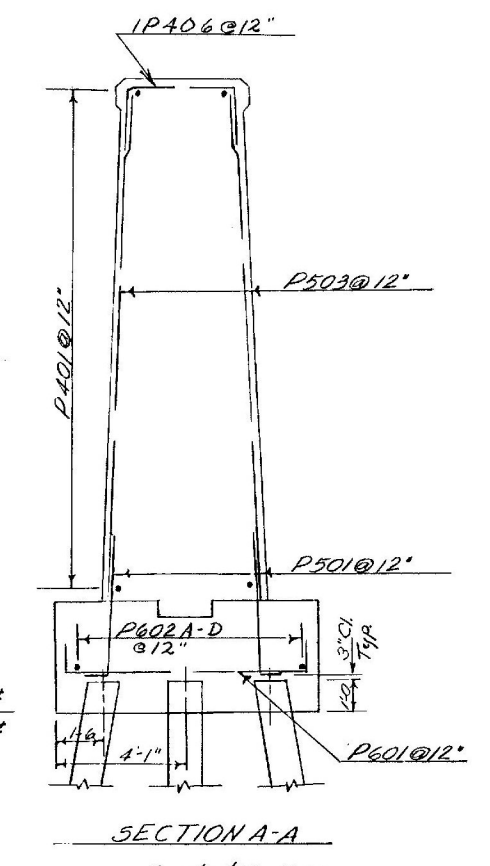
- Water Retent, Item 410, shall be applied to existing and new pier concrete from Bridge Seat Elevation to Elevation 693.0
- Metal shim #3, equal in size to the bearing #3, shall be provided at Beams 3, 4, and 5 to raise existing elevation to required Bridge Seat Elevation.
- Bottoms of new footings are to be placed at the same elevation as the bottoms of existing footings.
- See Br. 100 for General Notes.



ELEVATION
Scale 1/4" = 1'-0"



END ELEVATION
Scale 1/4" = 1'-0"



SECTION A-A
Scale 1/4" = 1'-0"

Note: All Pier reinforcing bar marks are to be prefixed with Pier Number.

STATE OF VERMONT
DEPARTMENT OF HIGHWAYS

PROJECT LYNDON
TOWN OF LYNDON
ROUTE No. U.S. #5 Log Sta. 19+97
U.S. ROUTE #5 OVER PASSUMPSIC RIVER
PIER #1 AND PIER #2
SCALE AS NOTED
SECTION SUPERVISOR R. HAUDI
DRAWN BY: [Signature] CHECKED BY: [Signature]
PROJECT No. BR-21-2-6622
SHEET 20 OF 28 BR 108