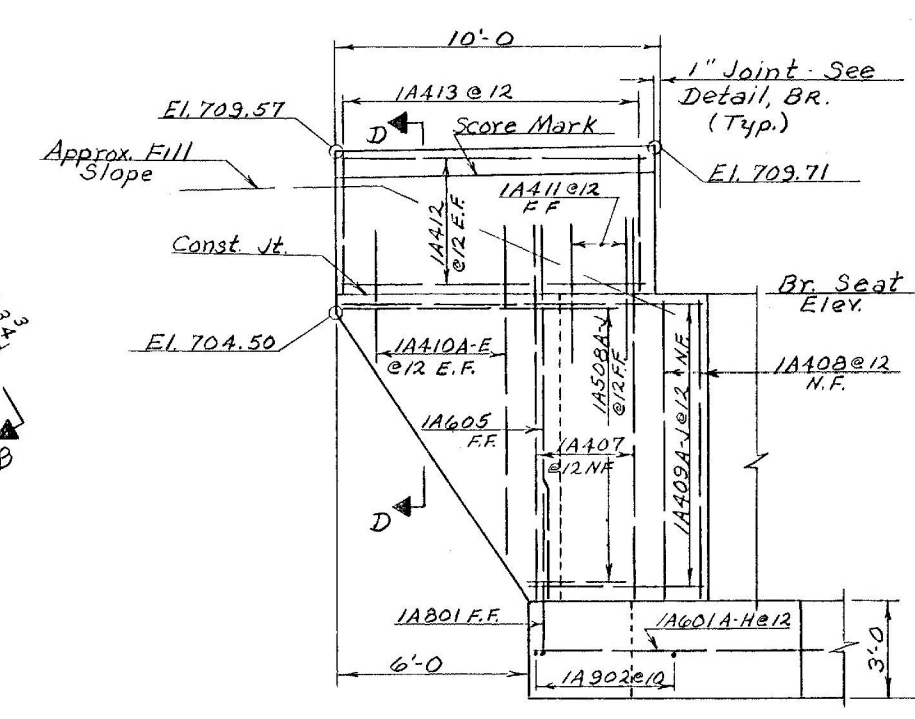
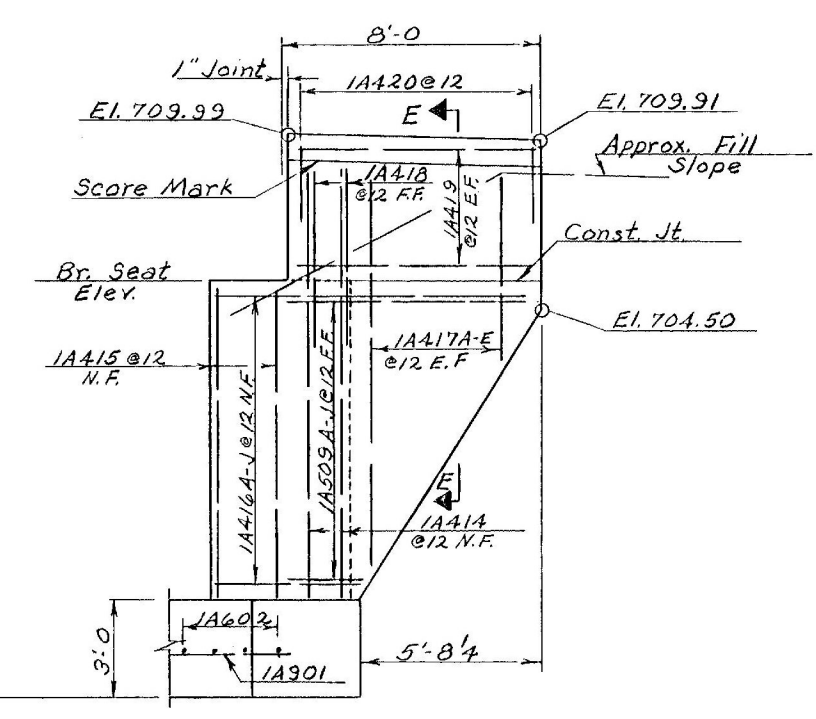


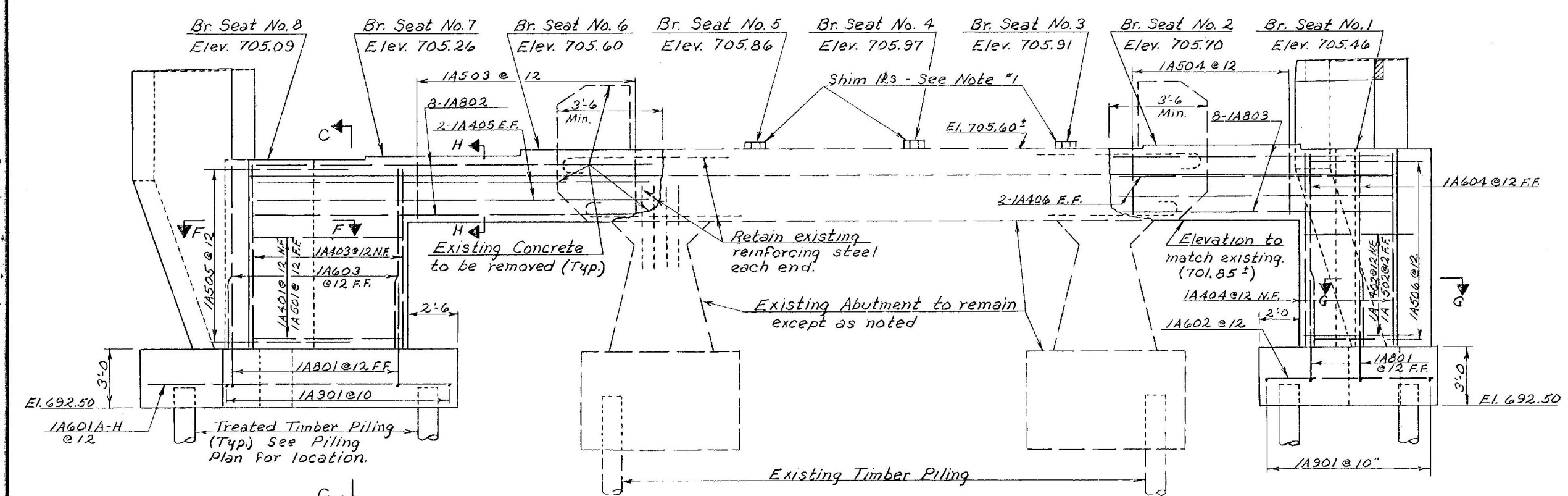
PLAN  
SCALE: 1/4" = 1'-0"



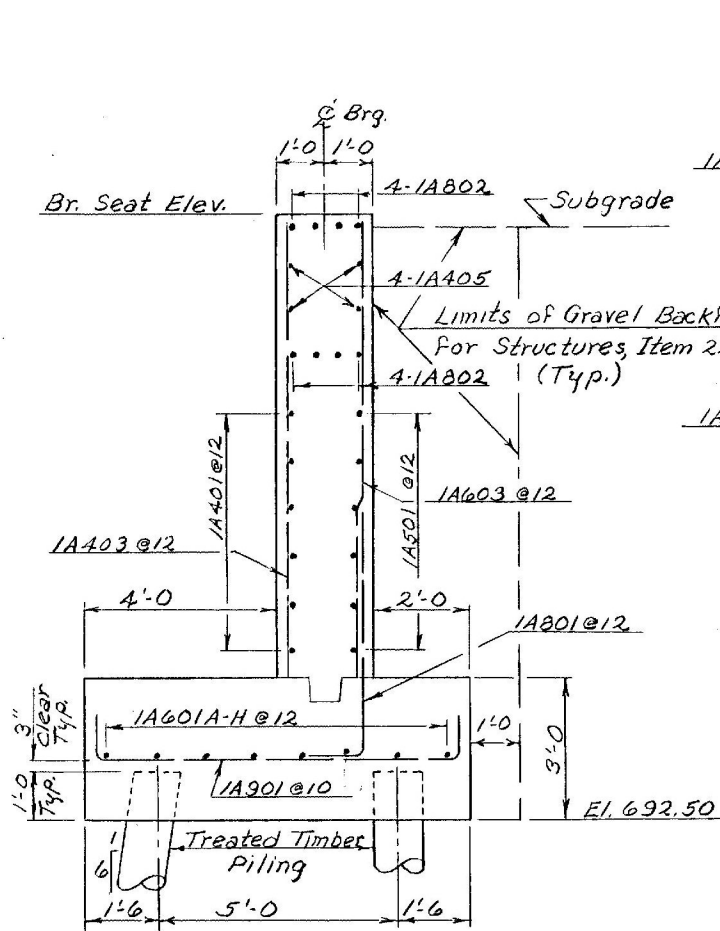
ELEVATION A-A  
SCALE: 1/4" = 1'-0"



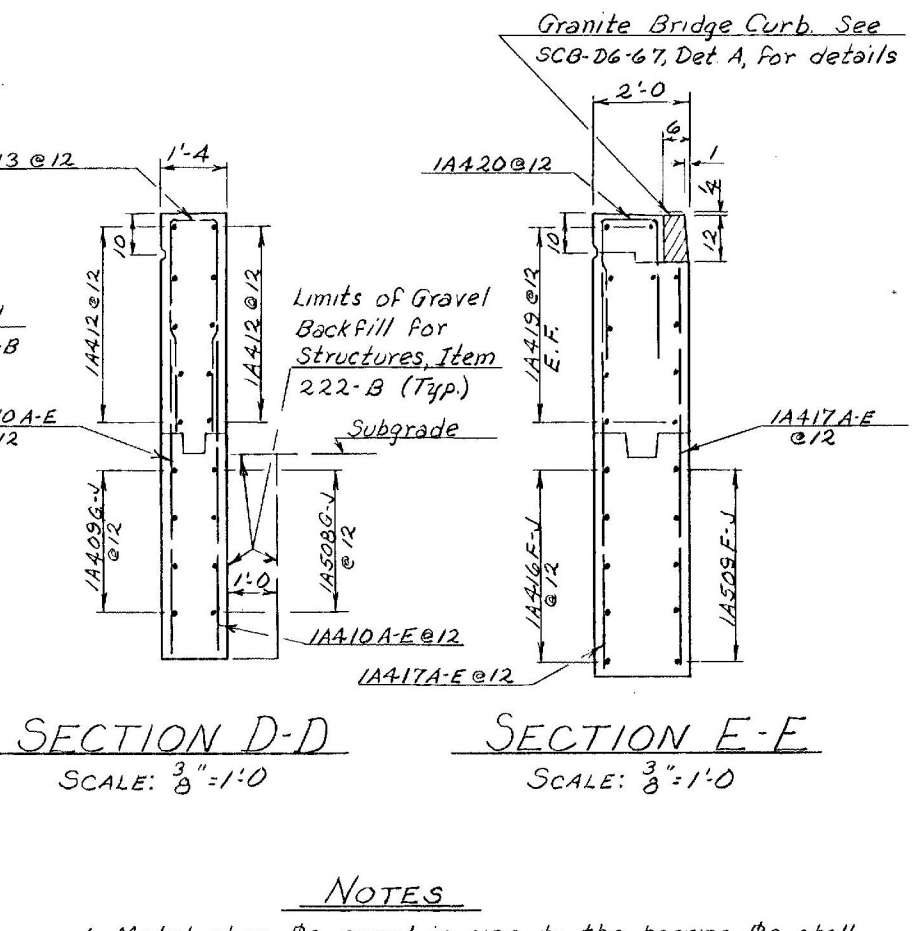
ELEVATION B-B  
SCALE: 1/4" = 1'-0"



ELEVATION  
SCALE: 1/4" = 1'-0"



SECTION C-C  
SCALE: 3/8" = 1'-0"

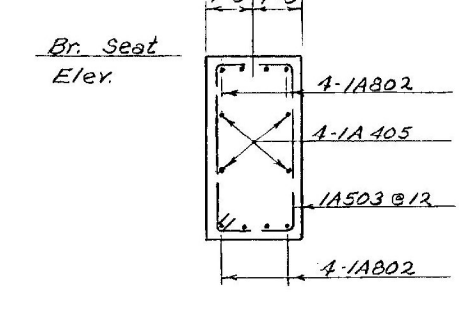


SECTION D-D  
SCALE: 3/8" = 1'-0"

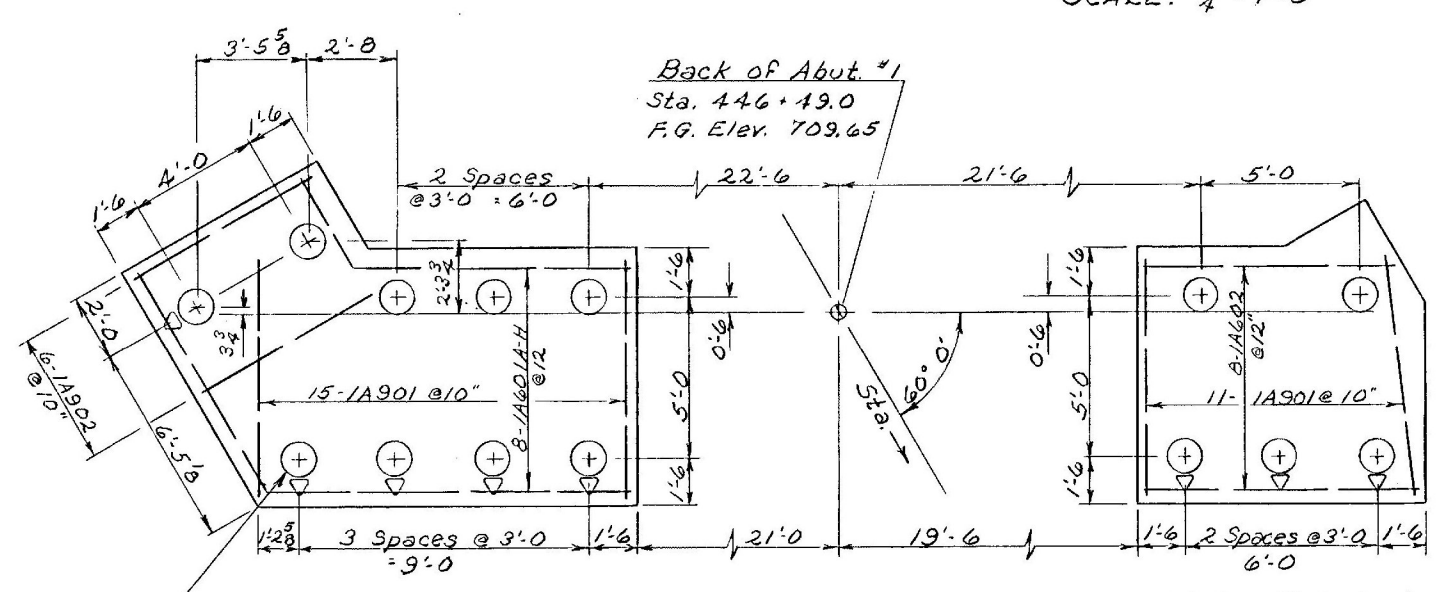
SECTION E-E  
SCALE: 3/8" = 1'-0"

LYNDON  
BF MEMB(39)  
SHEET 18 OF 28  
BRIDGE 144  
FOR REFERENCE ONLY

- NOTES
1. Metal shim #3, equal in size to the bearing #3, shall be provided at Beams 3, 4, & 5 to raise existing elevation to required Bridge Seat Elevation.
  2. See BR. 100 For General Notes.
  3. Water Repellent, Item 440, shall be applied to all exposed surfaces not otherwise treated.

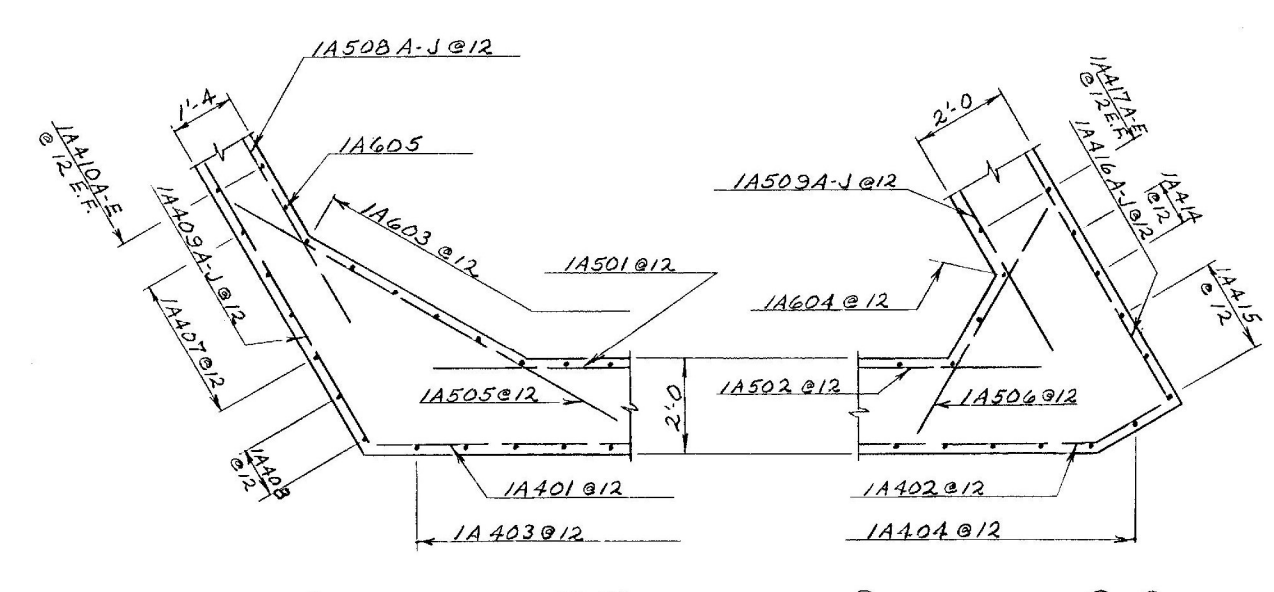


SECTION H-H  
SCALE: 3/8" = 1'-0"



PILING PLAN  
SCALE: 1/4" = 1'-0"

Note: ◊ Indicates direction of 1 on 6 pile batter



SECTION F-F  
SCALE: 3/8" = 1'-0"

SECTION G-G  
SCALE: 3/8" = 1'-0"

STATE OF VERMONT DEPARTMENT OF HIGHWAYS	
PROJECT	LYNDON
TOWN OF	LYNDON
ROUTE No.	U.S. #5 LOG STA. 131.97
U.S. ROUTE #5 OVER PASSUMPSIC RIVER	
ABUTMENT No. 1	
SCALE	AS NOTED
SECTION SUPERVISOR	R. HAVEL
DRAWN BY M. TRIBE CHECKED BY M. JENKINS	
PROJECT No.	BR. 041-5-4603
SHEET	18 OF 50 BR. 106