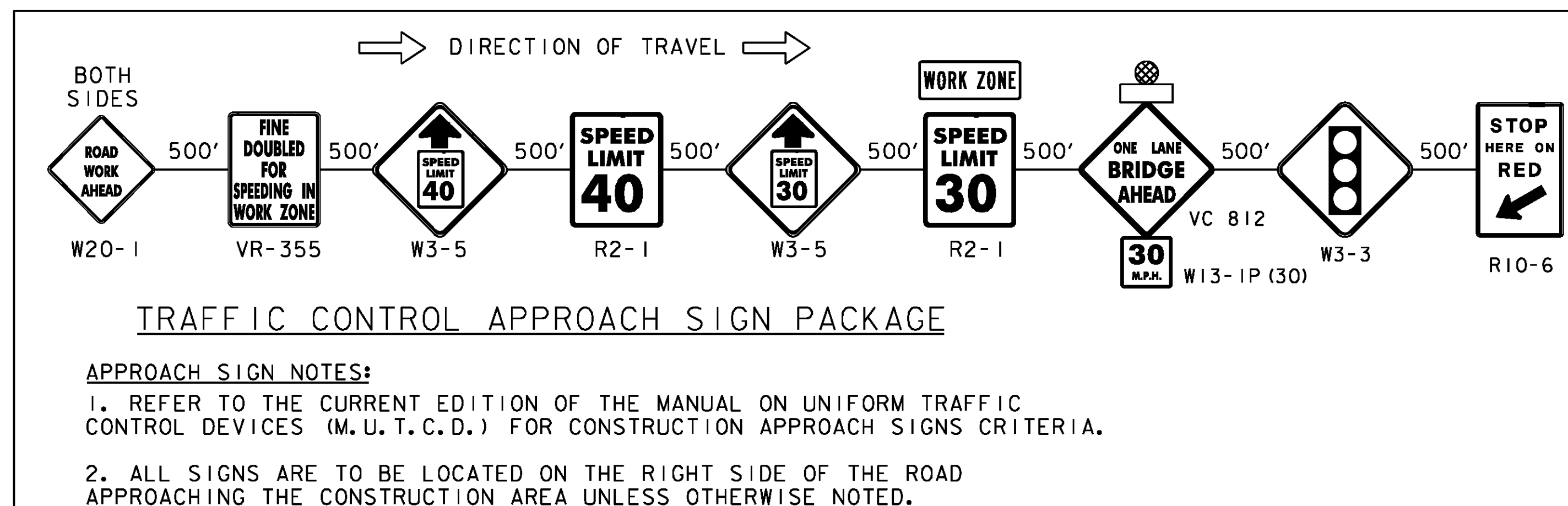
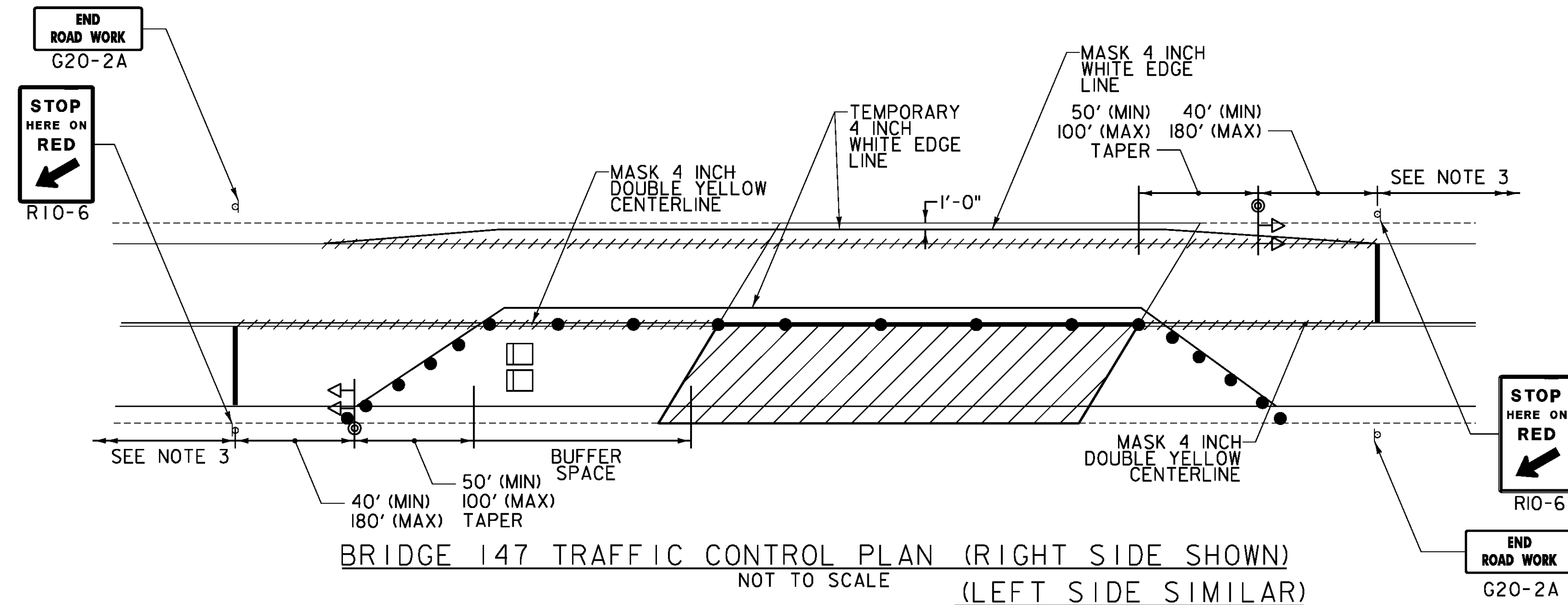


NOTES:

1. SEE SHEETS ID-01 AND ID-02 FOR GENERAL TRAFFIC CONTROL AND TEMPORARY TRAFFIC SIGNAL SYSTEM NOTES.
2. CHANNELIZING DEVICE SPACING
TANGENT SECTIONS: 60 FT. (2X DESIGN SPEED LIMIT)
TAPER SECTIONS: 30 FT. (1X DESIGN SPEED LIMIT)
DESIGN SPEED THROUGH CONSTRUCTION ZONE = 30MPH
3. ACCESS TO ALL EXISTING SIDE ROADS, DRIVES, AND PARKING AREAS SHALL BE MAINTAINED AT ALL TIMES DURING CONSTRUCTION. DRIVES, SIDE ROADS OR PARKING AREAS SHALL NOT BE LOCATED WITHIN THE ONE-LANE CLOSURE.
4. IF DRIVEWAY WITHIN LIMITS OF TRAFFIC CONTROL PLAN IS ACTIVE THEN SEPARATE TEMPORARY TRAFFIC CONTROL SIGNALS, DETECTORS AND CONTROLLER PHASING SHALL BE FURNISHED FOR THAT DRIVEWAY IN ACCORDANCE WITH THE MANUAL ON UNIFORM TRAFFIC CONTROL DEVICES.



BUFFER SPACE TABLE

POSTED SPEED (MPH)	MINIMUM BUFFER SPACE LENGTH (FT)
25	155
30	200
35	250
40	305
45	360
50	425

LEGEND

- /// MASK LINES
- REFLECTORIZED PLASTIC DRUM
- ⊕ TEMPORARY TRAFFIC SIGNAL
- ⊘ TEMPORARY CONSTRUCTION SIGN
- ⚡ FLASHING BEACON
- ▨ WORK ZONE
- TYPE III BARRICADE



PROJECT NAME: LYNDON
PROJECT NUMBER: BF MEMB(39)

FILE NAME: z13c122detail.dgn
PROJECT LEADER: G. BOGUE
DESIGNED BY: D. DEBAIE
TRAFFIC CONTROL PLAN - TC-03

PLOT DATE: 5/22/2014
DRAWN BY: P. ARMATA
CHECKED BY: G. BOGUE
SHEET 9 OF 28