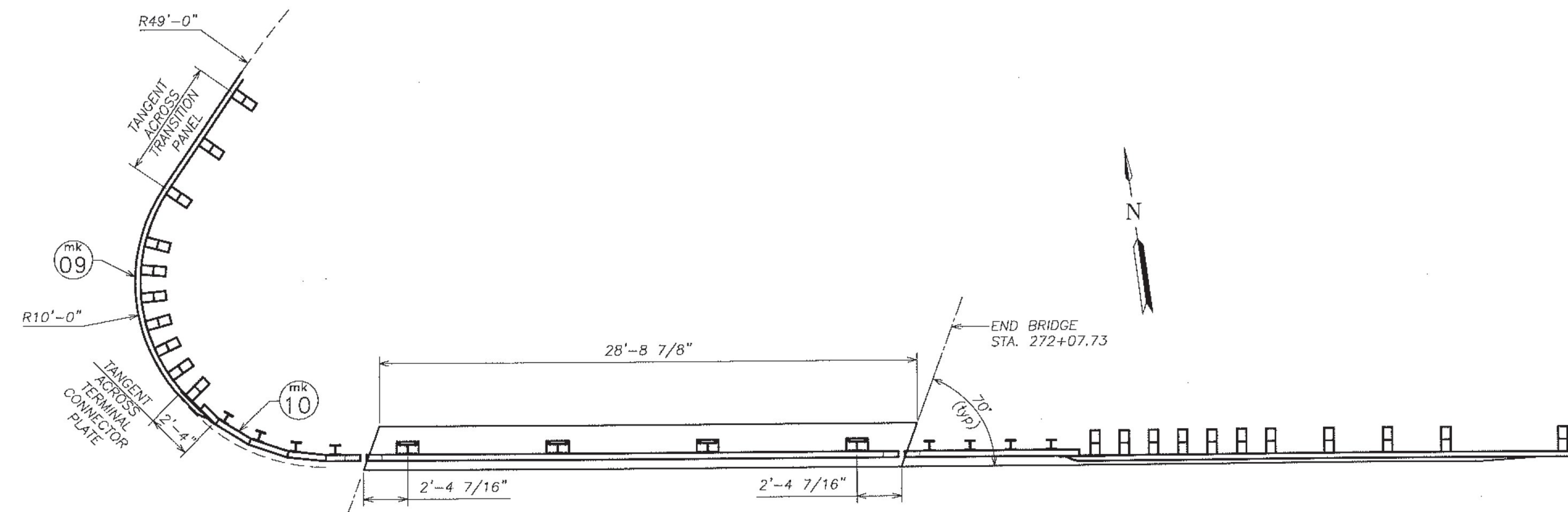
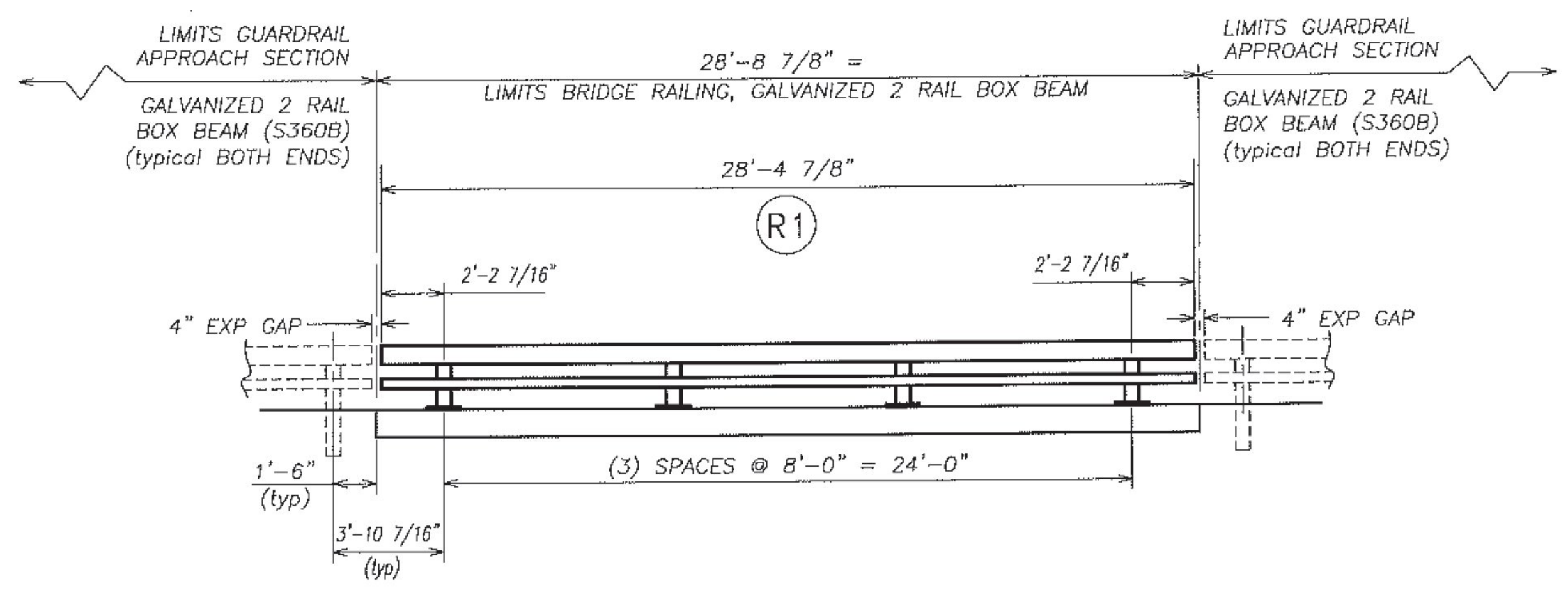
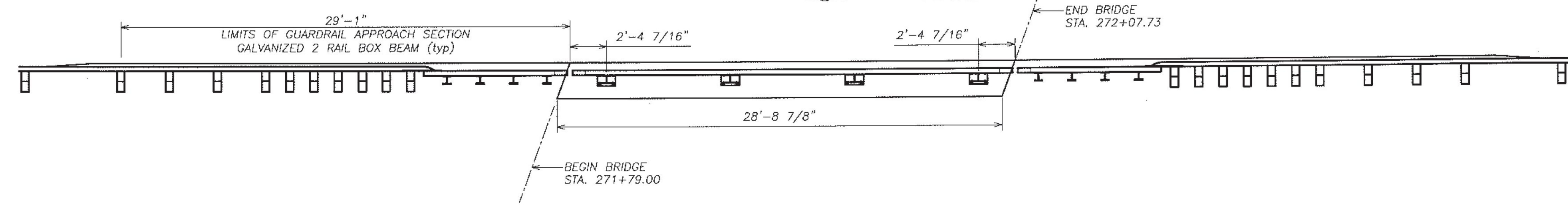


mk 10 NW APPROACH TUBE
MITER CUT & WELD
TO FOLLOW 10'R



PLAN VIEW



TYPICAL RAILING ELEVATION
LOOKING AT TRAFFIC FACE OF RAILING
BOTH SIDES TYPICAL
FACING NORTH OR SOUTH FROM CENTERLINE OF ROAD

No.	Remarks	Date
A	revised submittal	01-06-17
0	initial submittal	12-12-16
REVISIONS - APPLIES TO SET		

BILL OF MATERIAL

Qty	mk	Description	Spec.
58 LF		ITEM 525.33 BRIDGE RAILING, GALVANIZED, 2 RAIL BOX BEAM	
8		BRIDGE RAILING POST W6 x 25 x 2'-2.375' OAH WITH 1 x 10 x 14 BASE PLATE (GLV)	A709 gr 50
2	R1	UPPER RAIL TUBE 8 x 4 x 5/16 (GALV) 28 ft - 4.875 in LG (EXP splice both ends)	A500 gr B
2	R1	LOWER RAIL TUBE 4 x 4 x 1/4 (GALV) 28 ft - 4.875 in LG (EXP splice both ends)	A500 gr B
8		ANCHOR SPACER PLATE PL 0.375 x 13.000 x 9.375	A709 gr 36
32		ANCHOR STUD DBL END PART THREAD - 1" DIA x 12.000 w/ 2.250" THD EACH END (GLV)	A449
64		HEAVY HEX NUT 1" (GLV)	A563 DH
32		ROUND WASHER (SAE) - 1" DIA SMALL (GLV)	F436
32		JAM NUT 1" (GALV)	A563 DH
32		ROUND HEAD POST BOLT slot or wrench head - no shoulder 3/4" DIA x 6" LG. FULL BODY (GLV)	A449 / A325
32		LOCK NUT 3/4" (GLV)	A563 DH
32		ROUND WASHER (SAE) 3/4" (GLV)	F436
8		BEARING PAD 0.125" THICK x 10.000 x 14.000 (NEOPRENE 80 duro +/-10)	aashto M251

Vermont Agency of Transportation
RECEIVED
CK'D BY SMC OK'D BY WDL
January 9, 2017
RESUBMIT No Approved
BY RSY DATE 01/31/2017

HIGHWAY SAFETY CORP
GLASTONBURY, CT
860-633-9445

ITEM 525.33 BRIDGE RAILING, GALVANIZED 2 RAIL BOX BEAM (S-360A)
ITEM 621.72 GUARDRAIL APPROACH, GALV 2 RAIL BOX BEAM (S-360B)

TOWN OF RICHMOND, VERMONT
US RT 2 & VT ROUTE 117 JUNCTION BRIDGE #32
BF 0284 (28)

GENERAL CONTRACTOR
SUB CONTRACTOR VT REC

DATE 12-09-16 SCALE NONE SIZE D

CERTIFIED FABRICATOR
JOB NO. 2146
SHEET NO. 1 of 3