

COLD PLANING
BITUMINOUS PAVEMENT
STA. 269+00 - 269+50
STA. 274+00 - 274+50

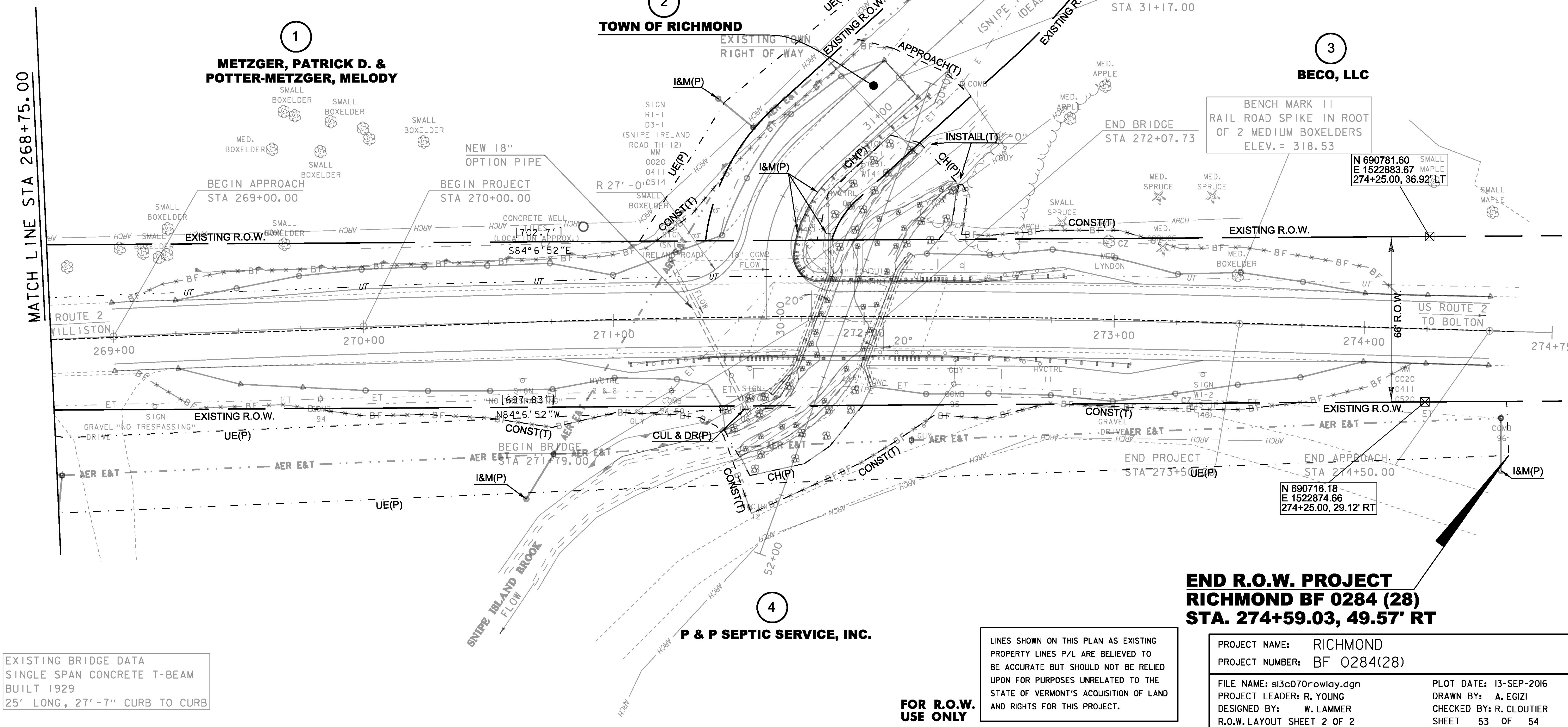
REMOVAL AND DISPOSAL OF GUARDRAIL
STA. 271+09.17 - 271+74.76 RT
STA. 271+99.99 - 272+70.84 RT
STA. 30+15.12 - 30+82.48 RT
STA. 272+11.12 - 272+80.74 LT

REMOVAL OF EXISTING DELINEATOR
STA. 271+09.17 RT
STA. 272+70.84 RT

BITUMINOUS CONCRETE PAVEMENT
STA. 269+00 - 274+50
STA. 30+15 - 31+17

PRECAST REINFORCED CONCRETE
OR CAST-IN-PLACE CURB OPTION
STA. 271+33.52 - 271+73.49 RT
STA. 30+52.39 - 271+84.46 LT
STA. 272+02.29 - 272+42.42 RT
STA. 272+13.12 - 272+53.01 LT

18" OPTION PIPE
STA. 271+22.92 LT - 271+54.02 RT



EXISTING BRIDGE DATA
SINGLE SPAN CONCRETE T-BEAM
BUILT 1929
25' LONG, 27'-7" CURB TO CURB

LINES SHOWN ON THIS PLAN AS EXISTING
PROPERTY LINES P/L ARE BELIEVED TO
BE ACCURATE BUT SHOULD NOT BE RELIED
UPON FOR PURPOSES UNRELATED TO THE
STATE OF VERMONT'S ACQUISITION OF LAND
AND RIGHTS FOR THIS PROJECT.

**FOR R.O.W.
USE ONLY**

**END R.O.W. PROJECT
RICHMOND BF 0284 (28)
STA. 274+59.03, 49.57' RT**

PROJECT NAME: RICHMOND	PLOT DATE: 13-SEP-2016
PROJECT NUMBER: BF 0284(28)	DRAWN BY: A. EGIZI
FILE NAME: s13c070rowlay.dgn	CHECKED BY: R. CLOUTIER
PROJECT LEADER: R. YOUNG	SHEET 53 OF 54
DESIGNED BY: W. LAMMER	
R.O.W. LAYOUT SHEET 2 OF 2	