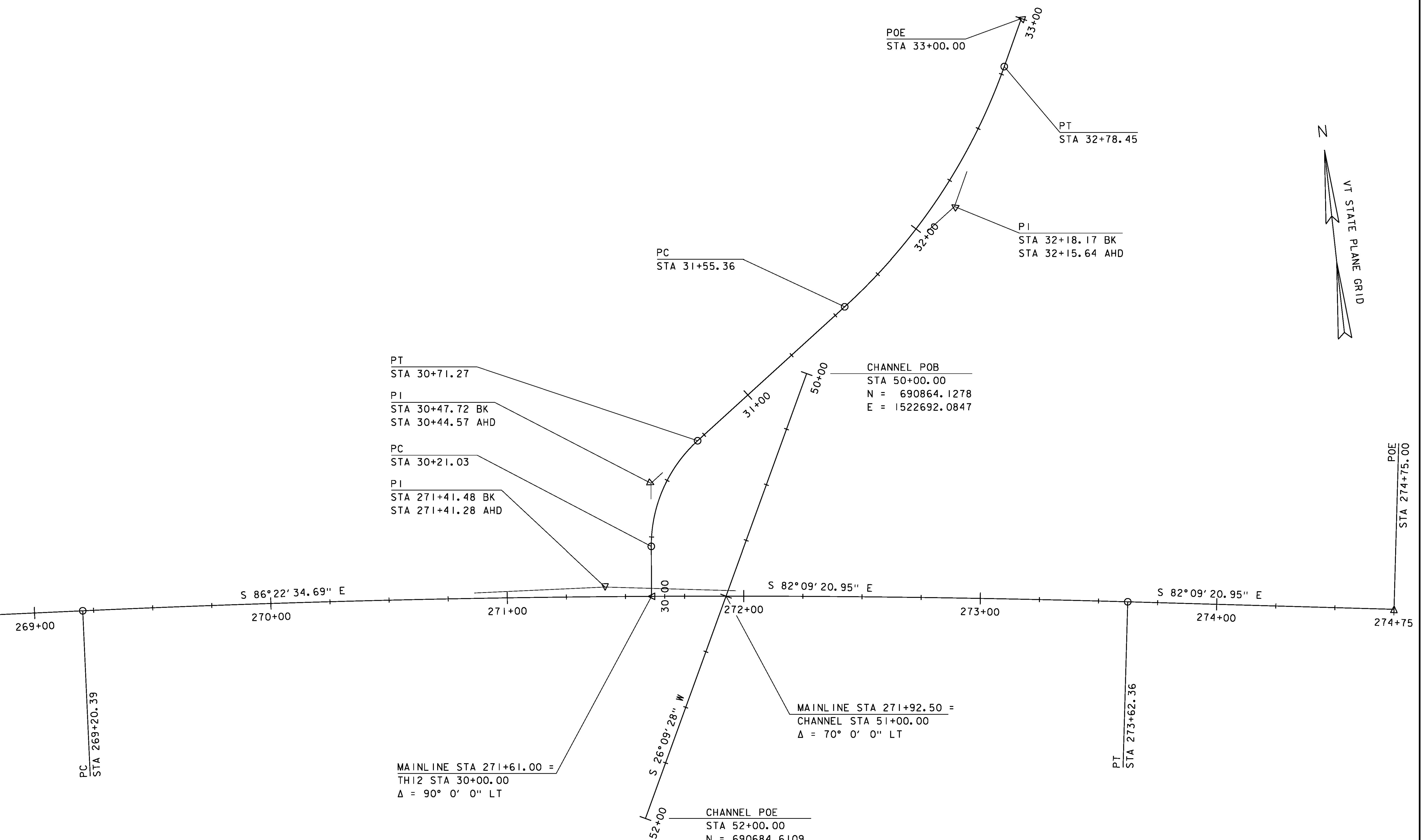
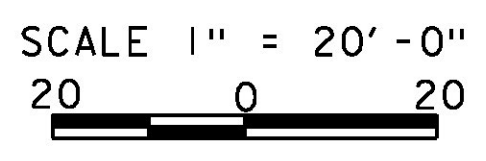


MATCH LINE STA 268+75.00



US 2 CURVE (1) DELTA = 4°13'14" D = 0°57'18" R = 6000.00' T = 221.08' L = 441.97' E = 4.07'	TH 12 CURVE (1) DELTA = 47°58'32" D = 95°29'35" R = 60.00' T = 26.70' L = 50.24' E = 5.67'	TH 12 CURVE (2) DELTA = 28°05'46" D = 22°49'37" R = 251.00' T = 62.81' L = 123.08' E = 7.74'	TH12 POB STA 30+00.00 N = 690777.7008 E = 1522616.6807
---	--	--	---



PROJECT NAME: RICHMOND	
PROJECT NUMBER: BF 0284(28)	
FILE NAME: s13c070bdr.dgn	PLOT DATE: 13-SEP-2016
PROJECT LEADER: R. YOUNG	DRAWN BY: S. COLEY
DESIGNED BY: S. COLEY	CHECKED BY: W. LAMMER
ALIGNMENT SHEET 2	SHEET 12 OF 54