

GPS CONTROL POINTS

SNIPE AZ MK
 NORTH = 689236.655
 EAST = 1522476.676
 ELEV. = 322.130

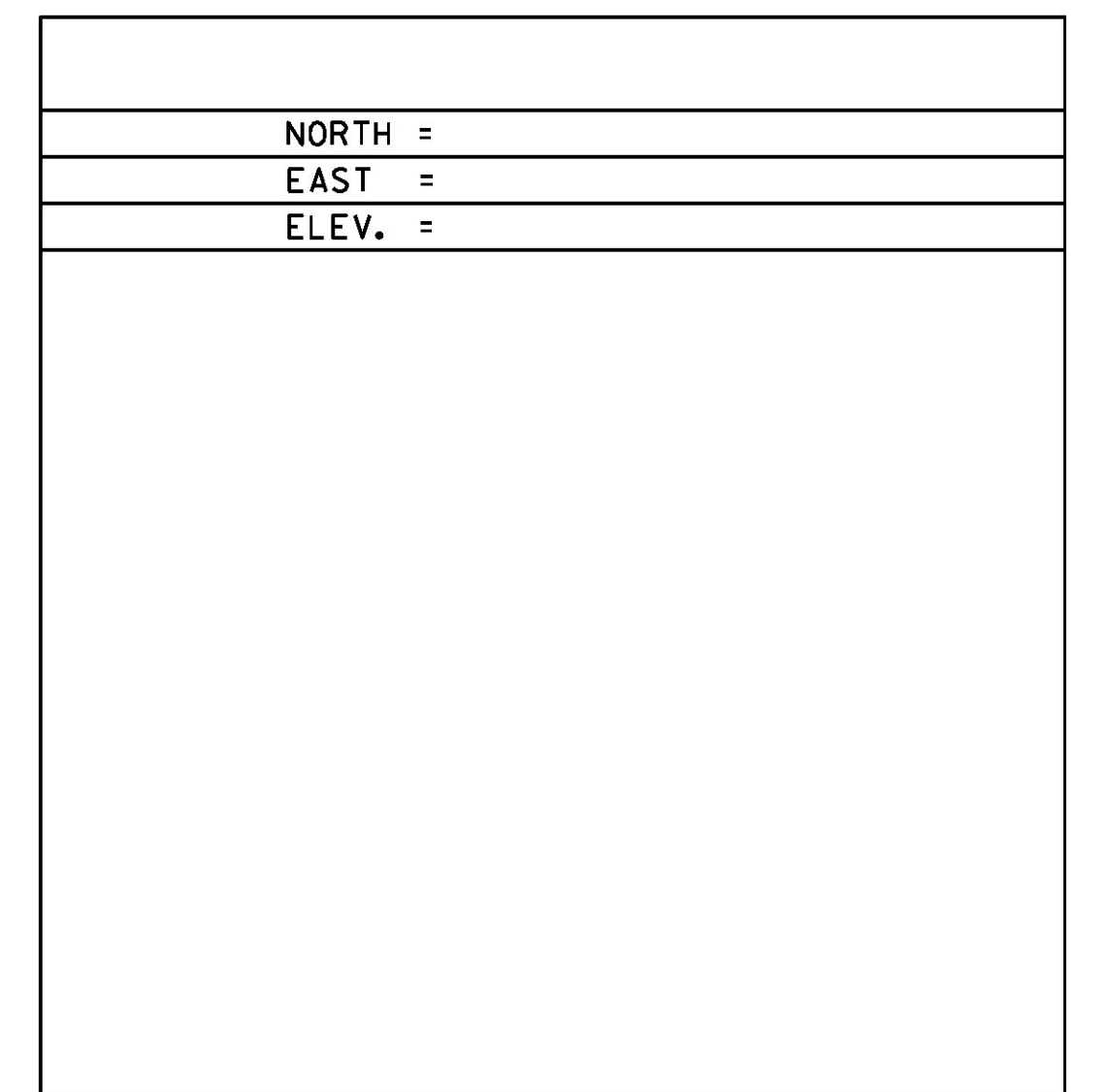
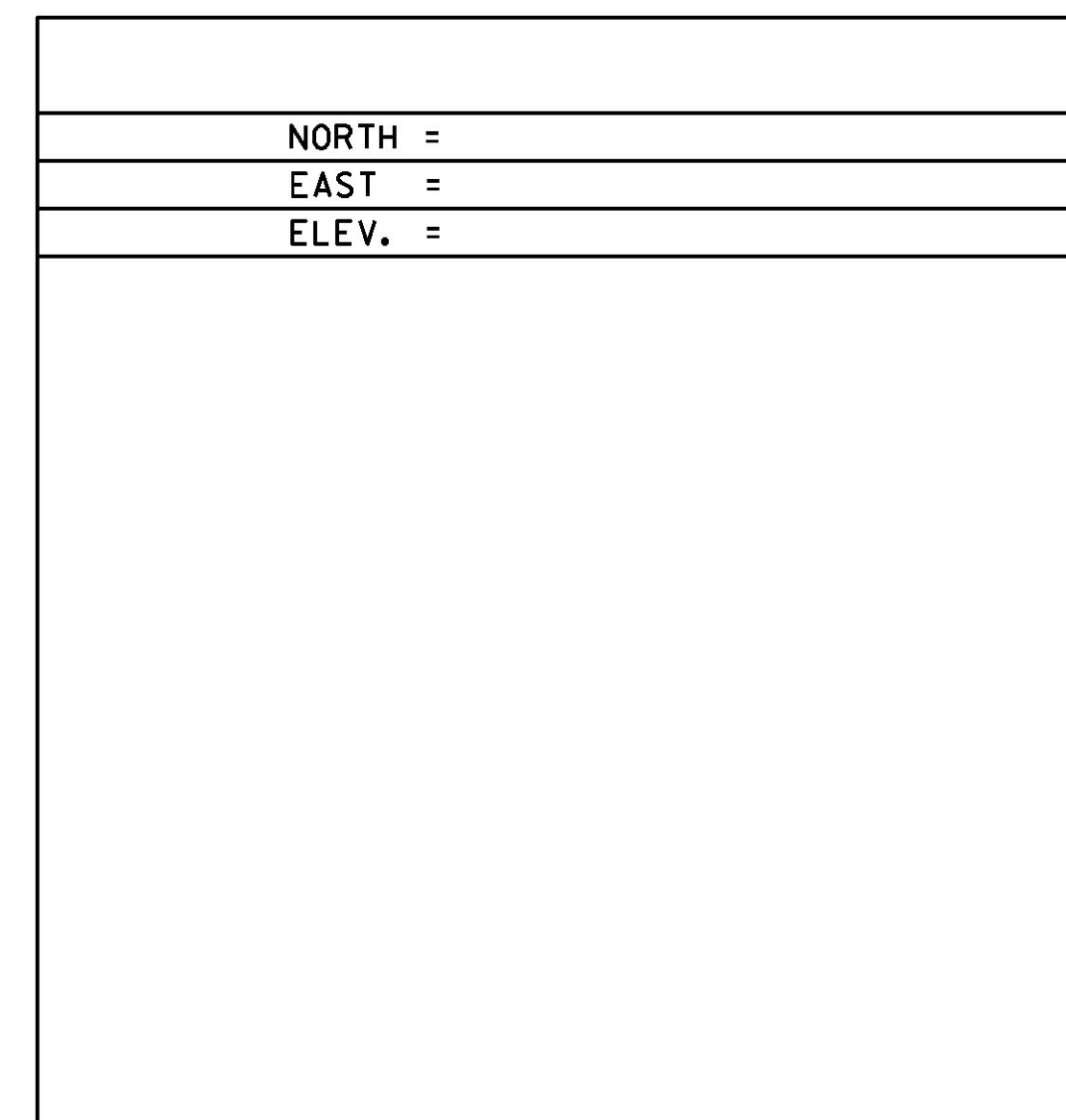
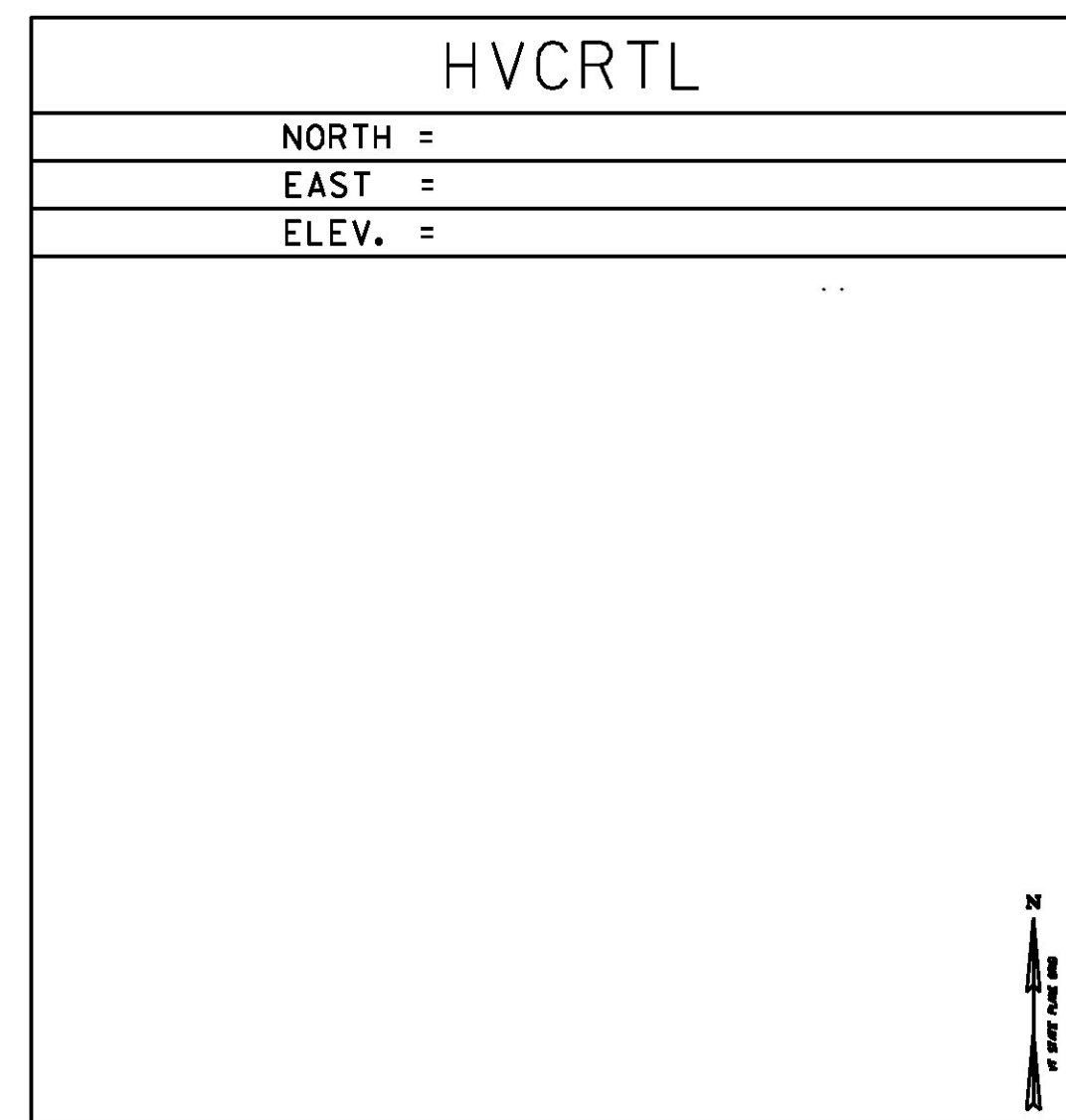
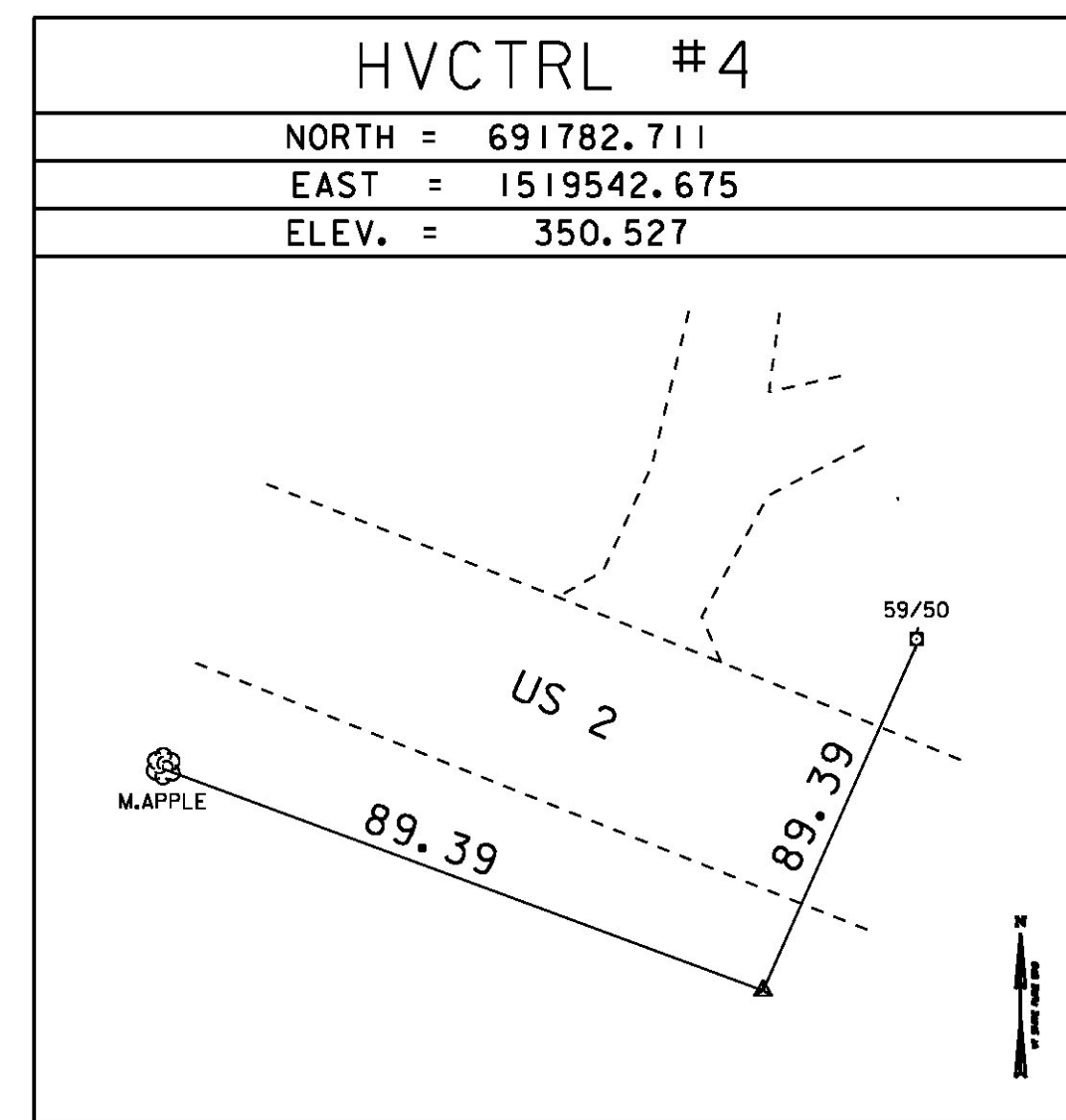
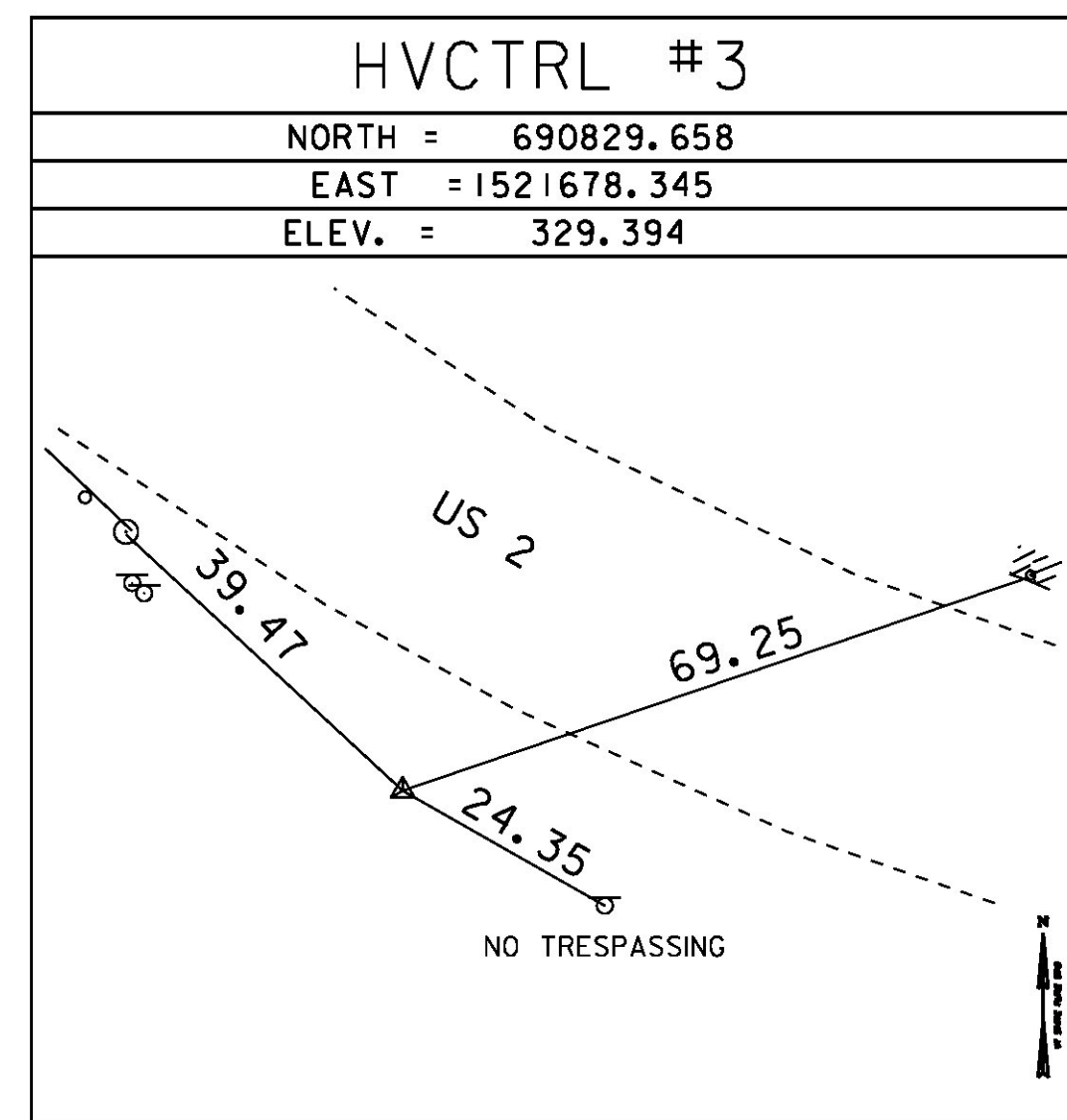
THE MARK IS LOCATED ON INTERSTATE 89 IN THE SOUTHEAST SIDE OF THE U-TURN BETWEEN MILE MARKERS 74.40 AND 74.45. THIS IS THE MOST NORTHERN OF TWO U-TURNS JUST NORTH OF THE BRIDGES OVER US ROUTE 2 IN JONESVILLE. THE MARK IS SET 20 CM (8 INCHES) BELOW GROUND SURFACE IN THE TOP OF A FENO STYLE MONUMENT. IT IS 7.9 M (25.9 FT) SOUTHEAST OF AND ABOUT 0.6 M (2.0 FT) LOWER THAN THE CENTERLINE OF THE U-TURN, 11.3 M (37.1 FT) SOUTHWEST OF THE SOUTHWEST EDGE OF PAVEMENT OF THE NORTHBOUND LANE, 3.7 M (12.1 FT) NORTHEAST OF THE NORTHEAST EDGE OF PAVEMENT OF THE SOUTHBOUND LANE, 8.3 M (27.2 FT) SOUTHWEST OF THE MOST SOUTHWESTERLY POST FOR A U-TURN SIGN AND 0.3 M (1.0 FT) SOUTHEAST OF A FIBERGLASS WITNESS POST.

SNIPE
 NORTH = 690764.170
 EAST = 1522549.836
 ELEV. = 316.480

TO REACH FROM THE CENTER OF THE I-89 BRIDGES OVER US ROUTE 2 JUST NORTHWEST OF JONESVILLE, GO NORTHERLY ALONG US ROUTE 2 FOR 0.6 MI (1.0 KM) TO THE SITE OF THE MARK ON THE LEFT ABOUT OPPOSITE OF SNIPE IRELAND ROAD. THE MARK IS SET 20 CM (8 INCHES) BELOW GROUND SURFACE IN THE TOP OF A FENO STYLE MONUMENT. IT IS 6.0 M (19.7 FT) SOUTH OF AND ABOUT 0.3 M (1.0 FT) LOWER THAN THE CENTERLINE OF US ROUTE 2, 8.5 M (27.9 FT) WEST OF POLE NO 94-50, 34.6 M (113.5 FT) EAST OF POLE NO 94, 24.3 M (79.7 FT) WEST-SOUTHWEST OF THE SOUTHWEST CORNER OF BRIDGE NO 32 OVER SNIPE IRELAND BROOK AND 4.0 M (13.1 FT) WEST-SOUTHWEST OF THE WEST-SOUTHWEST END OF A STEEL BEAM GUARD RAIL POST.

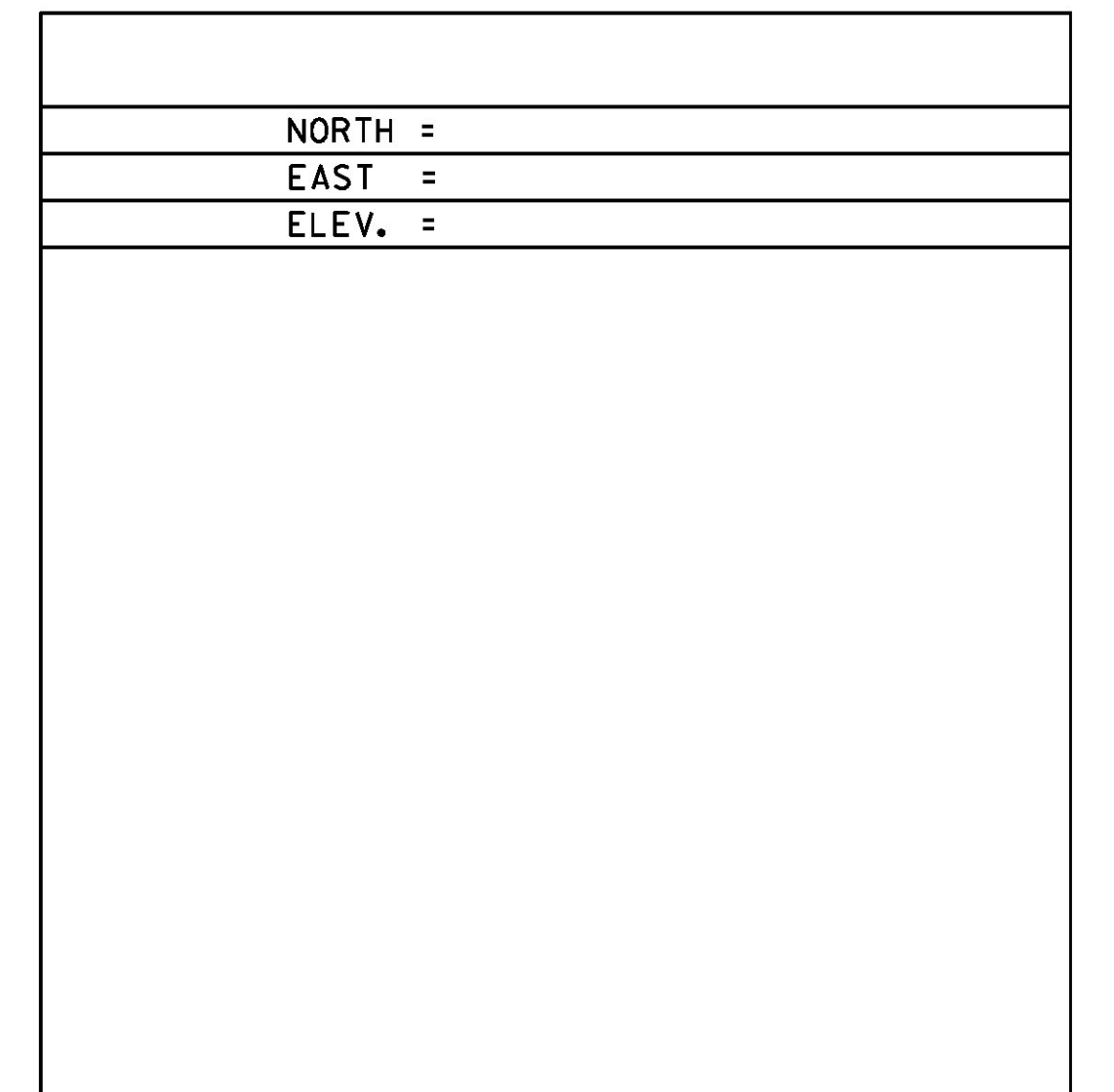
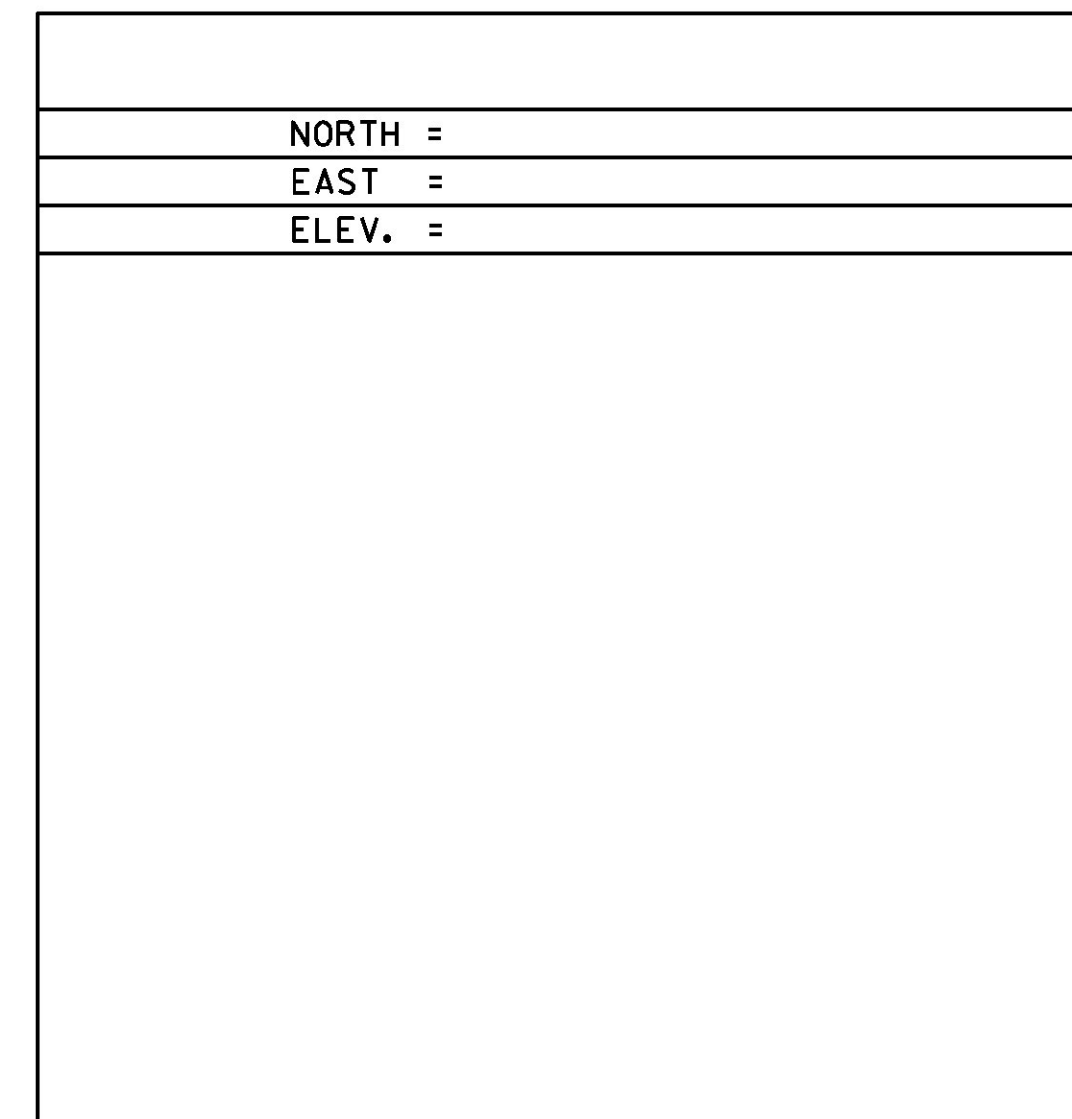
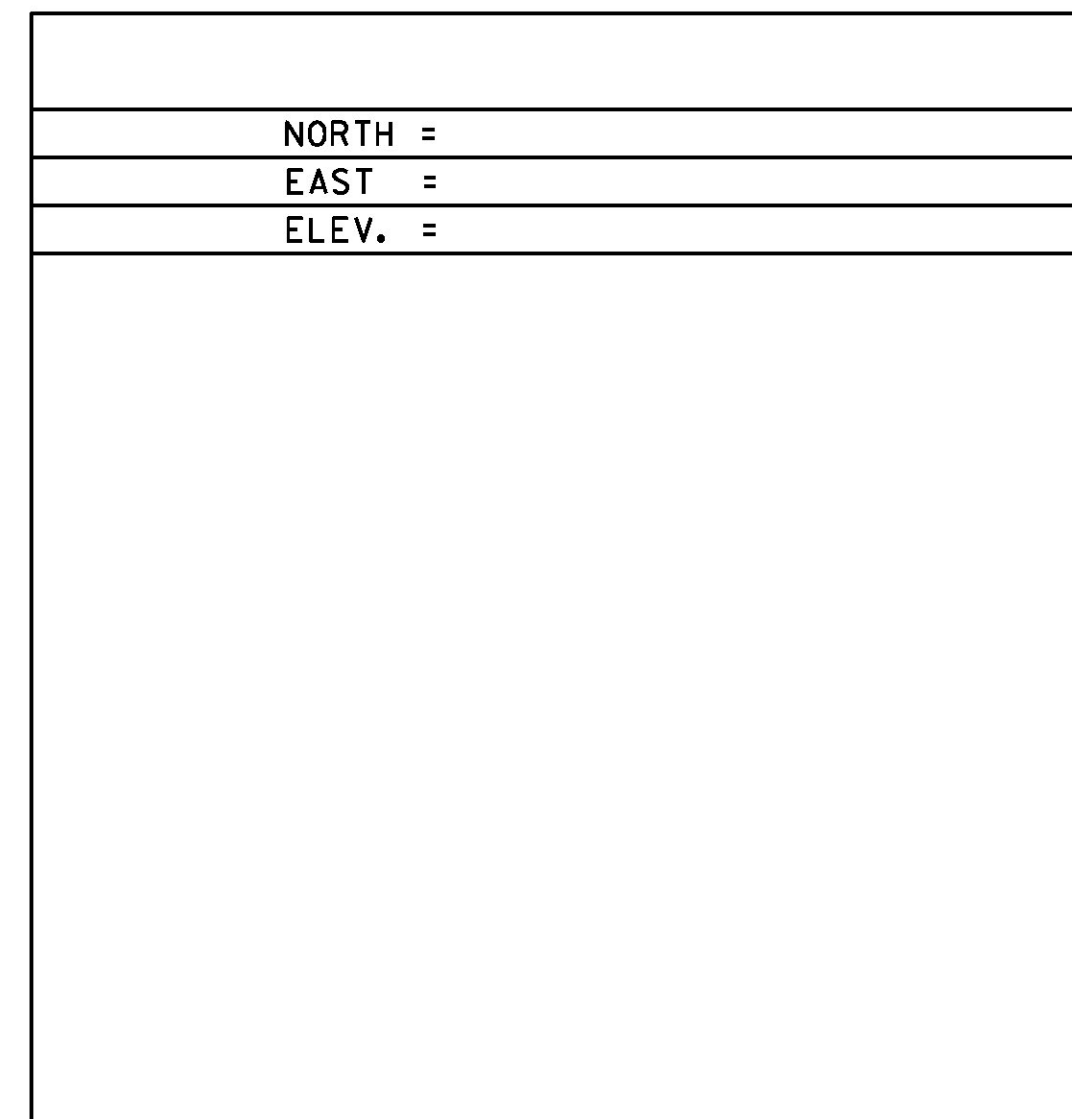
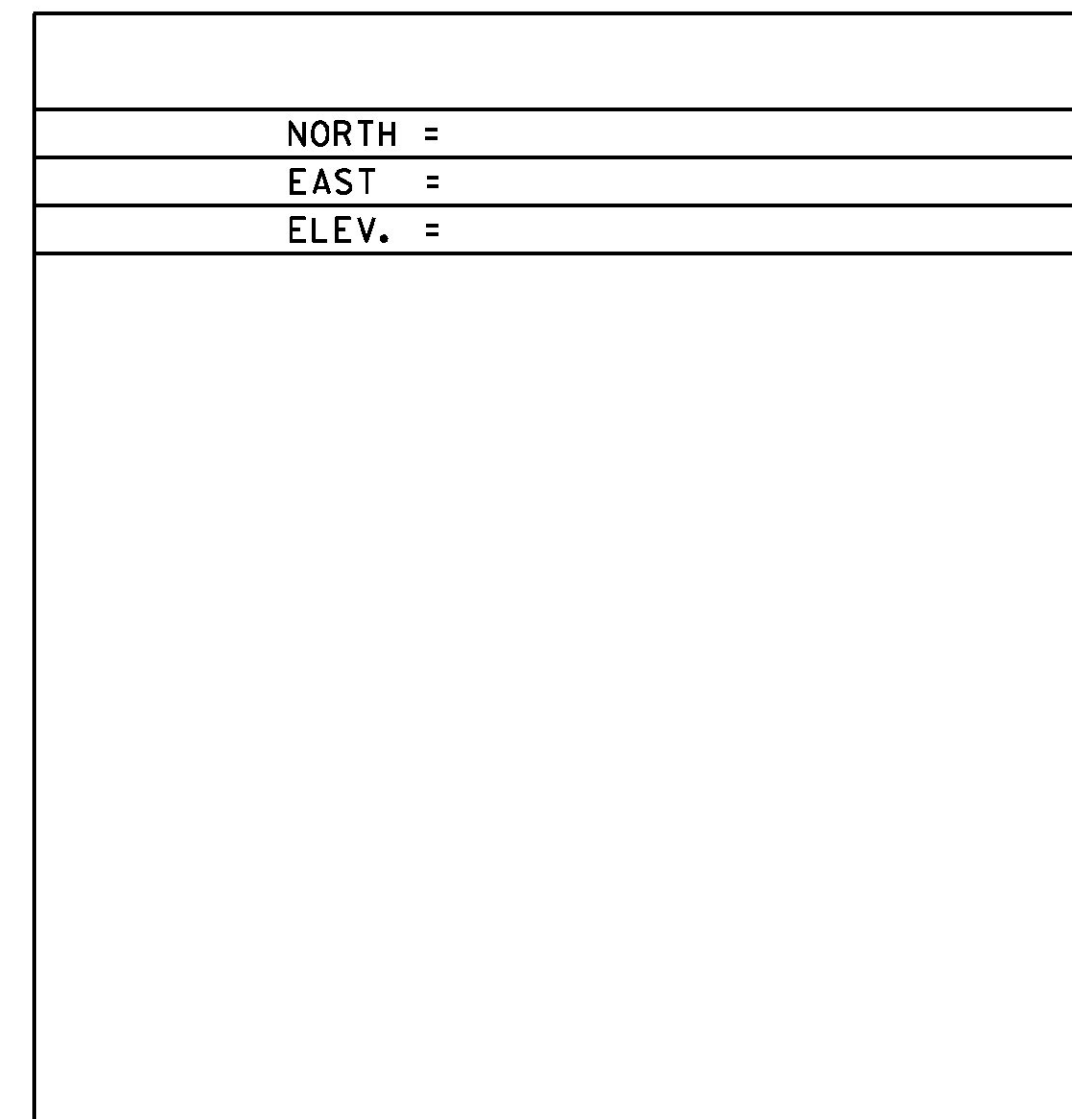
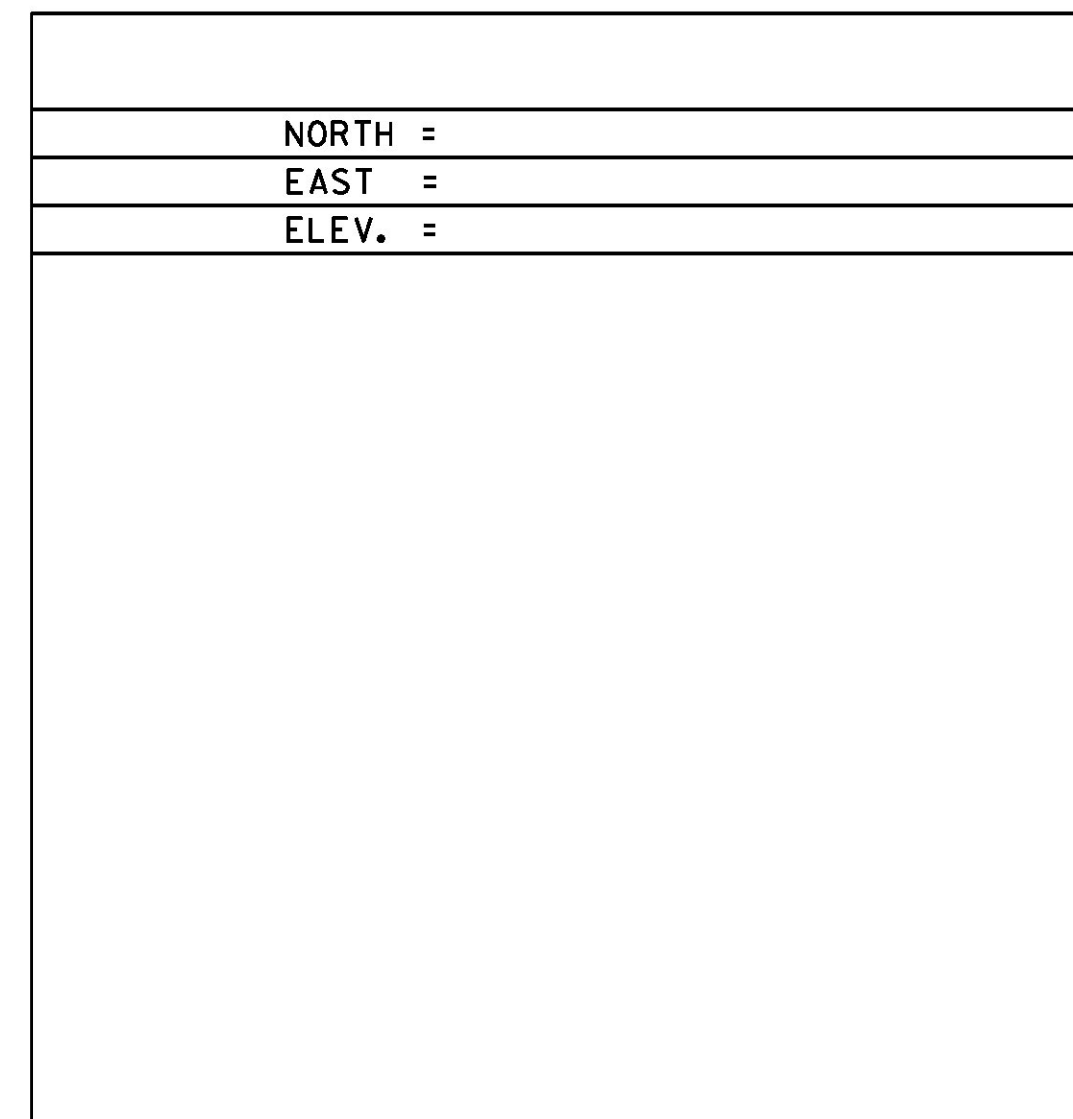
GPS POINTS SET BY VTrans GSU 5/20/13

TRAVERSE TIES



TRAVERSE COMPLETED 6/12/2013 BY L. ORVIS P.C. & G. HITCHCOCK

ALIGNMENT TIES



DATUM
 VERTICAL NAVD 88
 HORIZONTAL NAD 83 (2011)
 ADJUSTMENT COMPASS

PROJECT NAME: RICHMOND	PLOT DATE: 13-SEP-2016
PROJECT NUMBER: BF 0284(28)	DRAWN BY: G. HITCHCOCK
FILE NAME: survey\13C070\1.dgn	CHECKED BY: P. BEYOR
PROJECT LEADER: R. YOUNG	TIE SHEET
DESIGNED BY: VTRANS	SHEET 10 OF 54