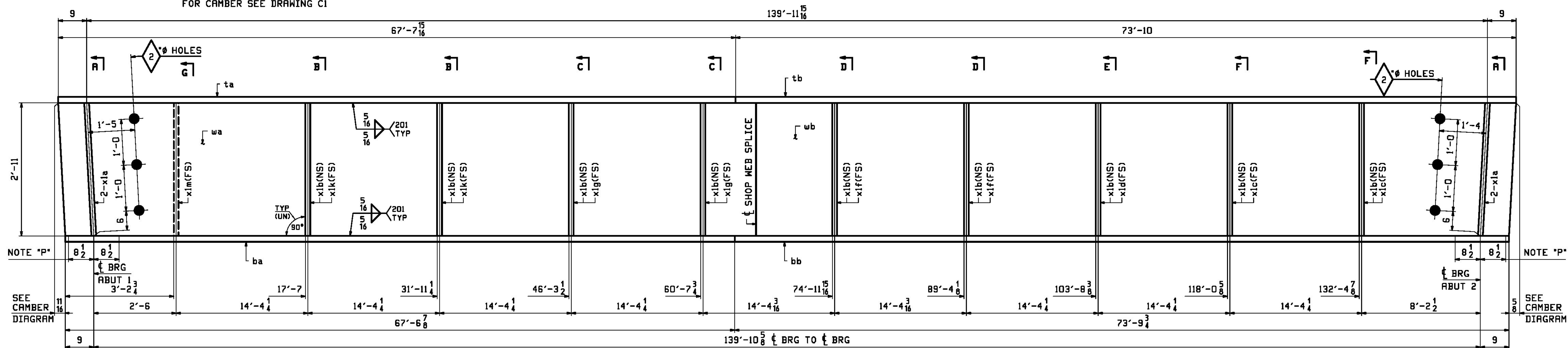


DEV. ORIENTATION DIAGRAM FOR CAMBER SEE DRAWING C1

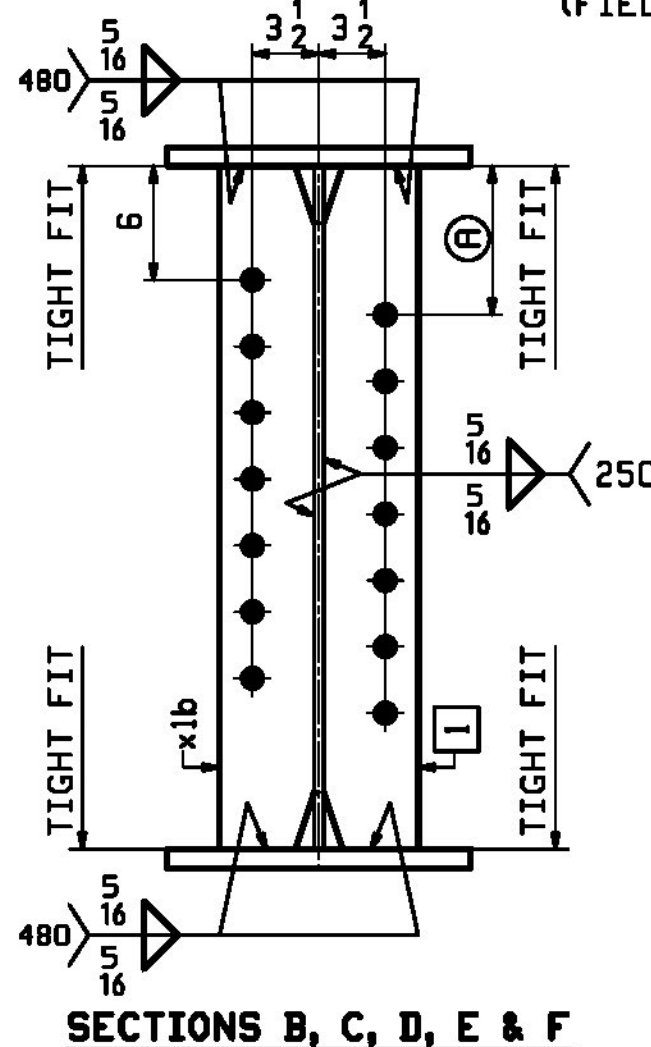
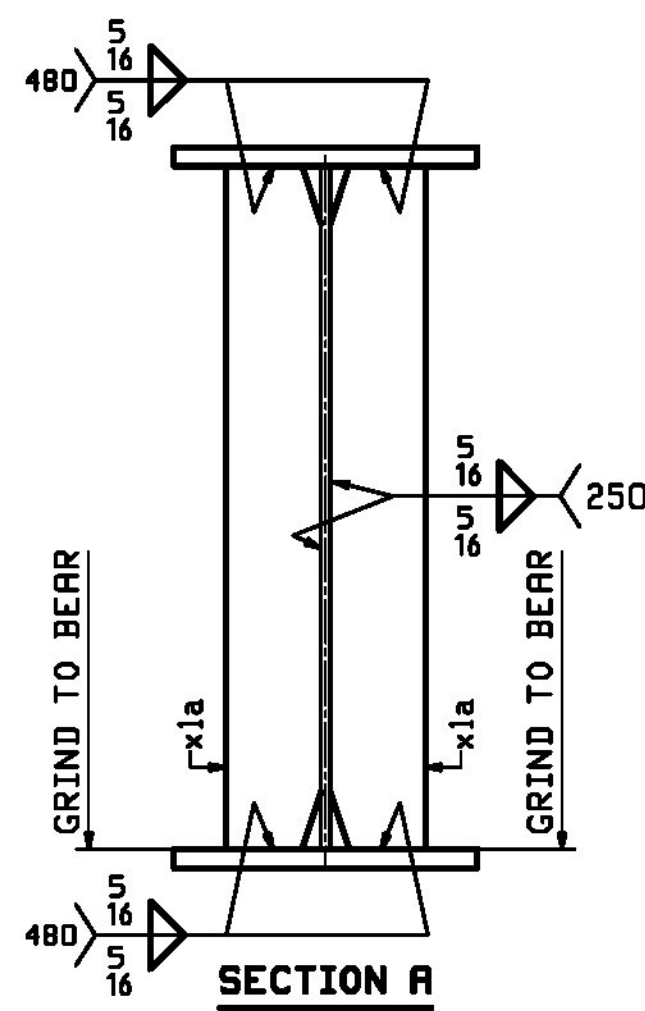
JOB NO.		DRAWING NO.		REV.		JOB NO.		DRAWING NO.		REV.										
706-1		4		4		706-1		4		4										
ABM INFO	SHIP	QTY	MARK	MATERIAL	LENGTH FT	INCHES	REMARKS	WT	PROCUREMENT NOTES	ABM INFO	SHIP	QTY	MARK	MATERIAL	LENGTH FT	INCHES	REMARKS	WT	PROCUREMENT NOTES	
3	B	4	x1a	PL 7/8x7 1/2	2	11	(ONE)	65		4G4	1			GIRDER						43810
3	C	9	x1b	PL 2x5	2	11		25												
3	C	2	x1c	PL 2x5	2	11		25												
3	C	1	x1d	PL 2x5	2	11		25		2	A	1	wa	PL 1/2x35	71	9 3/4	M270-SGT2			4276
3	C	2	x1e	PL 2x5	2	11		25		2	J	1	wb	PL 1/2x35	69	8 5/8	M270-SGT2			4150
3	C	2	x1f	PL 2x5	2	11		25		1	Y	1	ta	PL 2x16	67	7 5/8	M270-SGT2			7368
3	C	2	x1g	PL 2x5	2	11		25		1	Q	1	tb	PL 2x16	79	10	M270-SGT2			8040
3	C	2	x1k	PL 2x5	2	11		25		1	N	1	ba	PL 2 1/2x16	67	6 1/2	M270-SGT2			9197
3	C	1	x1m	PL 2x5	2	11		25		1	E	1	bb	PL 2 1/2x16	79	9 3/4	M270-SGT2			10047



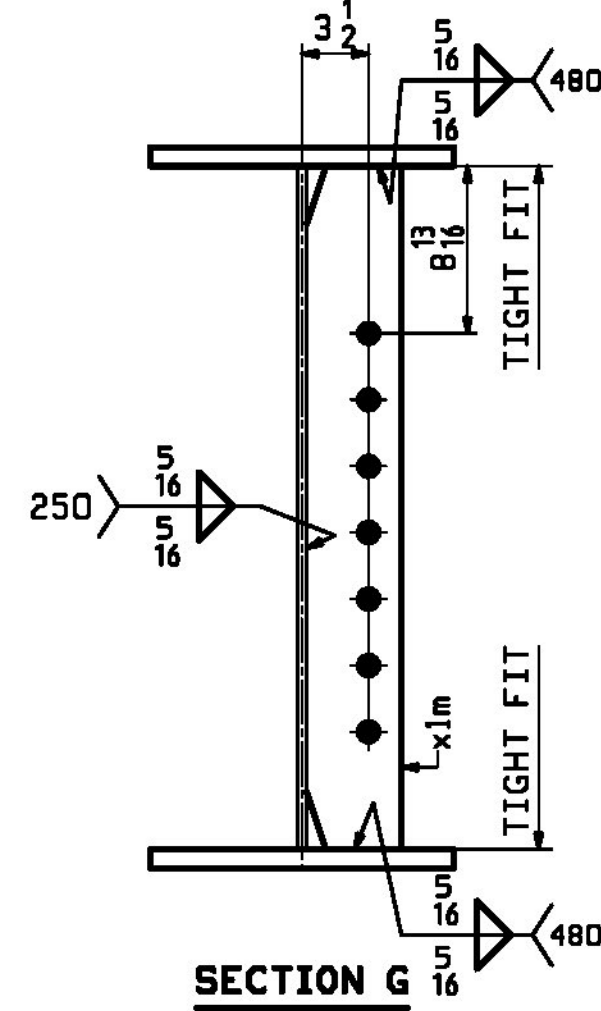
ONE - GIRDER - 4G4 (DEVELOPED)

FOR GIRDER STANDARDS DETAILS SEE DRAWING X1.
 FOR CAMBER & HORIZONTAL CURVING DIAGRAMS SEE DRAWING C1.
 FOR FLANGE DIAGRAM SEE DRAWING F1.
 FOR GENERAL NOTES SEE DRAWING GNI.
 T2 DENOTES MATERIAL SUBJECT TO CHARPY V-NOTCH TESTING.

NOTE "P":
 MASK EDGES OF BOTTOM FLANGE DURING METALIZING.
 (FIELD WELDED SOLE PLATE).



SECTION	MARK	QTY
B	x1k	8 3/8
C	x1g	7 15/16
D	x1f	7 7/16
E	x1d	7
F	x1c	6 1/2



Vermont Agency of Transportation
RECEIVED

CK'D BY _____ OK'D BY GFR

May 7, 2017

RESUBMIT No Approved
 BY C. Carlson DATE 05/09/2017

REV.	DATE	REMARKS	DWN	CHK	APVL	SHOP
5/2/17		APPROVAL COMMENT	JTB	DBH		
0						

MATERIAL: M270-50 (UN) SURFACE PREP. & PAINT: SEE DWG GNI HOLES: 15/16 (UN) SHOP BOLTS: NONE

DESCRIPTION: GIRDER - 4G4

CASCO BAY STEEL STRUCTURES, INC.
 1 WALLACE AVE. PHONE (207) 780-6722
 SOUTH PORTLAND, ME 04106 FAX. (207) 780-6726

STRUCTURE: ROUTE VT 25B OVER WAITS RIVER RURAL MAJOR COLLECTOR BRIDGE NO. 1 BRADFORD COUNTY OF ORANGE
 DRAWN: JTB DATE: 02/27
 CHKD: DBH DATE: 03/13

LOCATION: TOWN OF BRADFORD, VERMONT JOB NO. 706-1 DNG NO. 4
 PROJ NO. BF D191(29) REV. 4
 CUSTOMER: A.L.ST. ONGE