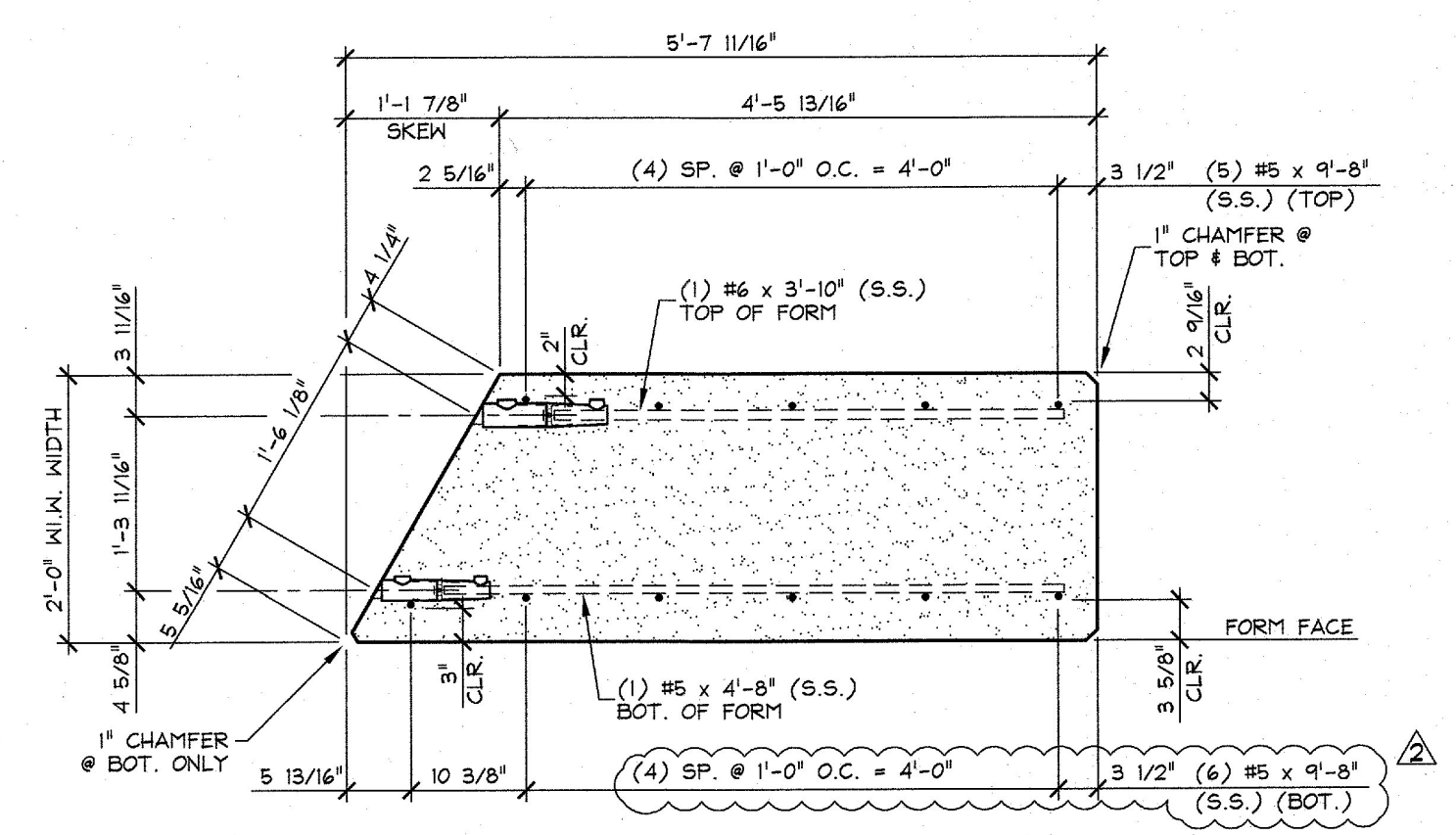
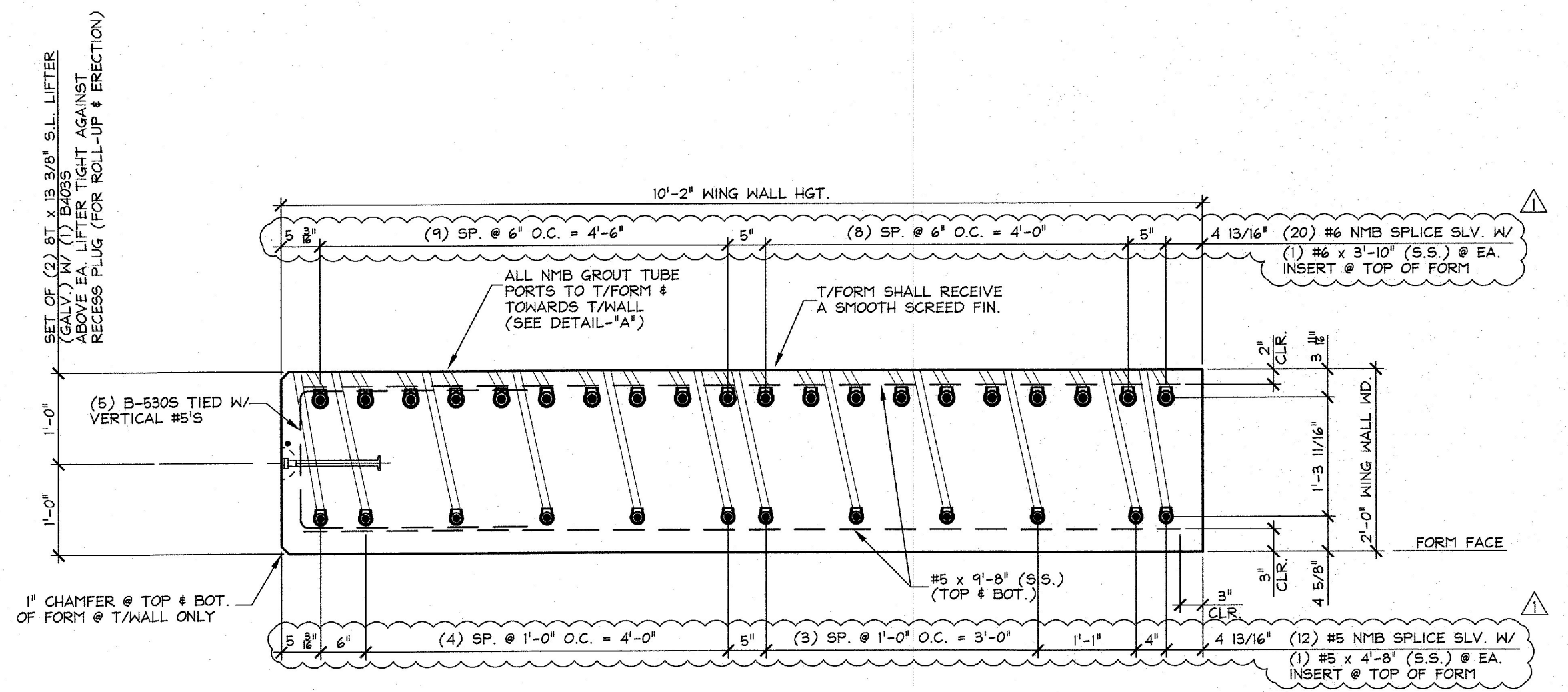


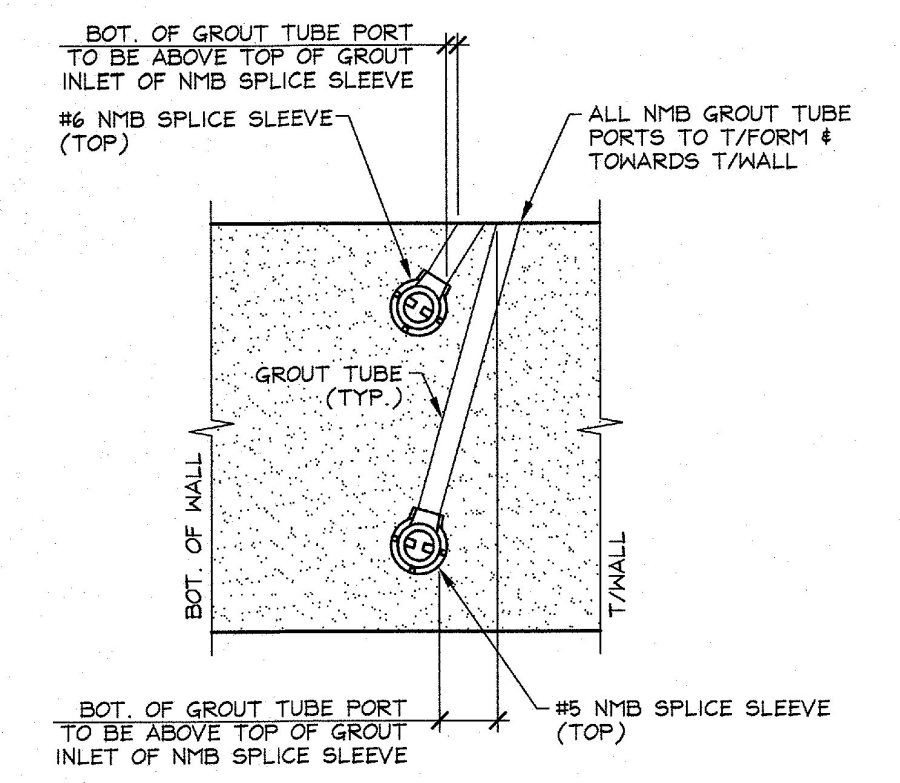
1 PLAN VIEW IN FORM 'W-M-W3'
WMB
1/2" = 1'-0"



3 BOTTOM ELEVATION
WMB
3/4" = 1'-0"



4 SIDE ELEVATION IN FORM
WMB
3/4" = 1'-0"



DETAIL - "A"
N.T.S.

SHOP NOTE:
28-DAY STRENGTH = 5,000 PSI
HANDLING STRENGTH = 3,500 PSI
MIX #445M3CC

| MATERIAL LIST / WINGWALL | | | |
|--------------------------|--------|---------------------------------|------|
| ITEM | MARK | DESCRIPTION | QTY. |
| 1 | | #6 NMB SPLICE SLEEVE (GALV.) | (20) |
| 2 | | #5 NMB SPLICE SLEEVE (GALV.) | (12) |
| 3 | B-5305 | #5 BENT BAR (STAINLESS STEEL) | 5 |
| 4 | B-4035 | #4 BENT BAR (STAINLESS STEEL) | 2 |
| 5 | | | |
| 6 | | #6 x 3'-10" (S.S.) | (20) |
| 7 | | #5 x 4'-8" (S.S.) | (12) |
| 8 | | #5 x 9'-8" (S.S.) | 11 |
| 9 | | | |
| 10 | | | |
| 11 | | | |
| 12 | | BT x 13 3/8" SWIFT LIFT (GALV.) | 2 |
| 13 | | 4T x 7 1/8" SWIFT LIFT (GALV.) | 4 |
| 14 | | | |
| 15 | | | |

Vermont Agency of Transportation
RECEIVED
CK'D BY _____ OK'D BY G. ROY
March 14, 2017
RESUBMIT NO Approved
BY C. CARLSON DATE 03/15/2017
3/14/17 REVISED AS PER ENGINEERS COMM. T.D.
2/24/17 REVISED AS PER ENGINEERS COMM. T.D.

APPROVAL STAMP:

J.P. CARRARA & SONS INC.
Precast & Prestress Manufacturer
244 DEX ST., WOODBURY, VERMONT 05753 Phone: (802)388-6361 Fax: (802)388-9010

A.L. ST. ONGE
CONTRACTOR
MONTGOMERY, VERMONT

STATE OF VERMONT AGENCY OF TRANSPORTATION
COUNTY OF ORANGE

TOWN OF BRADFORD
VT 25B (RURAL MAJOR COLLECTOR)
BRIDGE NO.: 1 PROJECT NO.: BF 0191 (29)

DATE: DEC. 21, 2016
SCALE: NOTED
CHKD: DFTM: T.D.
JOB NO: 23506-016
DWG. NO: WMB

PRECAST WING WALL DETAILS