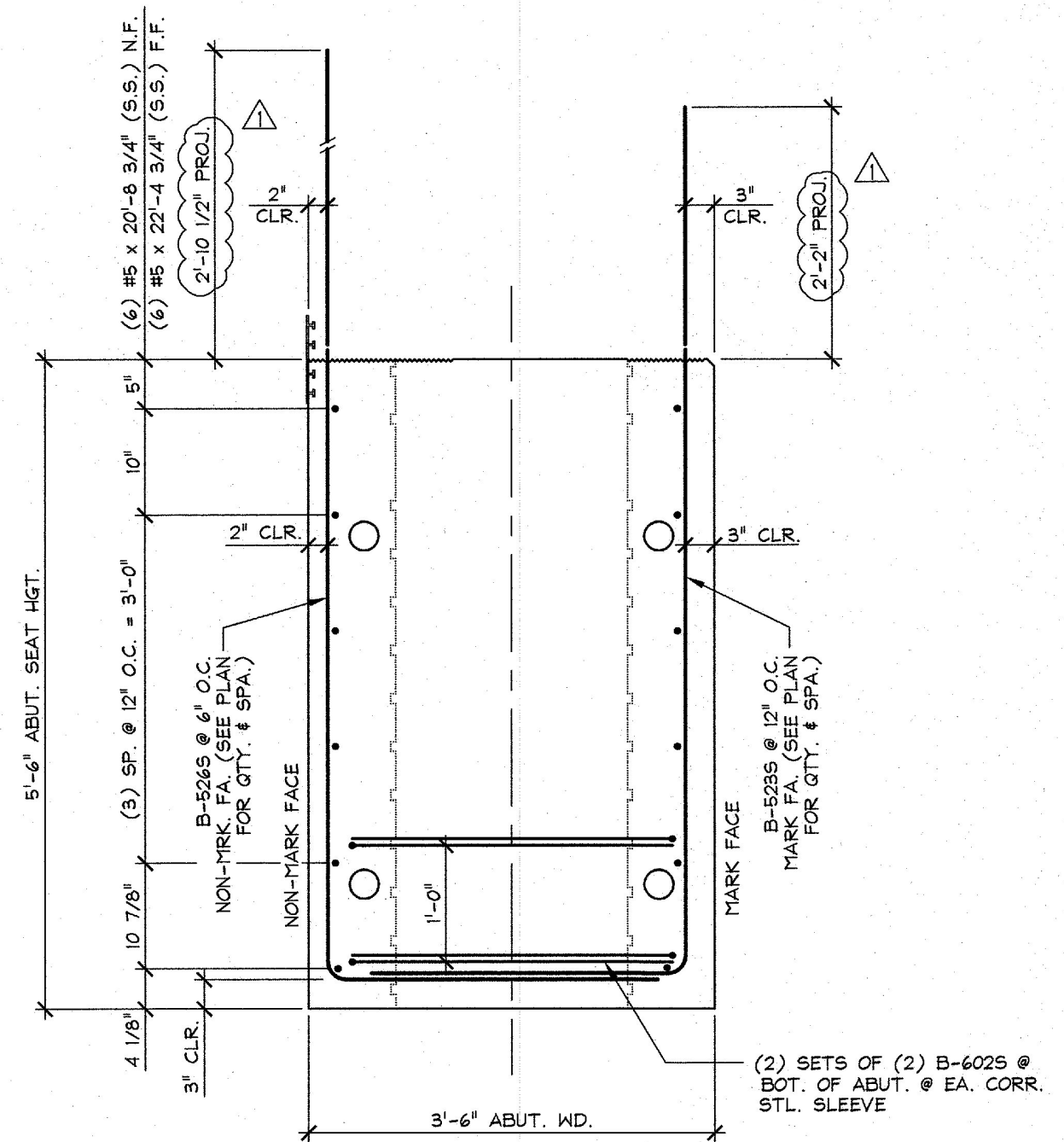
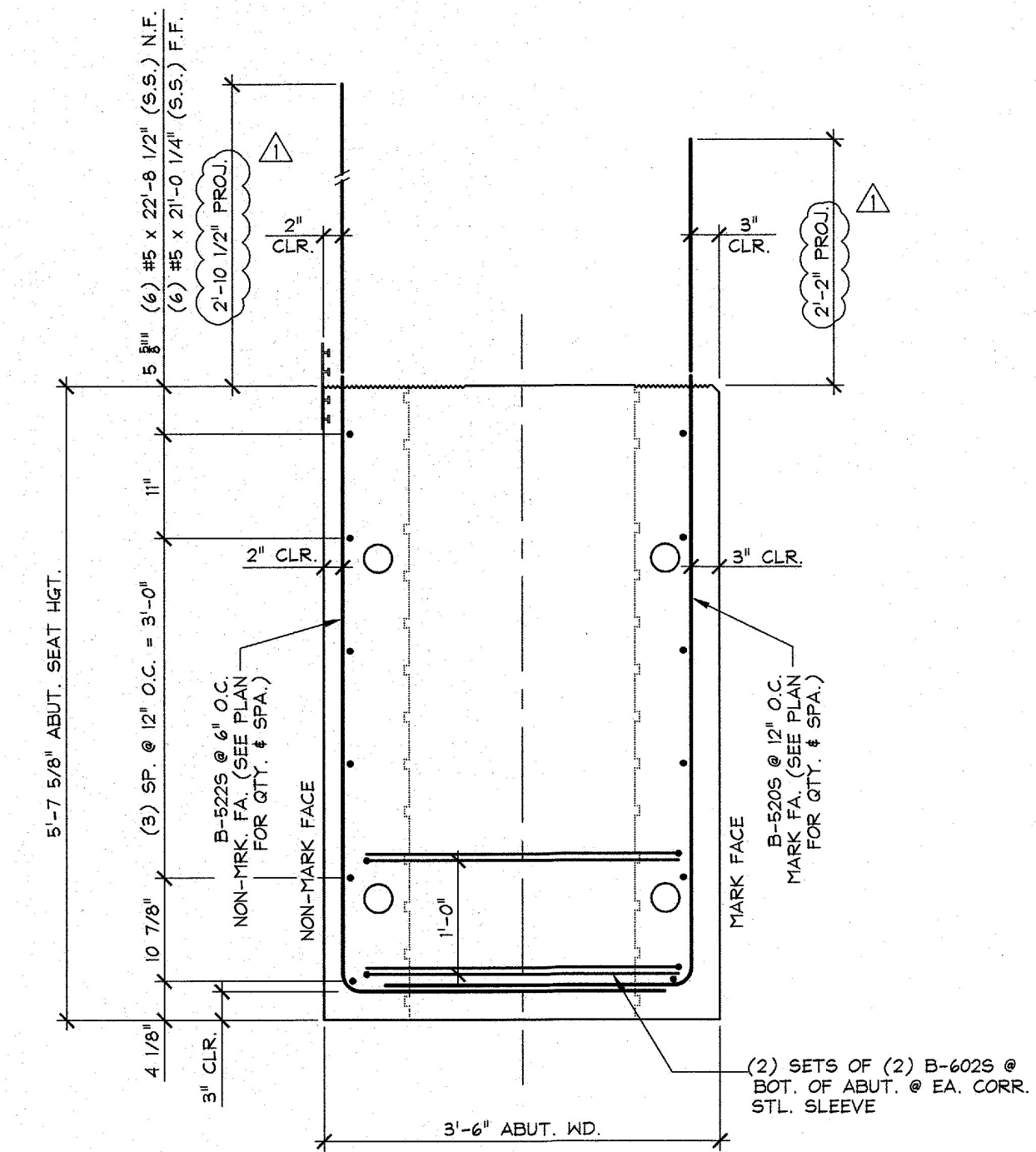


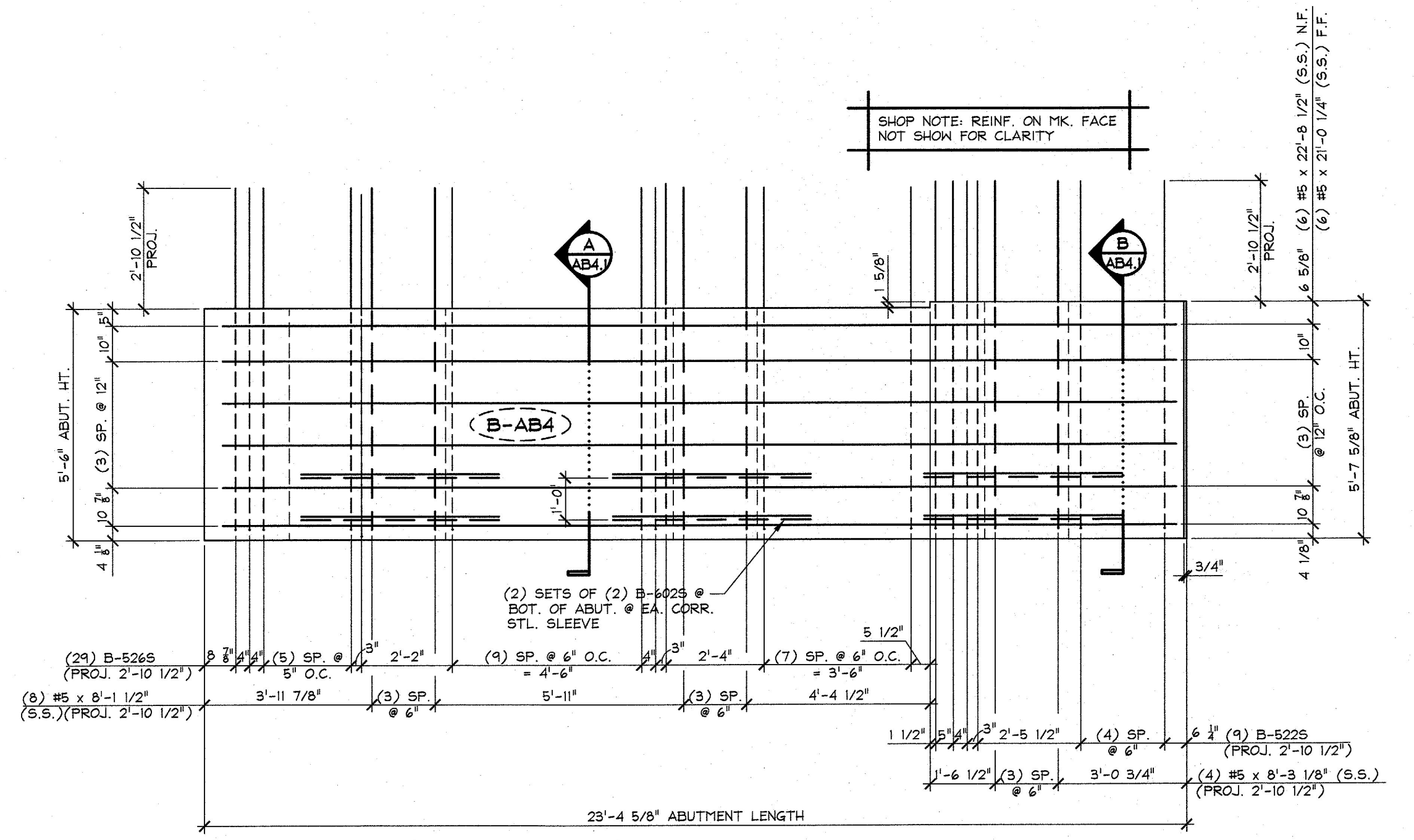
1 ABUTMENT PLAN VIEW IN FORM 'B-AB4'  
AB4.1 3/8" = 1'-0"



A REINFORCING SECTION  
AB4.1 3/4" = 1'-0"



B REINFORCING SECTION  
AB4.1 3/4" = 1'-0"



2 ABUTMENT REINF. ELEVATION - NON MARK FACE  
AB4.1 3/8" = 1'-0"

MARK: B-AB4 QTY.: 1			
MATERIAL LIST / ABUTMENT			
ITEM	MARK	DESCRIPTION	QTY.
1	B-5205	#5 BENT BAR (STAINLESS STEEL)	4
2	B-5215	#5 BENT BAR (STAINLESS STEEL)	1
3	B-5225	#5 BENT BAR (STAINLESS STEEL)	9
4	B-5235	#5 BENT BAR (STAINLESS STEEL)	10
5	B-5245	#5 BENT BAR (STAINLESS STEEL)	3
6	B-5265	#5 BENT BAR (STAINLESS STEEL)	29
7			
8			
9			
10			
11	B-6025	#6 BENT BAR (STAINLESS STEEL)	12
12			
13		#5 x 7'-5" (STAINLESS STEEL)	4
14		#5 x 7'-6 5/8" (STAINLESS STEEL)	2
15		#5 x 8'-1 1/2" (STAINLESS STEEL)	8
16		#5 x 8'-3 1/8" (STAINLESS STEEL)	4
17			
18			
19			
20		#5 x 22'-8 1/2" (STAINLESS STEEL)	6
21		#5 x 21'-0 1/4" (STAINLESS STEEL)	6
22			

F:\VT-Bridges\23506-16 Bradford Abutments\23506-AB4.dwg, 2/28/2017 2:37:34 PM

Vermont Agency of Transportation  
**RECEIVED**  
 CK'D BY \_\_\_\_\_ OK'D BY G. ROY  
 March 14, 2017  
 RESUBMIT NO Approved  
 BY C. CARLSON DATE 03/15/2017  
 2/24/17 REVISED AS PER ENGINEERS COMM. T.D.

APPROVAL STAMP:	<b>J.P. CARRARA &amp; SONS INC.</b> Precast & Prestress Manufacturer 2844 CASE ST., MIDDLEBURY, VERMONT 05753 Phone: (802)388-6361 Fax: (802)388-9010		A.I. ST. ONGE CONTRACTOR MONTGOMERY, VERMONT
	STATE OF VERMONT AGENCY OF TRANSPORTATION COUNTY OF ORANGE		DATE: DEC. 21, 2016
	TOWN OF BRADFORD VT 25B (RURAL MAJOR COLLECTOR) BRIDGE NO.: 1 PROJECT NO.: BF 0191 (29)		SCALE: NOTED
	PRECAST ABUTMENT 'B-AB4' REINFORCING DETAILS		CHKD: _____ DFTM: T.D. JOB NO: 23506-016 DWG. NO: AB4.1