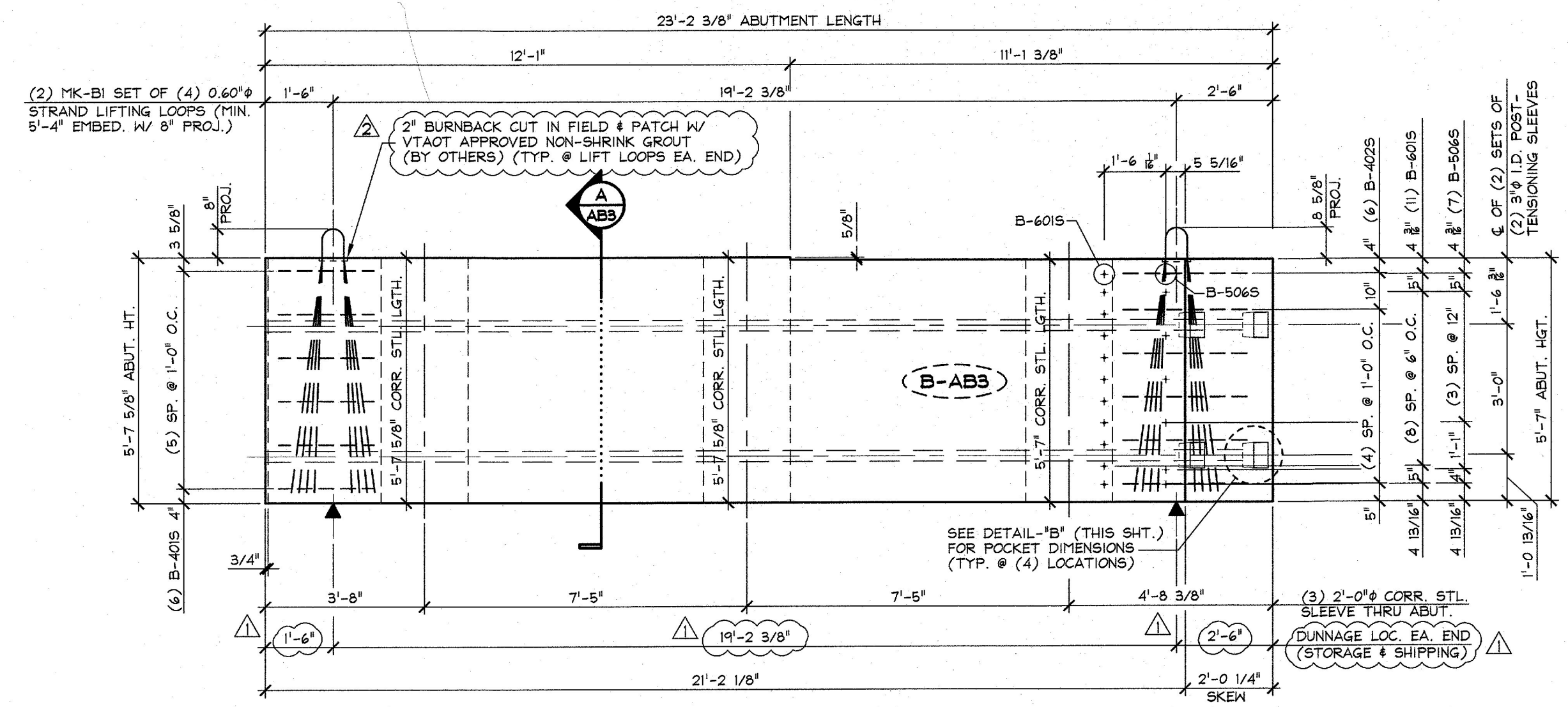
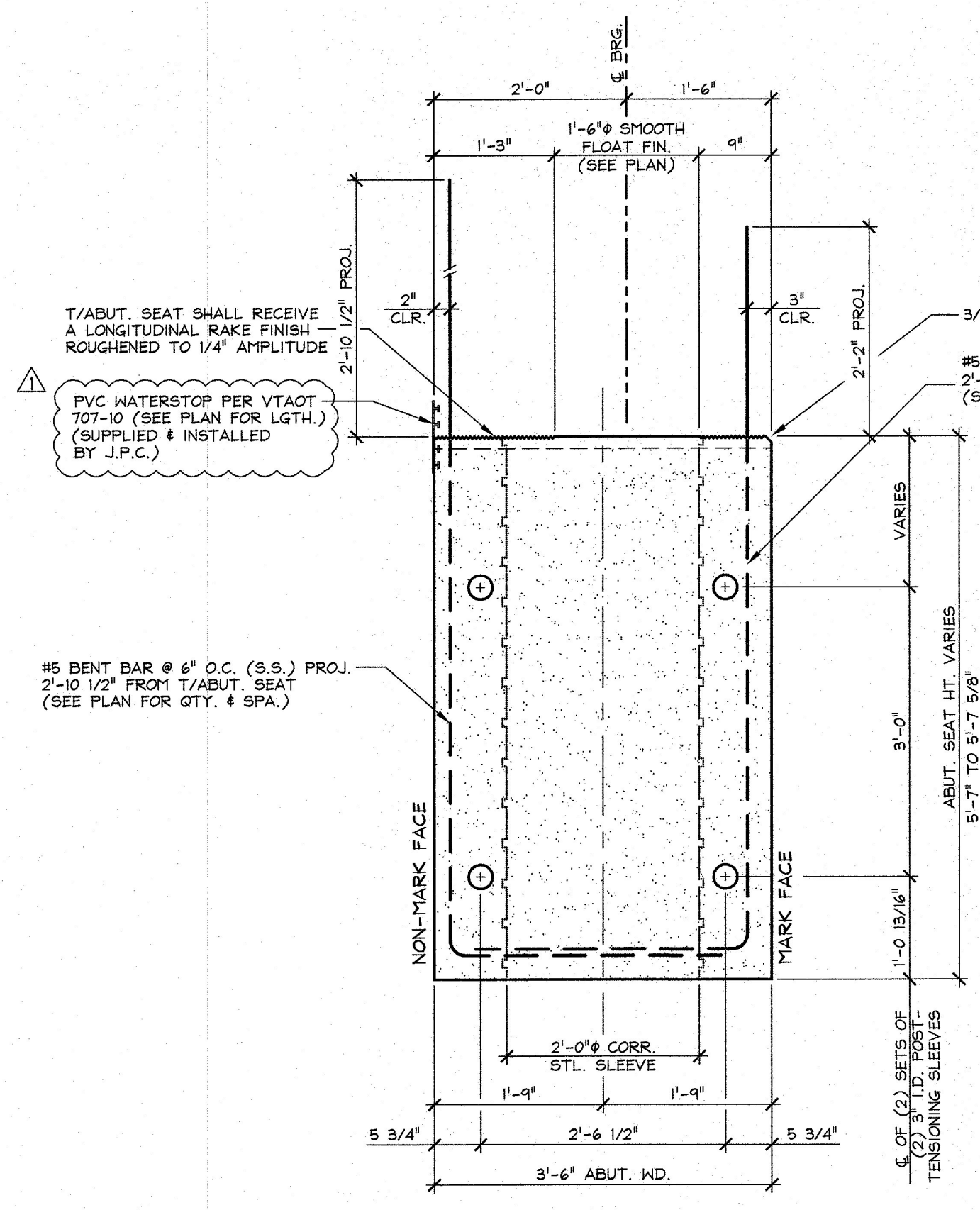


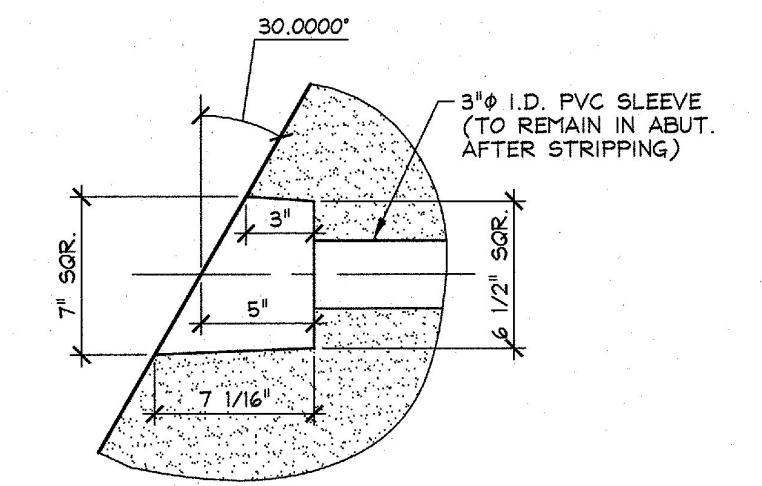
1 ABUTMENT PLAN VIEW IN FORM 'B-AB3'
3/8" = 1'-0"



2 ABUTMENT ELEVATION - NON-MARK FACE
3/8" = 1'-0"



A DIMENSIONAL SECTION
3/4" = 1'-0"



DETAIL - "B"
1 1/2" = 1'-0"

SHOP NOTE: SEE DRAWING NO. 'AB3.1' FOR ABUTMENT REINFORCING

SHOP NOTE: 28-DAY STRENGTH = 5,000 PSI HANDLING STRENGTH = 3,500 PSI MIX #445MSSCC

MATERIAL LIST / ABUTMENT			
ITEM	MARK	DESCRIPTION	QTY.
1	B-4015	#4 BENT BAR (STAINLESS STEEL)	6
2	B-4025	#4 BENT BAR (STAINLESS STEEL)	6
3			
4	B-5065	#5 BENT BAR (STAINLESS STEEL)	7
5	B-6015	#6 BENT BAR (STAINLESS STEEL)	(1)
6			
7		P.V.C. WATERSTOP PER VTAOT 707-10	18.87 LF
8			
9		2'-0" x 5'-7 5/8" CORRUGATED STEEL SLEEVE	2
10		2'-0" x 5'-7" CORRUGATED STEEL SLEEVE	1
11			
12			
13			
14	MK-BI	SET OF (4) 0.60" STRAND LIFTING LOOPS x 5'-11 1/2" LONG	2
15			

Vermont Agency of Transportation
RECEIVED

CK'D BY _____ OK'D BY G. ROY
March 14, 2017

RESUBMIT NO Approved
BY C. CARLSON DATE 03/15/2017

3/14/17 REVISED AS PER ENGINEERS COM. T.D.
2/24/17 REVISED AS PER ENGINEERS COM. T.D.

APPROVAL STAMP:

J.P. CARRARA & SONS INC.
Precast & Prestress Manufacturer
2464 ONE STR. MIDDLEBURY, VERMONT 05753 Phone: (802) 388-6361 Fax: (802) 388-9010

A.L. ST. ONGE
CONTRACTOR
MONTGOMERY, VERMONT

STATE OF VERMONT AGENCY OF TRANSPORTATION
COUNTY OF ORANGE

TOWN OF BRADFORD
VT 255 (RURAL MAJOR COLLECTOR)
BRIDGE NO. 1 PROJECT NO.: BF 0191 (29)

DATE: DEC. 21, 2016
SCALE: NOTED
CHKD: _____ DFTM: T.D.
JOB NO: 23506-016

PRECAST ABUTMENT 'W-AB3'
DIMENSIONAL DETAILS

DWG. NO: AB3