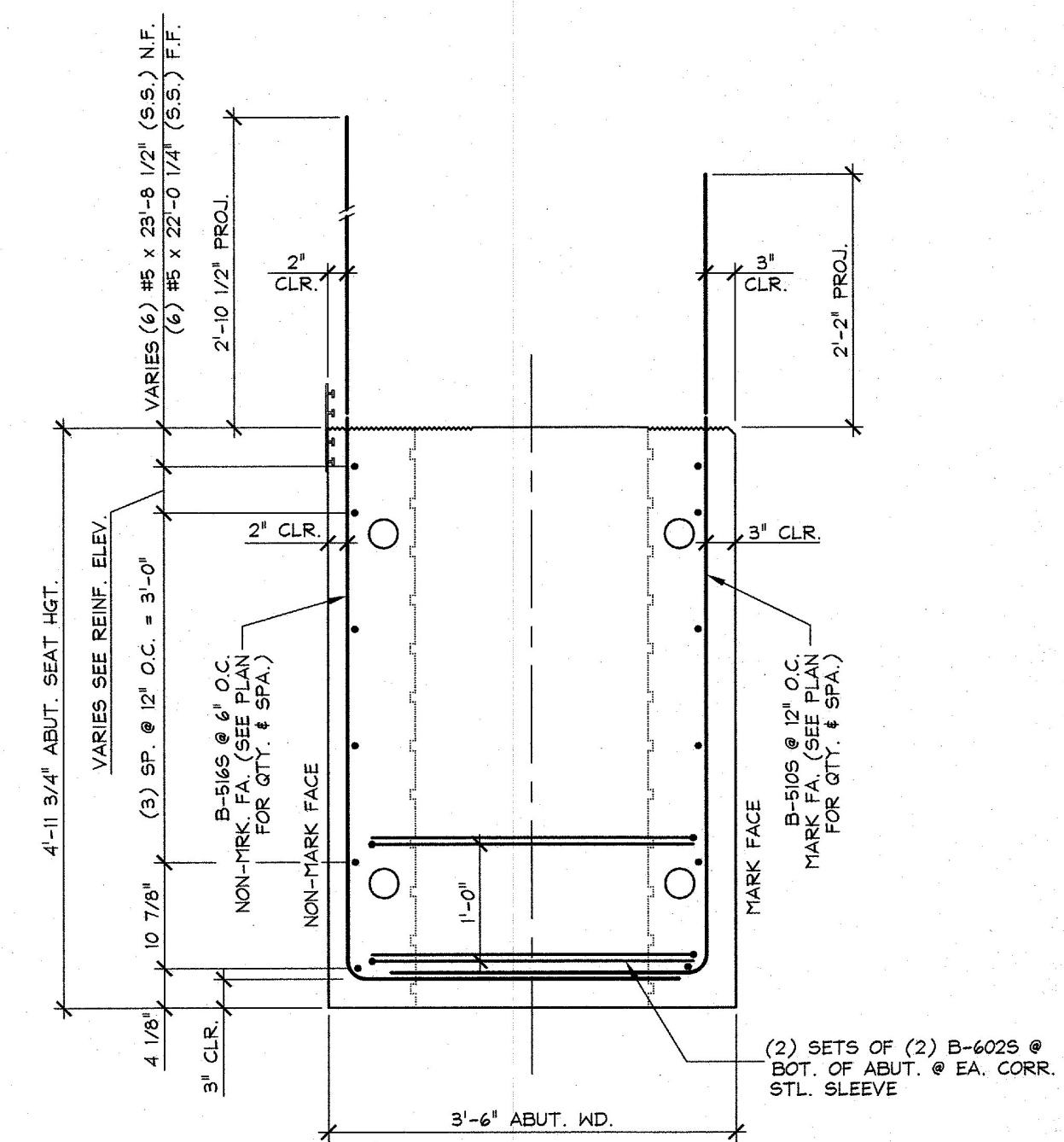
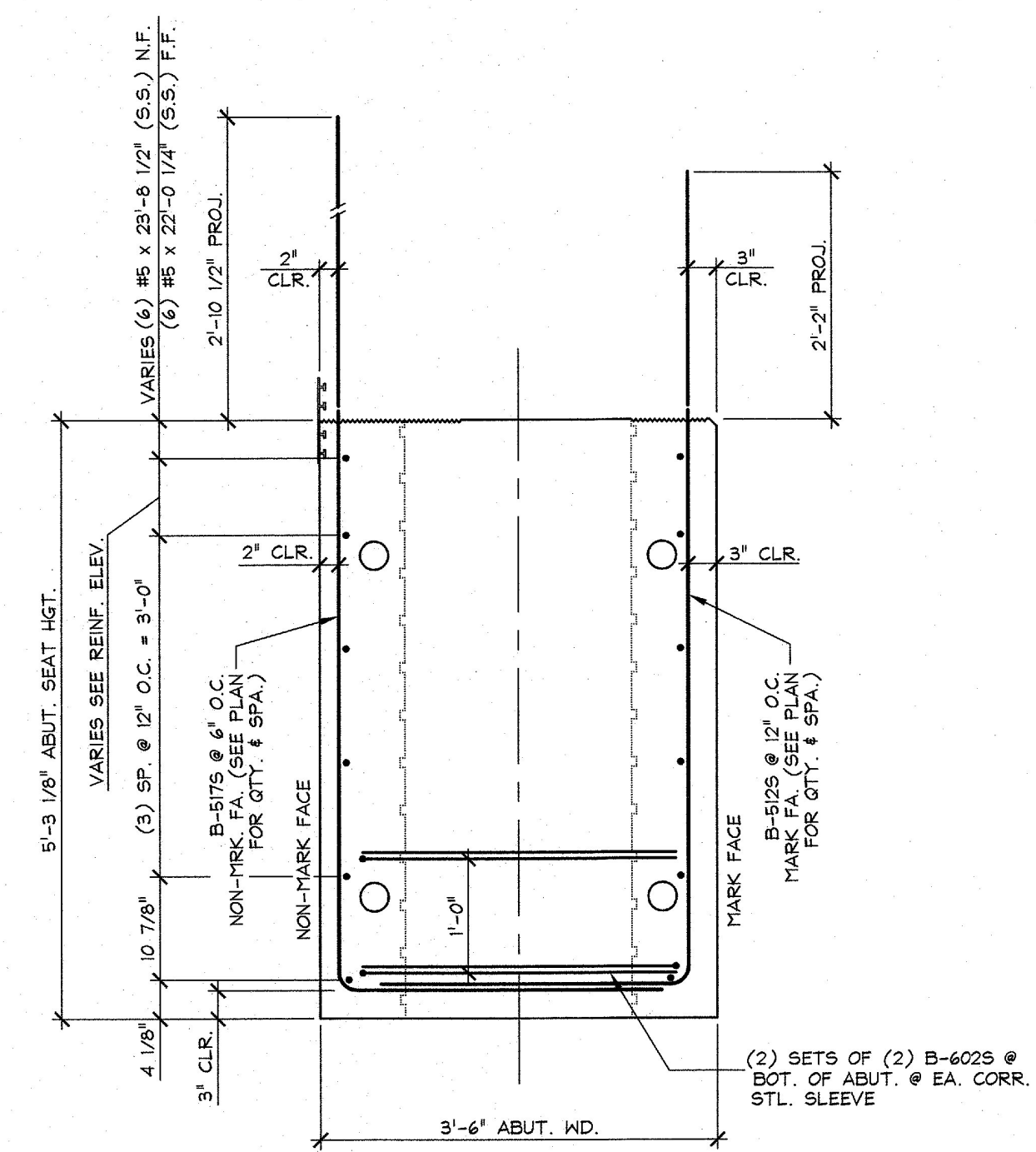


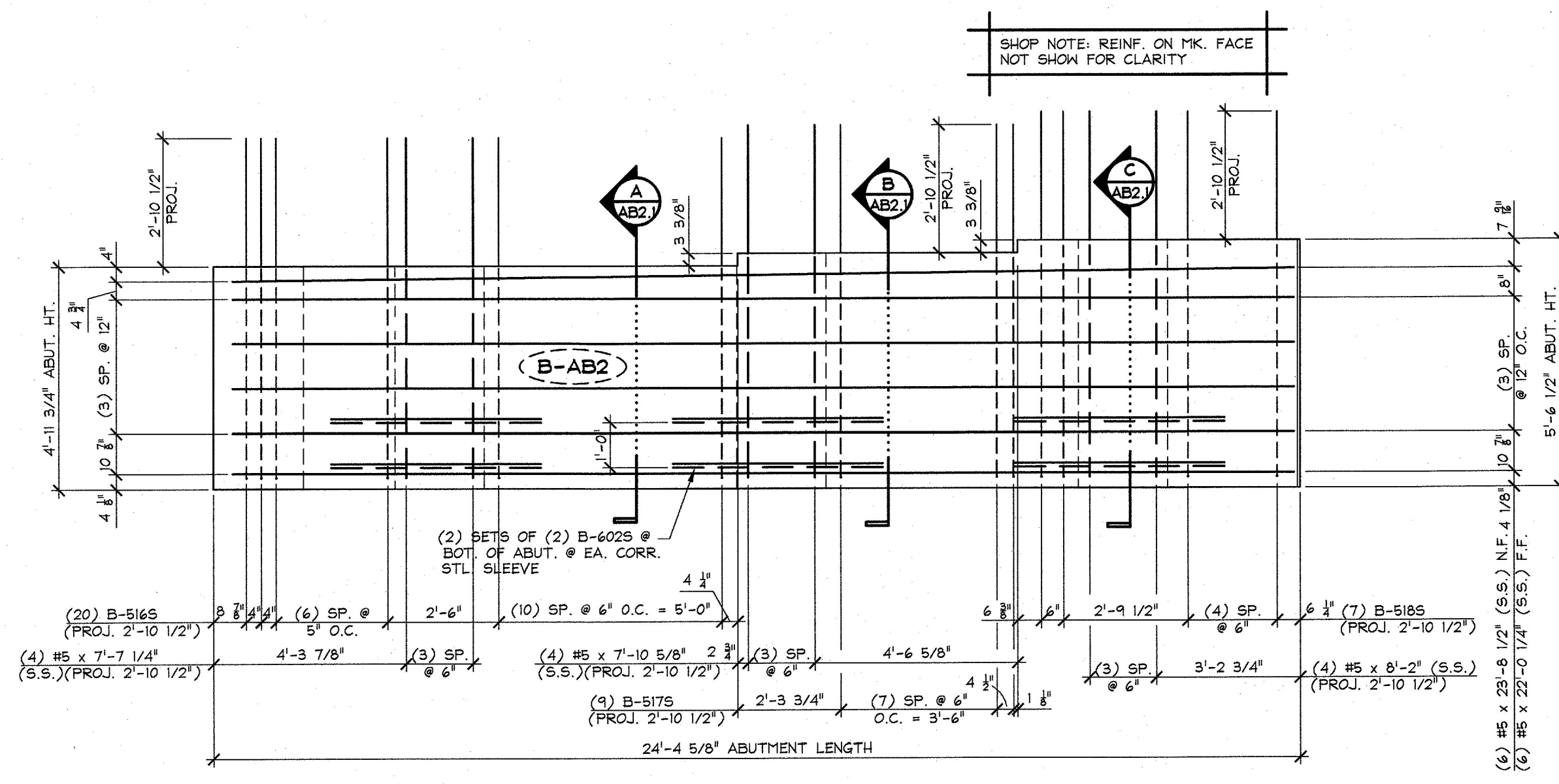
1 ABUTMENT PLAN VIEW IN FORM 'B-AB2'  
AB2.1 3/8" = 1'-0"



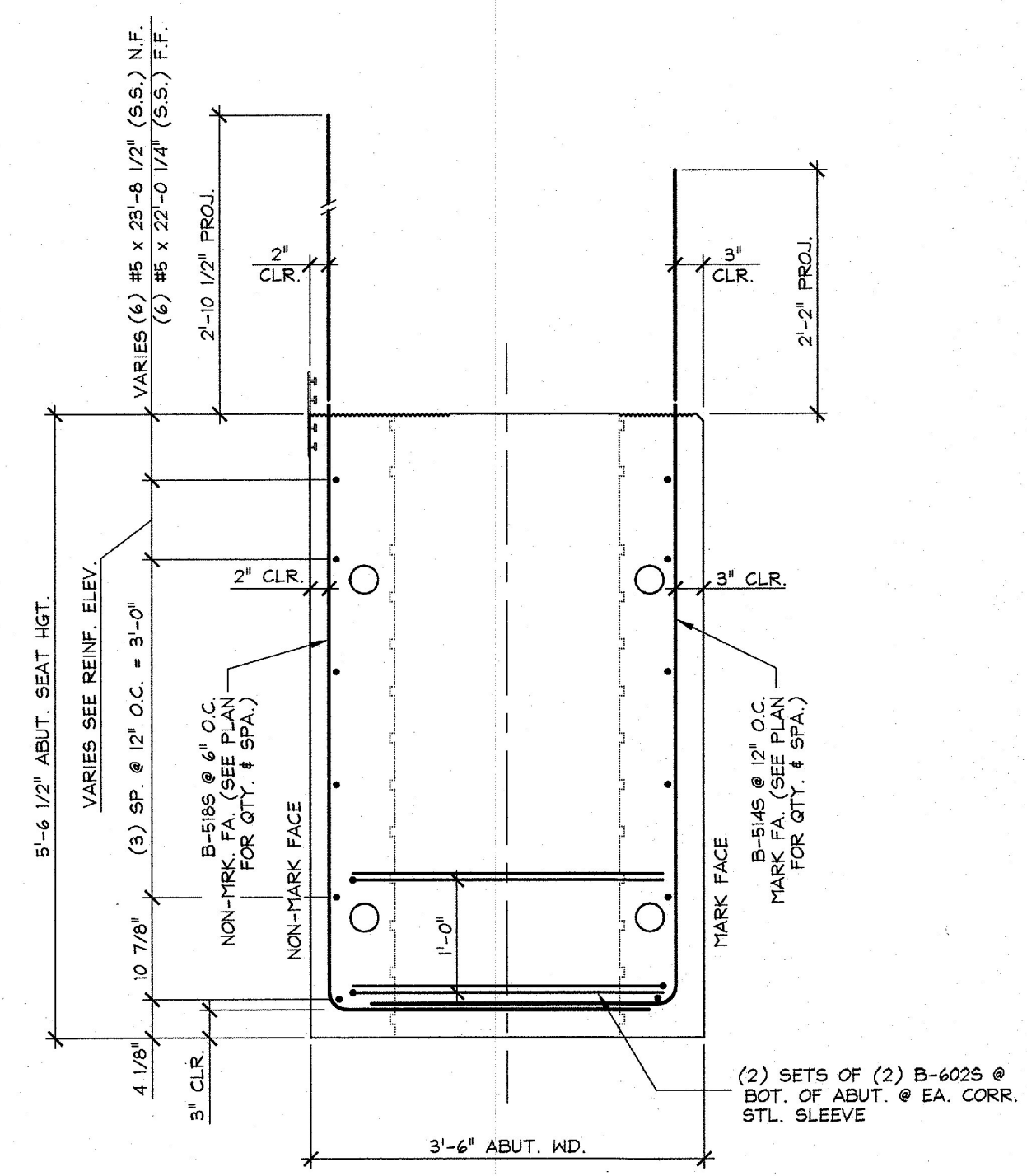
A REINFORCING SECTION  
AB2.1 3/4" = 1'-0"



B REINFORCING SECTION  
AB2.1 3/4" = 1'-0"



2 ABUTMENT REINF. ELEVATION - NON MARK FACE  
AB2.1 3/8" = 1'-0"



C REINFORCING SECTION  
AB2.1 3/4" = 1'-0"

MATERIAL LIST / ABUTMENT			
ITEM	MARK	DESCRIPTION	QTY.
1	B-5105	#5 BENT BAR (STAINLESS STEEL)	8
2	B-5115	#5 BENT BAR (STAINLESS STEEL)	1
3	B-5125	#5 BENT BAR (STAINLESS STEEL)	3
4	B-5135	#5 BENT BAR (STAINLESS STEEL)	2
5	B-5145	#5 BENT BAR (STAINLESS STEEL)	3
6	B-5155	#5 BENT BAR (STAINLESS STEEL)	1
7	B-5165	#5 BENT BAR (STAINLESS STEEL)	20
8	B-5175	#5 BENT BAR (STAINLESS STEEL)	9
9	B-5185	#5 BENT BAR (STAINLESS STEEL)	1
10	B-6025	#6 BENT BAR (STAINLESS STEEL)	12
11			
12			
13		#5 x 6'-10 3/4" (STAINLESS STEEL)	2
14		#5 x 7'-2 1/8" (STAINLESS STEEL)	2
15		#5 x 7'-5 1/2" (STAINLESS STEEL)	2
16		#5 x 7'-7 1/4" (STAINLESS STEEL)	4
17		#5 x 7'-10 5/8" (STAINLESS STEEL)	4
18		#5 x 8'-2" (STAINLESS STEEL)	4
19			
20		#5 x 22'-0 1/4" (STAINLESS STEEL)	6
21		#5 x 23'-8 1/2" (STAINLESS STEEL)	6
22			

Vermont Agency of Transportation  
**RECEIVED**  
CK'D BY \_\_\_\_\_ OK'D BY G. ROY  
March 14, 2017  
RESUBMIT NO Approved  
BY C. CARLSON DATE 03/15/2017

APPROVAL STAMP:

J.P. CARRARA & SONS INC.  
Precast & Prestress Manufacturer  
2484 CASE STR., MIDDLEBURY, VERMONT 05753 Phone: (802)388-6361 Fax: (802)388-9010

A.L. ST. ONGE  
CONTRACTOR  
MONTGOMERY, VERMONT

STATE OF VERMONT AGENCY OF TRANSPORTATION  
COUNTY OF ORANGE

TOWN OF BRADFORD  
VT 25B (RURAL MAJOR COLLECTOR)  
BRIDGE NO.: 1 PROJECT NO.: BF 0191 (29)

DATE: DEC. 21, 2016  
SCALE: NOTED  
CHKD: DFTM: T.D.  
JOB NO: 23506-016  
DWG. NO: AB2.1

PRECAST ABUTMENT 'B-AB2'  
REINFORCING DETAILS