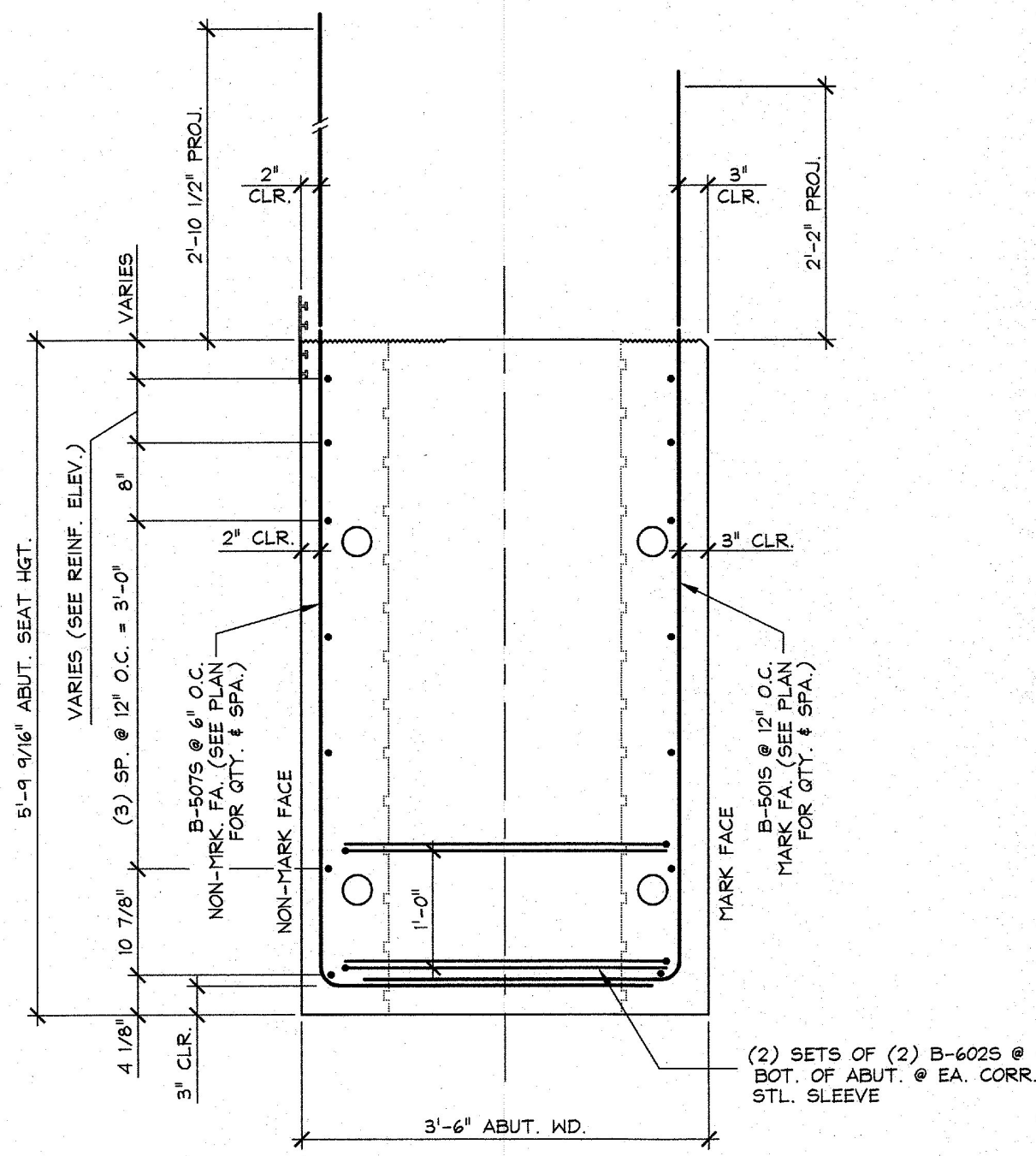
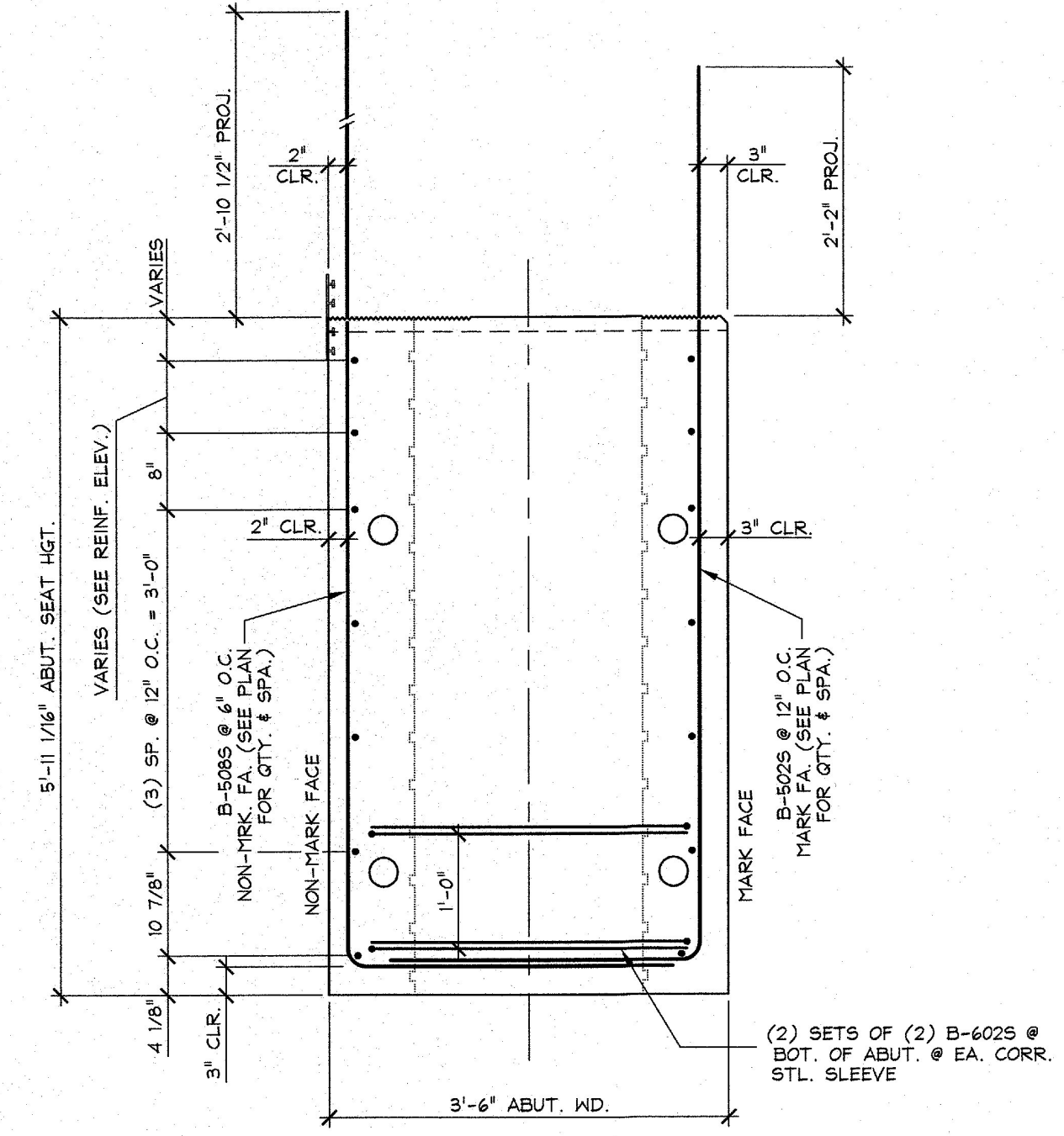


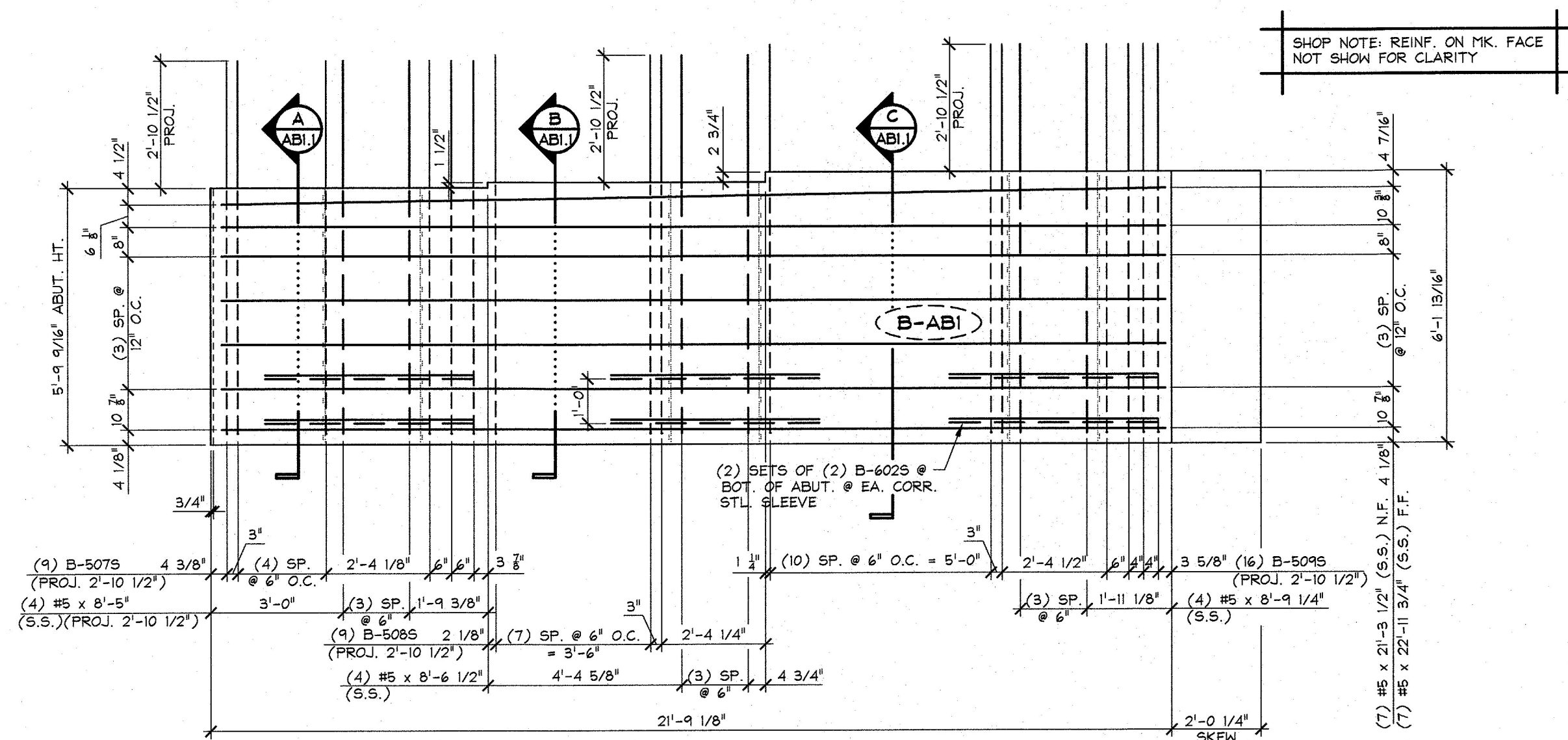
1 ABUTMENT PLAN VIEW IN FORM 'B-ABI'  
3/8" = 1'-0"



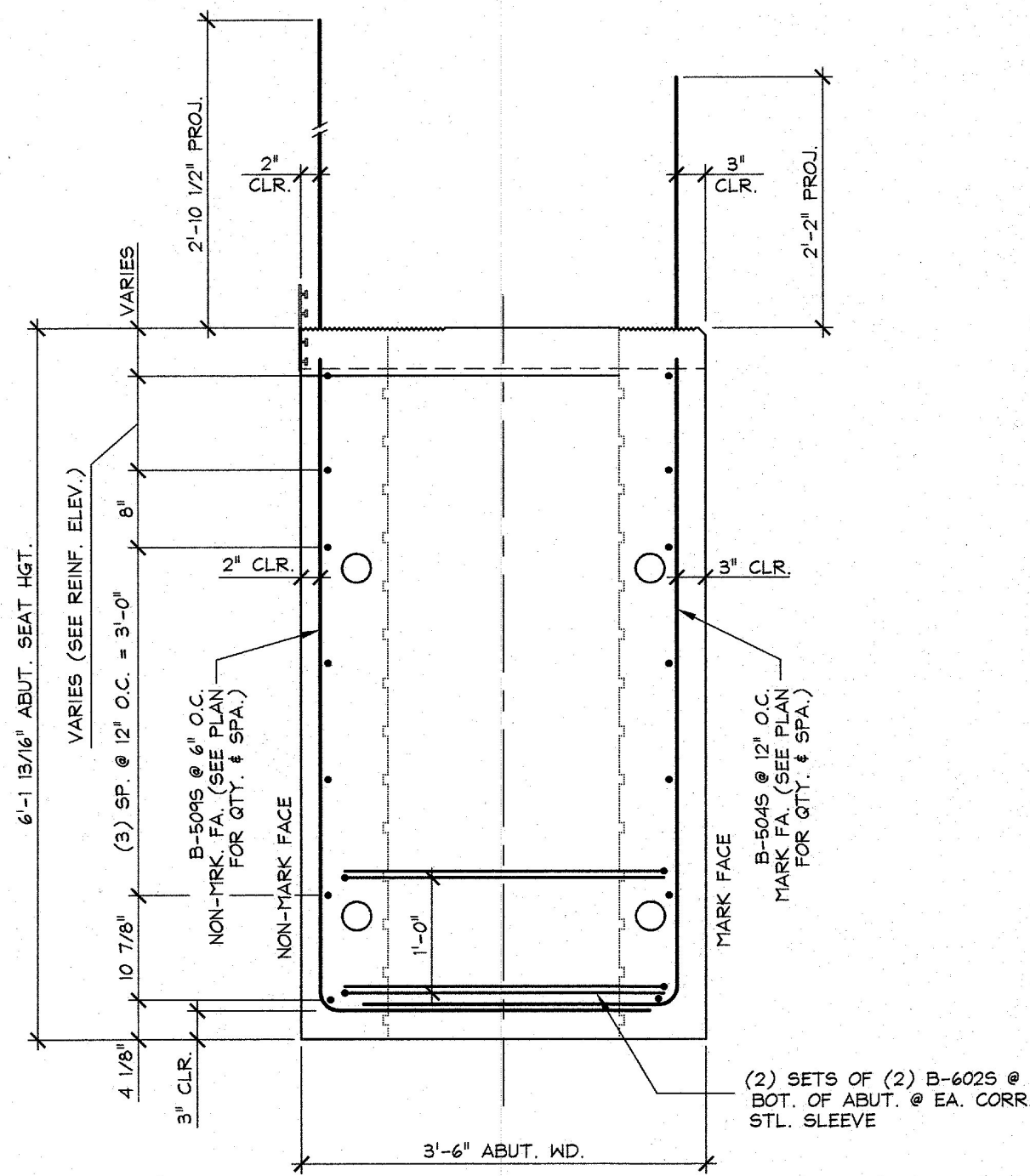
A REINFORCING SECTION  
3/4" = 1'-0"



B REINFORCING SECTION  
3/4" = 1'-0"



2 ABUTMENT REINF. ELEVATION - NON MARK FACE  
3/8" = 1'-0"



C REINFORCING SECTION  
3/4" = 1'-0"

| MARK: B-ABI              |        | QTY.: 1                            |      |
|--------------------------|--------|------------------------------------|------|
| MATERIAL LIST / ABUTMENT |        |                                    |      |
| ITEM                     | MARK   | DESCRIPTION                        | QTY. |
| 1                        | B-5015 | #5 BENT BAR (STAINLESS STEEL)      | 5    |
| 2                        | B-5025 | #5 BENT BAR (STAINLESS STEEL)      | 3    |
| 3                        | B-5035 | #5 BENT BAR (STAINLESS STEEL)      | 1    |
| 4                        | B-5045 | #5 BENT BAR (STAINLESS STEEL)      | 8    |
| 5                        | B-5055 | #5 BENT BAR (STAINLESS STEEL)      | 2    |
| 6                        | B-5075 | #5 BENT BAR (STAINLESS STEEL)      | 9    |
| 7                        | B-5085 | #5 BENT BAR (STAINLESS STEEL)      | 9    |
| 8                        | B-5095 | #5 BENT BAR (STAINLESS STEEL)      | 16   |
| 9                        | B-6025 | #6 BENT BAR (STAINLESS STEEL)      | 12   |
| 10                       |        |                                    |      |
| 11                       |        |                                    |      |
| 12                       |        |                                    |      |
| 13                       |        | #5 x 5'-3 1/2' (STAINLESS STEEL)   | 2    |
| 14                       |        | #5 x 7'-10' (STAINLESS STEEL)      | 2    |
| 15                       |        | #5 x 8'-0 3/4' (STAINLESS STEEL)   | 2    |
| 16                       |        | #5 x 8'-5' (STAINLESS STEEL)       | 4    |
| 17                       |        | #5 x 8'-6 1/2' (STAINLESS STEEL)   | 4    |
| 18                       |        | #5 x 8'-9 1/4' (STAINLESS STEEL)   | 4    |
| 19                       |        |                                    |      |
| 20                       |        | #5 x 21'-3 1/2' (STAINLESS STEEL)  | 7    |
| 21                       |        | #5 x 22'-11 3/4' (STAINLESS STEEL) | 7    |
| 22                       |        |                                    |      |

Vermont Agency of Transportation  
**RECEIVED**

CK'D BY \_\_\_\_\_ OK'D BY G. ROY

March 14, 2017

RESUBMIT NO Approved  
BY C. CARLSON DATE 03/15/2017

3/14/17 REVISED AS PER ENGINEERS COMM. T.D.  
2/24/17 REVISED AS PER ENGINEERS COMM. T.D.

|   |   |  |
|---|---|--|
| APPROVAL STAMP:   | J.P. CARRARA & SONS INC.<br>Precast & Prestress Manufacturer<br>2964 CASE STR., MIDDLEBURY, VERMONT 05753 Phone: (802)388-6361 Fax: (802)388-9010 | A.I. ST. ONGE<br>CONTRACTOR<br>MONTGOMERY, VERMONT |
| STATE OF VERMONT AGENCY OF TRANSPORTATION<br>COUNTY OF ORANGE                                 |   | DATE: DEC. 21, 2016                                |
| TOWN OF BRADFORD<br>VT 25B (RURAL MAJOR COLLECTOR)<br>BRIDGE NO.: 1 PROJECT NO.: BF 0191 (29) |   | SCALE: NOTED                                       |
| PRECAST ABUTMENT 'B-ABI'<br>REINFORCING DETAILS   |   | CHKD: _____ DFTM: T.D.<br>JOB NO: 23506-016        |
|   |   | DWG. NO: AB1.1                                     |