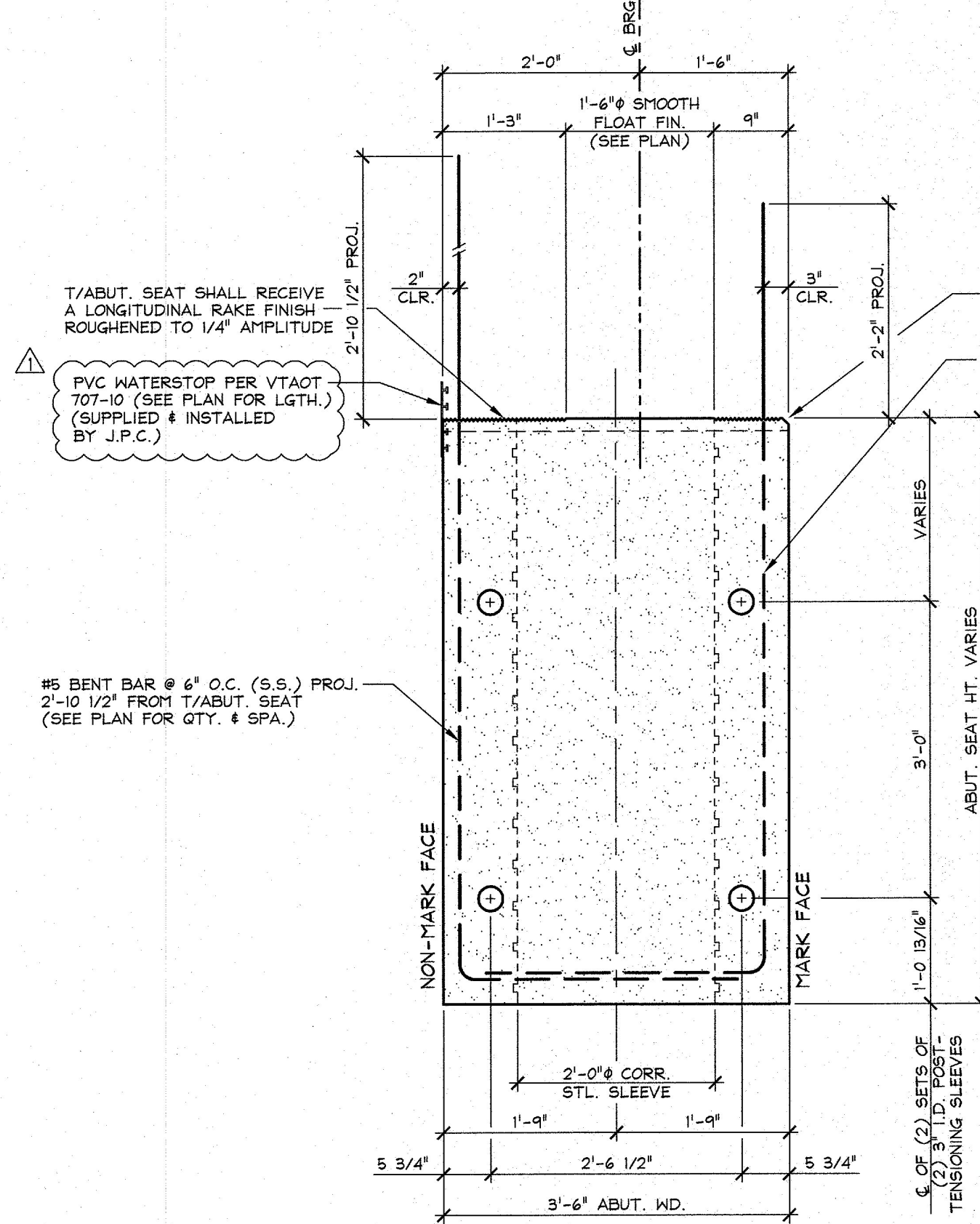
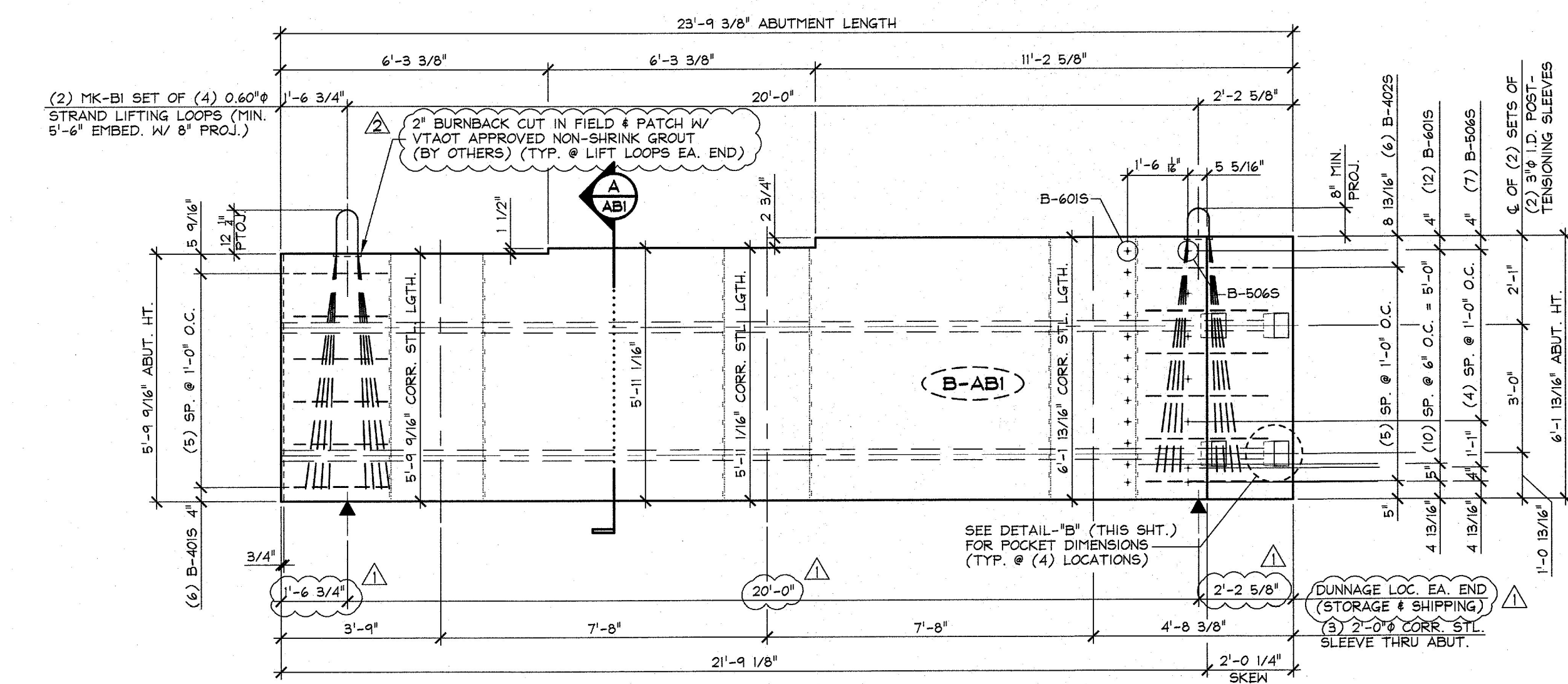
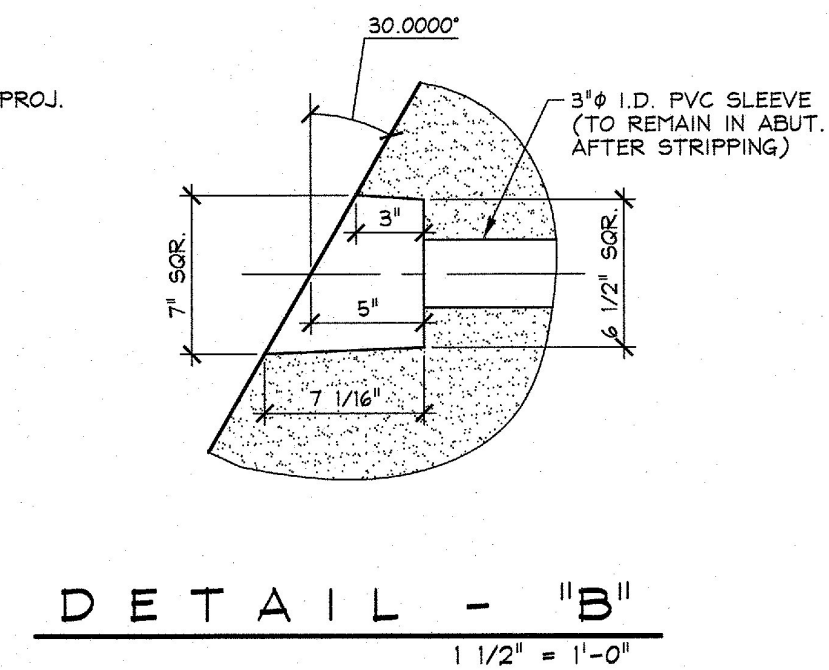


1 ABUTMENT PLAN VIEW IN FORM 'B-ABI'
3/8" = 1'-0"



A DIMENSIONAL SECTION
3/4" = 1'-0"



2 ABUTMENT ELEVATION - NON-MARK FACE
PROJECTING REINFORCING NOT SHOWN FOR CLARITY
3/8" = 1'-0"

SHOP NOTE:
SEE DRAWING NO. 'ABI1' FOR ABUTMENT REINFORCING

SHOP NOTE:
28-DAY STRENGTH = 5,000 PSI
HANDLING STRENGTH = 3,500 PSI
MIX #445M5CC

MATERIAL LIST / ABUTMENT			
ITEM	MARK	DESCRIPTION	QTY.
1	B-401S	#4 BENT BAR (STAINLESS STEEL)	6
2	B-402S	#4 BENT BAR (STAINLESS STEEL)	6
3			
4	B-504S	#5 BENT BAR (STAINLESS STEEL)	7
5	B-601S	#6 BENT BAR (STAINLESS STEEL)	12
6			
7		P.V.C. WATERSTOP PER VTAOT 707-10	19.45 LF
8			
9		2'-0" x 5'-9 9/16" CORRUGATED STEEL SLEEVE	1
10		2'-0" x 5'-11 1/16" CORRUGATED STEEL SLEEVE	1
11		2'-0" x 6'-1 13/16" CORRUGATED STEEL SLEEVE	1
12			
13			
14	MK-BI	SET OF (4) 0.60" STRAND LIFTING LOOPS x 6'-2" LONG	2
15			

Vermont Agency of Transportation
RECEIVED
CK'D BY _____ OK'D BY G. ROY
March 14, 2017
RESUBMIT NO _____ Approved
BY C. CARLSON DATE 03/15/2017
3/14/17 REVISED AS PER ENGINEERS COM. T.D.
2/24/17 REVISED AS PER ENGINEERS COM. T.D.

APPROVAL STAMP:	J.P. CARRARA & SONS INC. Precast & Prestress Manufacturer 2464 ONE ST., MIDDLEBURY, VERMONT 05753 Phone: (802)388-6361 Fax: (802)388-9010	A.L. ST. ONGE CONTRACTOR MONTGOMERY, VERMONT
	STATE OF VERMONT AGENCY OF TRANSPORTATION COUNTY OF ORANGE	DATE: DEC. 21, 2016 SCALE: NOTED
	TOWN OF BRADFORD VT 25B (RURAL MAJOR COLLECTOR) BRIDGE NO.: 1 PROJECT NO.: BF 0191 (29)	CHKD: _____ DFTM: T.D. JOB NO: 23506-016
	PRECAST ABUTMENT 'W-ABI' DIMENSIONAL DETAILS	DWG. NO: ABI