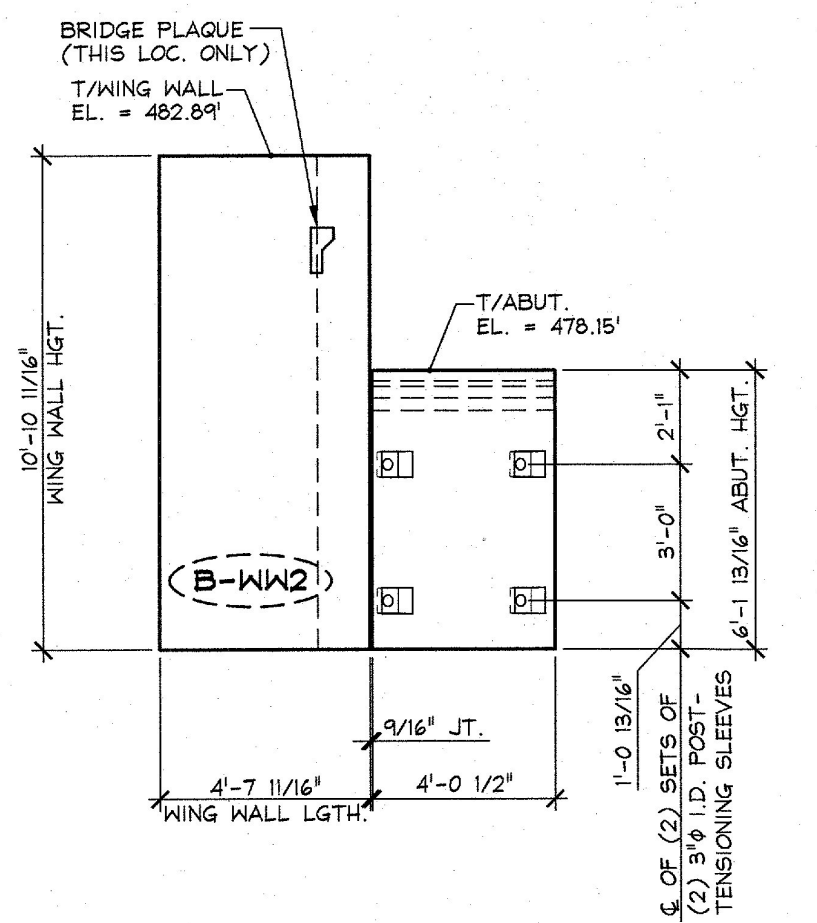
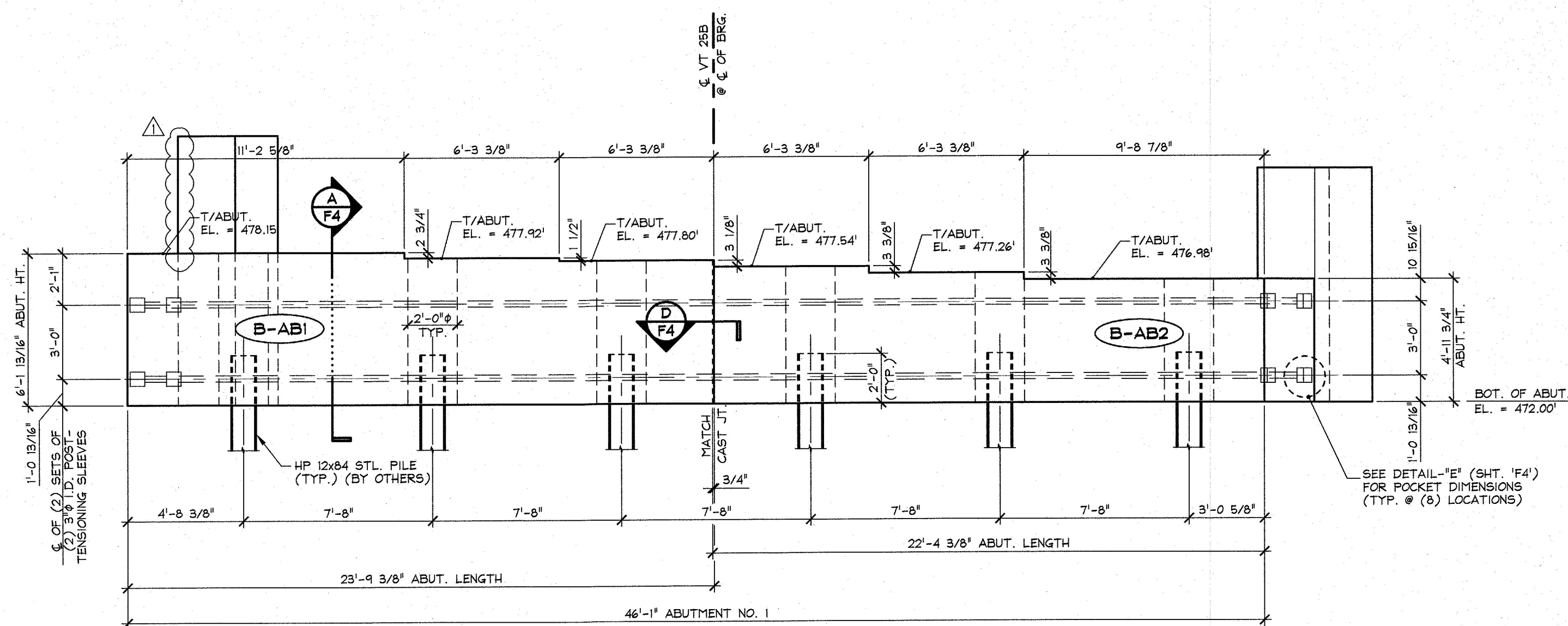


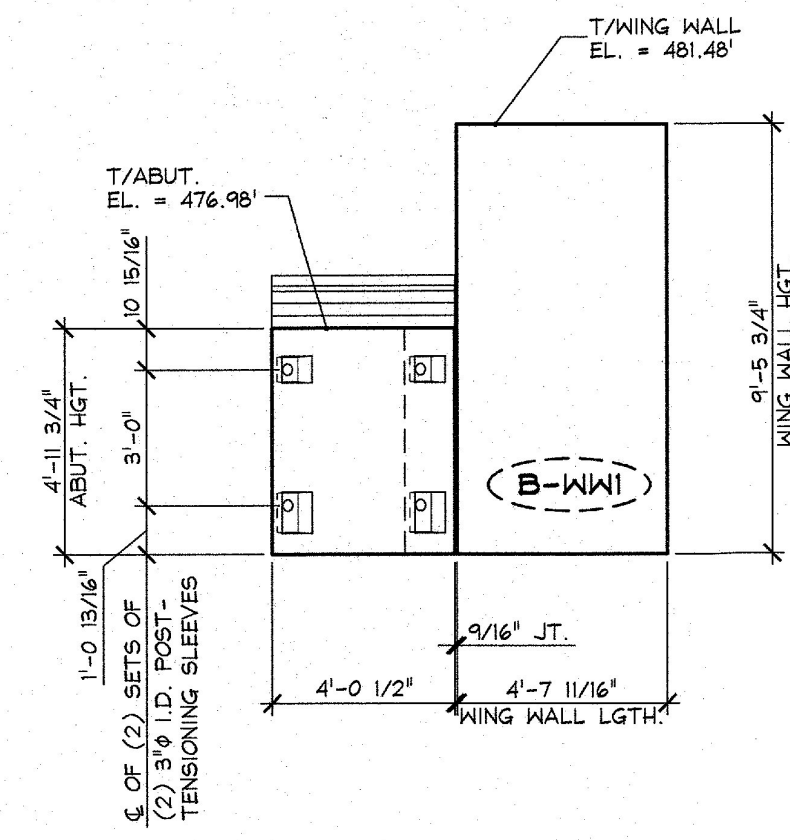
1 PRECAST ABUTMENT NO. 1 & WING WALL LAYOUT
 F2 1/4" = 1'-0"



2 WING WALL ELEVATION
 F2 "B-WW2" 1/4" = 1'-0"



3 ABUTMENT NO. 1 ELEVATION
 F2 1/4" = 1'-0"



4 WING WALL ELEVATION
 F2 "B-WW1" 1/4" = 1'-0"

Vermont Agency of Transportation
RECEIVED
 CK'D BY _____ OK'D BY G. ROY
 March 14, 2017
 RESUBMIT NO Approved
 BY C. CARLSON DATE 03/15/2017

| | | | |
|-----------------|-------------------------------------------------------------------------------------------------------------------------------------------------|--|----------------------------------------------------|
| APPROVAL STAMP: | J.P. CARRARA & SONS INC. Precast & Prestress Manufacturer 244 OSE STR. WOODSBURY, VERMONT 05753 Phone: (802) 388-6361 Fax: (802) 388-9010 | | A.L. ST. ONGE CONTRACTOR MONTGOMERY, VERMONT |
| | STATE OF VERMONT AGENCY OF TRANSPORTATION COUNTY OF ORANGE | | DATE: DEC. 21, 2016 SCALE: NOTED |
| | TOWN OF BRADFORD VT 255B (RURAL MAJOR COLLECTOR) BRIDGE NO.: 1 PROJECT NO.: BF 0191 (2A) | | CHKD: _____ DFTM: T.D. JOB NO: 23506-016 |
| | PRECAST ABUTMENT NO. 1 & WING WALL LAYOUT & ELEVATIONS | | DWG. NO: F2 |