

**CONSTRUCT GRAVEL DRIVE**

VT 25B STA 11+38.1 RT  
TH 51 STA 21+15.9 LT  
TH 51 STA 21+28.5 RT

**CONSTRUCT 4' PAVED APRON**

VT 25B STA 11+06.8 LT - VT 25B STA 11+72.7 LT  
TH 51 STA 20+95.3 LT - TH 51 STA 21+35.7 LT  
TH 51 STA 21+04.7 RT - TH 51 STA 21+52.8 RT

**CONSTRUCT 5' PAVED APRON**

VT 25B STA 11+04.2 RT - VT 25B STA 11+87.5 RT

**BRIDGE RAILING, GALVANIZED 3 RAIL BOX BEAM**

VT 25B STA 13+80.3 LT - VT 25B STA 15+28.4 LT  
VT 25B STA 13+98.9 RT - VT 25B STA 15+44.0 RT

**RELOCATE MAILBOX, SINGLE SUPPORT**

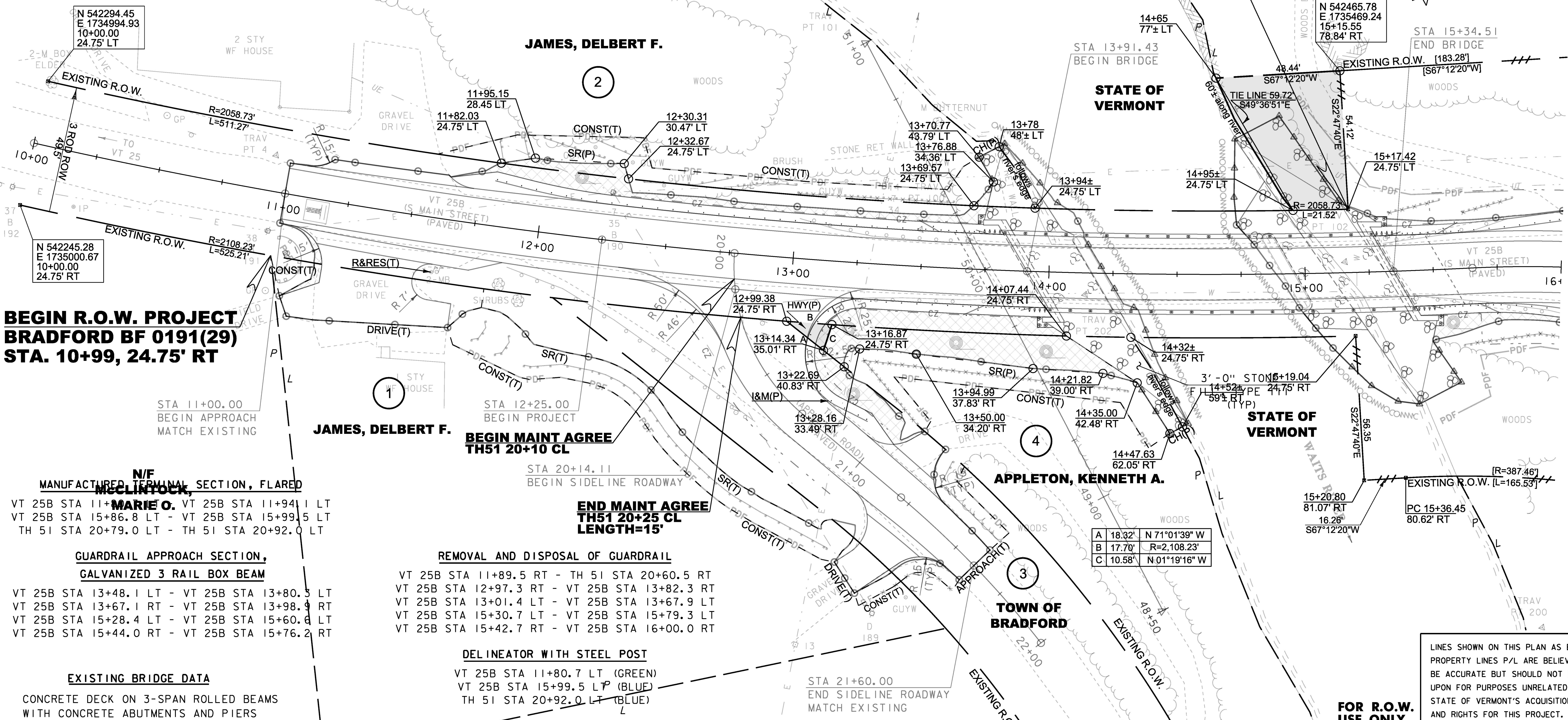
FROM VT 25B STA 11+60.9 RT TO VT 25B STA 11+60.9 RT  
FROM VT 25B STA 11+62.9 RT TO VT 25B STA 11+62.9 RT

**BOX BEAM GUARDRAIL**

VT 25B STA 11+94.1 LT - VT 25B STA 13+48.1 LT  
TH 51 STA 20+79.0 LT - VT 25B STA 13+67.1 RT  
VT 25B STA 15+60.6 LT - VT 25B STA 15+86.8 LT  
VT 25B STA 15+76.2 RT - VT 25B STA 16+00.0 RT

**END R.O.W. PROJECT  
BRADFORD BF 0191(29)  
STA. 15+17.42, 24.75' LT**

**COOKE, RICHARD J.  
& JOAN S.**



**BEGIN R.O.W. PROJECT  
BRADFORD BF 0191(29)  
STA. 10+99, 24.75' RT**

**N/F  
MANUFACTURED TERMINAL SECTION, FLARED  
MCCLINTOCK,  
MARIE O.**  
VT 25B STA 11+88.1 LT - VT 25B STA 11+94.1 LT  
VT 25B STA 15+86.8 LT - VT 25B STA 15+99.5 LT  
TH 51 STA 20+79.0 LT - TH 51 STA 20+92.0 LT

**GUARDRAIL APPROACH SECTION,  
GALVANIZED 3 RAIL BOX BEAM**  
VT 25B STA 13+48.1 LT - VT 25B STA 13+80.3 LT  
VT 25B STA 13+67.1 RT - VT 25B STA 13+98.9 RT  
VT 25B STA 15+28.4 LT - VT 25B STA 15+60.6 LT  
VT 25B STA 15+44.0 RT - VT 25B STA 15+76.2 RT

**EXISTING BRIDGE DATA**  
CONCRETE DECK ON 3-SPAN ROLLED BEAMS  
WITH CONCRETE ABUTMENTS AND PIERS  
BUILT 1933  
OVERALL LENGTH: 160'  
SPAN 1: 43'; SPAN 2: 74'; SPAN 3: 43'  
FASCIA TO FASCIA WIDTH: 23.3'  
ROADWAY WIDTH: 24'

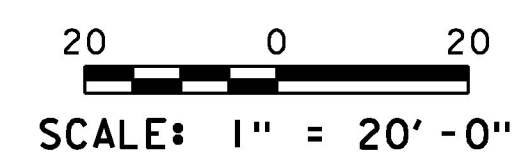
**JAMES, DELBERT F.  
BEGIN MAINT AGREE  
TH51 20+10 CL**

**END MAINT AGREE  
TH51 20+25 CL  
LENGTH=15'**

**REMOVAL AND DISPOSAL OF GUARDRAIL**  
VT 25B STA 11+89.5 RT - TH 51 STA 20+60.5 RT  
VT 25B STA 12+97.3 RT - VT 25B STA 13+82.3 RT  
VT 25B STA 13+01.4 LT - VT 25B STA 13+67.9 LT  
VT 25B STA 15+30.7 LT - VT 25B STA 15+79.3 LT  
VT 25B STA 15+42.7 RT - VT 25B STA 16+00.0 RT

**DELINEATOR WITH STEEL POST**  
VT 25B STA 11+80.7 LT (GREEN)  
VT 25B STA 15+99.5 L/P (BLUE)  
TH 51 STA 20+92.0 L/P (BLUE)

**N/F  
APPLETON, KENNETH A.**



A	18.32'	N 71°01'39" W
B	17.70'	R=2,108.23'
C	10.58'	N 01°19'16" W

LINES SHOWN ON THIS PLAN AS EXISTING  
PROPERTY LINES P/L ARE BELIEVED TO  
BE ACCURATE BUT SHOULD NOT BE RELIED  
UPON FOR PURPOSES UNRELATED TO THE  
STATE OF VERMONT'S ACQUISITION OF LAND  
AND RIGHTS FOR THIS PROJECT.

PROJECT NAME:	BRADFORD
PROJECT NUMBER:	BF 0191(29)
FILE NAME:	r13c054layout.dgn
PROJECT LEADER:	C. CARLSON
DESIGNED BY:	G. ROY
R.O.W. LAYOUT SHEET 1 OF 1	
PLOT DATE:	15-SEP-2016
DRAWN BY:	T. POLK
CHECKED BY:	R. CLOUTIER
SHEET	71 OF 71