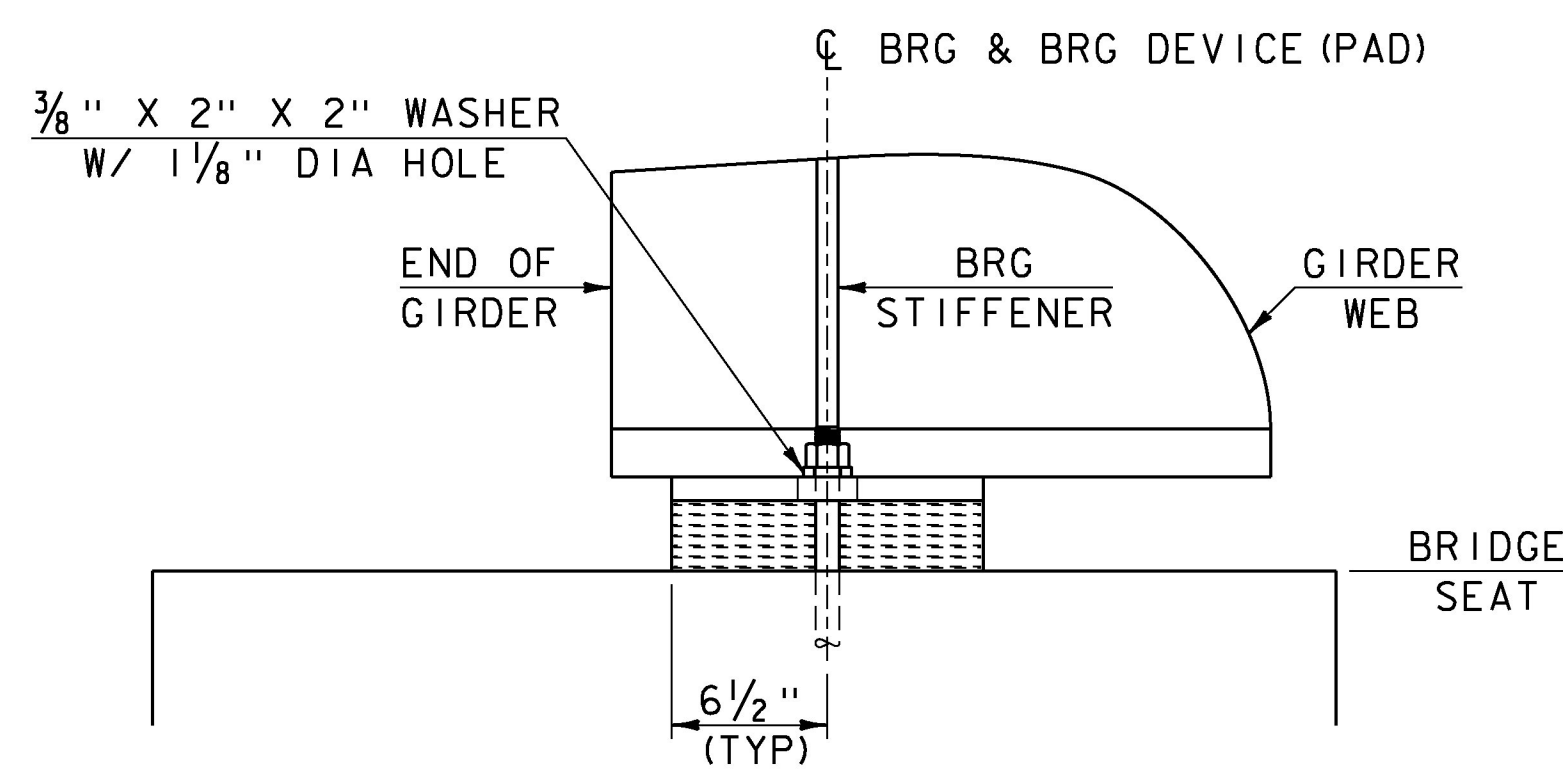
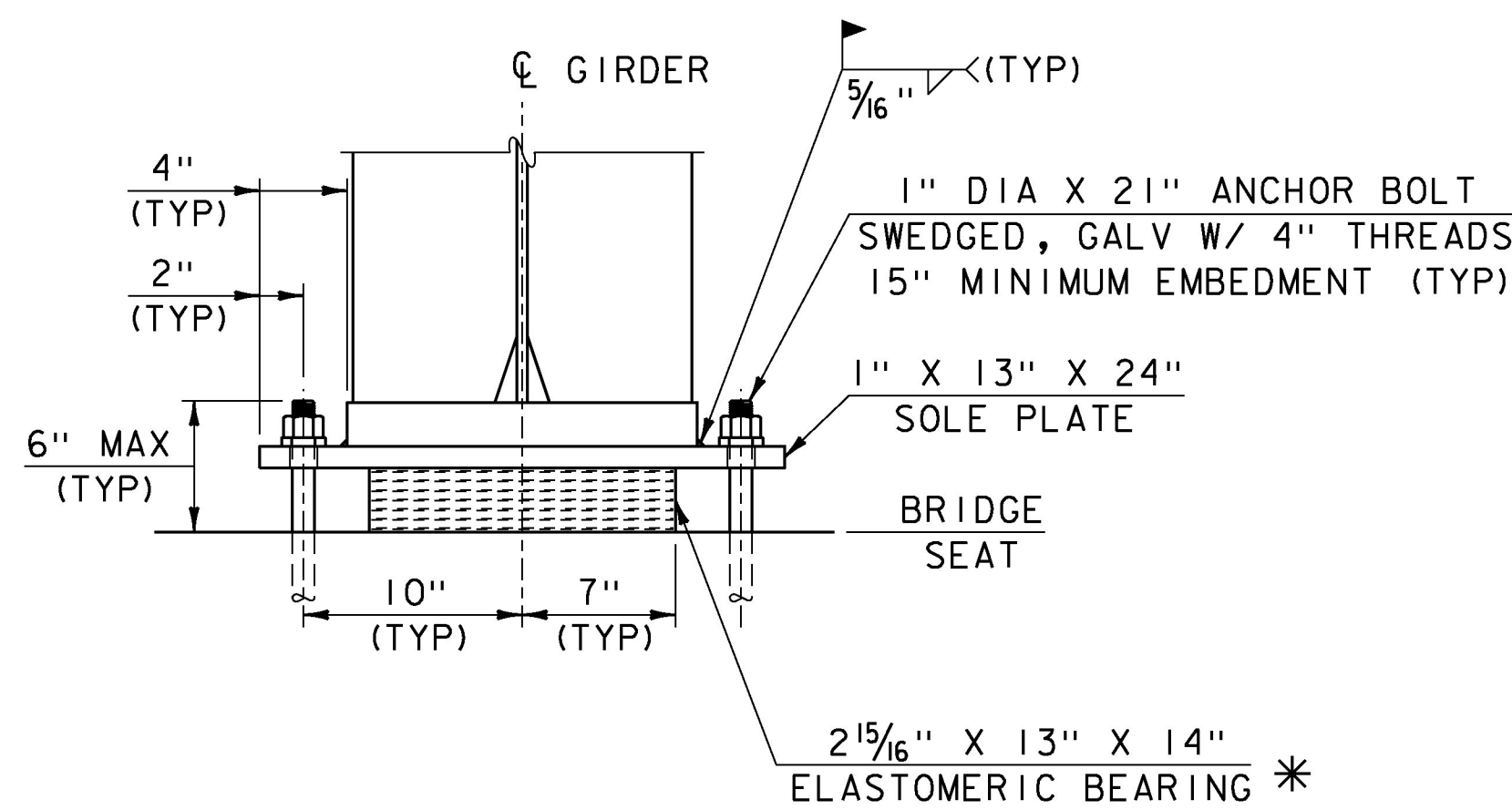


PLAN VIEW
SCALE: 1/2" = 1'-0"



SIDE VIEW
SCALE: 1/2" = 1'-0"



FRONT VIEW
SCALE: 1/2" = 1'-0"

ANCHOR BOLT OFFSET TABLE

ABUTMENT	"A"	"B"
1	8 1/2"	5 5/16"
2	8 13/16"	4 11/16"

* 2 - 1/8" EXTERIOR LAYERS OF ELASTOMER
6 - 3/8" INTERIOR LAYERS OF ELASTOMER
7 - 1/16" STEEL REINFORCING PLATES

BEARING NOTES:

- BEARINGS WILL BE PAID FOR UNDER ITEM 531.17 "BEARING DEVICE ASSEMBLY, STEEL REINFORCED ELASTOMERIC PAD" AND SHALL CONFORM TO APPLICABLE SUBSECTIONS OF SECTION 531 AND 731.
- FABRICATION DRAWINGS, INCLUDING ASSOCIATED WELDING PROCEDURES, SHALL BE SUBMITTED CONFORMING TO SUBSECTION 531.03.
- DESIGN CRITERIA:
 - DEAD LOAD ROTATION: 0.022 RADIAN
 - DEAD LOAD (UNFACTORED): 84 KIPS
 - ELASTOMER SHEAR MODULUS: 95 PSI
- ALL STEEL IN BEARINGS DEVICES SHALL BE AASHTO M 270M/M 270 GRADE 36, UNLESS OTHERWISE NOTED.
- ALL REINFORCEMENT BETWEEN LAYERS OF ELASTOMER SHALL BE STEEL MEETING THE REQUIREMENTS OF SUBSECTION 714.02. ALL INTERNAL STEEL SHEETS SHALL BE SAND BLASTED AND FREE OF COATINGS, RUST AND MILL SCALE. THE SHEETS SHALL BE FREE OF SHARP EDGES AND BURRS.
- STEEL REINFORCED ELASTOMERIC BEARINGS SHALL HAVE A MINIMUM 1/8" EDGE SEAL OF ELASTOMER INTEGRAL WITH BEARING OVER ALL INTERNAL SHEETS.
- ALL BEARING DEVICES SHALL BE GALVANIZED OR METALIZED AS PER SUBSECTIONS 506.14 AND 531.04 (b). IF THE BEARING DEVICES ARE METALIZED, THEY SHALL BE SEALED WITH AN APPROVED SEALER AS SPECIFIED IN SUBSECTION 531.04 (b). ALL AREAS OF GALVANIZING OR METALIZING DAMAGED BY FIELD WELDING OR HANDLING SHALL BE REPAIRED IN CONFORMANCE WITH SUBSECTION 726.08.
- THE CONCRETE SURFACE UNDER THE BEARING DEVICES SHALL BE LEVEL.
- ANCHOR BOLTS SHALL HAVE A MINIMUM 15 INCHES EMBEDMENT INTO THE CONCRETE AND SHALL CONFORM TO SUBSECTION 714.08.

PROJECT NAME: BRADFORD	PLOT DATE: 02-NOV-2016
PROJECT NUMBER: BF 0191 (29)	DRAWN BY: G. ROY
FILE NAME: sl3c054sup.dgn	CHECKED BY: M. EVANS-MONGEON
PROJECT LEADER: C. CARLSON	SHEET 33 OF 71
DESIGNED BY: M. EVANS-MONGEON	
BEARING DETAILS	