

GPS CONTROL POINTS

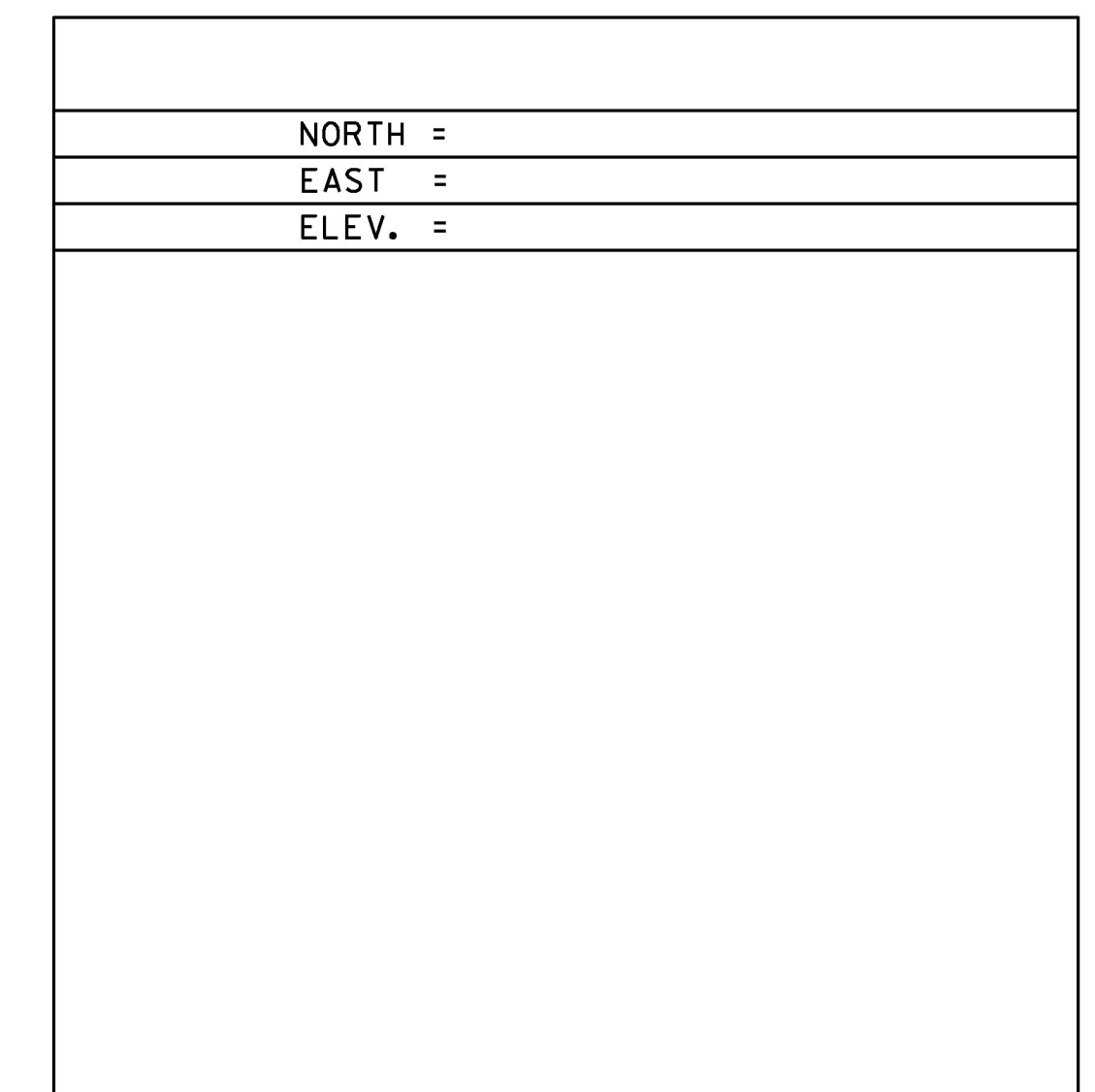
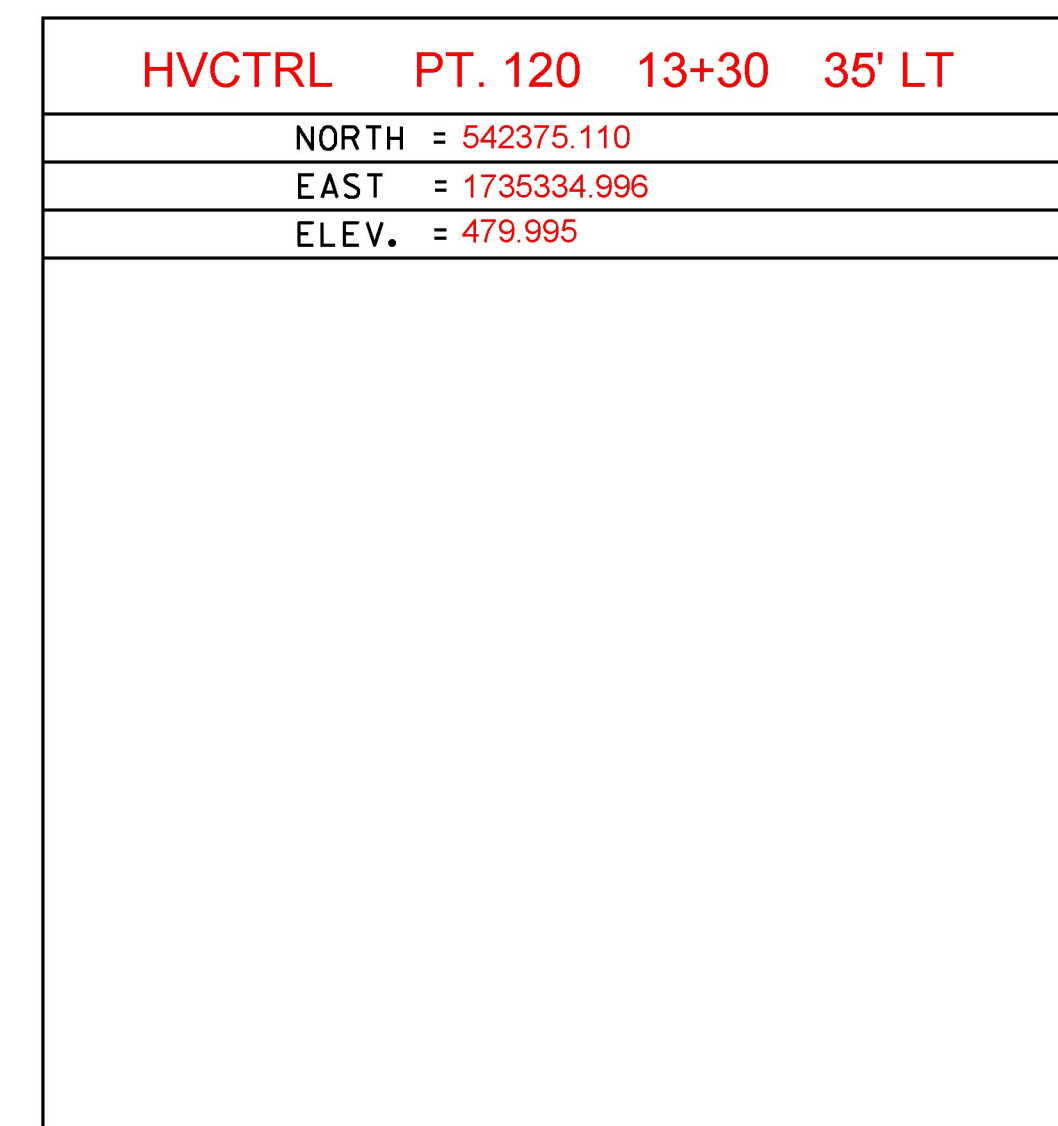
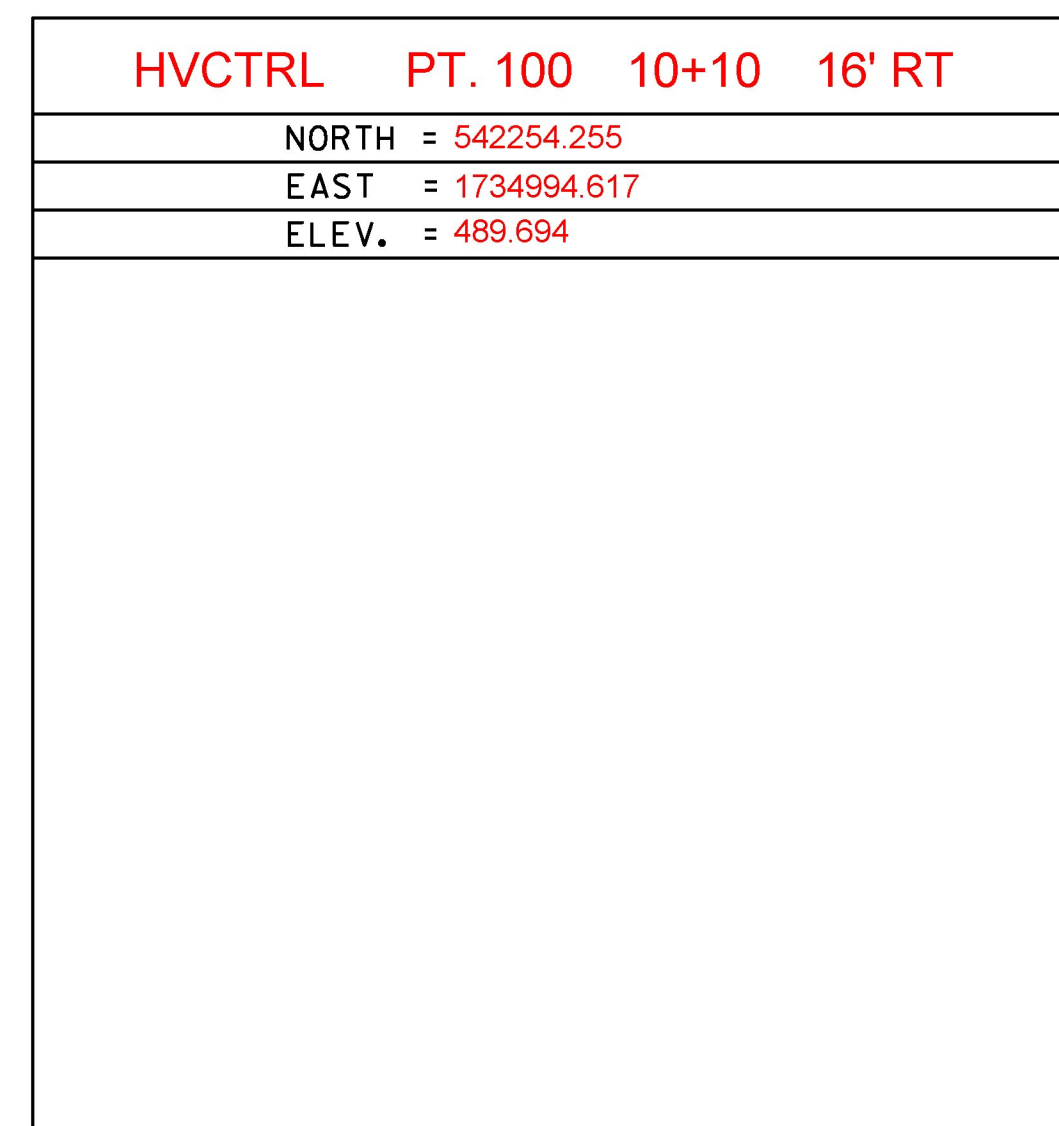
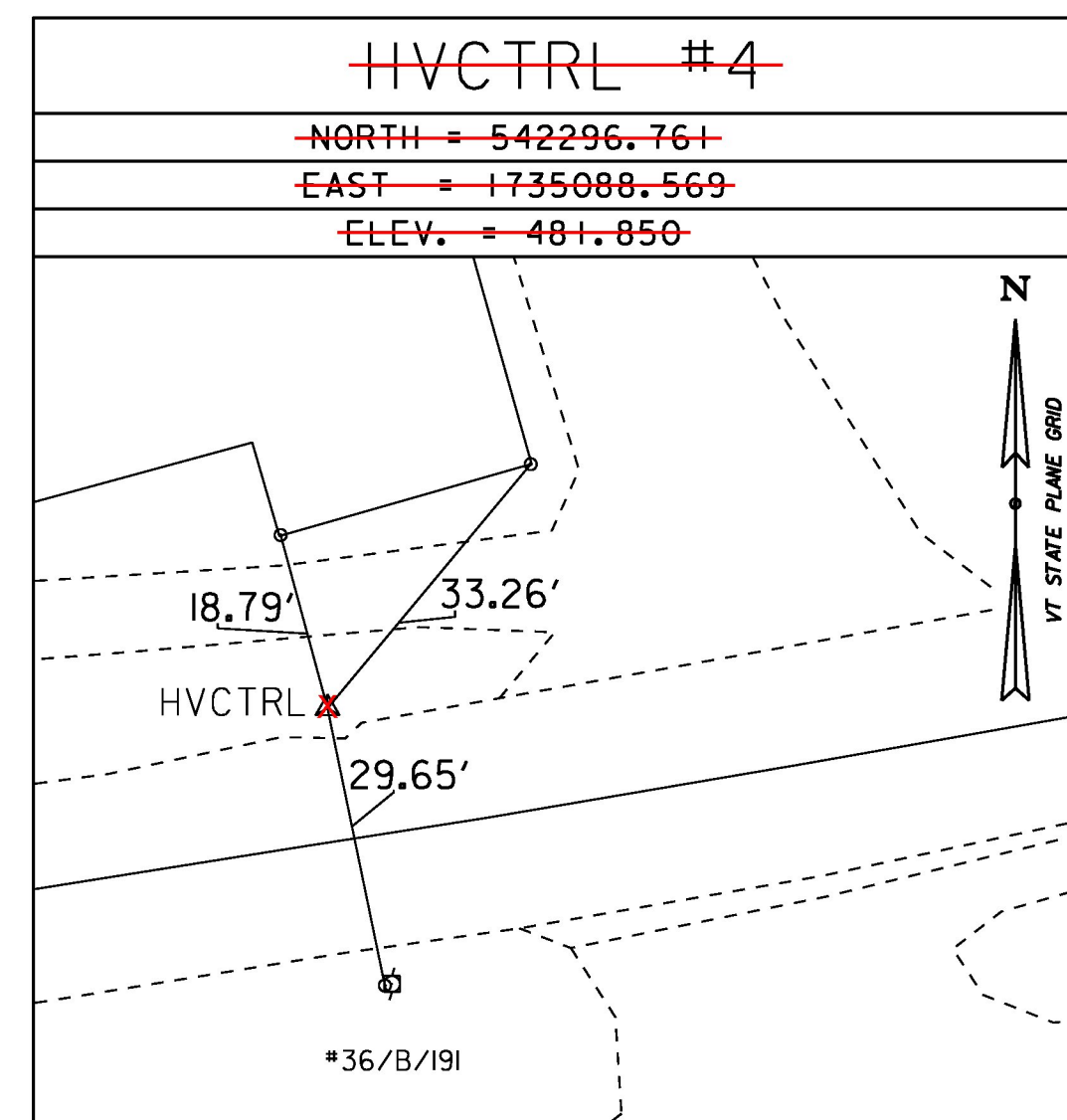
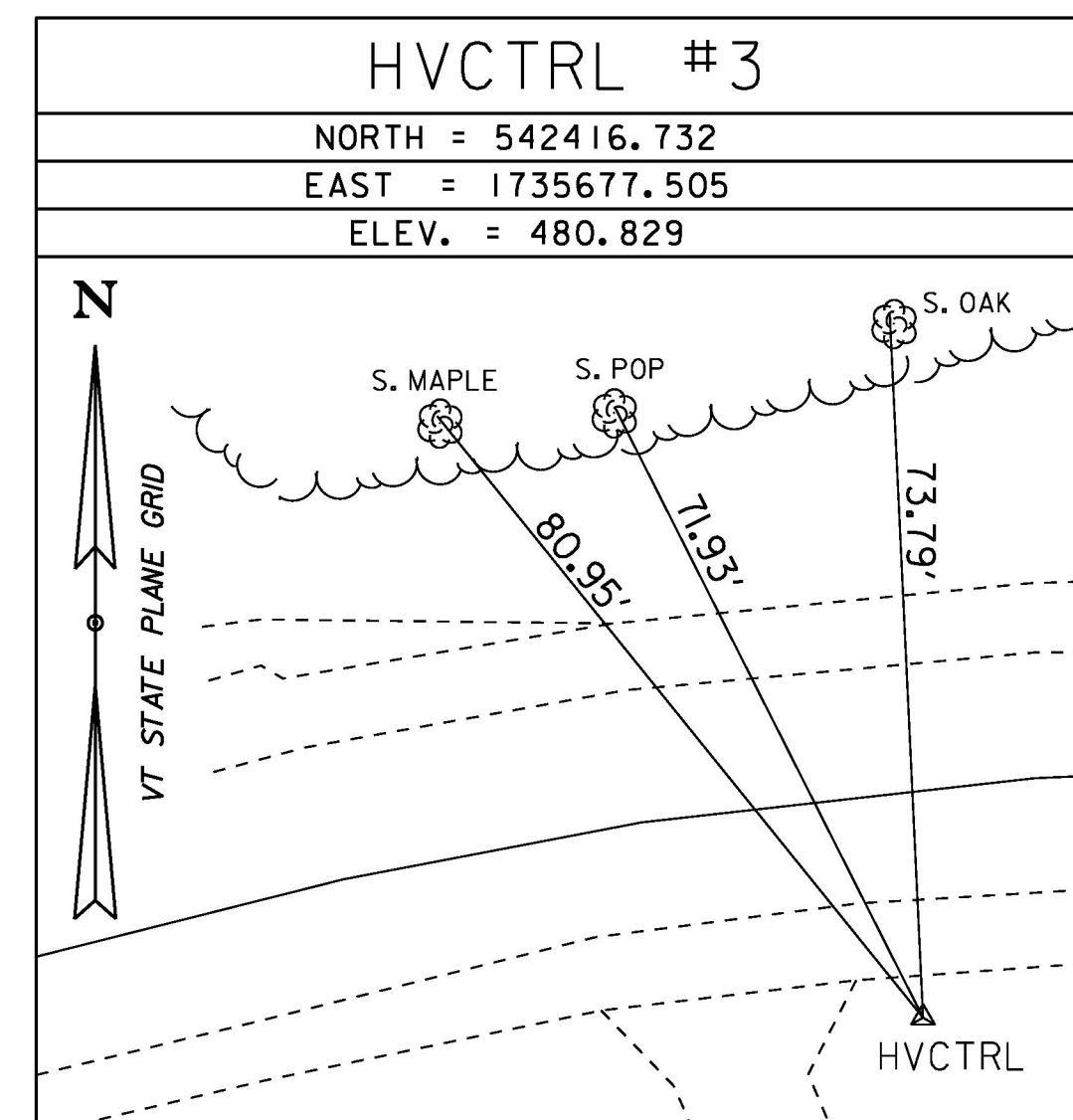
HVCTRL #1
 BRADFORD 191
 NORTH = 541211.490
 EAST = 1738526.733
 ELEV. = 487.180

DESCRIBED BY NATIONAL GEODETIC SURVEY 1992
 THE STATION IS LOCATED ABOUT 8.85 KM (5.50 MI) NORTH-NORTHEAST OF FAIRLEE, 3.20 KM (2.00 MI) WEST OF PIERMONT NH, 1.3 KM (0.80 MI) SOUTH OF BRADFORD. OWNERSHIP--STATE OF VERMONT. TO REACH FROM THE INTERSTATE HIGHWAY 91 NORTHBOUND BRIDGE OVER STATE ROUTE 25, GO EAST ALONG STATE ROUTE 25 FOR 0.15 MI (0.24 KM) TO A PARK AND RIDE LOT ON THE NORTH SIDE OF THE ROAD AND MARK SITE AT THE EAST END OF THE LOT. STATION IS A PUNCH MARK ON THE TOP OF 5/16 INCH STAINLESS STEEL ROD UNDER ACSESS COVER. LOCATED 72 FT (21.9 M) NORTH OF THE CENTERLINE OF ROUTE 25, 32.5 FT (9.9 M) WEST OF THE EAST END OF A BOARD FENCE, 68.5 FT (20.9 M) EAST OF POLE NUMBER 5/14, 140 FT (42.7 M) NORTHEAST OF THE EAST END OF A TRAFFIC ISLAND, 1 FT (0.3 M) SOUTH OF A FIBERGLASS WITNESS POST IN THE EAST-WEST BOARD FENCE.

HVCTRL #2
 BRADFORD 191 AZ MK
 NORTH = 541323.232
 EAST = 1737142.362
 ELEV. = 488.290

GENERAL LOCATION, BRADFORD, VT.
 THE MARK IS LOCATED AT THE NORTH END OF A GRASS TRIANGLE FORMED BY THE I-91 SOUTHBOUND LANE, VT ROUTE 25, AND THE I-91 SOUTHBOUND EXIT RAMP AT EXIT 16 IN BRADFORD. IT IS ABOUT 100 M (328.1 FT) NORTH OF THE NORTH END OF THE I-91 SOUTHBOUND BRIDGE OVER VT ROUTE 25. THE MARK IS SET FLUSH WITH GROUND SURFACE IN THE TOP OF A 30 CM DIAMETER CONCRETE MONUMENT ANCHORED TO ROCK 1M (3.3 FT) DEEP. IT IS 2.3 M (7.5 FT) WEST OF AND ABOUT 0.2 M (0.7 FT) LOWER THAN THE WEST EDGE OF PAVEMENT OF THE I-91 SOUTHBOUND LANE, 40.2 M (131.9 FT) SOUTHEAST OF THE SOUTHEAST EDGE OF PAVEMENT OF THE I-91 SOUTHBOUND EXIT RAMP, 15.7 M (51.5 FT) SOUTHEAST OF A 40 CM CLUMP OF RED PINE, 14.3 M (46.9 FT) NORTHEAST OF A 15 CM HARDWOOD, 4.3 M (14.1 FT) NORTH OF THE NORTH END OF A STEEL BEAM GUARD RAIL, AND 0.3 M (1.0 FT) NORTH OF A FIBERGLASS WITNESS POST.

TRAVERSE TIES



ALIGNMENT COORD

DATUM	
VERTICAL	NAVD 88
HORIZONTAL	NAD 83(1996)
ADJUSTMENT	COMPASS

PROJECT NAME:	BRADFORD
PROJECT NUMBER:	BF 0191 (29)
FILE NAME:	s13c054+1e.dgn
PROJECT LEADER:	C. CARLSON
DESIGNED BY:	G. ROY
TIES	
PLOT DATE:	15-SEP-2016
DRAWN BY:	G. ROY
CHECKED BY:	M. EVANS-MONGEON
SHEET	12 OF 71