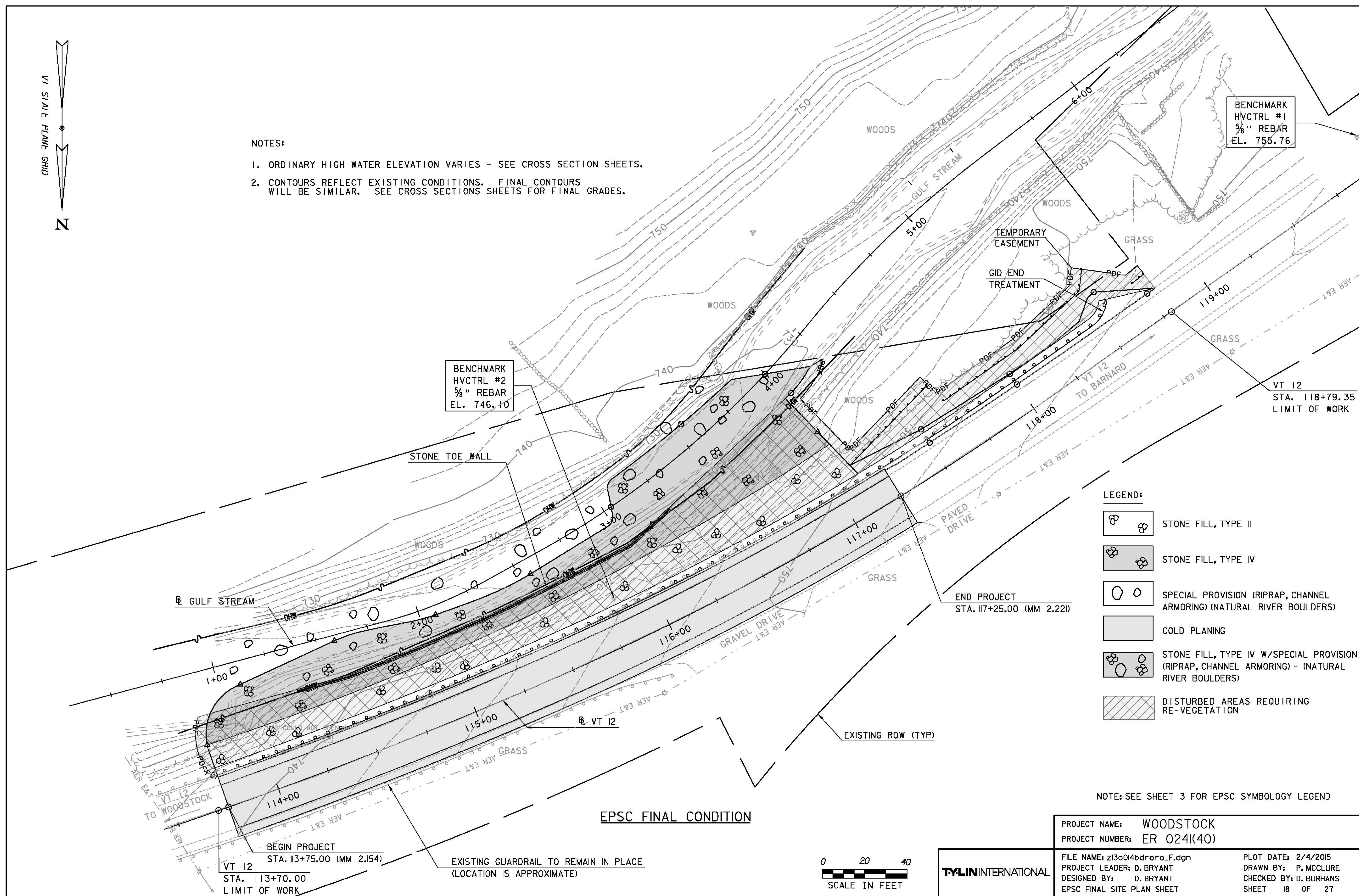


**NOTES:**

1. ORDINARY HIGH WATER ELEVATION VARIES - SEE CROSS SECTION SHEETS.
2. CONTOURS REFLECT EXISTING CONDITIONS. FINAL CONTOURS WILL BE SIMILAR. SEE CROSS SECTIONS SHEETS FOR FINAL GRADES.



BENCHMARK  
HVCTRL #2  
3/4" REBAR  
EL. 746.10

BENCHMARK  
HVCTRL #1  
3/4" REBAR  
EL. 755.76

**LEGEND:**

- STONE FILL, TYPE II
- STONE FILL, TYPE IV
- SPECIAL PROVISION (RIPRAP, CHANNEL ARMORING) (NATURAL RIVER BOULDERS)
- COLD PLANING
- STONE FILL, TYPE IV W/SPECIAL PROVISION (RIPRAP, CHANNEL ARMORING) - (NATURAL RIVER BOULDERS)
- DISTURBED AREAS REQUIRING RE-VEGETATION

NOTE: SEE SHEET 3 FOR EPSC SYMBOLY LEGEND

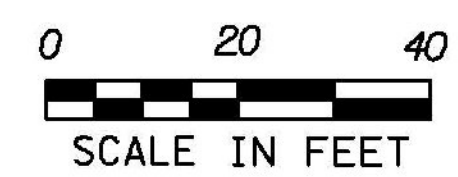
**EPSC FINAL CONDITION**

BEGIN PROJECT  
STA. 113+75.00 (MM 2.154)  
VT 12  
STA. 113+70.00  
LIMIT OF WORK

EXISTING GUARDRAIL TO REMAIN IN PLACE  
(LOCATION IS APPROXIMATE)

END PROJECT  
STA. 117+25.00 (MM 2.221)

VT 12  
STA. 118+79.35  
LIMIT OF WORK



**TYLIN INTERNATIONAL**

PROJECT NAME: WOODSTOCK	PLOT DATE: 2/4/2015
PROJECT NUMBER: ER 024I(40)	DRAWN BY: P. MCCLURE
FILE NAME: z13c014bdrero.F.dgn	CHECKED BY: D. BURHANS
PROJECT LEADER: D. BRYANT	SHEET 18 OF 27
DESIGNED BY: D. BRYANT	
EPSC FINAL SITE PLAN SHEET	