

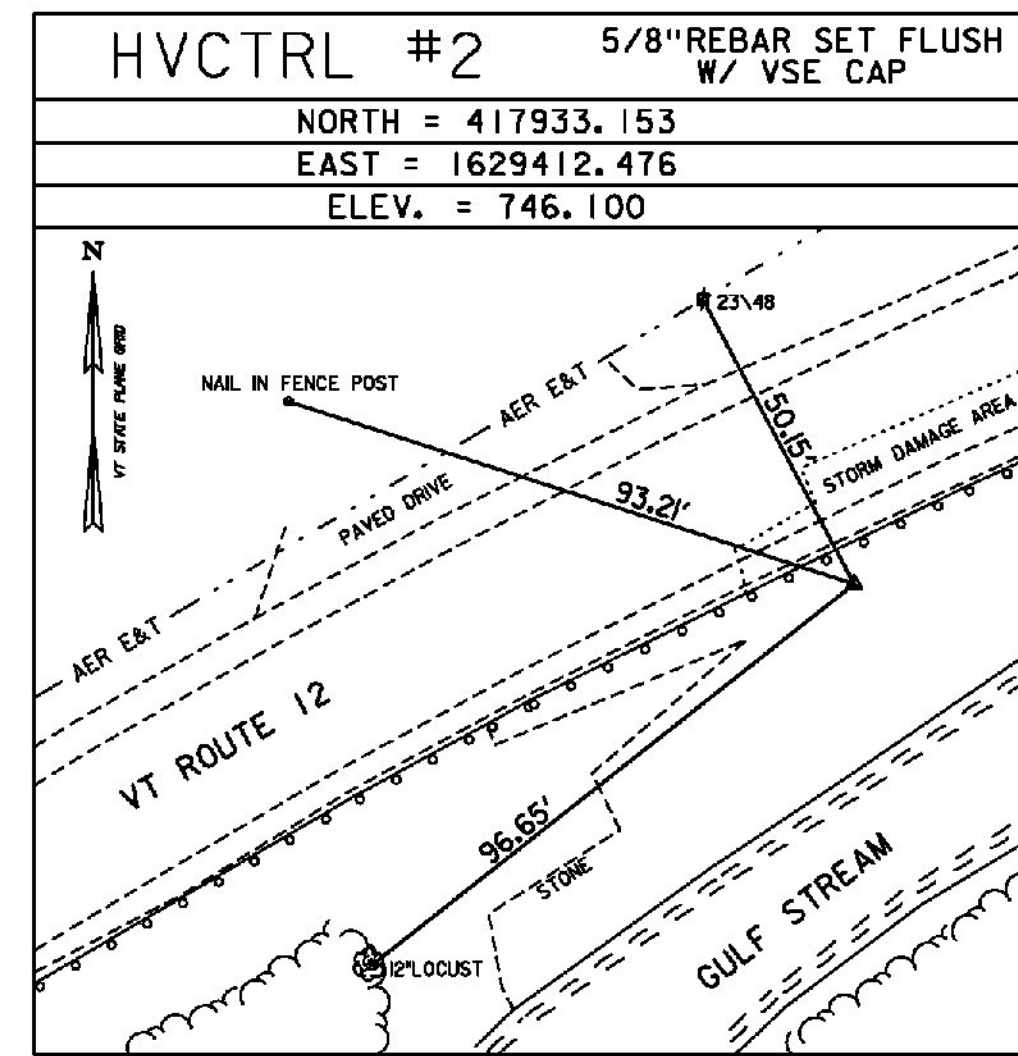
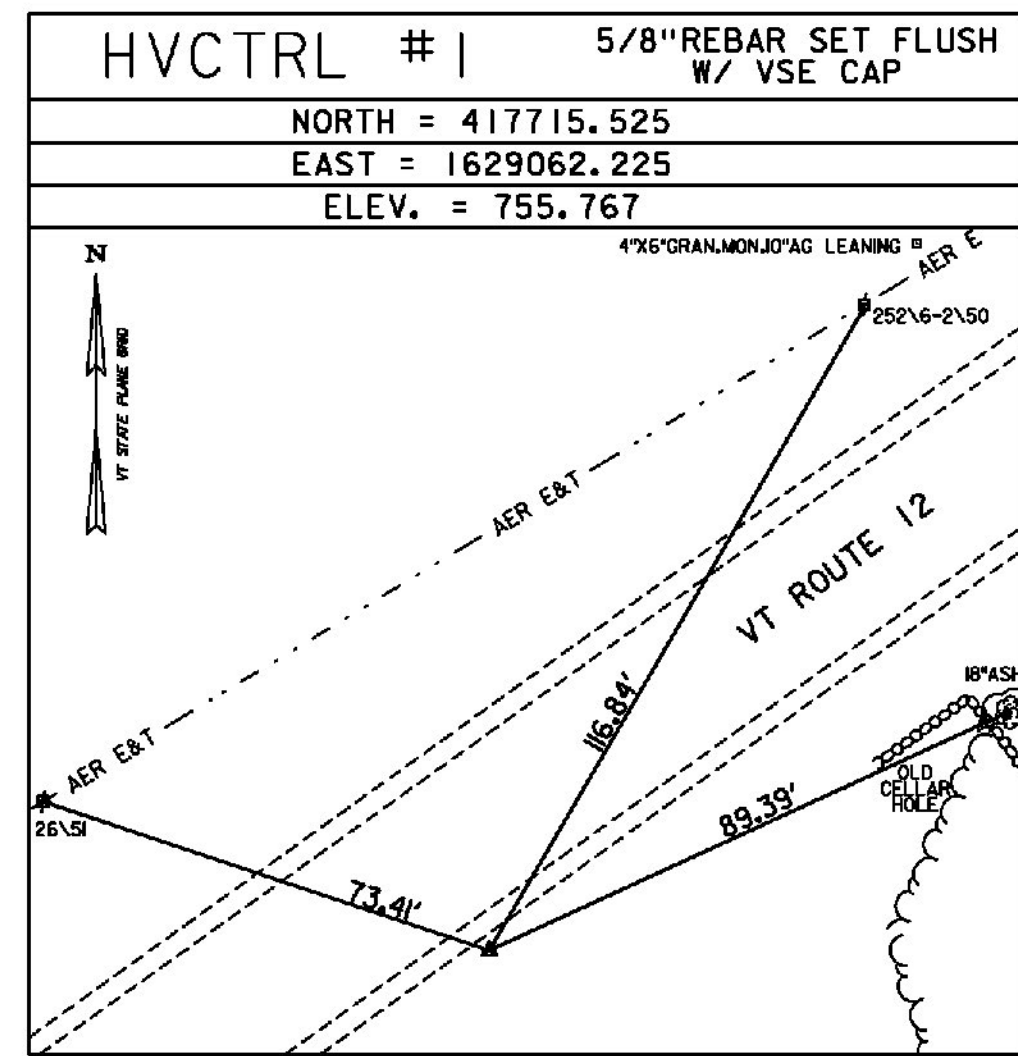
GPS/NGS CONTROL POINTS

WHITE RIVER JCT CORS ARP

ID VTWR
 N = 418844.60
 E = 1688745.13
 ELLIP HEIGHT = 320.00

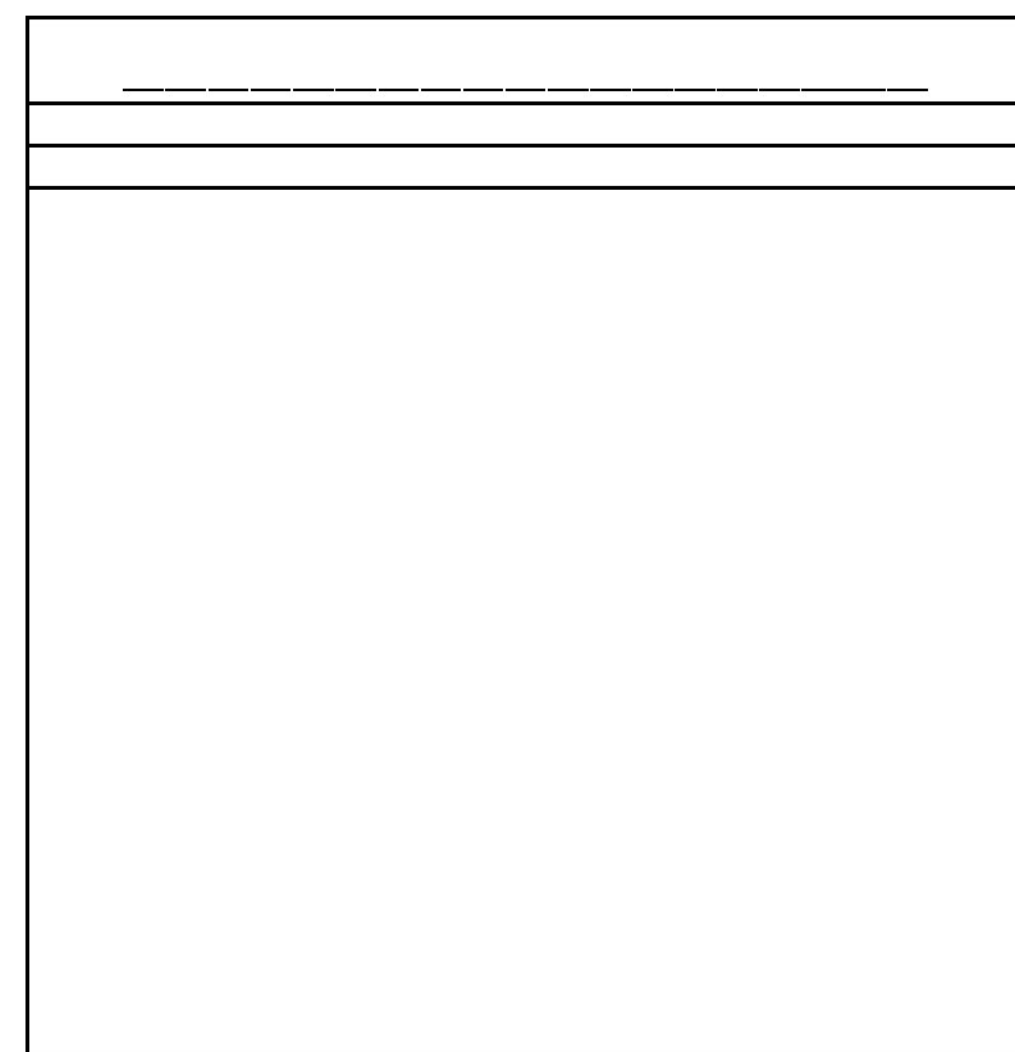
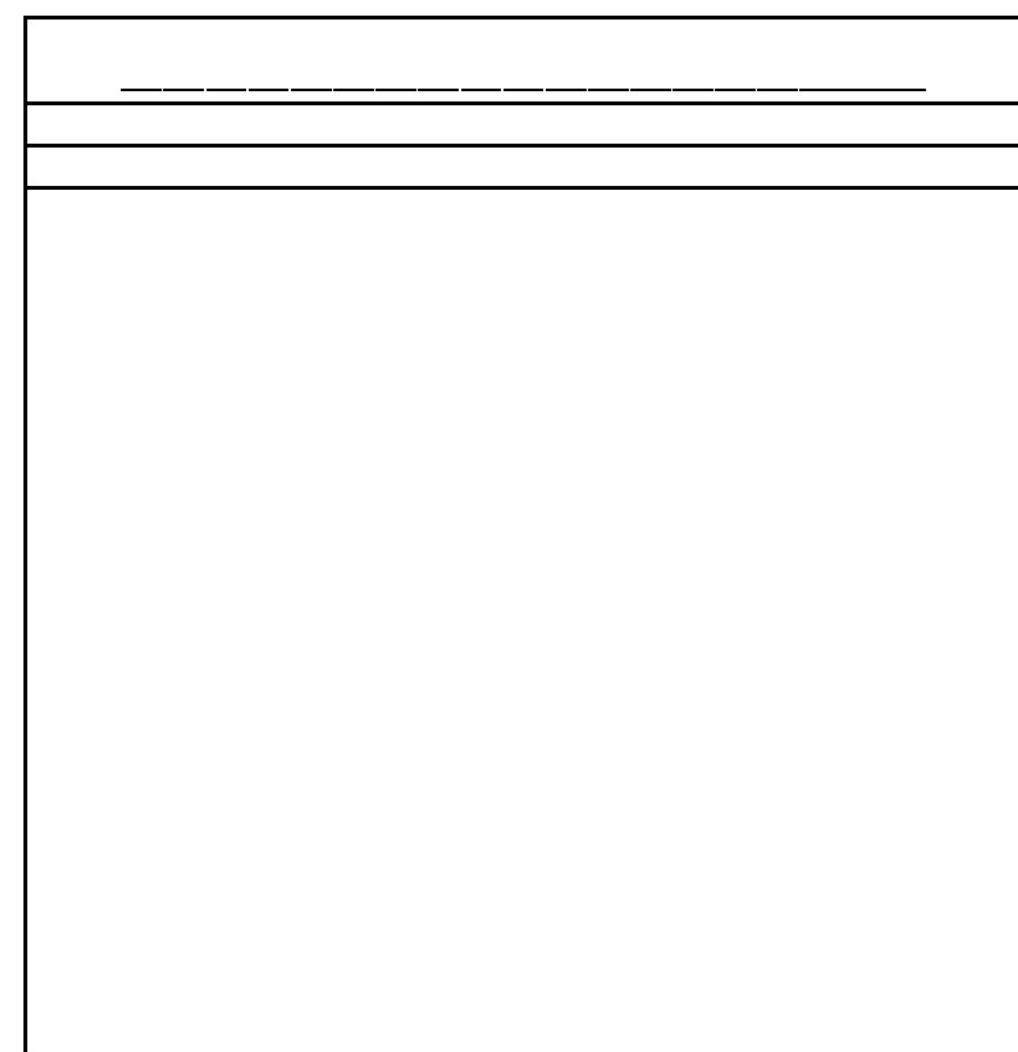
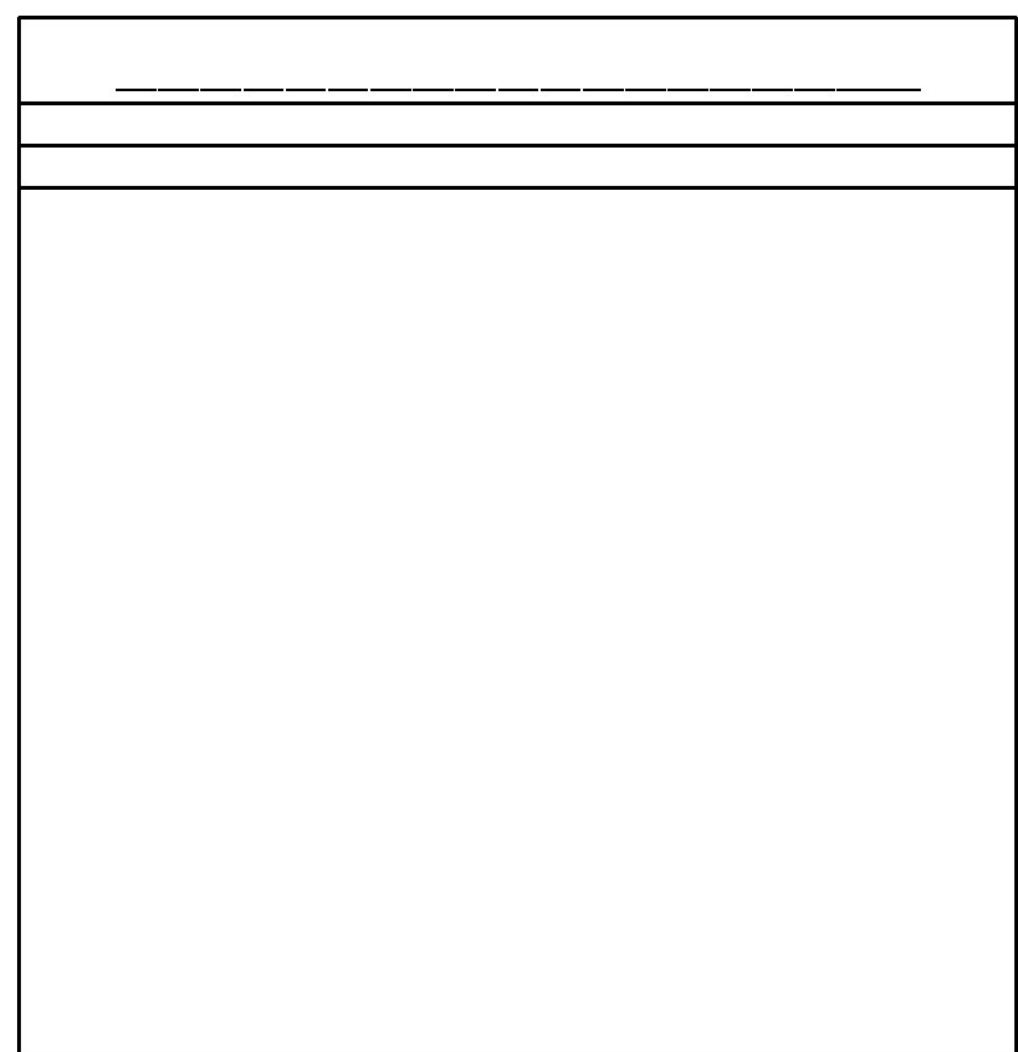
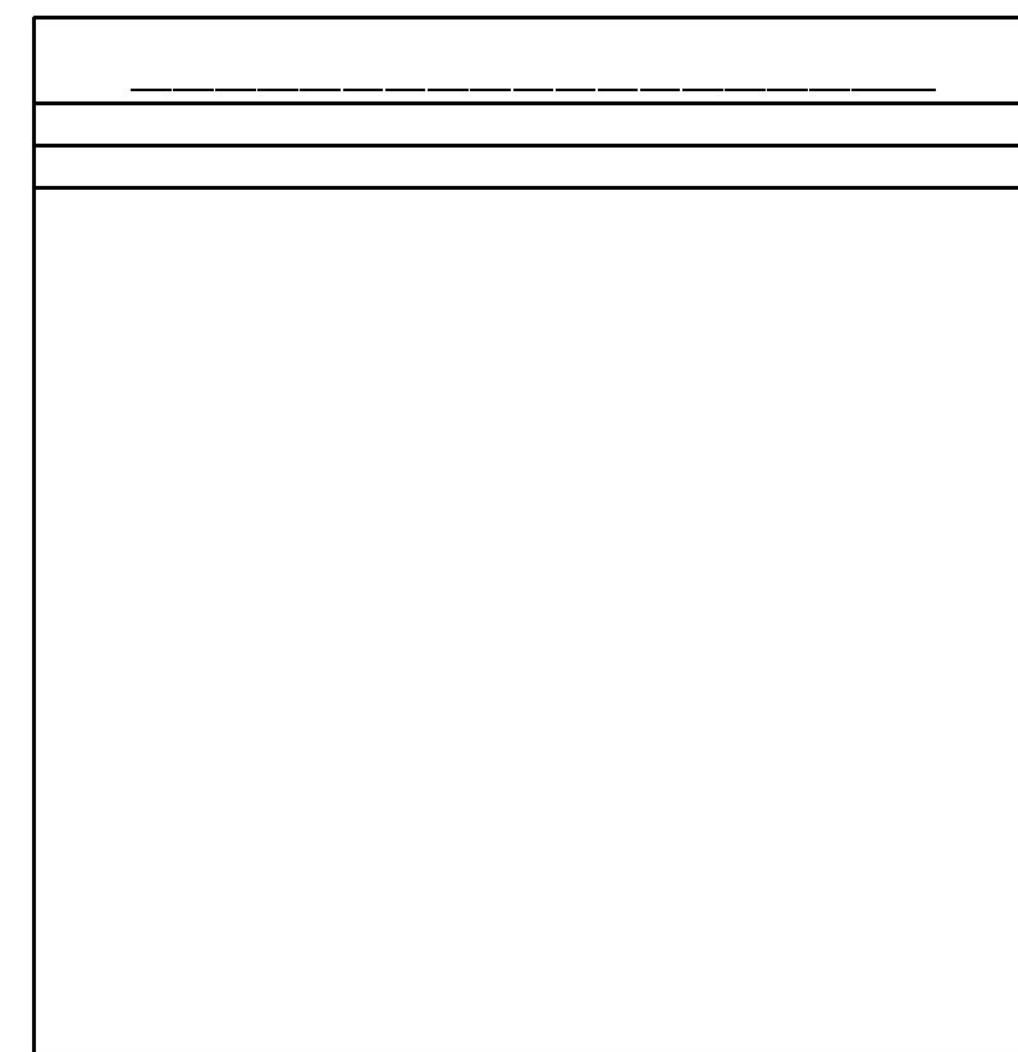
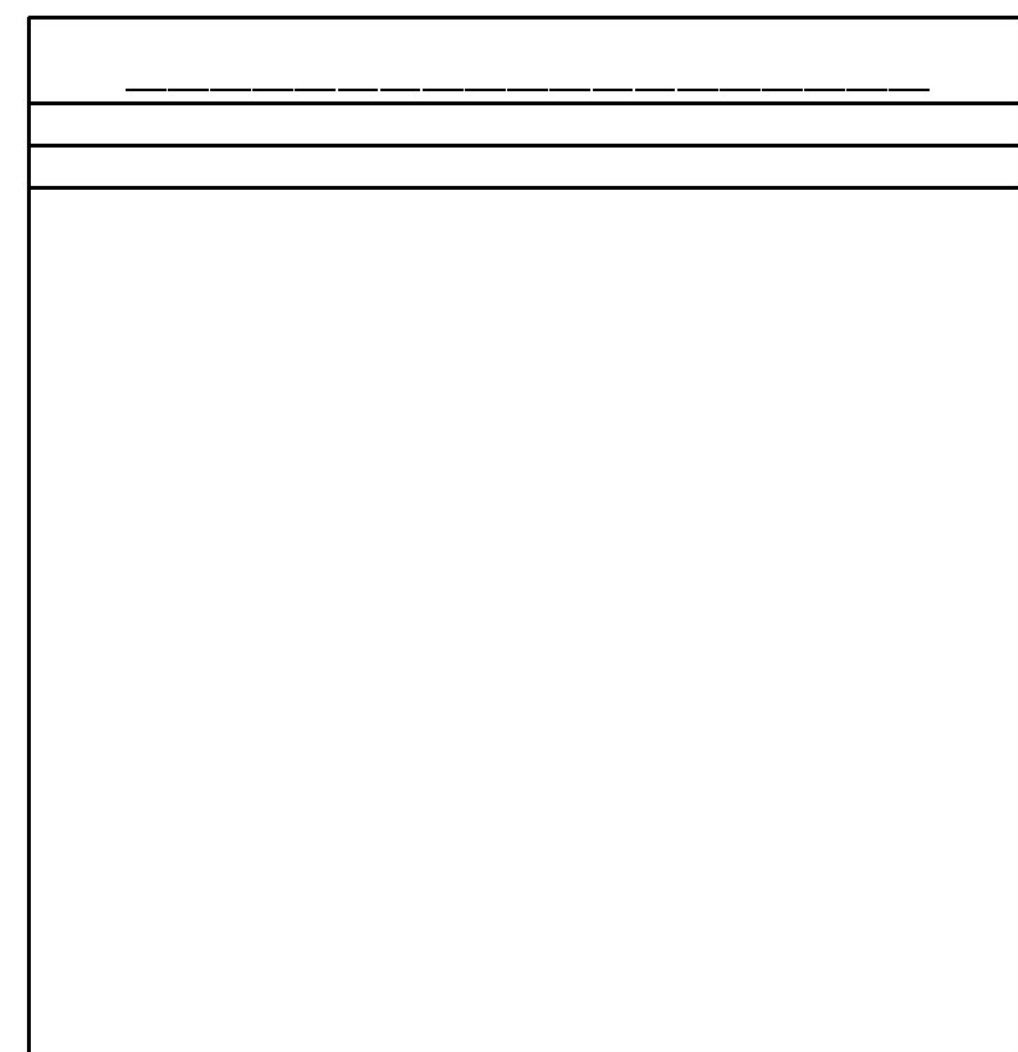
STATION IS A GPS CONTINUOUSLY OPERATING REFERENCE STATION. STATION IS THE ANTENNA REFERENCE POINT OF THE GPS ANTENNA. THE ANTENNA IS MOUNTED ON THE ROOF OF THE DISTRICT COURT HOUSE IN WHITE RIVER JUNCTION, VT. THE MONUMENT IS ATTACHED TO A THREE STORY BRICK BUILDING WITH A 5 FT CONCRETE FOUNDATION BUILT IN 1988. THE MAST IS A 1.75 INCH DIA GALV PIPE THAT IS 108 INCHES LONG. THE MAST ATTACHED TO A STEEL MOUNTING FRAME WITH THREE ATTACHMENTS CONSISTING OF 3/8 INCH SS THROUGH BOLTS. THE MOUNTING FRAME IS ATTACHED TO THE BUILDING USING 8 ATTACHMENT POINTS. ALL 8 ATTACHMENT POINTS ARE 1/2 INCH SS BOLTS SECURED TO THE BRICK OR CONC WITH LEAD ANCHORS.

TRAVERSE TIES



* PROJECT COMPLETED: JUNE 4, 2013 BY VSE, T. CATTANEO-PC, T. YEFCHAK

ALIGNMENT TIES



DATUM
 VERTICAL NAVD 88(GEODI2A) FT
 HORIZONTAL NAD 83(2011) 6FT
 ADJUSTMENT LSQ



PROJECT NAME: **WOODSTOCK**
 PROJECT NUMBER: **ER 0241(40)**

FILE NAME: _____ PLOT DATE: _____
 PROJECT LEADER: **D. BRYANT** DRAWN BY: **M. BACKMAN**
 DESIGNED BY: **A. McQUEENEY** CHECKED BY: **A. McQUEENEY**
 TIE SHEET SHEET **7** OF **27**