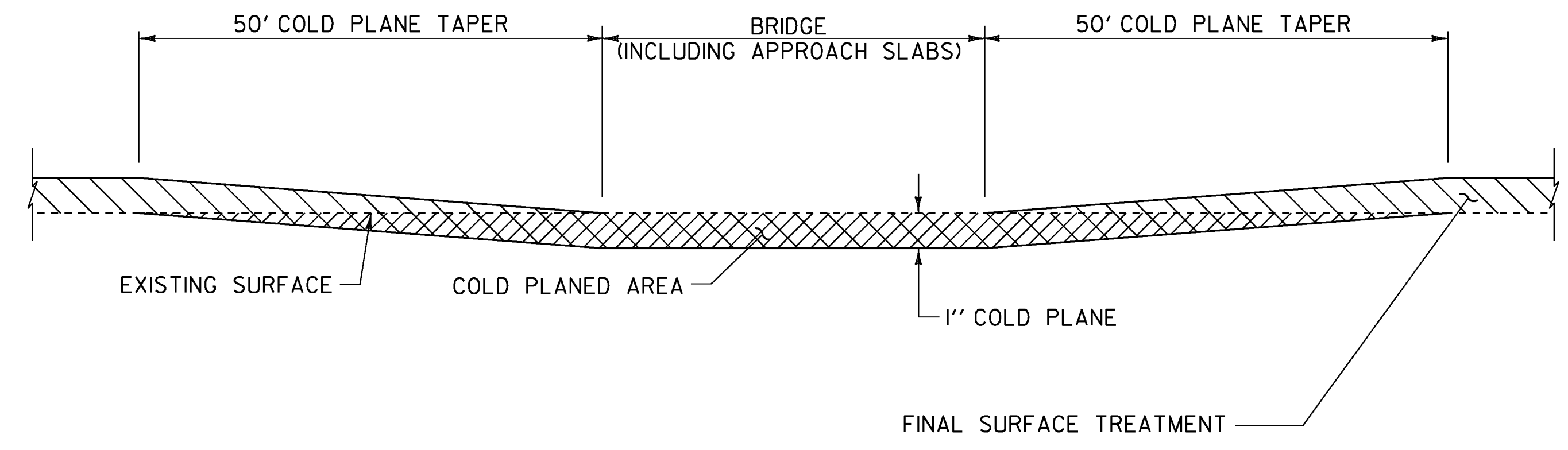
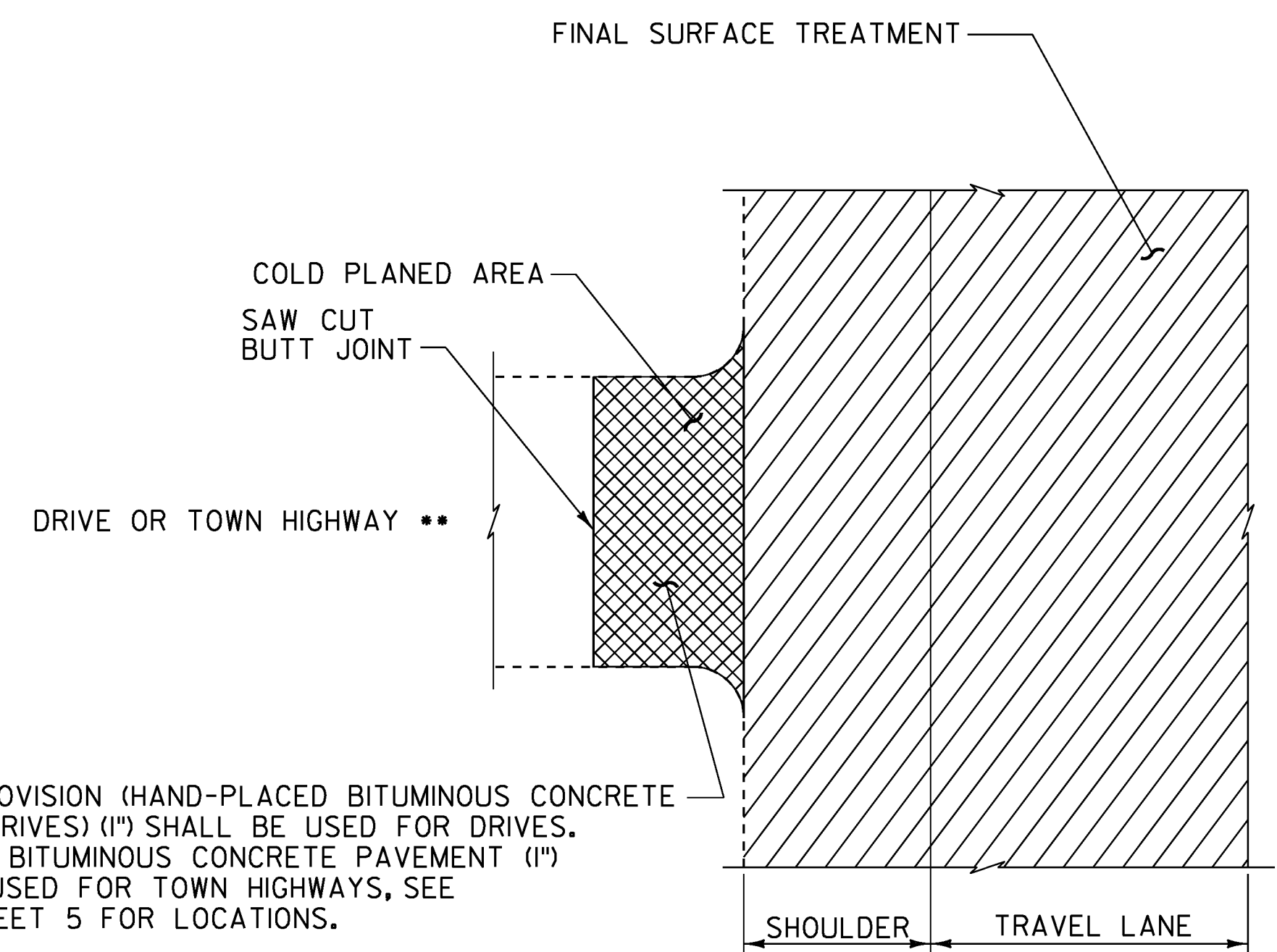


COLD PLANE DETAIL AT BEGINEND PROJECT

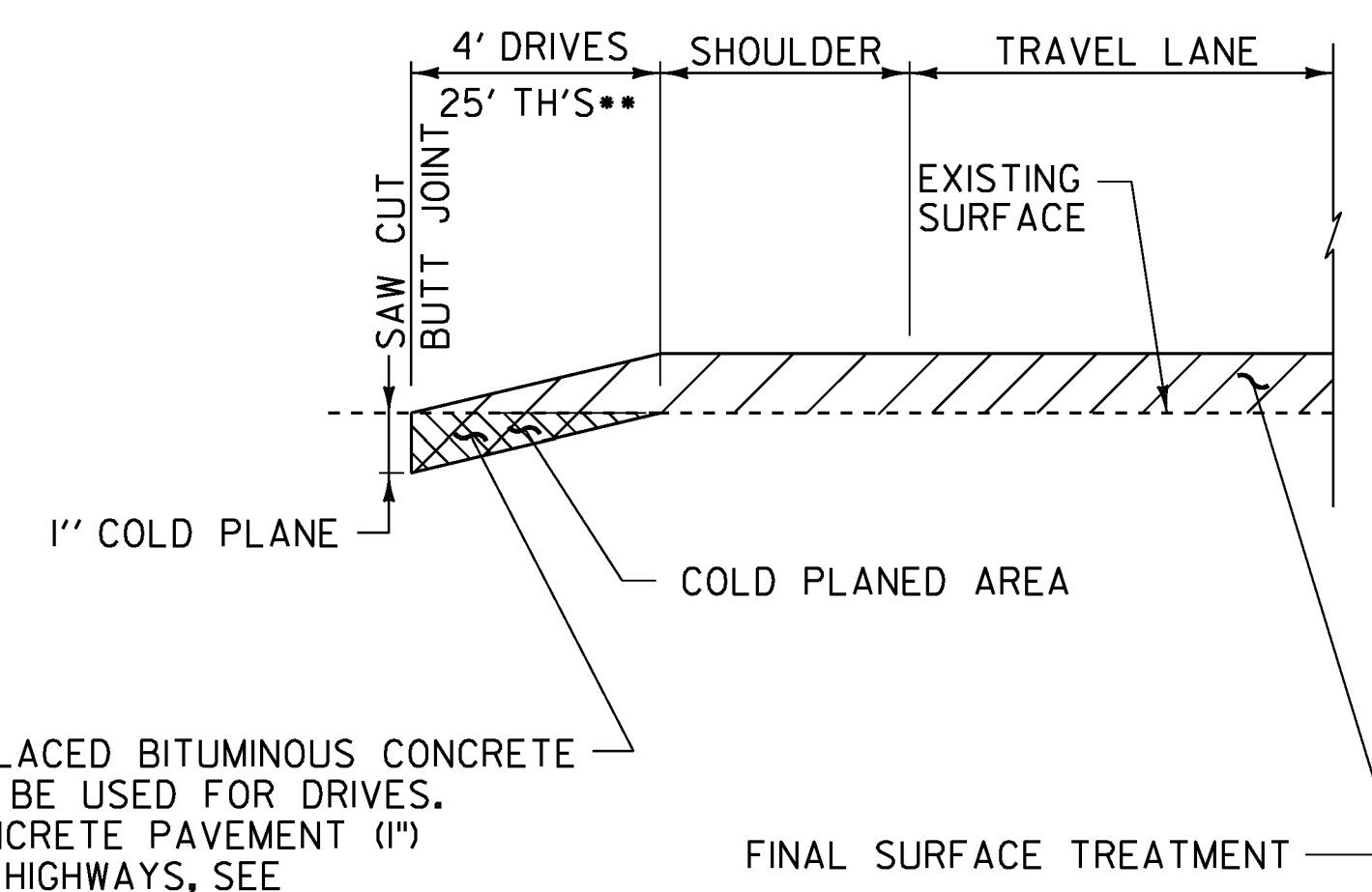


BRIDGE COLD PLANE DETAIL

- NOTES:
1. ALL NEW JOINTS TO BE PAID FOR UNDER CONTRACT ITEM 516.10.
 2. THE CONTRACTOR SHALL TAKE PRECAUTIONS TO AVOID DAMAGING DRAINAGE STRUCTURES AND EXPANSION JOINTS. ANY DAMAGE CAUSED BY THE CONTRACTOR SHALL BE REPAIRED BY THE CONTRACTOR AT NO COST TO THE STATE.
 3. THE CONTRACTOR SHALL TAKE PRECAUTIONS TO AVOID THE ACCUMULATION OF DEBRIS IN THE DRAINAGE STRUCTURES LOCATED AT CURB LINE AND IN THE EXPANSION JOINTS. THE CONTRACTOR SHALL EXAMINE THESE BRIDGE FEATURES ON A DAILY BASIS TO ENSURE THAT DEBRIS HAS NOT ACCUMULATED. ANY DEBRIS WHICH IS PRESENT SHALL BE REMOVED BY THE CONTRACTOR AT NO COST TO THE STATE.
 4. THE CONTRACTOR SHALL USE CAUTION WHEN COLD PLANING AND PAVING OPERATIONS OCCUR ON BRIDGE DECKS. SHOULD ANY DAMAGE OCCUR TO THE DECK OR MEMBRANE AS A RESULT OF THESE OPERATIONS THE ENGINEER SHALL CONTACT THE VTRANS CONSTRUCTION STRUCTURES ENGINEER TO PROVIDE AN ASSESSMENT OF THE DAMAGE AND RECOMMEND ANY NECESSARY REPAIRS. THE CONSTRUCTION STRUCTURES ENGINEER WILL ALSO DETERMINE IF THE DAMAGE WAS AVOIDABLE BY THE CONTRACTOR. IF THE CONTRACTOR IS DETERMINED BY THE ENGINEER TO BE AT FAULT FOR THE DAMAGE, THE RECOMMENDED REPAIRS SHALL BE COMPLETED BY THE CONTRACTOR AT NO COST TO THE STATE.



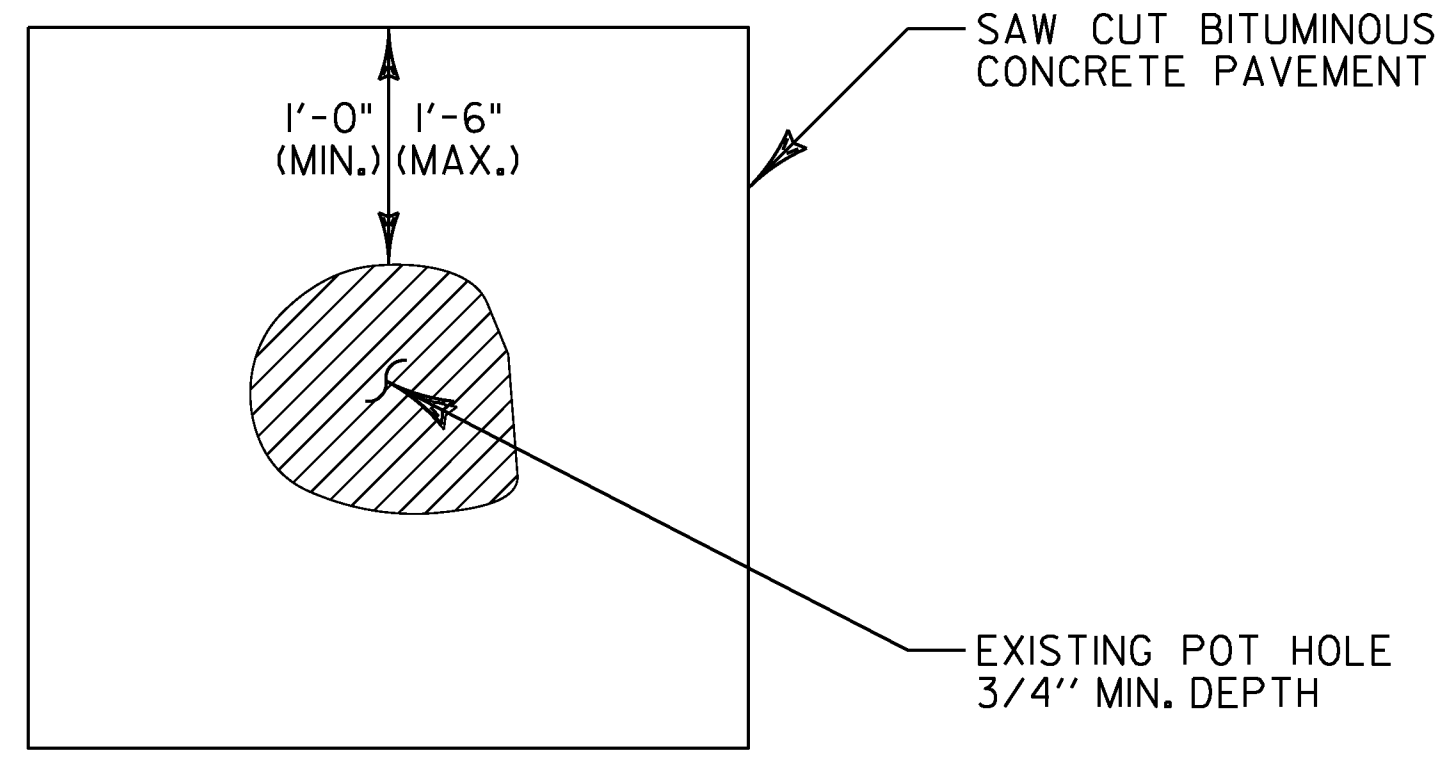
SPECIAL PROVISION (HAND-PLACED BITUMINOUS CONCRETE MATERIAL, DRIVES) (1") SHALL BE USED FOR DRIVES. SUPERPAVE BITUMINOUS CONCRETE PAVEMENT (1") SHALL BE USED FOR TOWN HIGHWAYS, SEE LAYOUT SHEET 5 FOR LOCATIONS.



SPECIAL PROVISION (HAND-PLACED BITUMINOUS CONCRETE MATERIAL, DRIVES) (1") SHALL BE USED FOR DRIVES. SUPERPAVE BITUMINOUS CONCRETE PAVEMENT (1") SHALL BE USED FOR TOWN HIGHWAYS, SEE LAYOUT SHEET 5 FOR LOCATIONS.

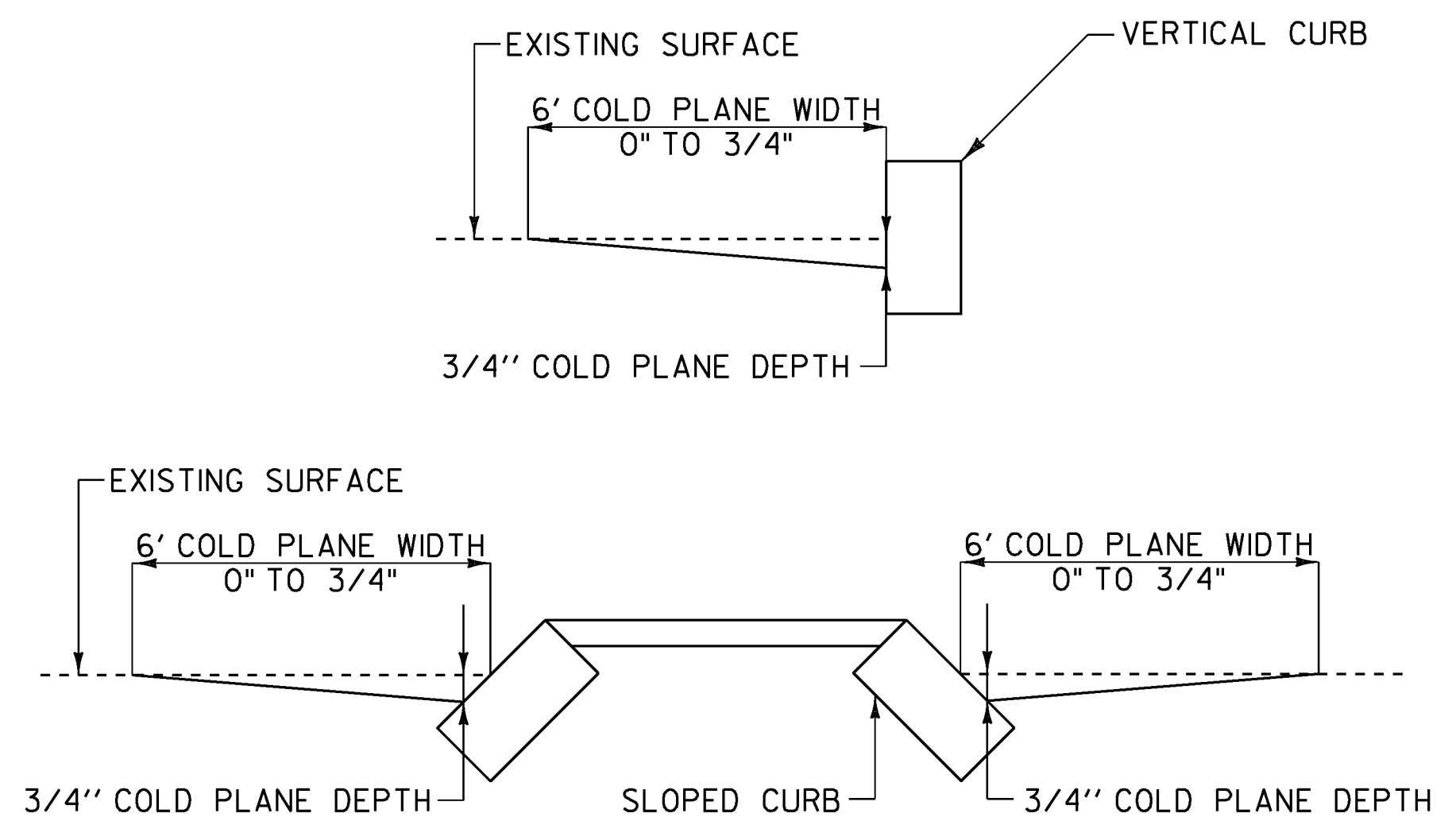
COLD PLANE DETAILS AT DRIVES & TOWN HIGHWAYS

** TOWN HIGHWAYS SHALL BE COLD PLANED BACK 25 FEET UNLESS SHOWN OTHERWISE ON THE PLANS.



TYPICAL - POT HOLE REPAIR

NOTE:
EMULSIFIED ASPHALT SHALL BE APPLIED AT ALL PATCH INTERFACES AT A RATE OF 0.25 - 0.50 GAL/SY. EMULSIFIED ASPHALT SHALL MEET THE REQUIREMENTS OF SECTION 404 AND WILL BE CONSIDERED INCIDENTAL TO THE PATCHING MATERIAL.



CURB AND ISLAND COLD PLANE DETAIL

NOTE:
COLD PLANE A SIX FOOT WIDTH ALONG CURB AND AROUND ISLANDS TAPERING FROM 0" TO 3/4".
COLD PLANE LOCATIONS:
BRANDON CURB RIGHT MM 4.447 TO MM 5.166 AND MIDDLEBURY AROUND ISLANDS AT VT ROUTE 125 MM 1.176 TO MM 1.397.

NOT TO SCALE

PROJECT NAME:	BRANDON - MIDDLEBURY
PROJECT NUMBER:	NH SURF(43)
FILE NAME:	pl3B6I6-Brandon-Middlebury.dgn
PROJECT LEADER:	M. FOWLER
DESIGNED BY:	N. PAPPAS
PROJECT COLD PLANE DETAILS	
PL0T DATE:	10-JUN-2014
DRAWN BY:	N. PAPPAS
CHECKED BY:	M. FOWLER
SHEET	5 OF 28