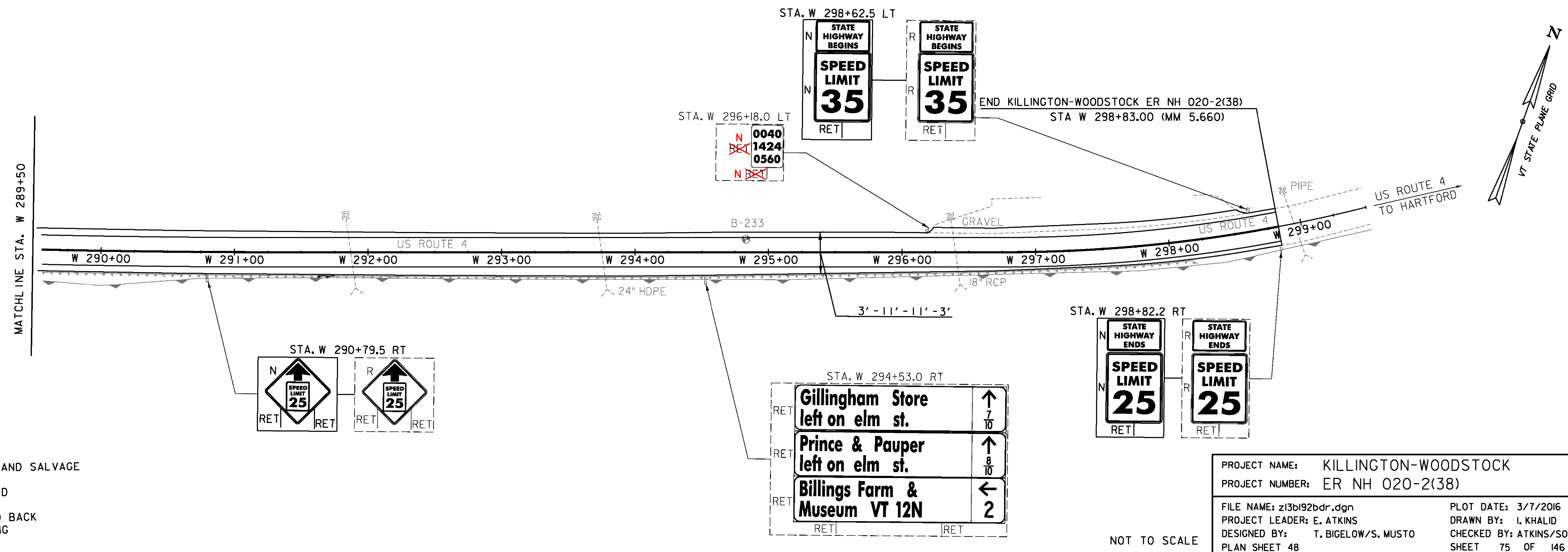
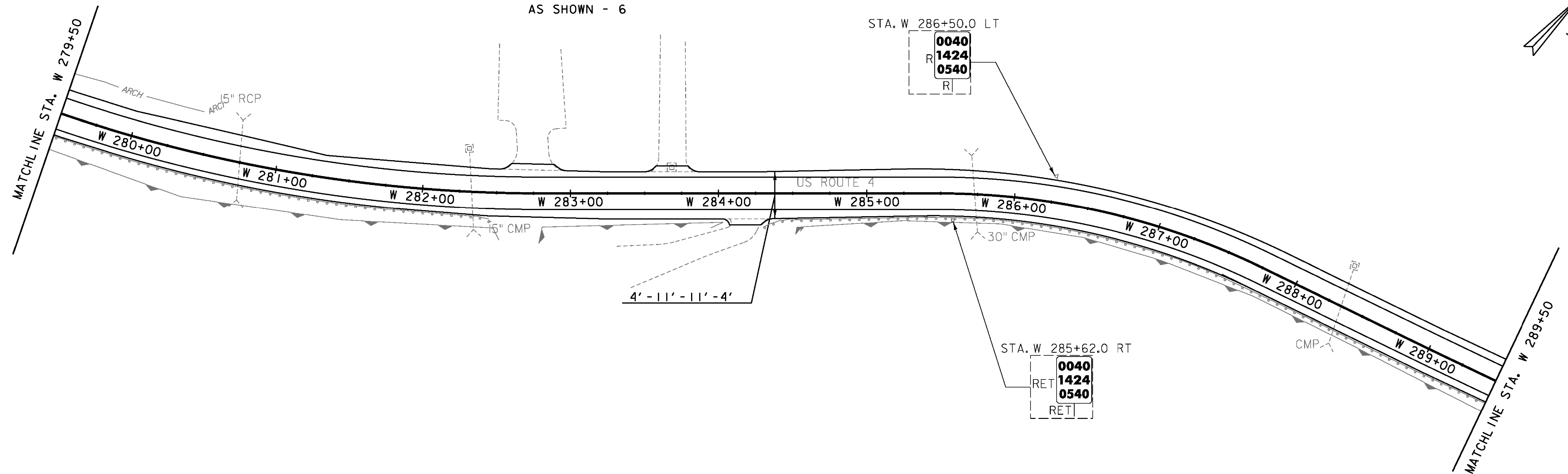


STEEL BEAM GUARDRAIL, GALVANIZED  
 STA. W 291+61.4 RT - W 291+73.9 RT  
 REMOVAL AND DISPOSAL OF GUARDRAIL  
 STA. W 291+61.4 RT - W 291+73.9 RT

TEMPORARY 4 INCH WHITE LINE, PAINT  
 DURABLE 4 INCH WHITE LINE, (SEE OPTION ITEMS)  
 (ALL LINES WILL INCLUDE EDGE LINE BREAKS AND  
 RADII FOR SIDE ROADS)  
 STA. W 279+50 - W 298+83 (SOLID LT & RT)

TEMPORARY 4 INCH YELLOW LINE, PAINT  
 DURABLE 4 INCH YELLOW LINE, (SEE OPTION ITEMS)  
 (ALL LINES WILL INCLUDE CENTER LINE BREAKS  
 FOR SIDE ROADS)  
 STA. W 279+50 - W 298+83 (SOLID LT & RT)

REMOVING SIGNS  
 AS SHOWN - 6



**SIGN LEGEND**  
 R = REMOVE  
 R&S = REMOVE AND SALVAGE  
 RET = RETAIN  
 S = SALVAGED  
 N = NEW  
 B-B = BACK TO BACK  
 --- = EXISTING  
 — = NEW

NOT TO SCALE

PROJECT NAME: KILLINGTON-WOODSTOCK  
 PROJECT NUMBER: ER NH 020-2(38)  
 FILE NAME: z13bi92bdr.dgn  
 PROJECT LEADER: E. ATKINS  
 DESIGNED BY: T. BIGELOW/S. MUSTO  
 PLAN SHEET 48  
 PLOT DATE: 3/7/2016  
 DRAWN BY: I. KHALID  
 CHECKED BY: ATKINS/SOBEL  
 SHEET 75 OF 146