

MILLED RUMBLE STRIPS (CENTERLINE)

STA. B 133+50 - B 134+00  
STA. B 139+00 - B 143+50

STEEL BEAM GUARDRAIL, GALVANIZED

STA. B 142+25.8 LT - B 143+19.5 LT

MANUFACTURED TERMINAL SECTION, FLARED

STA. B 143+19.5 LT - B 143+50.0 LT

REMOVAL AND DISPOSAL OF GUARDRAIL

STA. B 142+25.8 LT - B 143+50.0 LT

TEMPORARY 4 INCH WHITE LINE, PAINT

DURABLE 4 INCH WHITE LINE, (SEE OPTION ITEMS)

(ALL LINES WILL INCLUDE EDGE LINE BREAKS  
AND RADIUS FOR SIDE ROADS)

STA. B 133+50 - B 143+50 (SOLID LT & RT)

TEMPORARY 4 INCH YELLOW LINE, PAINT

DURABLE 4 INCH YELLOW LINE, (SEE OPTION ITEMS)

(ALL LINES WILL INCLUDE CENTER LINE BREAKS  
FOR SIDE ROADS)

STA. B 133+50 - B 143+50 (SOLID LT & RT)

TEMPORARY 24 INCH STOP BAR, PAINT

DURABLE 24 INCH STOP BAR, (SEE OPTION ITEMS)

STA. B 134+80 RT

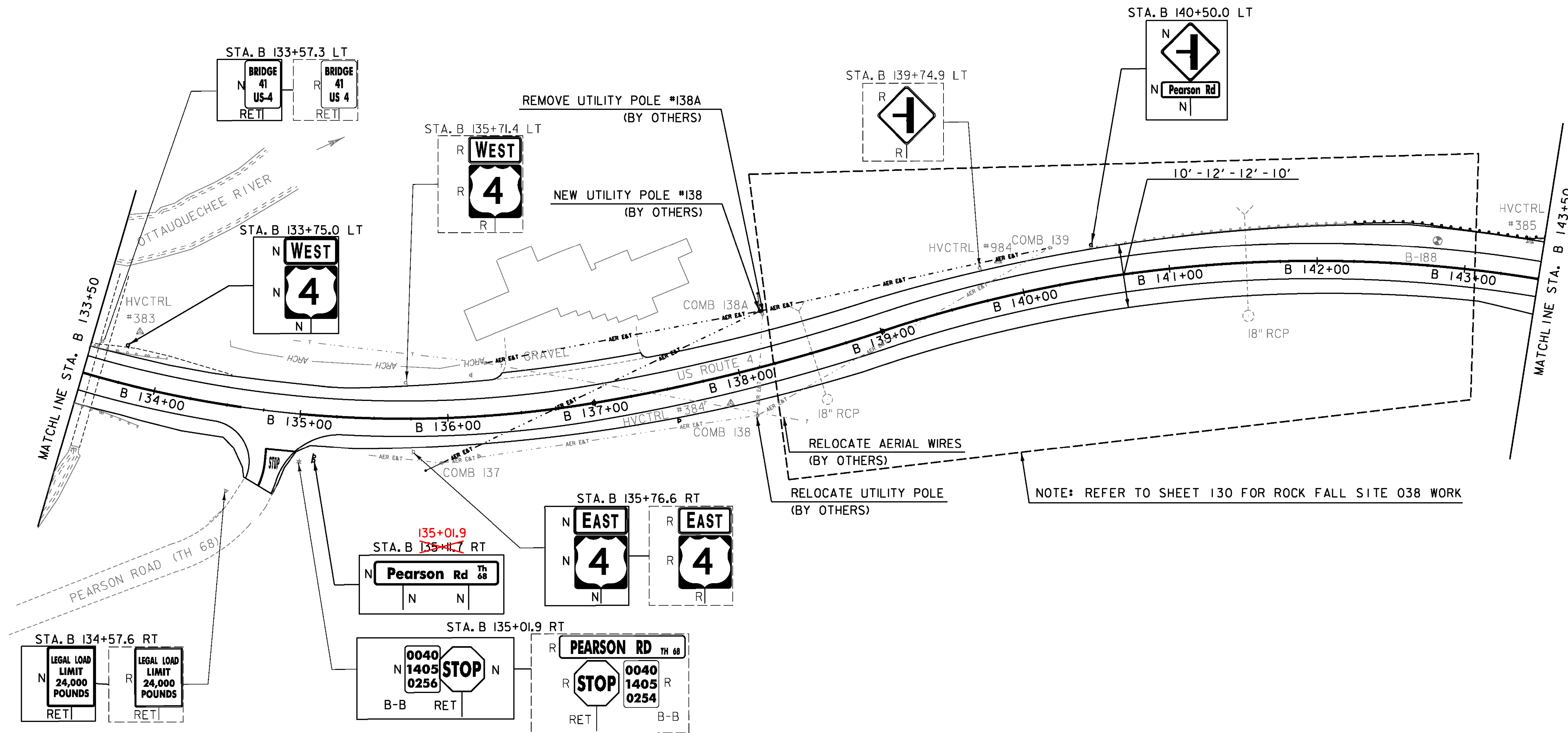
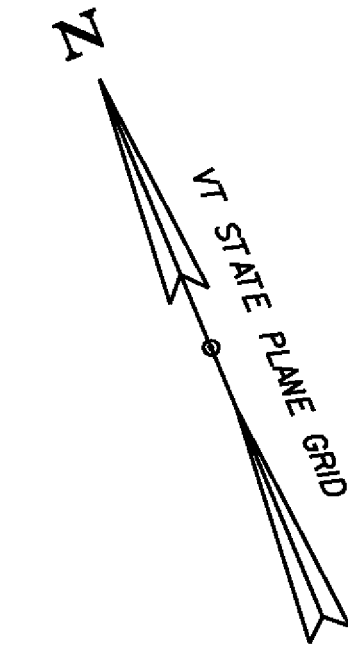
TEMPORARY LETTER OR SYMBOL, PAINT

DURABLE LETTER OR SYMBOL, (SEE OPTION ITEMS)

STA. B 134+80 RT "STOP" (4 EA)

REMOVING SIGNS

AS SHOWN - 10



SIGN LEGEND

- R = REMOVE
- R&S = REMOVE AND SALVAGE
- RET = RETAIN
- S = SALVAGED
- N = NEW
- B-B = BACK TO BACK
- = EXISTING
- = NEW

PROJECT NAME:	KILLINGTON-WOODSTOCK
PROJECT NUMBER:	ER NH 020-2(38)
FILE NAME:	z13b192bdr.dgn
PROJECT LEADER:	E. ATKINS
DESIGNED BY:	T. BIGELOW/S. MUSTO
PLAN SHEET 13	
PLOT DATE:	3/7/2016
DRAWN BY:	I. KHALID
CHECKED BY:	ATKINS/SOBEL
SHEET	40 OF 146

NOT TO SCALE