

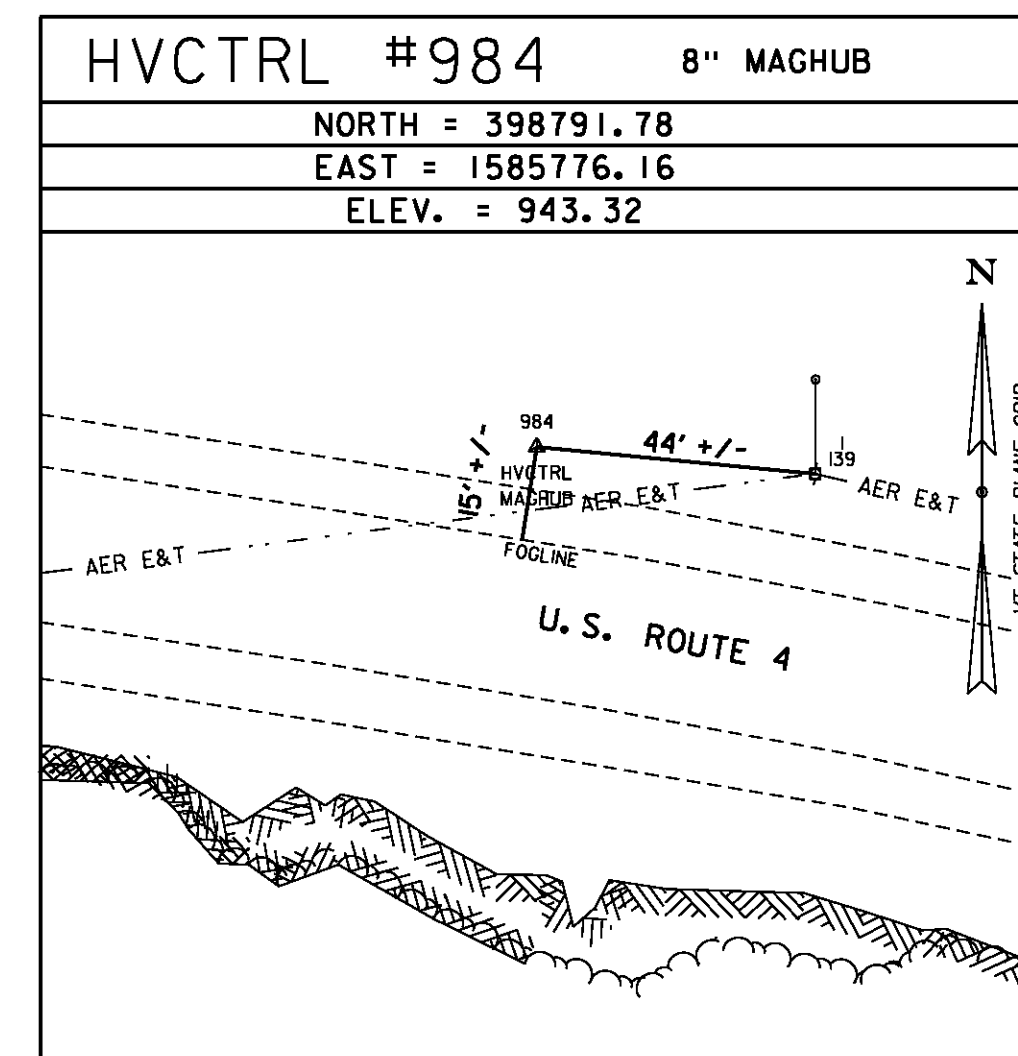
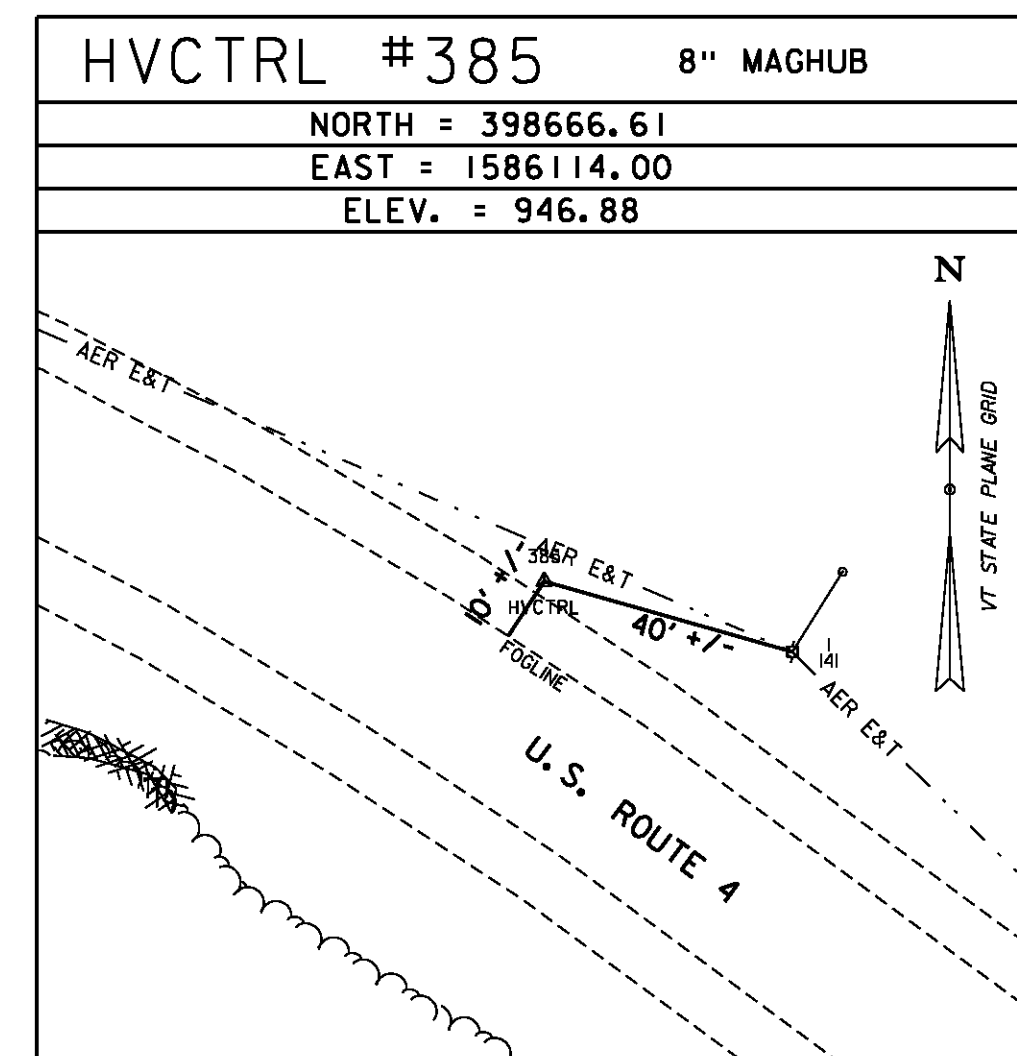
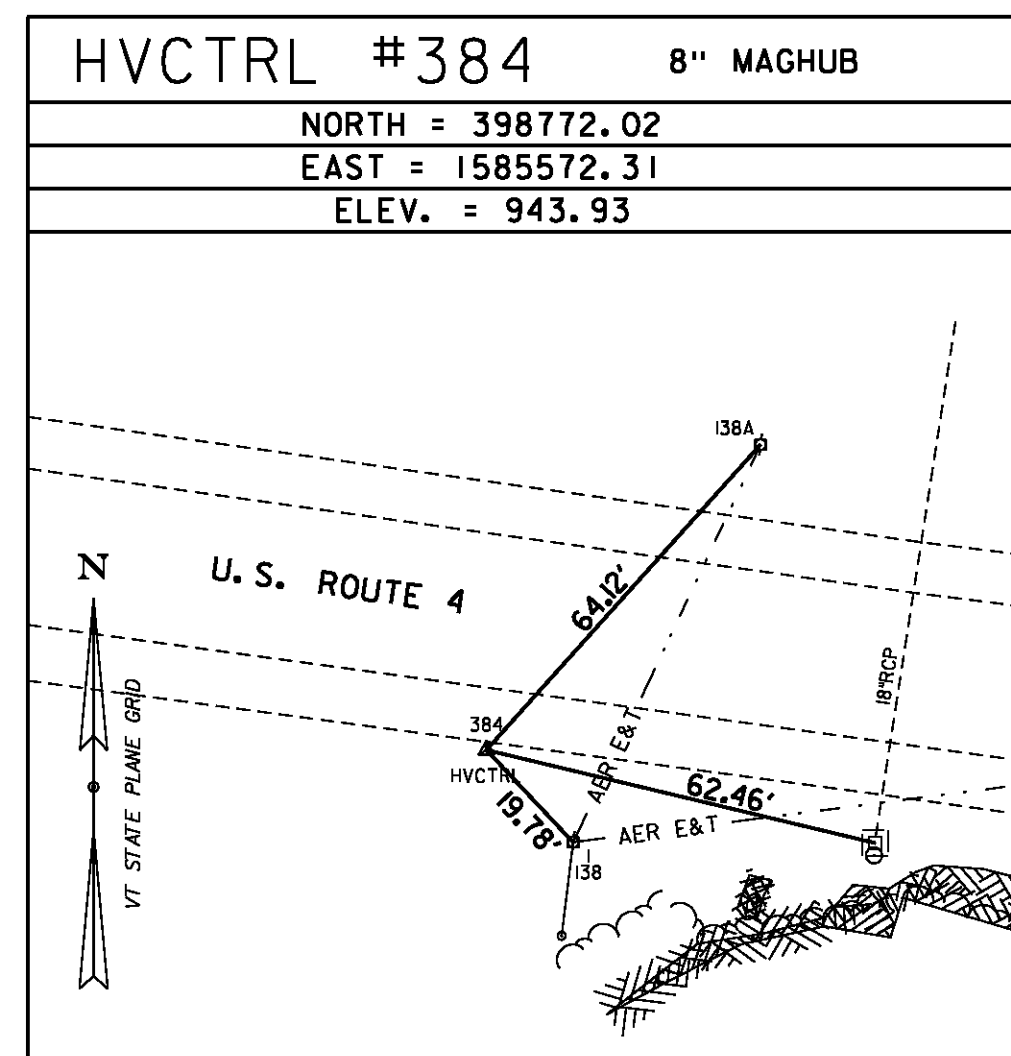
GPS/NGS CONTROL POINTS

B94034

PID AA8791
 N = 398203.69
 E = 1586637.14
 ELEV. = 945.59

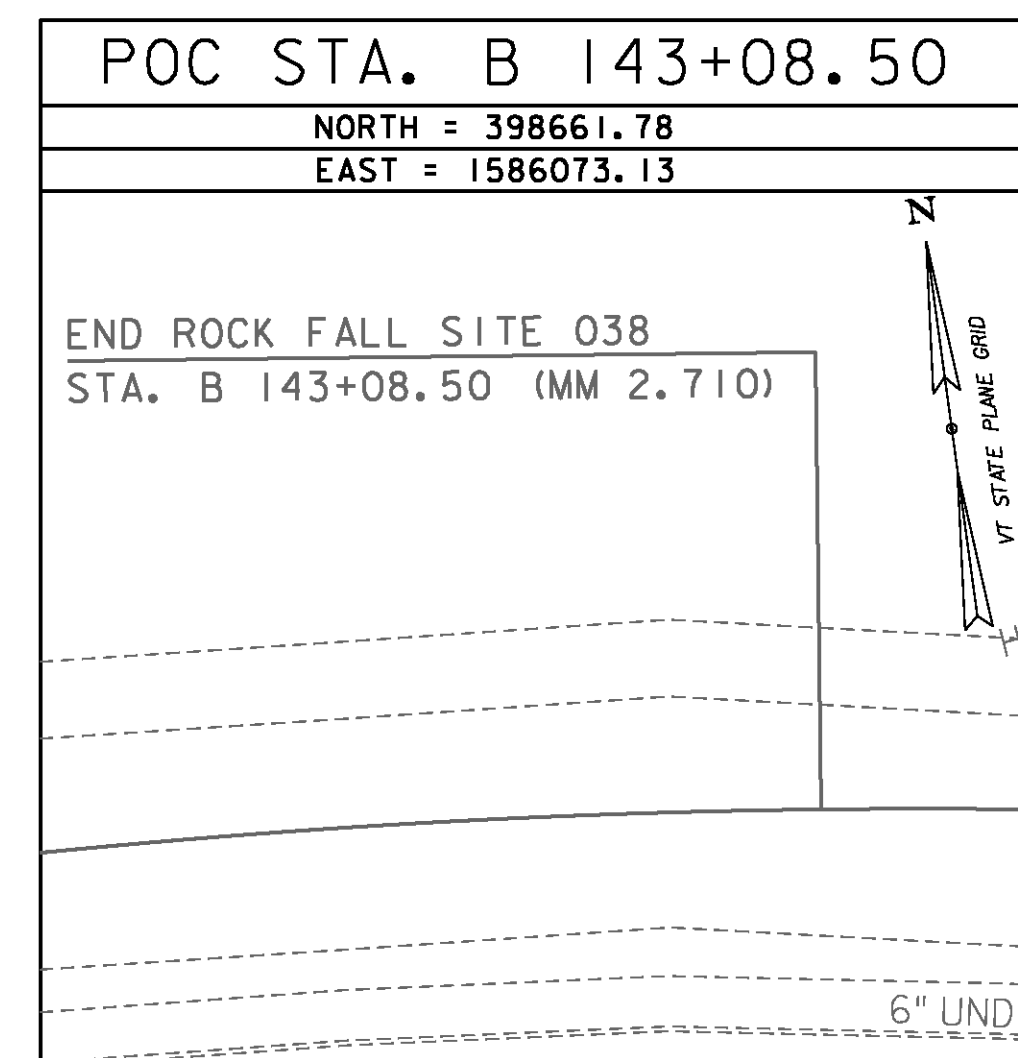
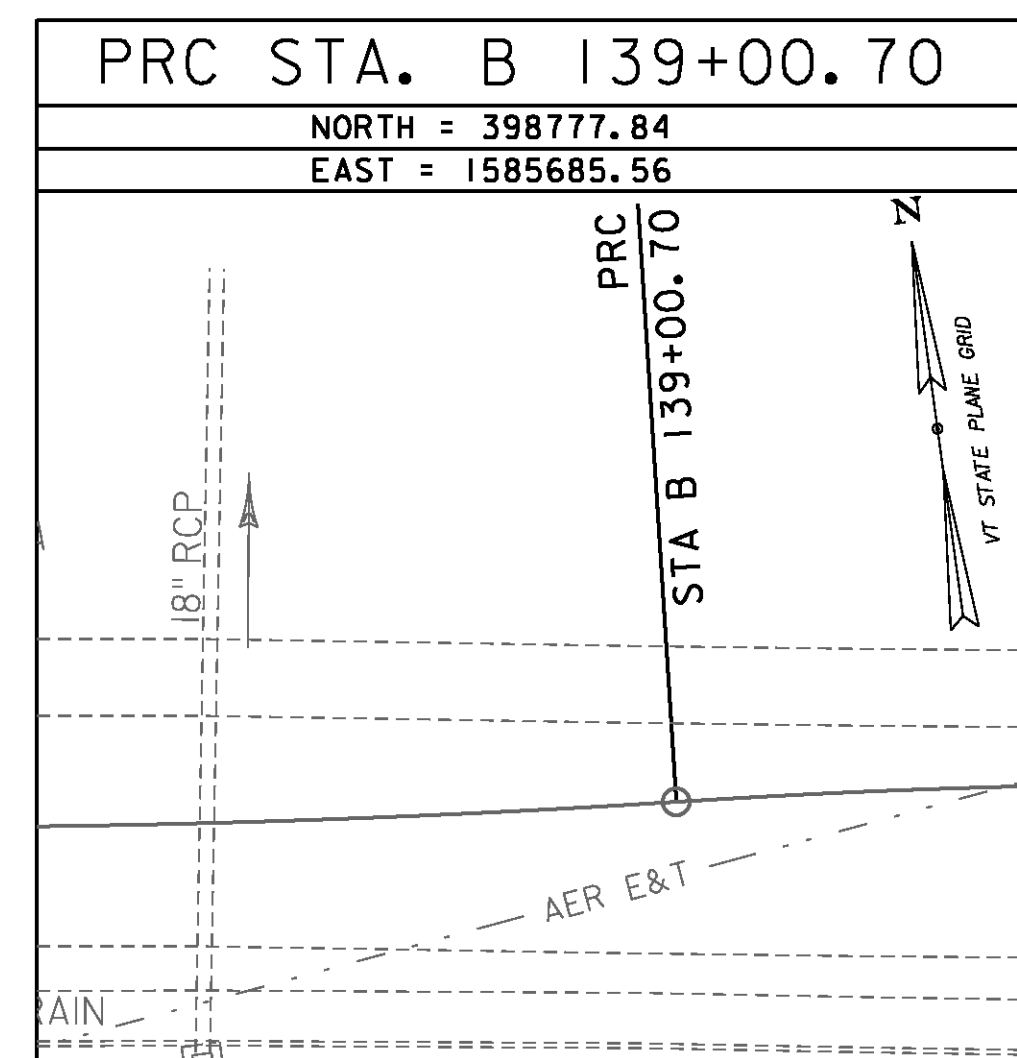
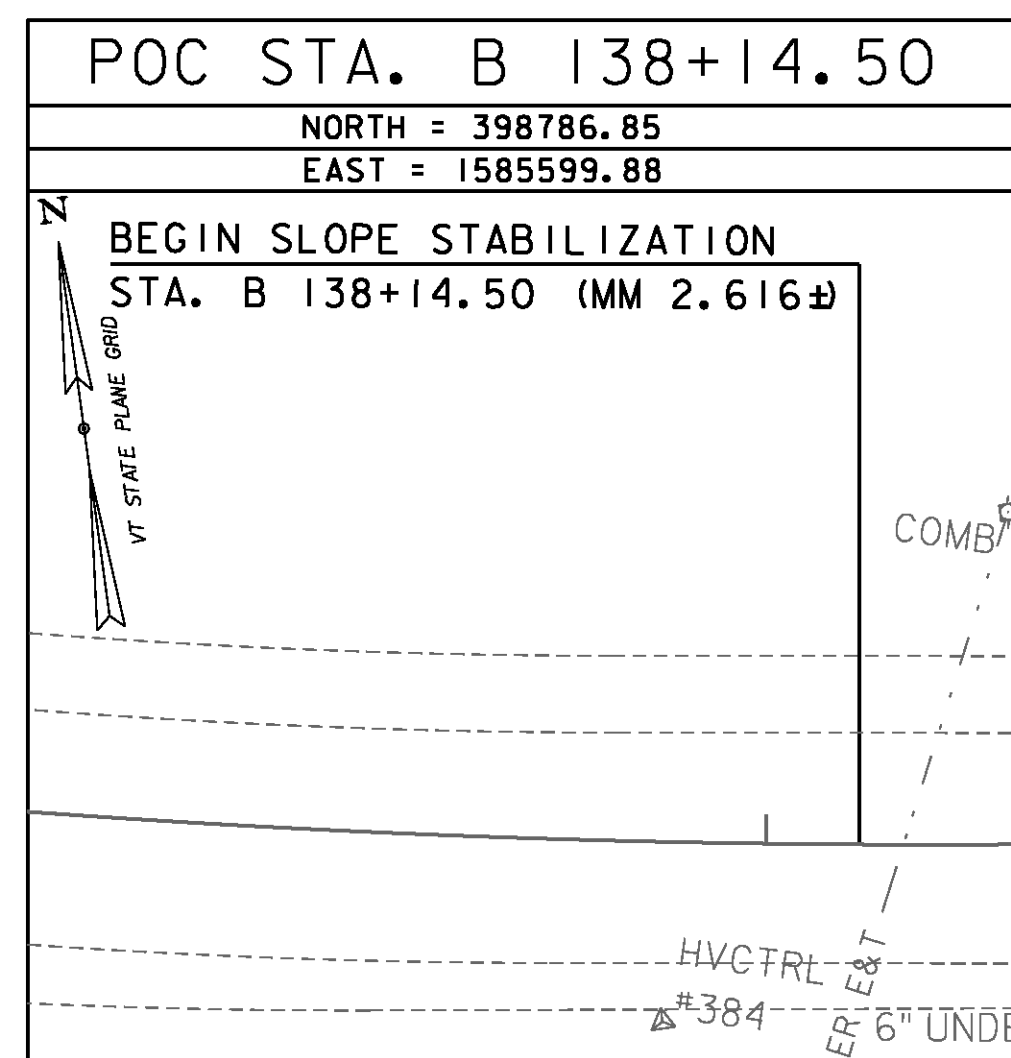
DESCRIBED BY VERMONT AGENCY OF TRANSPORTATION 1994 (CHR). GENERAL LOCATION, BRIDGEWATER, ABOUT 13.5 MI (21.7 KM) EAST OF RUTLAND, ABOUT 9.5 MI (15.3 KM) WEST OF WOODSTOCK. TO REACH FROM THE INTERSECTION OF U.S. ROUTE 4 AND VT ROUTE 100 SOUTH IN WEST BRIDGEWATER GO EAST ALONG U.S. ROUTE 4 FOR 2.7 MI (4.3 KM) TO THE WEST END OF THE U.S. ROUTE 4 BRIDGE OVER THE OTTAUQUECHEE RIVER AND THE MARK ON THE RIGHT IN THE TOP OF THE ABUTMENT AT THE SOUTHWEST CORNER OF THE BRIDGE. THE MARK IS 3.0 M (9.8 FT) EAST OF THE WEST END OF THE ABUTMENT, 0.2 M (0.7 FT) NORTH OF THE SOUTH FACE OF THE ABUTMENT, AND 4.3 M (14.1 FT) EAST OF A FIBERGLASS WITNESS POST.

TRAVERSE TIES



* SURVEY COMPLETED: JULY 7, 2014 BY VSE, T. CATTANEO-PC, T. COMSTOCK

ALIGNMENT TIES



DATUM
 VERTICAL NAVD 88
 HORIZONTAL NAD 83(2011)
 ADJUSTMENT LSQ

PROJECT NAME: KILLINGTON-WOODSTOCK
 PROJECT NUMBER: ER NH 020-2(38)
 FILE NAME: z13bi92+1_RFO38.dgn
 PROJECT LEADER: E. ATKINS
 DESIGNED BY: T. BIGELOW
 TIE SHEET
 PLOT DATE: 3/7/2016
 DRAWN BY: T. BIGELOW
 CHECKED BY: E. ATKINS
 SHEET 15 OF 146