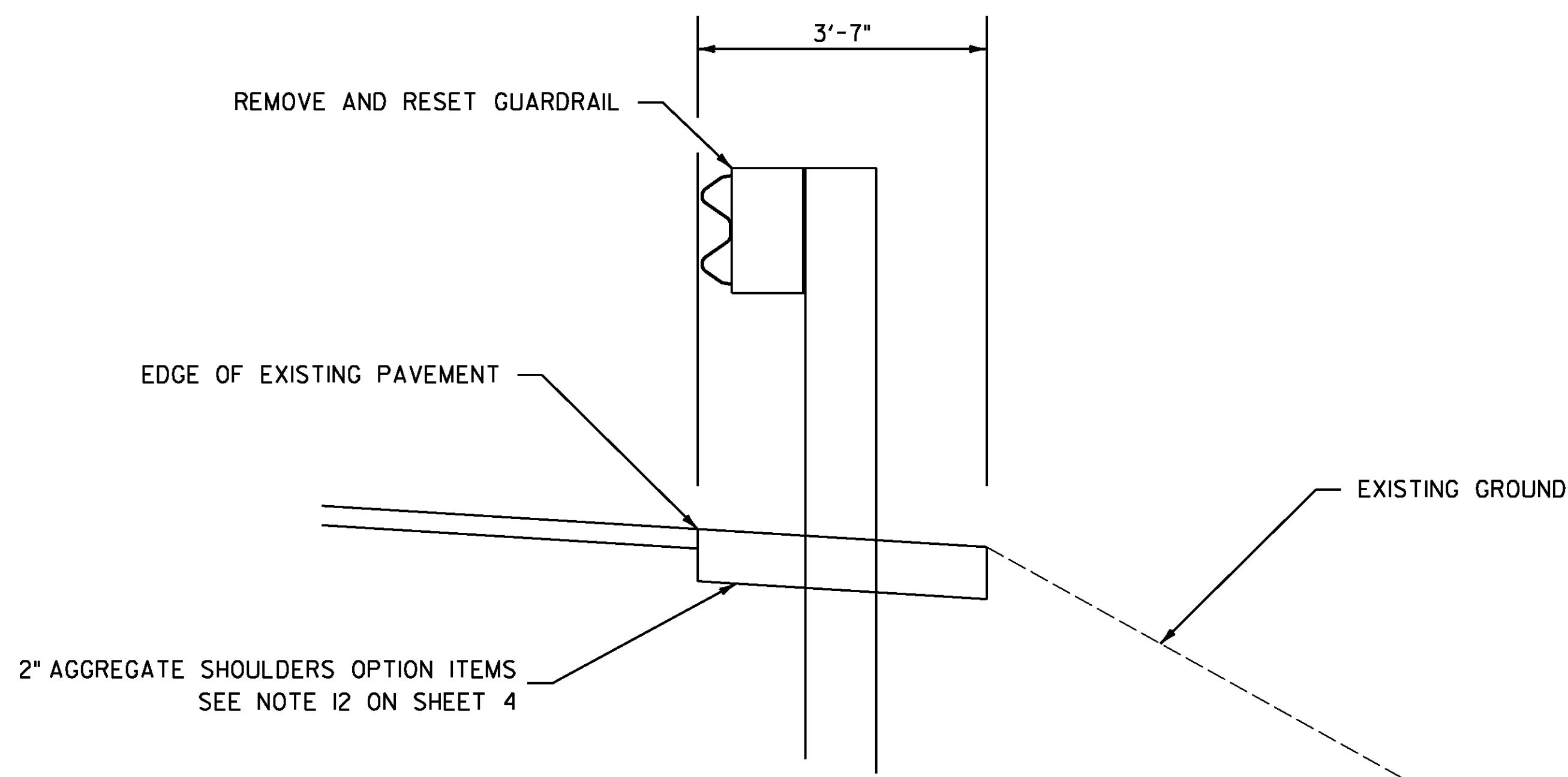
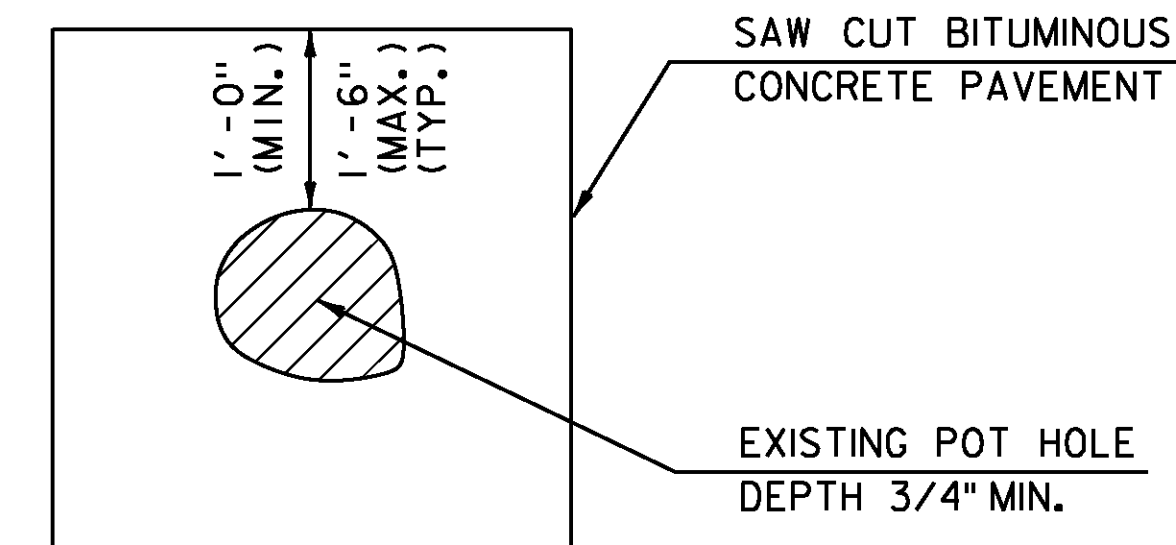


CURB REMOVAL AND STONE FILL BACKING DETAIL

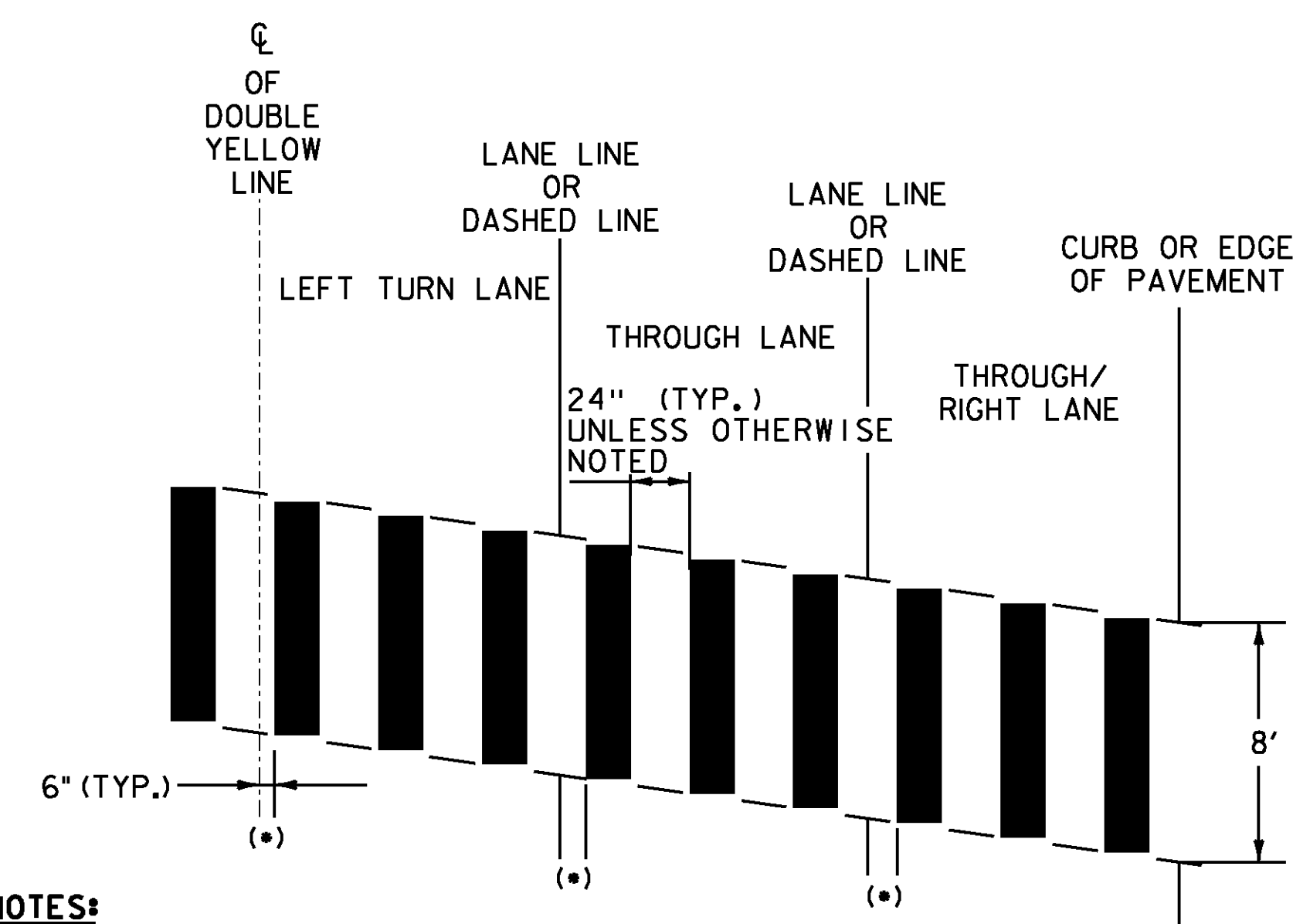


REMOVE AND RESET GUARDRAIL DETAIL



TYPICAL POT HOLE REPAIR

NOTE: EMULSIFIED ASPHALT SHALL BE APPLIED AT ALL PATCH INTERFACES AT A RATE OF 0.25 - 0.50 GAL/SY. THE COST ASSOCIATED WITH THE APPLICATION OF EMULSIFIED ASPHALT WILL BE PAID UNDER ITEM 900.680 SPECIAL PROVISION (BITUMINOUS CONCRETE PAVEMENT, SURFACE PREPARATION, TYPE 1).



NOTES:

1. THIS DETAIL IS CONFIGURED FOR AN 11 FOOT LANE.
2. MARK LIGHT STRING LINE ON PAVEMENT ACROSS ROADWAY (CURB TO CURB).
3. ESTABLISH THE CENTER LINE OF THE ROADWAY (DOUBLE YELLOW LINE OR LANE LINE).
4. BLOCKS ARE PARALLEL TO THE CENTERLINE (DOUBLE YELLOW LINE OR LANE LINE). (OFFSET BLOCKS VERTICALLY TO ACHIEVE REQUIRED SKEW).
5. ALWAYS START MEASURING FROM THE CENTERLINE OR LANE LINE RIGHT, WITH THE FLOW OF TRAFFIC.
6. PAINTED BLOCKS ARE 24" (TYP.).
- (*) 7. THIS DISTANCE WILL INCREASE TO 12" FOR A 12 FOOT LANE.

BLOCK PATTERN CROSSWALK DETAIL

SEE PLAN SHEET 45 FOR LOCATIONS.

PROJECT NAME: KILLINGTON-WOODSTOCK
PROJECT NUMBER: ER NH 020-2(38)

FILE NAME: z13bi92+typ.dgn
PROJECT LEADER: E. ATKINS
DESIGNED BY: T. BIGELOW
TYPICAL DETAILS SHEET 2

PLOT DATE: 3/7/2016
DRAWN BY: N. INGRISANI
CHECKED BY: E. ATKINS
SHEET 7 OF 146

NOT TO SCALE