

**SEED**  
 22+36.0 RT - 26+61.6 RT (RURAL)  
 3+52.7 RT - 6+50.00 RT (RURAL)

**SEED, WINTER RYE**  
 22+36.0 RT - 26+61.6 RT  
 206+50.0 LT - 207+22.0 LT  
 206+50.0 RT - 206+86.0 RT  
 3+52.7 RT - 6+50.00 RT

**FERTILIZER**  
 22+36.0 RT - 26+61.6 RT  
 206+50.0 LT - 207+22.0 LT  
 206+50.0 RT - 206+86.0 RT  
 3+52.7 RT - 6+50.00 RT

**AGRICULTURAL LIMESTONE**  
 22+36.0 RT - 26+61.6 RT  
 206+50.0 LT - 207+22.0 LT  
 206+50.0 RT - 206+86.0 RT  
 3+52.7 RT - 6+50.00 RT

**HAY MULCH**  
 22+36.0 RT - 26+61.6 RT  
 206+50.0 LT - 207+22.0 LT  
 206+50.0 RT - 206+86.0 RT  
 3+52.7 RT - 6+50.00 RT

**TOP SOIL**  
 22+36.0 RT - 26+61.6 RT  
 206+50.0 LT - 207+22.0 LT  
 206+50.0 RT - 206+86.0 RT  
 3+52.7 RT - 6+50.00 RT

**TEMPORARY EROSION MATTING**  
 3+00.0 - 6+50.0 RT  
 206+50 - 207+50 RT

**TEMPORARY STONE CHECK DAM, TYPE I**  
 2+88.9 RT - 2+99.2 RT  
 23+29.5 RT - 22+41.9 RT  
 206+74.0 RT - 206+87.0 RT

**INLET PROTECTION DEVICE, TYPE I**  
 207+50.0 LT-RT  
 26+50.0 RT

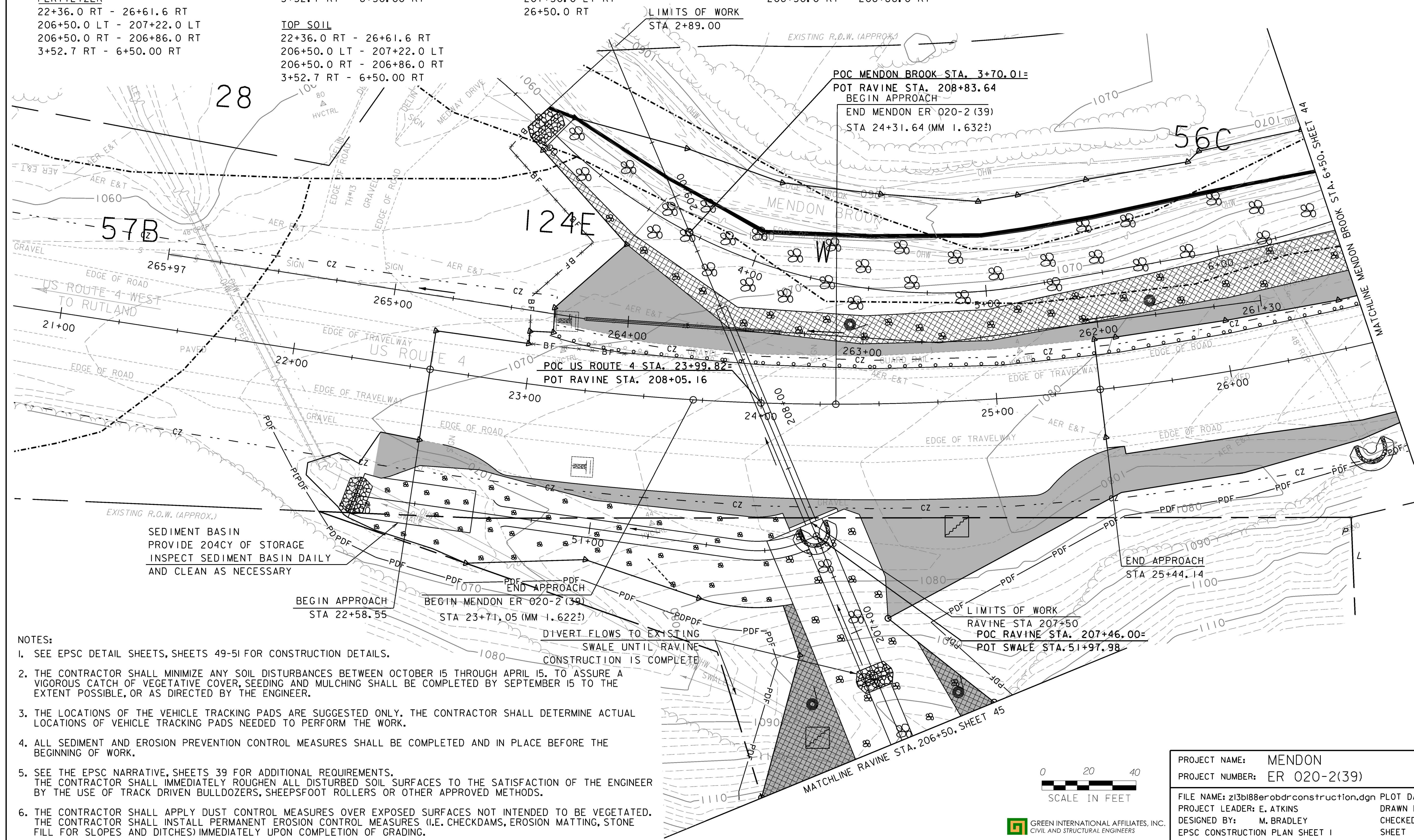
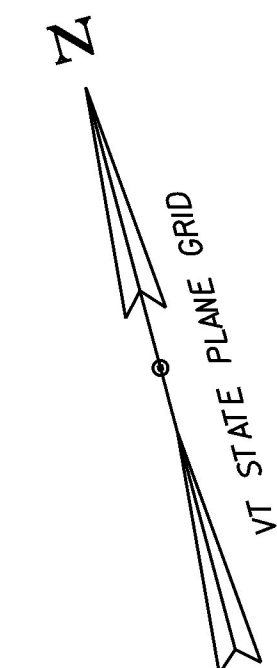
**BARRIER FENCE**  
 2+88.9 RT - 3+70.5 RT

**PROJECT DEMARCATION FENCE**  
 21+92.2 RT - 206+50.0 LT  
 206+50 RT - 206+61.6 LT

**SPECIAL PROVISION**  
 (NATIVE STEEP SLOPE SEED MIX)  
 206+50.0 LT - 207+22.0 LT  
 206+50.0 RT - 206+86.0 RT

**SPECIAL PROVISION**  
 (TEMPORARY WATER DIVERSION BARRIER)  
 2+88.9 LT - 6+50.0 LT

**SPECIAL PROVISION**  
 (TEMPORARY RELOCATION OF STREAM)  
 206+50.0 LT - 50+00.0 LT



SEDIMENT BASIN  
 PROVIDE 204CY OF STORAGE  
 INSPECT SEDIMENT BASIN DAILY  
 AND CLEAN AS NECESSARY

BEGIN APPROACH  
 STA 22+58.55

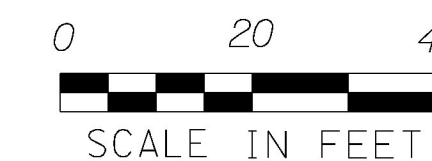
BEGIN MENDON ER 020-2 (39)  
 STA 23+71.05 (MM 1.622?)

DIVERT FLOWS TO EXISTING  
 SWALE UNTIL RAVINE  
 CONSTRUCTION IS COMPLETE

LIMITS OF WORK  
 RAVINE STA 207+50  
 POC RAVINE STA. 207+46.00=  
 POT SWALE STA. 51+97.98

**NOTES:**

1. SEE EPSC DETAIL SHEETS, SHEETS 49-51 FOR CONSTRUCTION DETAILS.
2. THE CONTRACTOR SHALL MINIMIZE ANY SOIL DISTURBANCES BETWEEN OCTOBER 15 THROUGH APRIL 15. TO ASSURE A VIGOROUS CATCH OF VEGETATIVE COVER, SEEDING AND MULCHING SHALL BE COMPLETED BY SEPTEMBER 15 TO THE EXTENT POSSIBLE, OR AS DIRECTED BY THE ENGINEER.
3. THE LOCATIONS OF THE VEHICLE TRACKING PADS ARE SUGGESTED ONLY. THE CONTRACTOR SHALL DETERMINE ACTUAL LOCATIONS OF VEHICLE TRACKING PADS NEEDED TO PERFORM THE WORK.
4. ALL SEDIMENT AND EROSION PREVENTION CONTROL MEASURES SHALL BE COMPLETED AND IN PLACE BEFORE THE BEGINNING OF WORK.
5. SEE THE EPSC NARRATIVE, SHEETS 39 FOR ADDITIONAL REQUIREMENTS. THE CONTRACTOR SHALL IMMEDIATELY ROUGHEN ALL DISTURBED SOIL SURFACES TO THE SATISFACTION OF THE ENGINEER BY THE USE OF TRACK DRIVEN BULLDOZERS, SHEEPSFOOT ROLLERS OR OTHER APPROVED METHODS.
6. THE CONTRACTOR SHALL APPLY DUST CONTROL MEASURES OVER EXPOSED SURFACES NOT INTENDED TO BE VEGETATED. THE CONTRACTOR SHALL INSTALL PERMANENT EROSION CONTROL MEASURES (I.E. CHECKDAMS, EROSION MATTING, STONE FILL FOR SLOPES AND DITCHES) IMMEDIATELY UPON COMPLETION OF GRADING.



GREEN INTERNATIONAL AFFILIATES, INC.  
 CIVIL AND STRUCTURAL ENGINEERS

PROJECT NAME: MENDON  
 PROJECT NUMBER: ER 020-2(39)

FILE NAME: z13b188erobdrconstruction.dgn PLOT DATE: 11/24/2015  
 PROJECT LEADER: E. ATKINS DRAWN BY: M. BRADLEY  
 DESIGNED BY: M. BRADLEY CHECKED BY: E. ATKINS  
 EPSC CONSTRUCTION PLAN SHEET I SHEET 43 OF 72