

**CLEARING AND GRUBBING, INCLUDING INDIVIDUAL TREES AND STUMPS**  
 3+00.0 LT-RT - 6+50.0 LT-RT  
 50+00.0 LT-RT - 51+93.0 LT-RT  
 206+50.0 LT-RT - 207+50.0 LT-RT

**COLD PLANING, BITUMINOUS CONCRETE**  
~~22+58.6 - 23+33.6~~  
~~24+69.1 - 25+44.1~~

**AGGREGATE SHOULDERS, IN PLACE**  
 22+68.7 RT - 25+51.5 RT

**STONE FILL, TYPE I**  
 50+00.0 LT-RT - 51+93.0 LT-RT

**STONE FILL, TYPE II**  
~~3+00.0 LT-RT - 6+50.0 LT-RT~~  
~~2+89.0~~

**STEEL BEAM GUARDRAIL, GALVANIZED/NESTED**  
~~23+44.7 LT - 24+44.7 LT~~

**REMOVE AND RESET GUARDRAIL**  
~~23+07.2 LT - 23+44.7 LT (MANUFACTURED TERMINAL END SECTION)~~  
~~24+44.7 LT - 26+61.6 LT~~

**REMOVAL AND DISPOSAL OF GUARDRAIL**  
~~23+44.7 LT - 24+44.7 LT~~  
~~23+07.0 LT - 29+57.0 LT~~

**TEMPORARY TRAFFIC BARRIER**  
 23+00.0 LT - 26+61.1 LT  
 - TO FACILITATE EMBANKMENT WORK

**4 INCH WHITE LINE**  
 TEMPORARY 4 INCH WHITE LINE  
~~22+58.0 LT - 25+44.1 LT (EDGE LINE)~~  
~~22+58.0 RT - 25+44.1 RT (EDGE LINE)~~

**4 INCH YELLOW LINE**  
 TEMPORARY 4 INCH YELLOW LINE  
~~22+58.0 - 25+44.1 (DOUBLE CENTER LINE)~~

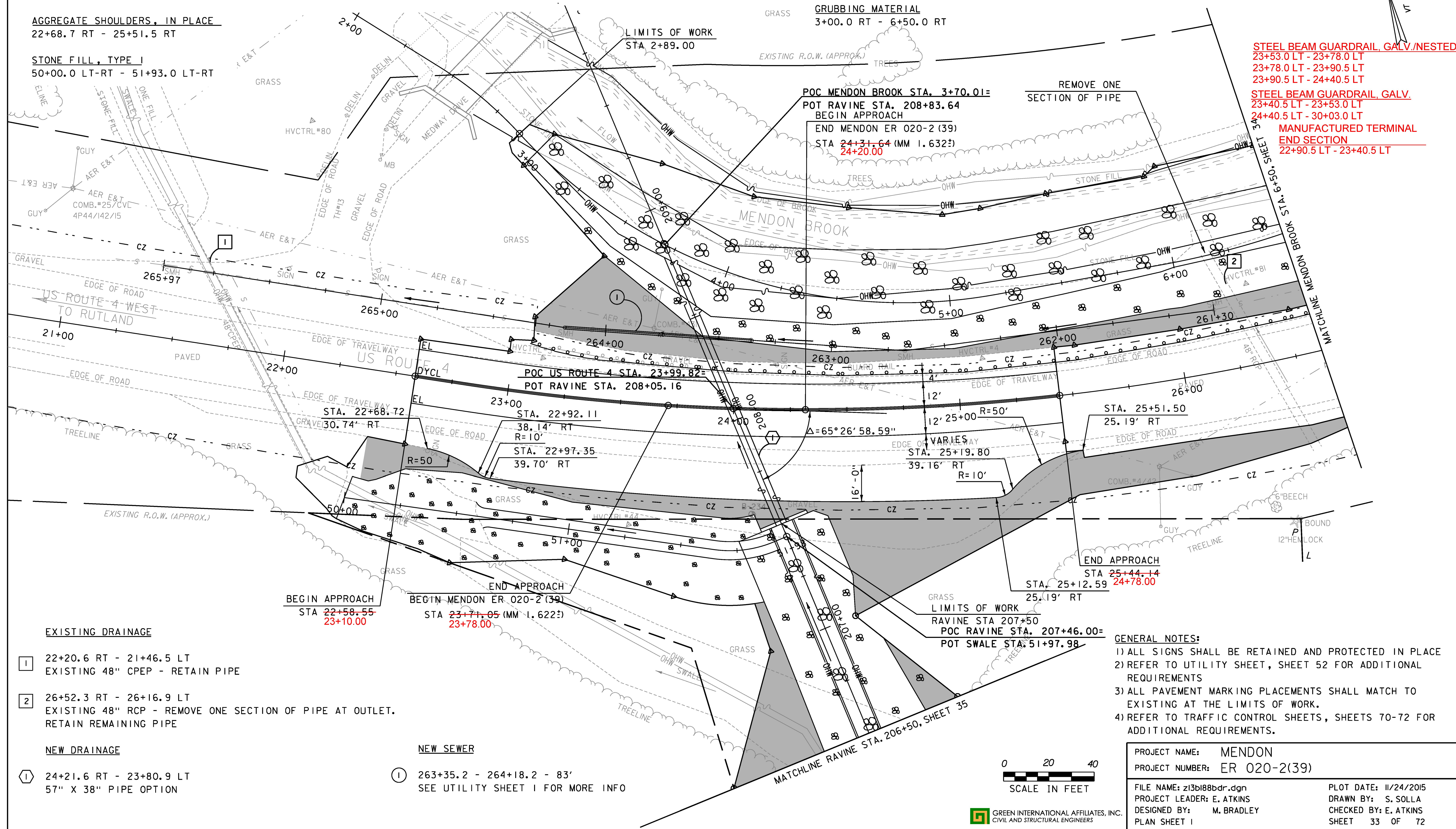
**SPECIAL PROVISION**  
 (STONE FILL, SLOPE ARMORING)  
 206+50.0 LT-RT - 207+50.0 LT-RT

**SPECIAL PROVISION**  
 (STONE FILL, CHANNEL ARMORING)  
 206+50.0 LT-RT - 207+50.0 LT-RT  
~~3+00.0 LT-RT - 6+50.0 LT-RT~~  
~~2+89.0~~

**STEEL BEAM GUARDRAIL, GALV./NESTED**  
~~23+53.0 LT - 23+78.0 LT~~  
~~23+78.0 LT - 23+90.5 LT~~  
~~23+90.5 LT - 24+40.5 LT~~

**STEEL BEAM GUARDRAIL, GALV.**  
~~23+40.5 LT - 23+53.0 LT~~  
~~24+40.5 LT - 30+03.0 LT~~

**MANUFACTURED TERMINAL END SECTION**  
~~22+90.5 LT - 23+40.5 LT~~



- EXISTING DRAINAGE**
- 1 22+20.6 RT - 21+46.5 LT  
EXISTING 48" CPEP - RETAIN PIPE
  - 2 26+52.3 RT - 26+16.9 LT  
EXISTING 48" RCP - REMOVE ONE SECTION OF PIPE AT OUTLET.  
RETAIN REMAINING PIPE
- NEW DRAINAGE**
- 1 24+21.6 RT - 23+80.9 LT  
57" X 38" PIPE OPTION

- NEW SEWER**
- 1 263+35.2 - 264+18.2 - 83'  
SEE UTILITY SHEET I FOR MORE INFO

- GENERAL NOTES:**
- 1) ALL SIGNS SHALL BE RETAINED AND PROTECTED IN PLACE
  - 2) REFER TO UTILITY SHEET, SHEET 52 FOR ADDITIONAL REQUIREMENTS
  - 3) ALL PAVEMENT MARKING PLACEMENTS SHALL MATCH TO EXISTING AT THE LIMITS OF WORK.
  - 4) REFER TO TRAFFIC CONTROL SHEETS, SHEETS 70-72 FOR ADDITIONAL REQUIREMENTS.

PROJECT NAME:	MENDON	FILE NAME:	z13bi88bdr.dgn	PLOT DATE:	11/24/2015
PROJECT NUMBER:	ER 020-2(39)	PROJECT LEADER:	E. ATKINS	DRAWN BY:	S. SOLLA
		DESIGNED BY:	M. BRADLEY	CHECKED BY:	E. ATKINS
		PLAN SHEET I			SHEET 33 OF 72

GREEN INTERNATIONAL AFFILIATES, INC.  
 CIVIL AND STRUCTURAL ENGINEERS