

CLEARING AND GRUBBING, INCLUDING INDIVIDUAL TREES AND SHRUBS
200+42.0 LT-RT - 206+50.0 LT-RT

STONE FILL, TYPE 11
201+55.0 LT - 203+50.0 LT
201+60.0 RT - 204+50.0 RT

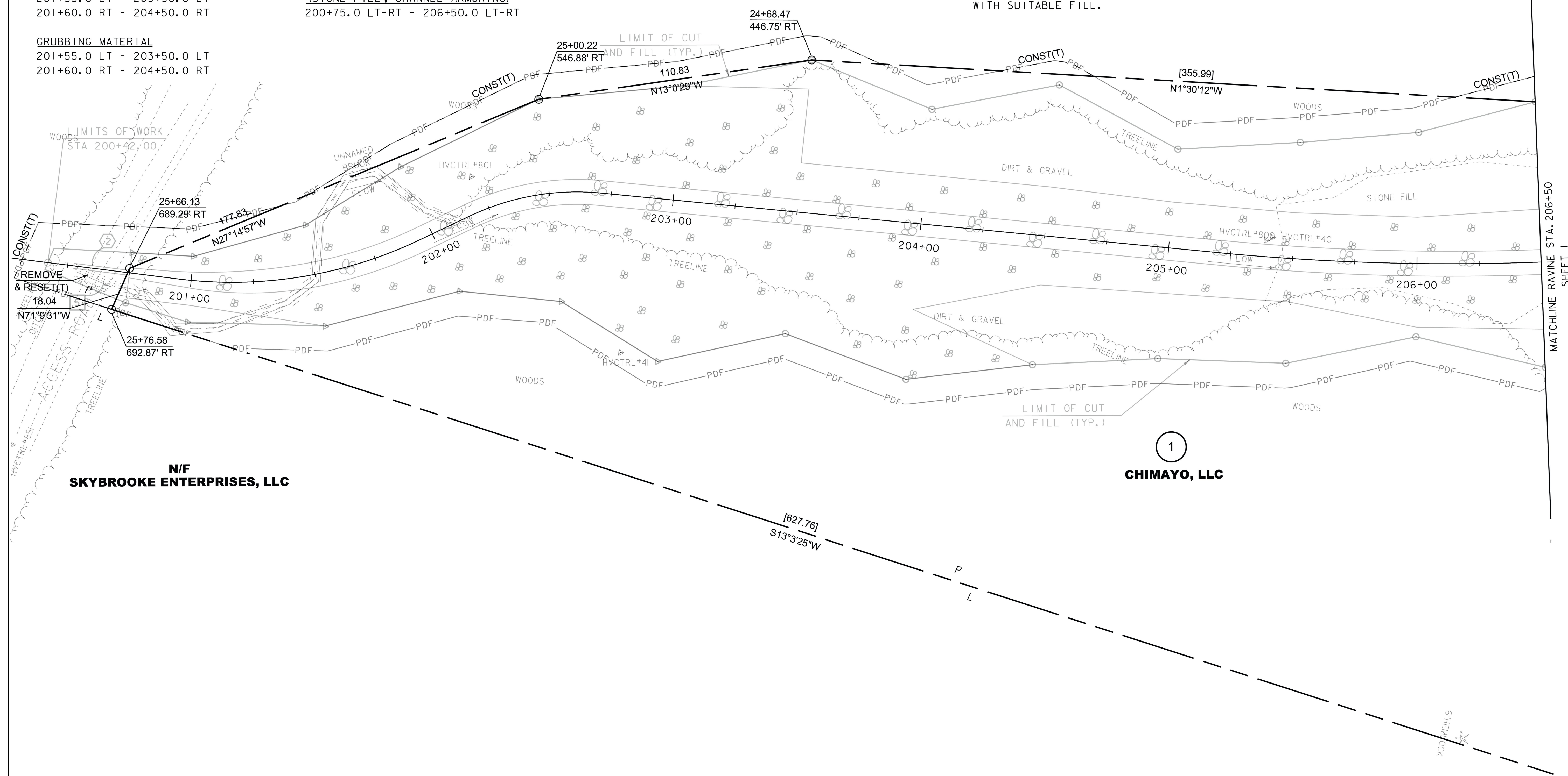
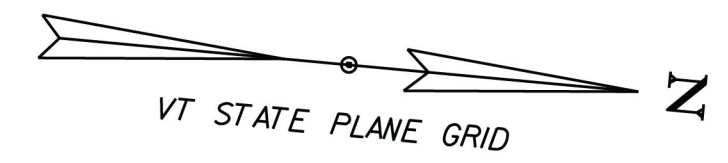
GRUBBING MATERIAL
201+55.0 LT - 203+50.0 LT
201+60.0 RT - 204+50.0 RT

SPECIAL PROVISION (STONE FILL, SLOPE ARMORING)
200+75.0 LT-RT - 206+50.0 LT-RT

SPECIAL PROVISION (STONE FILL, CHANNEL ARMORING)
200+75.0 LT-RT - 206+50.0 LT-RT

EXISTING DRAINAGE
⑤ 200+52.2 - 200+72.8 RT
24" CPEP - RELAYING PIPE CULVERTS, AND EXTEND

NEW DRAINAGE
② 200+52.4 - 200+75.0
24" CPEP - RELAYING PIPE CULVERTS, AND EXTEND 24" CPEP 1.6'
INVERT IN: 1328.14, INVERT OUT: 1327.60
*OLD PIPE LOCATION AND THE NEW PIPE SHALL BE BACKFILLED WITH SUITABLE FILL.



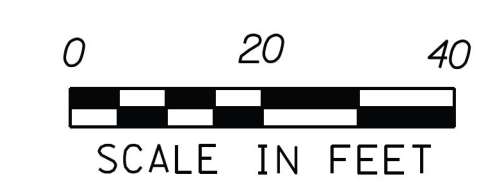
MATCHLINE RAVINE STA. 206+50 SHEET 1

N/F SKYBROOKE ENTERPRISES, LLC

1 CHIMAYO, LLC

LINES SHOWN ON THIS PLAN AS EXISTING PROPERTY LINES P/L ARE BELIEVED TO BE ACCURATE BUT SHOULD NOT BE RELIED UPON FOR PURPOSES UNRELATED TO THE STATE OF VERMONT'S ACQUISITION OF LAND AND RIGHTS FOR THIS PROJECT.

FOR R.O.W. USE ONLY



PROJECT NAME: MENDON	PLOT DATE: 11/13/2015
PROJECT NUMBER: ER 020-2(39)	DRAWN BY: A. EGIZI
FILE NAME: z13bi88rowbdr.dgn	CHECKED BY: R. CLOUTTIER
PROJECT LEADER: E. ATKINS	SHEET 32 OF 72
DESIGNED BY: GREEN	
R.O.W. PLAN SHEET 3	