

GPS/NGS CONTROL POINTS

VTGS DISK B94008

PID AA8755
 N = 419737.42
 E = 1531026.68
 ELEV = 1166.28

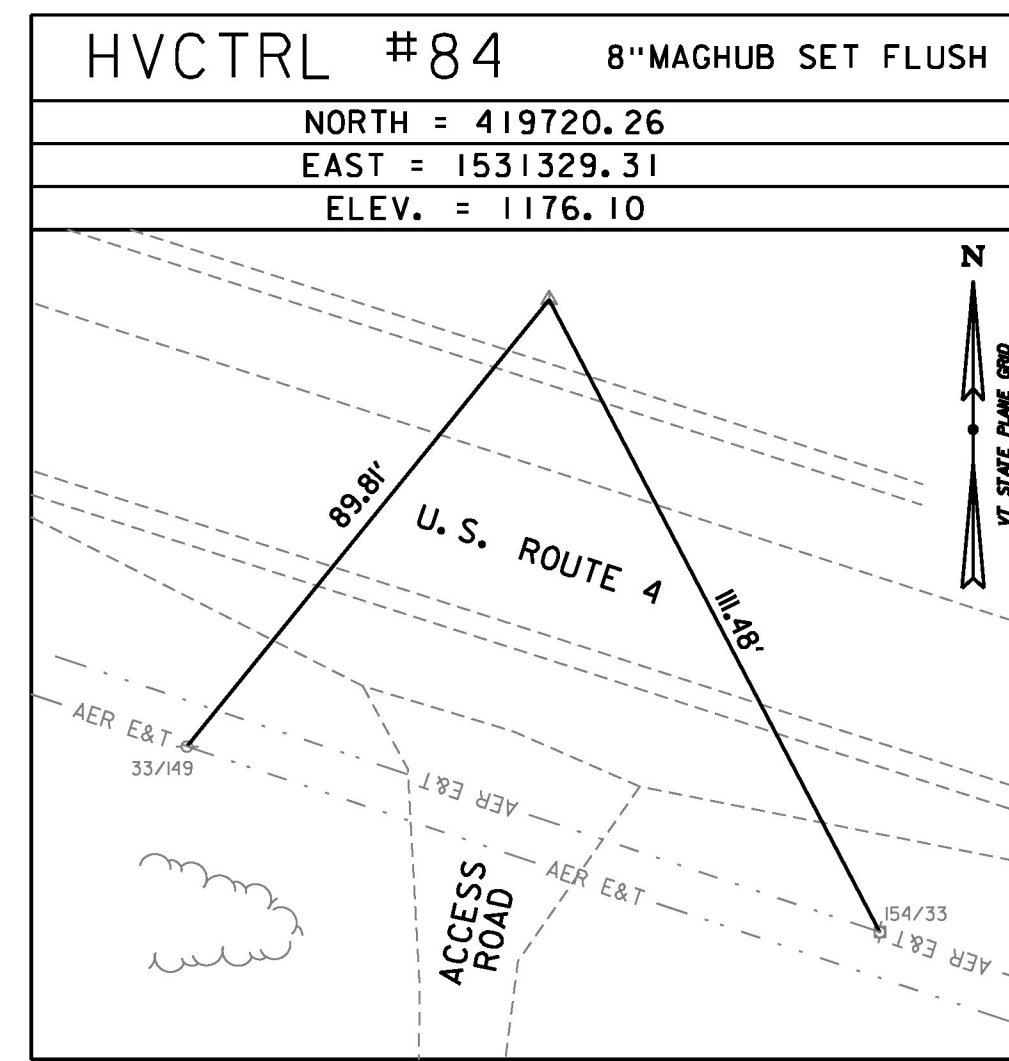
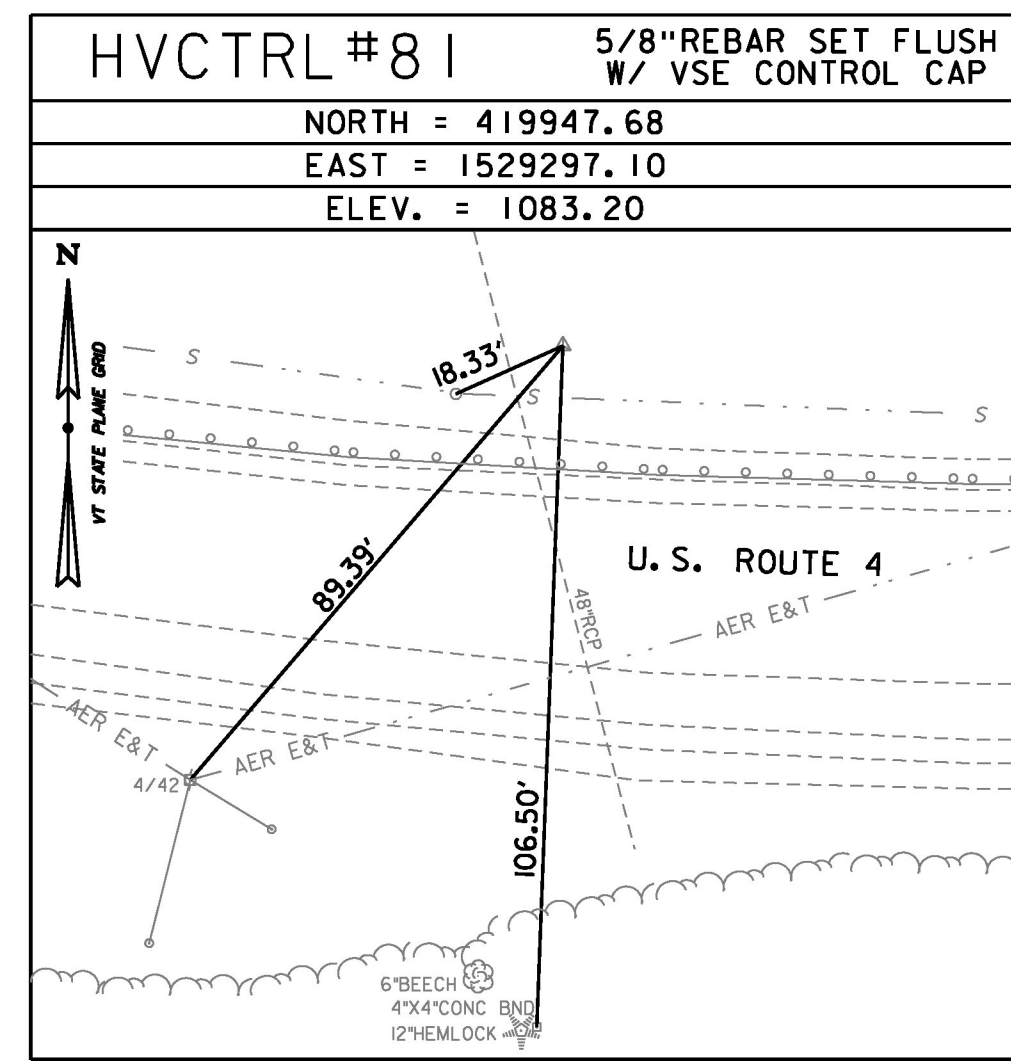
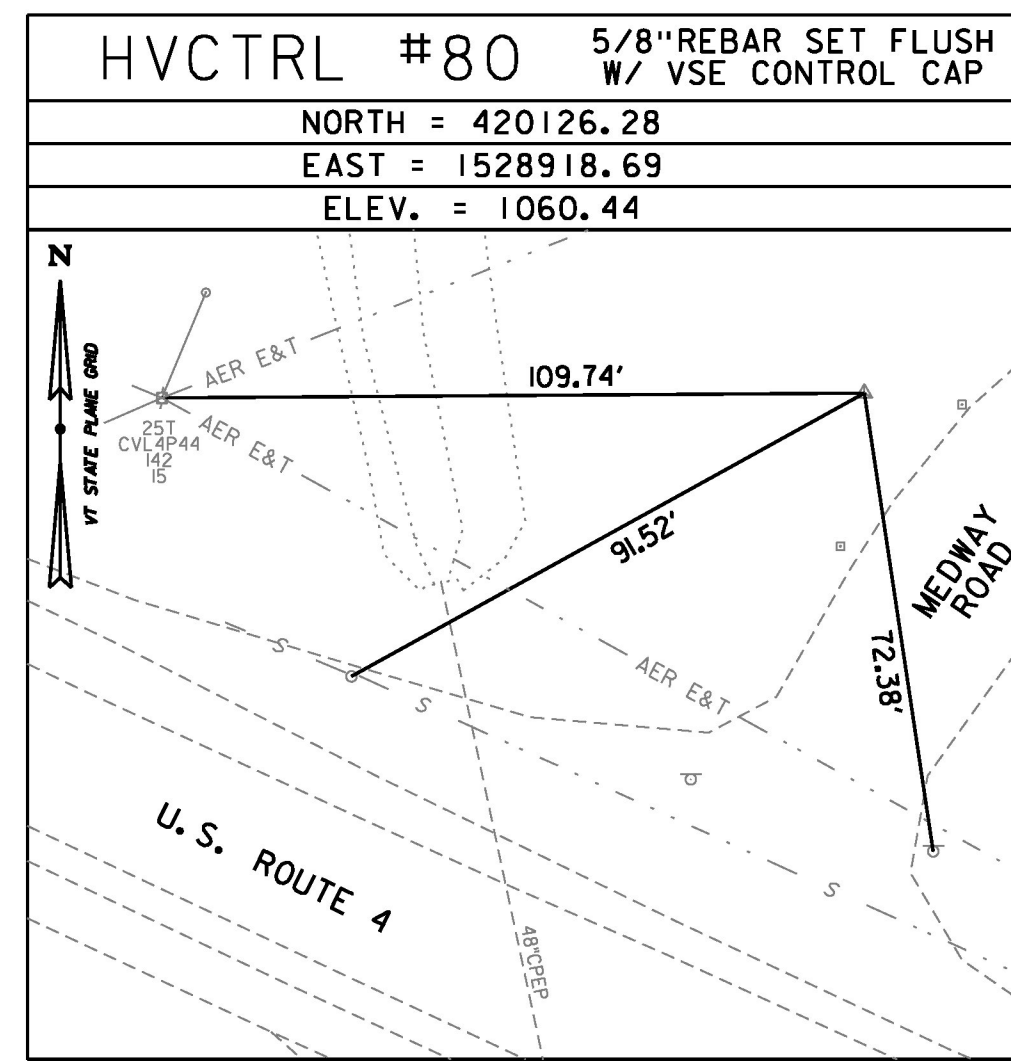
GENERAL LOCATION, MENDON, ABOUT 4.5 MI (7.2 KM) EAST OF RUTLAND. TO REACH FROM THE INTERSECTION OF U.S. ROUTE 7 AND U.S. ROUTE 4 EAST (WOODSTOCK AVENUE) IN RUTLAND, GO EAST ALONG U.S. ROUTE 4 FOR 4.4 MI (7.1 KM) TO THE MARK ON THE RIGHT AT THE EAST END OF A GRAVEL PULLOUT, IN THE TOP OF A 30-CM DIAMETER CONCRETE MONUMENT ABOUT 5-CM BELOW GROUND SURFACE. THE MARK IS 6.8 M (22.3 FT) SOUTH OF AND ABOUT 0.2 M (0.7 FT) LOWER THAN THE SOUTH EDGE OF PAVEMENT OF U.S. ROUTE 4, 6.3 M (20.7 FT) WEST OF POLE NO. 78/148 (WITH TELEPHONE BOXES), AND 0.4 M (1.3 FT) NORTH OF A FIBERGLASS WITNESS POST.

VTGS DISK B94009

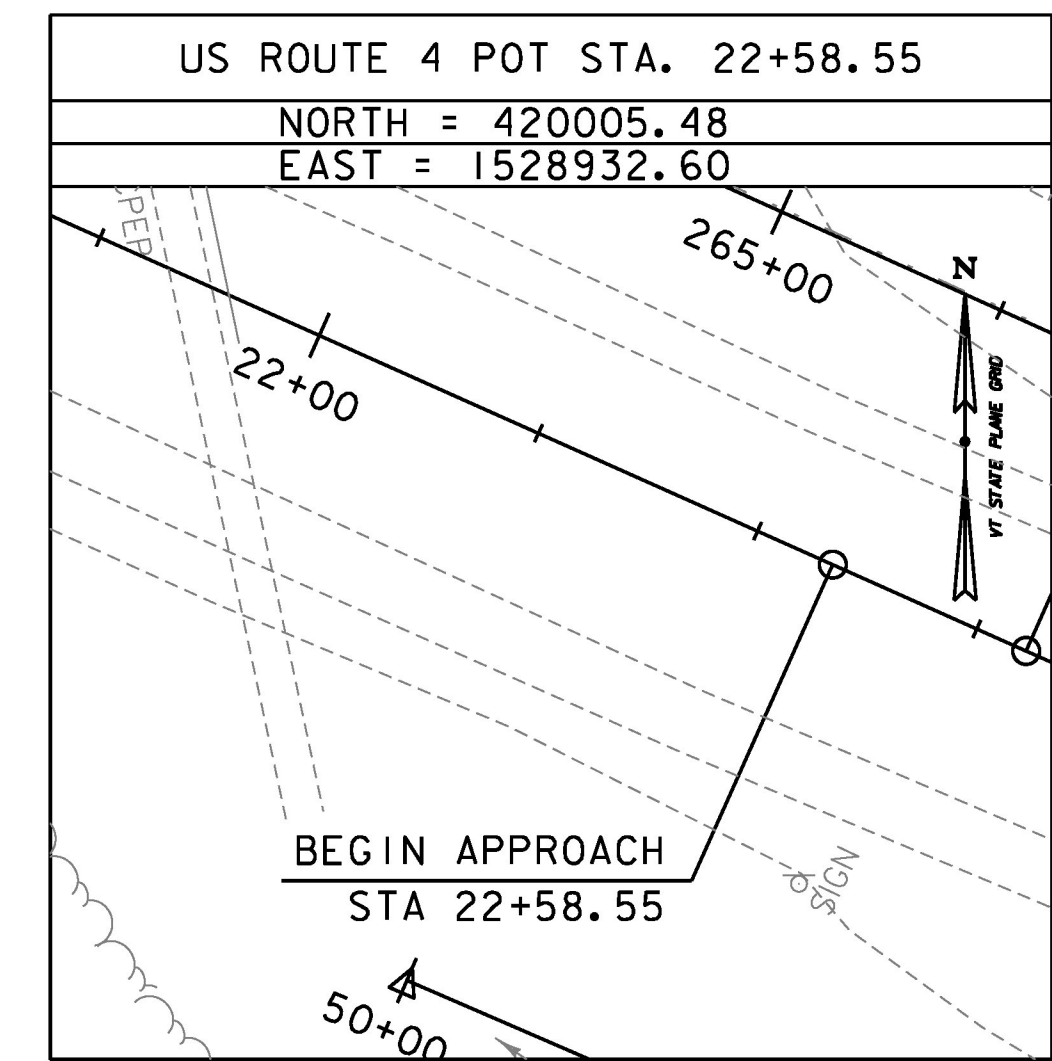
PID AA8756
 N = 418824.31
 E = 1533031.90
 ELEV = 1245.65

GENERAL LOCATION, MENDON, ABOUT 5 MI (8.0 KM) EAST OF RUTLAND. TO REACH FROM THE INTERSECTION OF U.S. ROUTE 7 AND U.S. ROUTE 4 EAST (WOODSTOCK AVENUE) IN RUTLAND, GO EAST ALONG U.S. ROUTE 4 FOR 4.8 MI (7.7 KM) TO THE EAST END OF THE U.S. ROUTE 4 BRIDGE OVER MENDON BROOK AND THE MARK ON THE RIGHT IN THE TOP OF THE ABUTMENT AT THE SOUTHEAST CORNER OF THE BRIDGE.

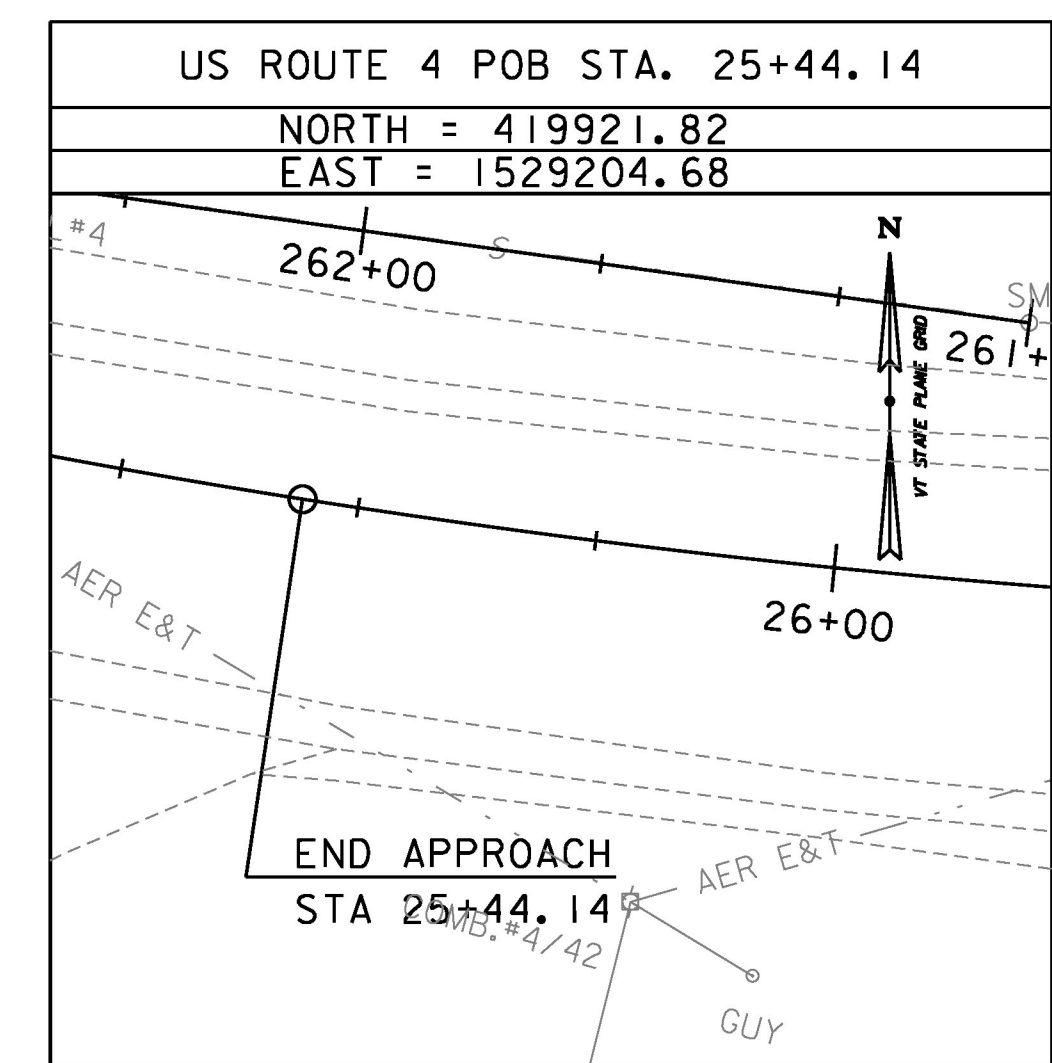
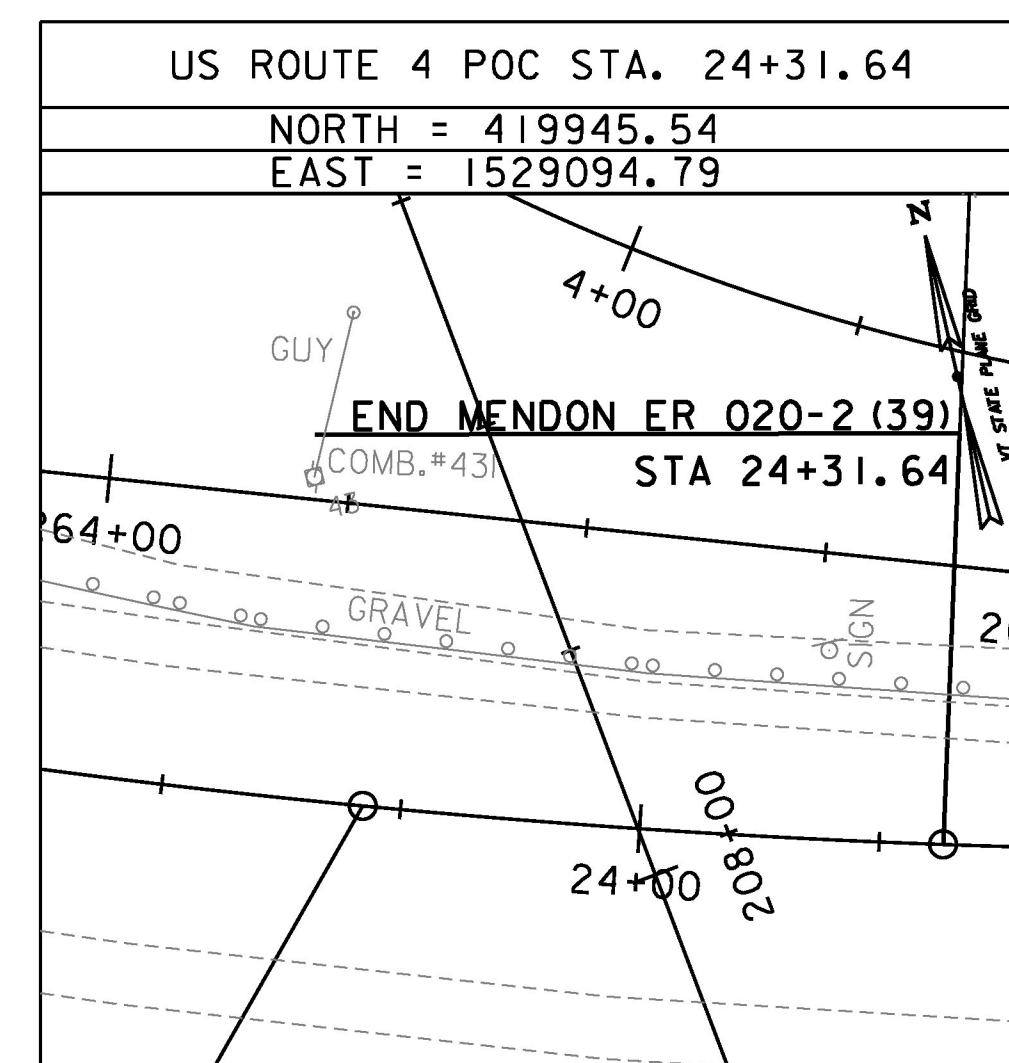
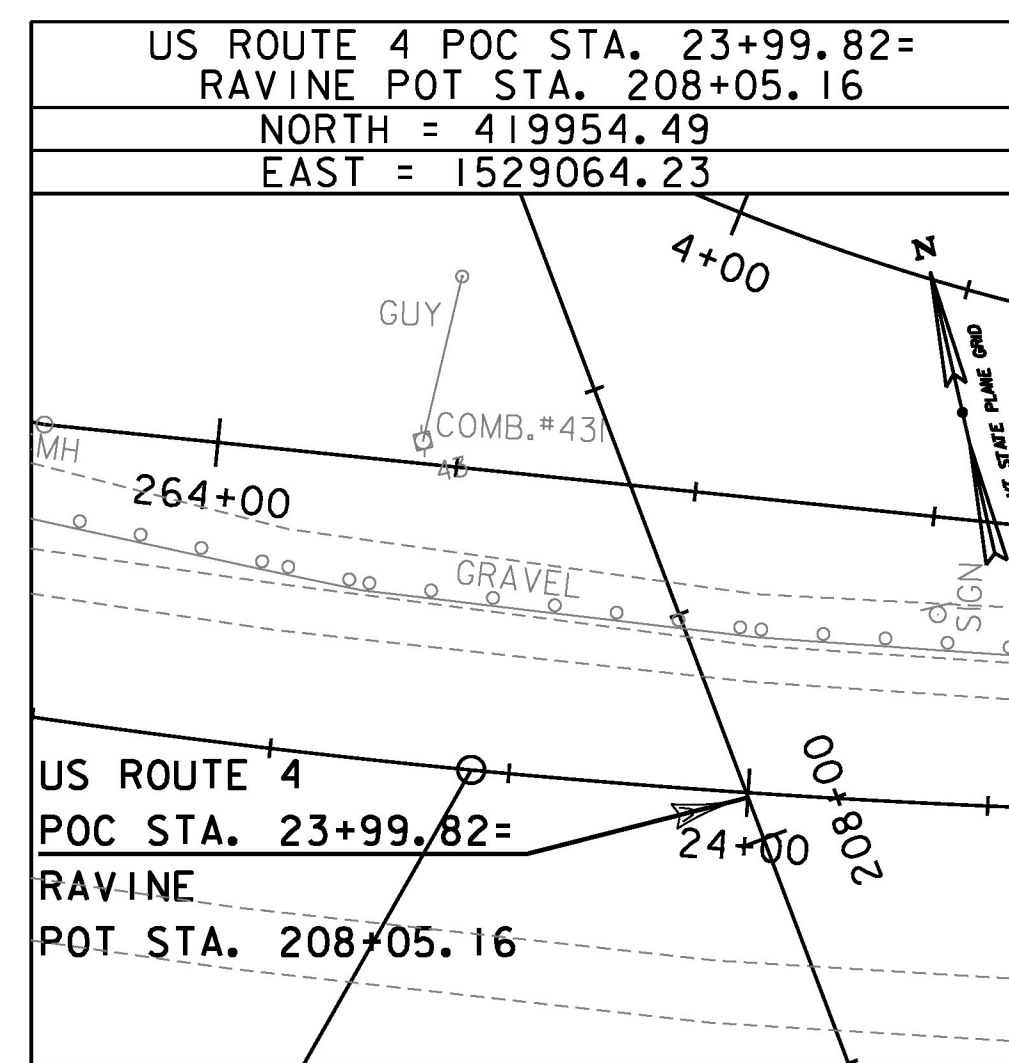
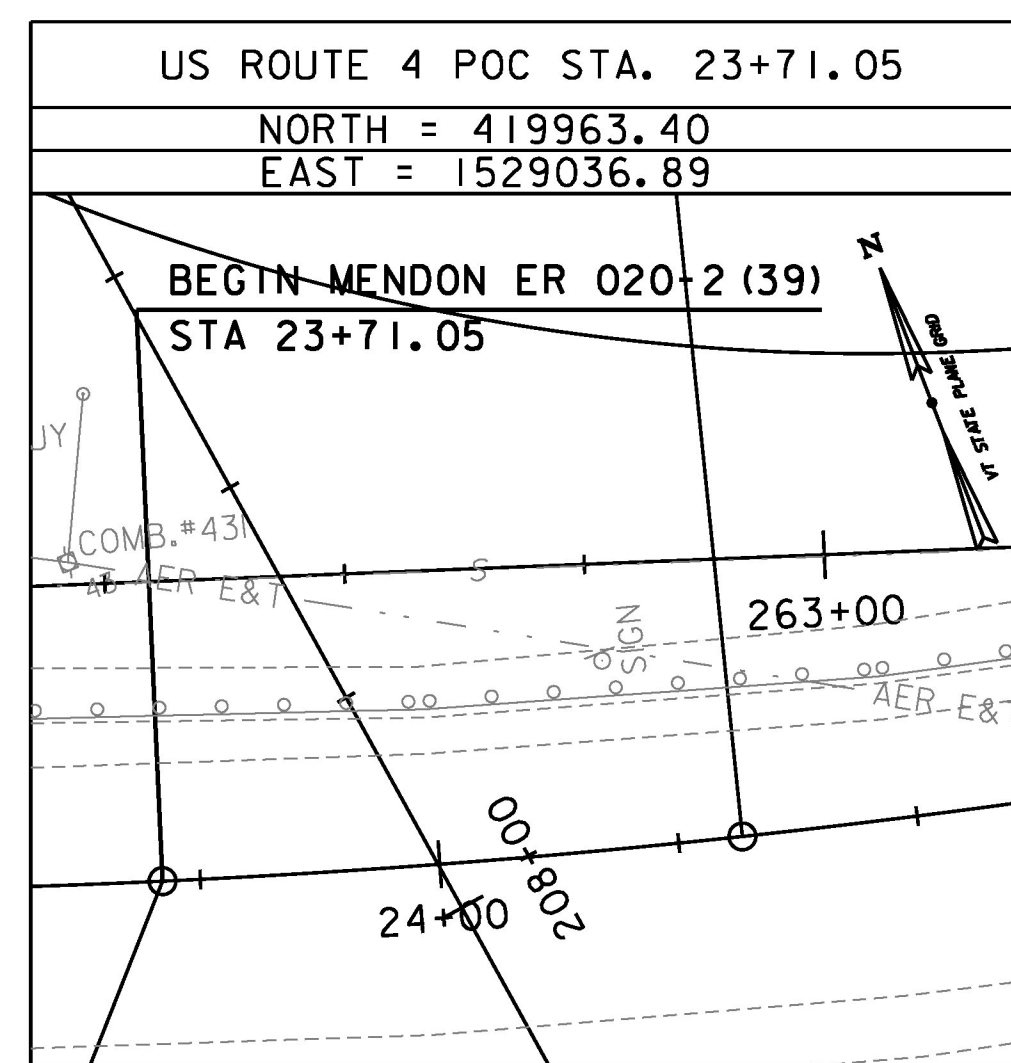
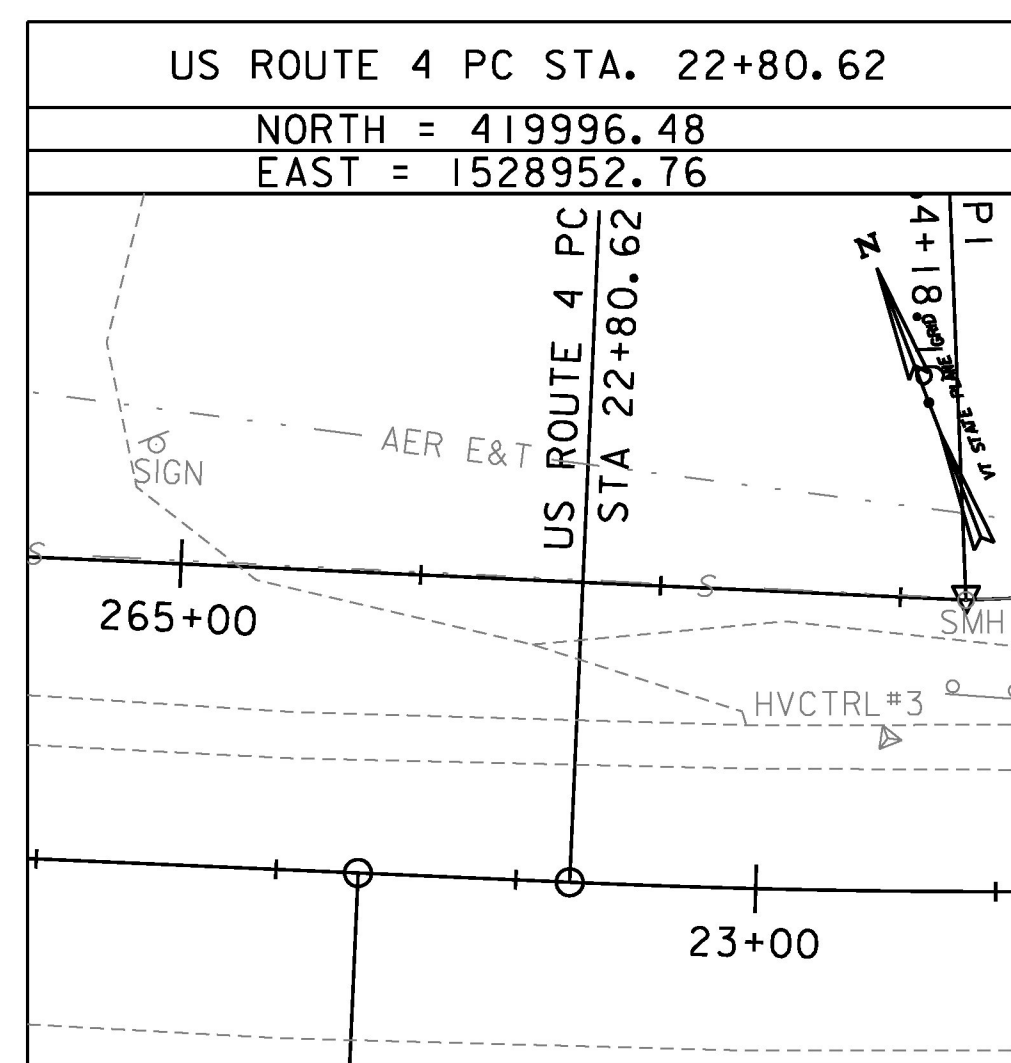
TRAVERSE TIES



ALIGNMENT TIES



ALIGNMENT TIES



| | |
|------------|------------------|
| DATUM | |
| VERTICAL | NAVD 88 FT |
| HORIZONTAL | NAD 83(2011) sFT |
| ADJUSTMENT | LSO |

PROJECT NAME: MENDON
 PROJECT NUMBER: ER 020-2(39)

FILE NAME: z13bi88t1.dgn
 PROJECT LEADER: E. ATKINS
 DESIGNED BY: C. MORIN
 TIE SHEET 1

PLOT DATE: 11/13/2015
 DRAWN BY: C. MORIN
 CHECKED BY: E. ATKINS
 SHEET 16 OF 72

NOT TO SCALE

