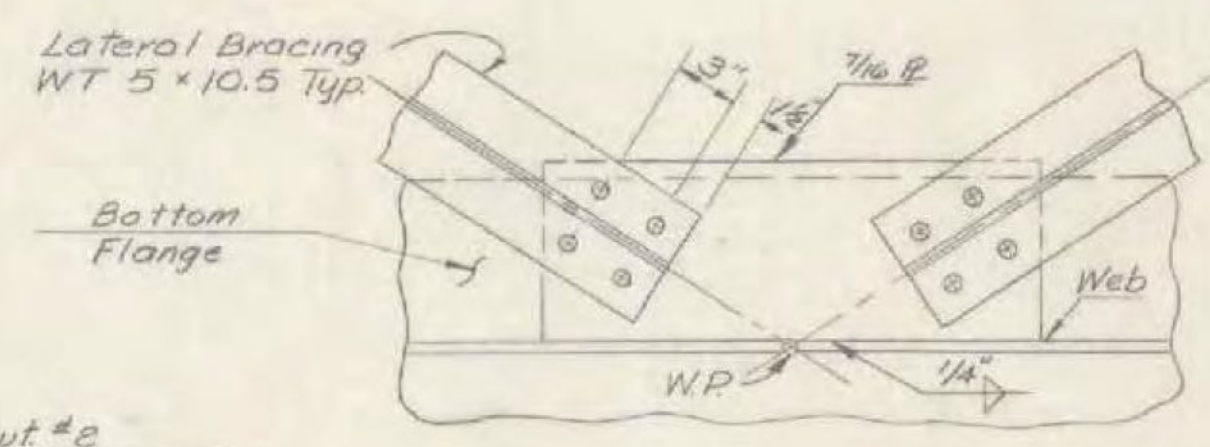
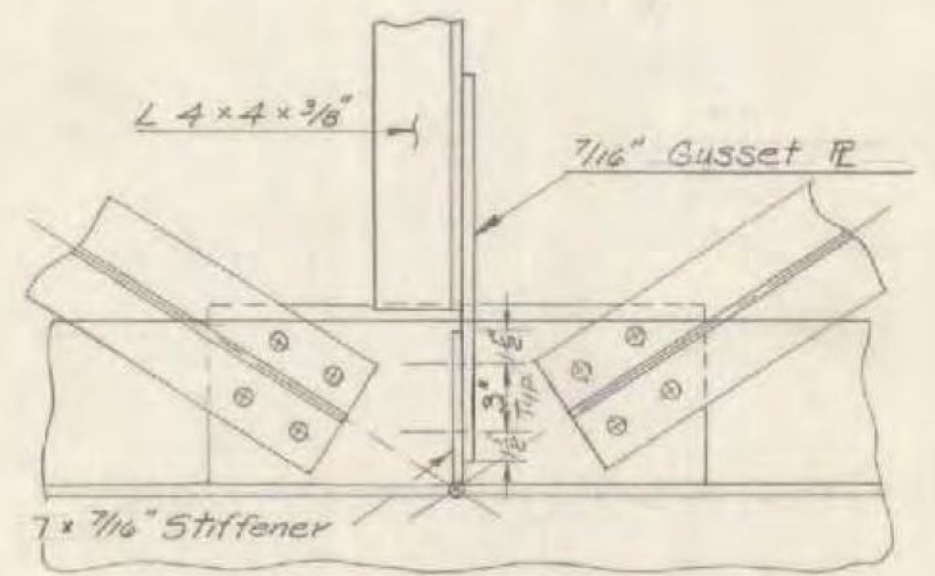


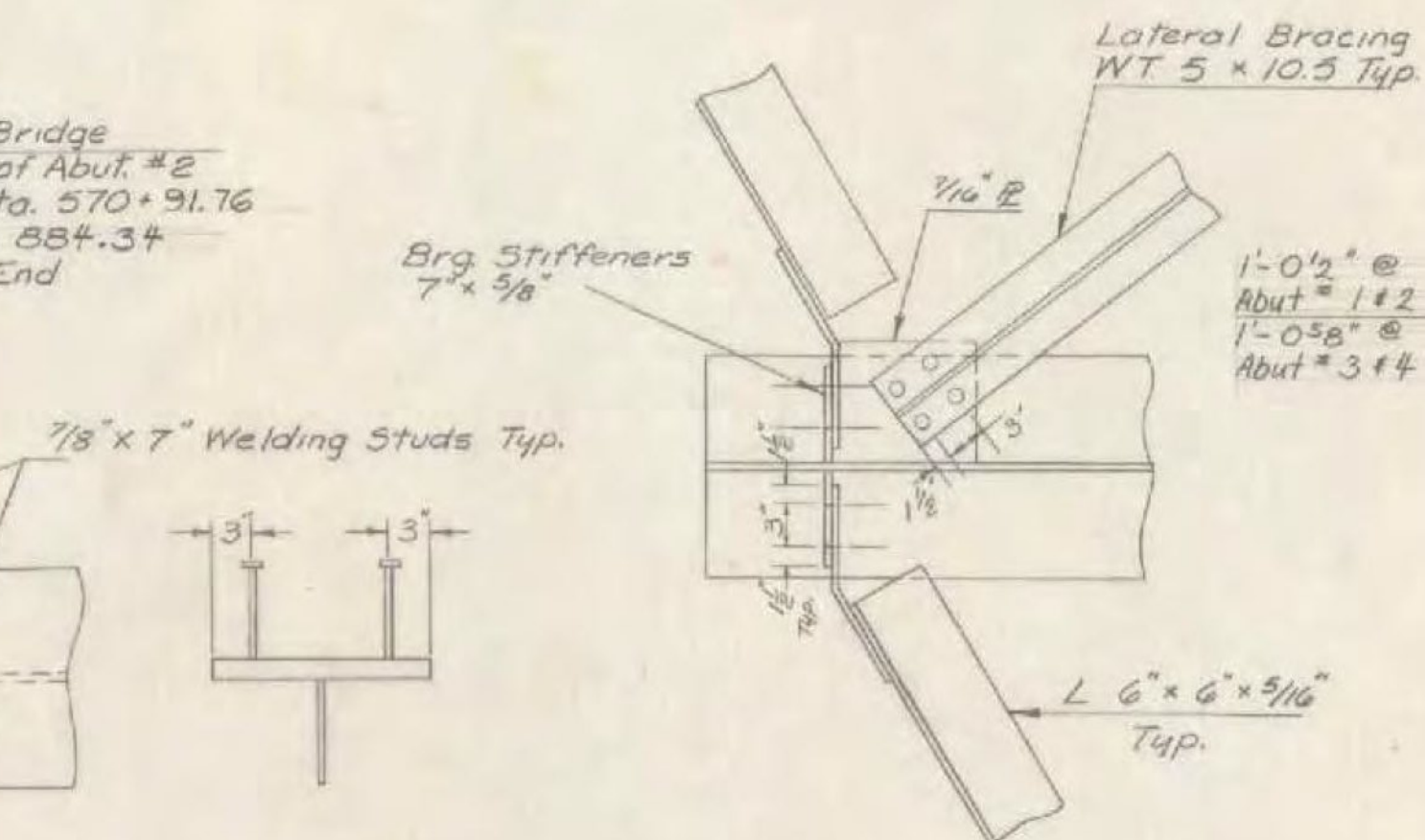
**SOUTHBOUND FRAMING PLAN**  
Scale 1"=10'



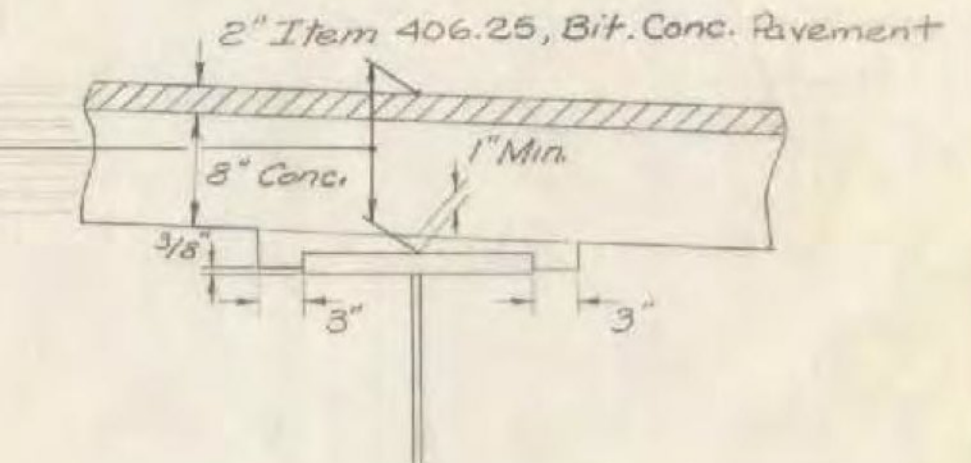
**DETAIL A**  
Scale 1/2"=1'-0"



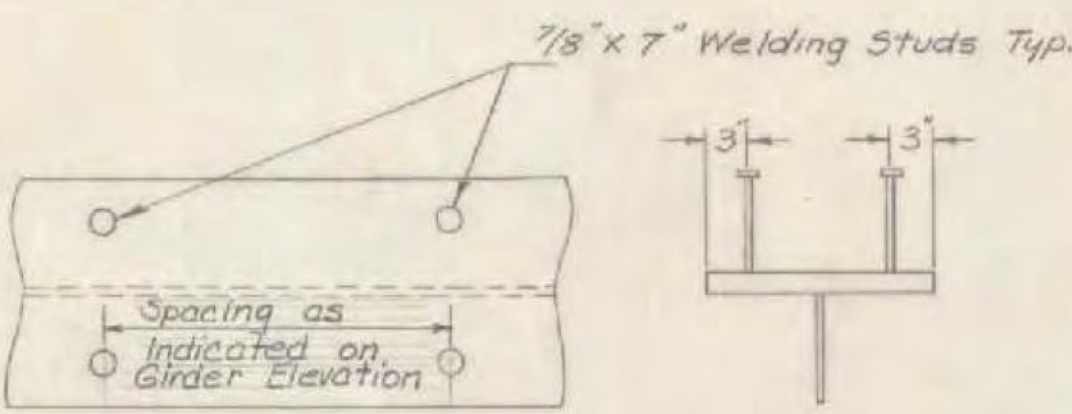
**DETAIL B**  
Scale 1/2"=1'-0"



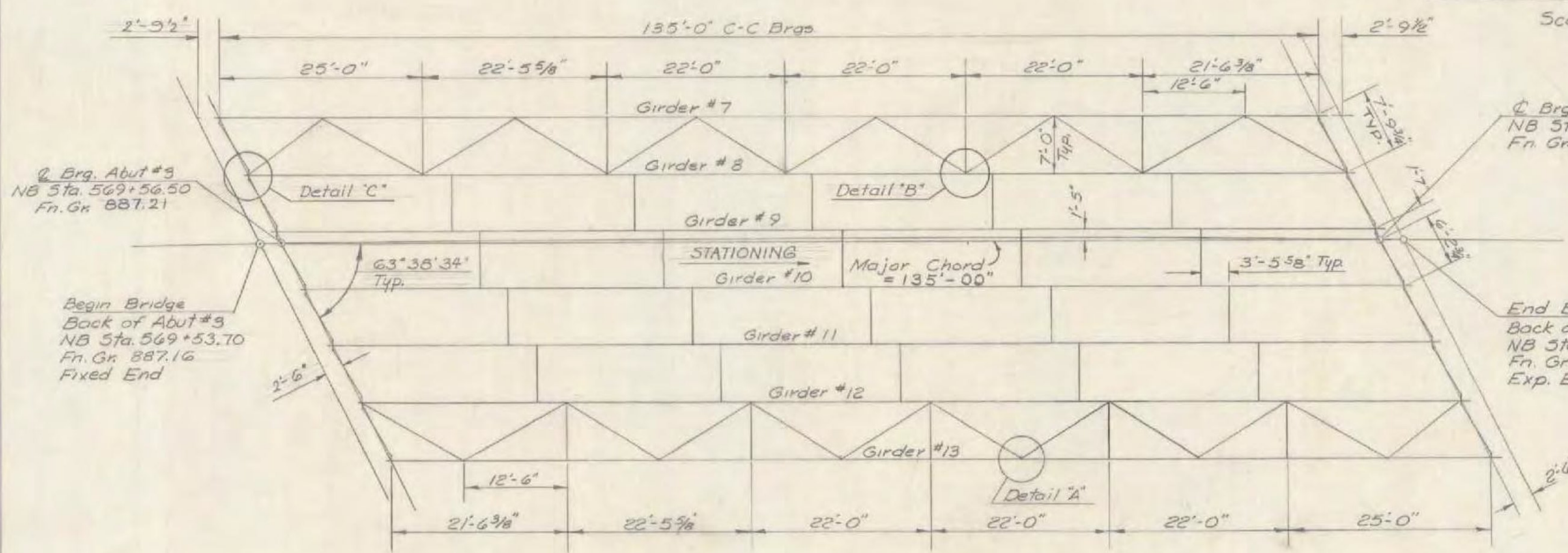
**DETAIL C**  
Scale 1"=1'-0"



**GIRDER HAUNCH DETAILS**  
Scale 1"=1'-0"



**SHEAR CONNECTOR DETAILS**  
Scale 1"=1'-0"



**NORTHBOUND FRAMING PLAN**  
Scale 1"=10'

- Notes**
- All welding shall conform to the Specifications for Welded Highway and Railway Bridges, AWS D20-69 and its latest revisions.
  - The superstructure shall be painted in accordance with Section 513 - Painting of the 1972 State of Vermont, Department of Highways, Standard Specifications for Highway and Bridge Construction. Payment for painting will be included in the lump sum bid for Item 513.20, Painting New Structure. All structural steel shall be cleaned prior to shop painting using any method specified in Section 513.03, Surface Preparation.

**STATE OF VERMONT**  
DEPARTMENT OF HIGHWAYS

PROJECT BENNINGTON  
TOWN OF BENNINGTON  
ROAD NO. ART US 7 STA. 570+23  
ARTERIAL US 7 OVER RAMP L  
FRAMING PLAN

SCALE AS SHOWN  
SECTION SUPERVISOR: E.W. Bolkow BETA  
E. WAIBEL, OUELLETTE  
DRAWN BY: GARCIA CHECKED BY: E. WAIBEL  
PROJECT NO. DP-BE 019-1(12)  
SHEET 202 OF 480 BR-5505

(RE - ADVERTISED)  
BENNINGTON - MT TABOR  
BF BPNT (16)  
PROJECT BRIDGE 16N&S  
SHEET 16 OF 23  
FOR INFORMATION ONLY