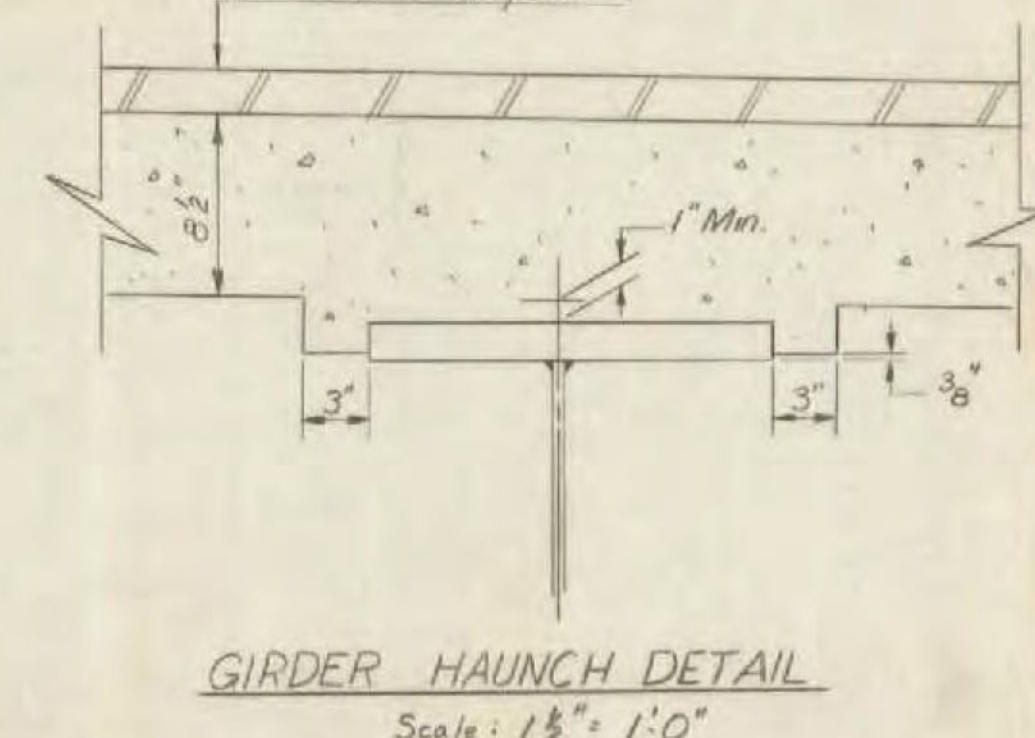
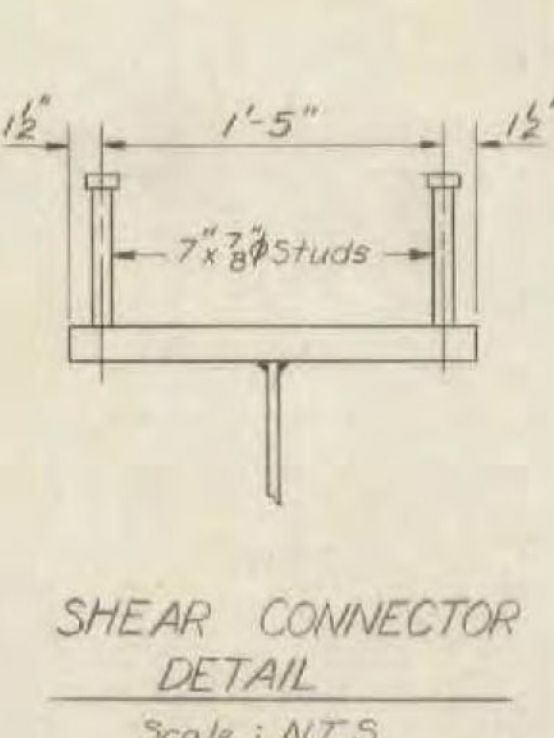
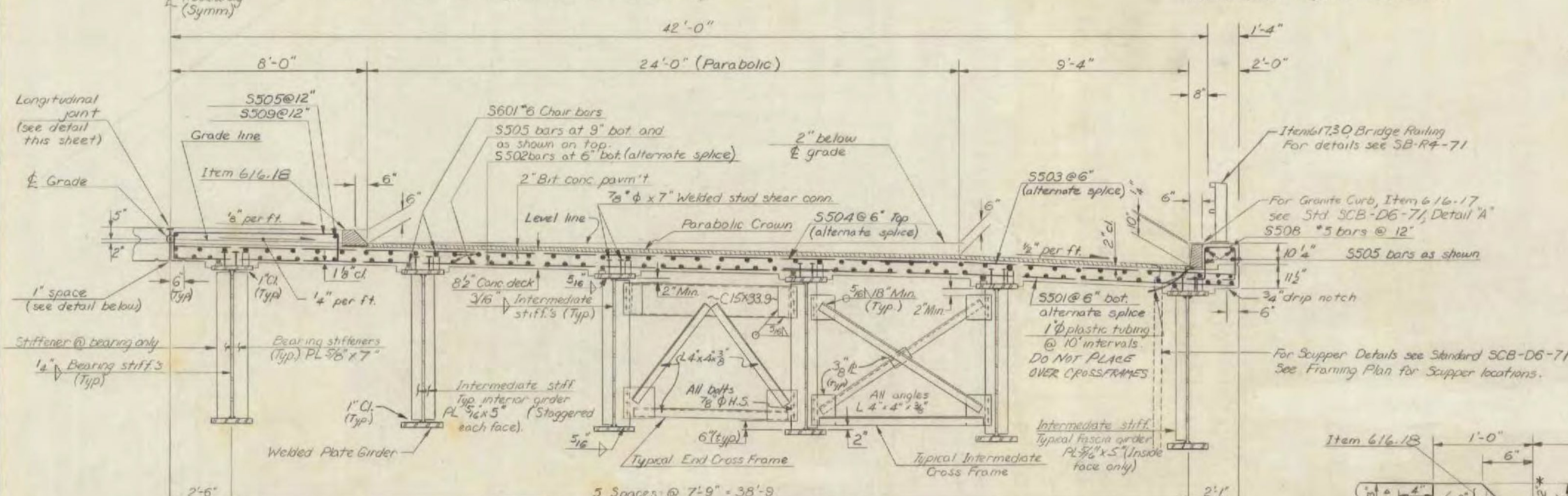


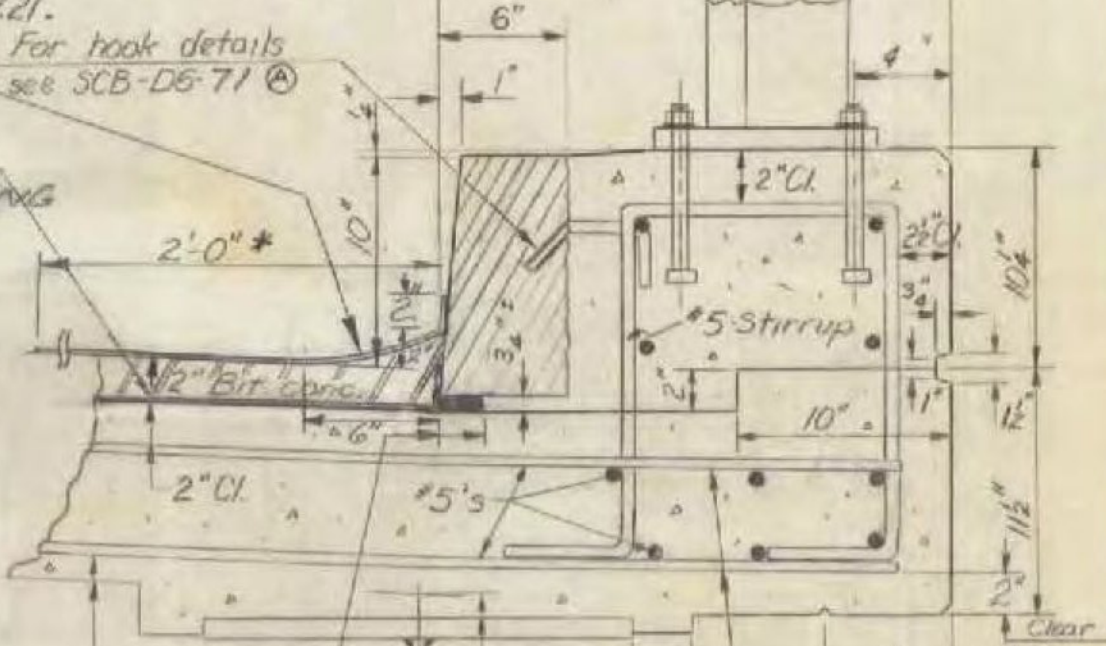
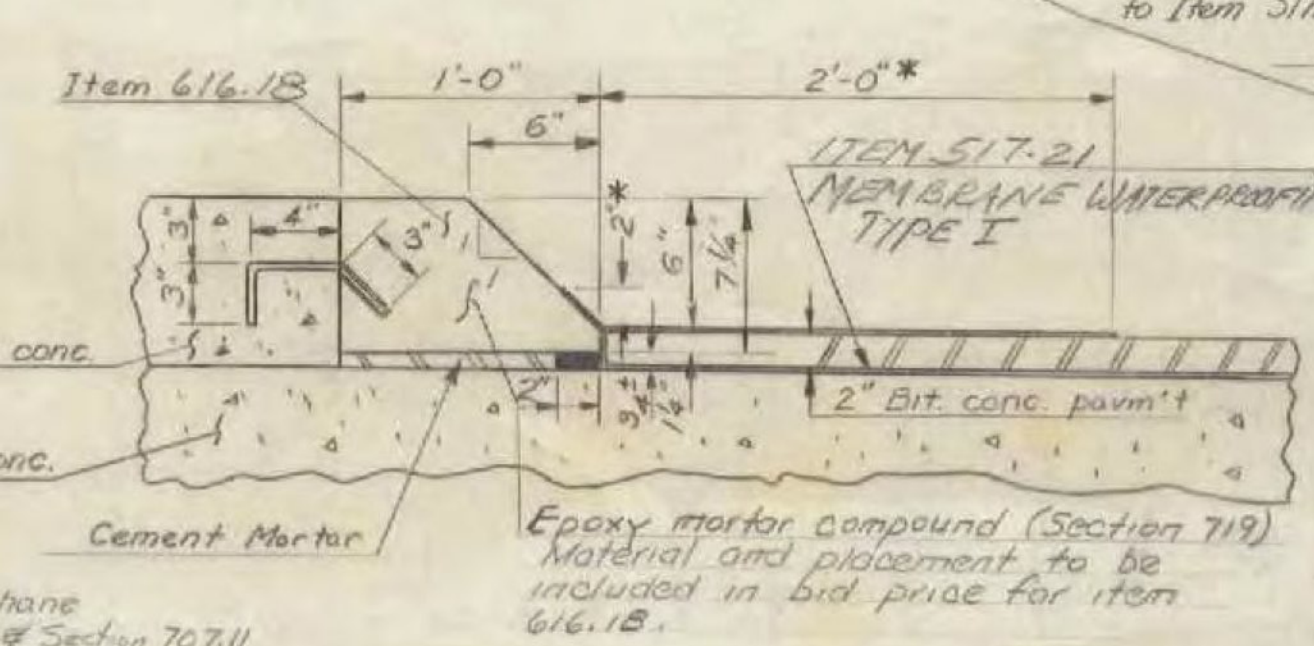
Floor slab shall be Concrete Class A. Surface shall be machine finished and dragged. (See sect. 501.14b)

See standard SCB-D4-71 for reinforcement layout @ abutments.



Bituminous Concrete Fillet
Surface is to be shaped and compacted to meet the approval of the Engineer. Dimensions shown are approximate only. (Same detail for app. slab)

* Tar Emulsion; one mopping req'd. Cost for this work to be subsidiary to Item 517.21. For hook details see SCB-D6-71 (C)

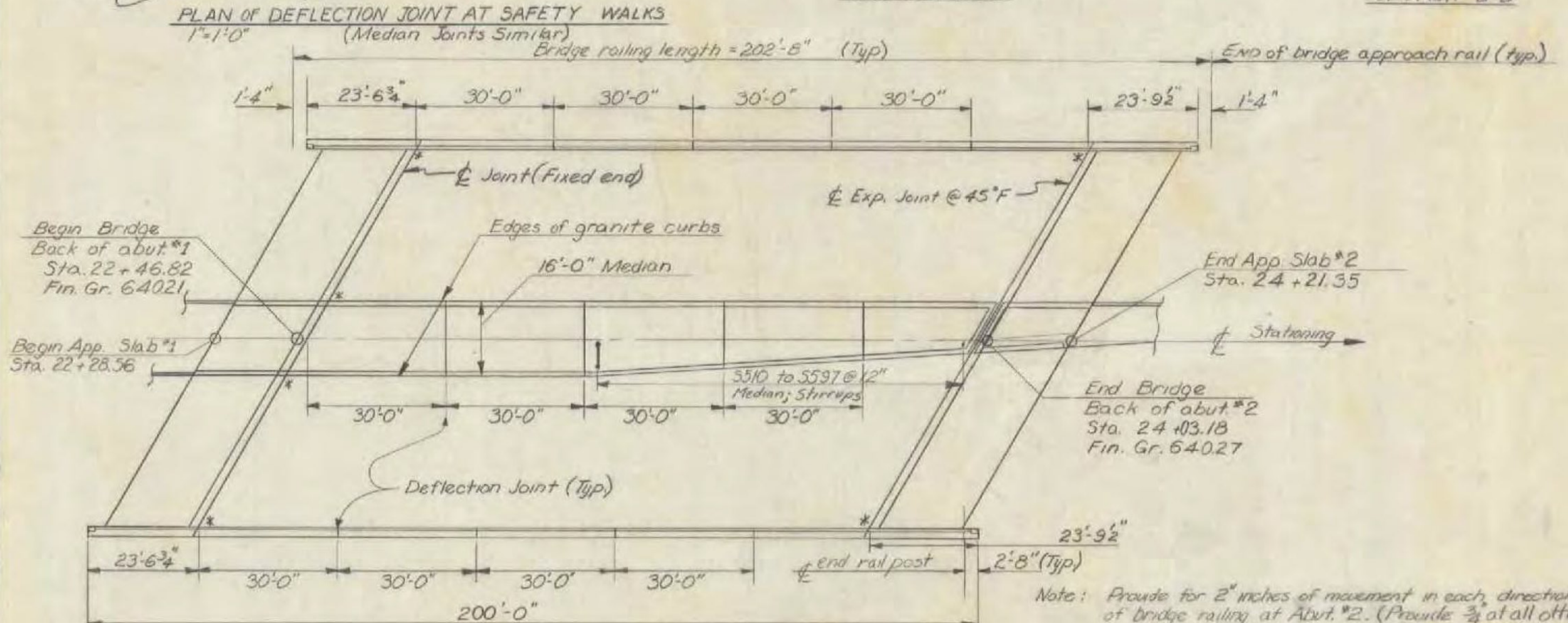
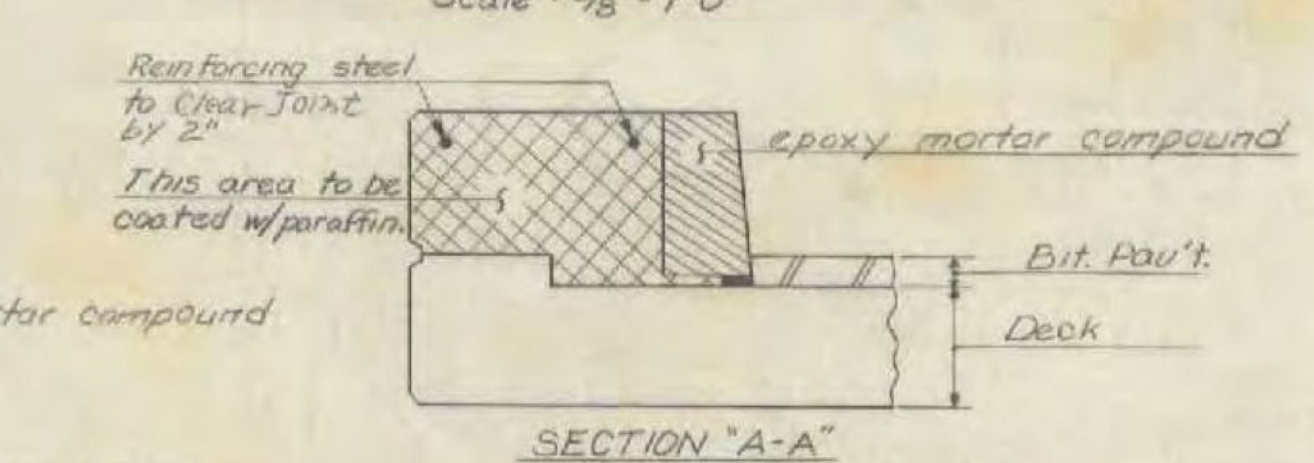
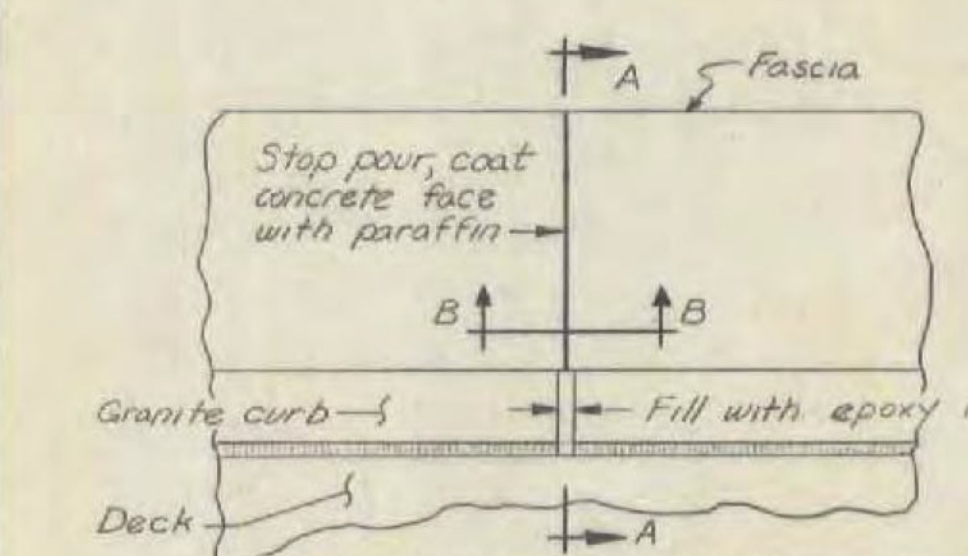


Field bend of curb line. Tie both mats to stirrup bars.

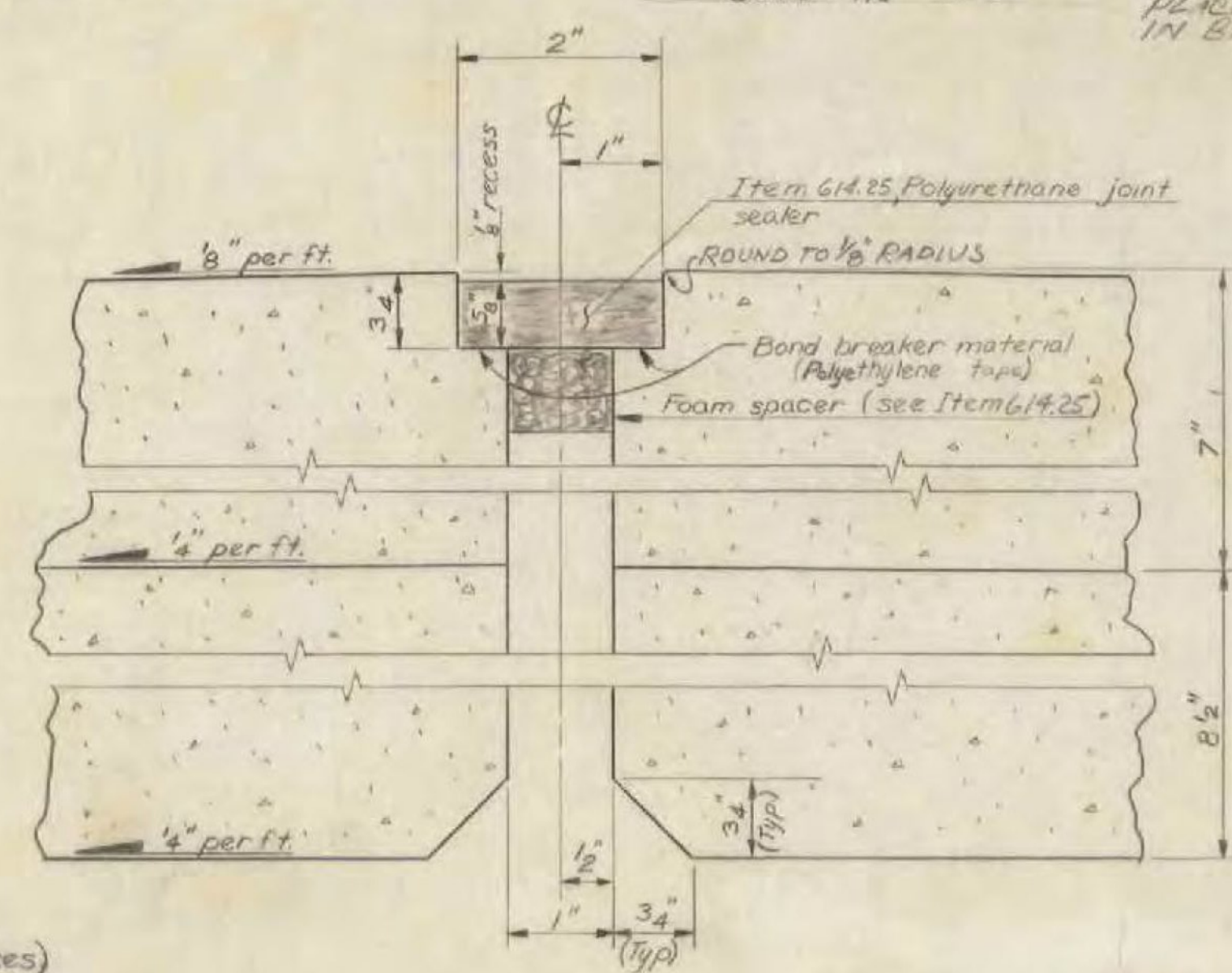
FOR SCUPPER DETAILS SEE SCB-D6-71 (D)

- NOTES
- All straight sections of Granite Curb shall be furnished in random lengths from 4 to 10 feet.
 - Detailed drawings for the layout of the Granite Bridge Curb, Item 616.17, shall be submitted in triplicate to the State for approval prior to fabrication or shipment.
 - All bolts to be 3/8" ϕ H.S. A-325 in 1/2" ϕ holes.

TYPICAL HALF SECTION
Scale: 3/8" = 1'-0"



Note: Provide for 2" inches of movement in each direction of bridge railing at Abut. #2. (Provide 3/4" of all other splices)
* Curb shall be sawed on a skew at indicated joints.
For detail of median curb at fixed end see Br-5011 & Br-5010.
Concrete safety walks and median island shall be placed in alternate sections, allowing a minimum of 48 hours between the placing of alternate sections.



LONGITUDINAL JOINT DETAIL
Scale: 3/4" = 1'

(RE-ADVERTISED)
BENNINGTON - MT TABOR
BF BPNT (16)
PROJECT BRIDGE 11
SHEET 11 OF 23
FOR INFORMATION ONLY

STATE OF VERMONT
DEPARTMENT OF HIGHWAYS

TOWN OF Bennington

ROUTE No. US 7 Conn. STATION 23+25
US 7 Connector over Hoaring Branch

TYPICAL SECTION & CURB AND RAIL DETAILS
SCALE As noted

SECTION SUPERVISOR A. BUCHANAN 2-7-72
DRAWN BY Armstrong CHECKED BY COUCH
PROJECT No. DP-U-F 219-10
SHEET 21 OF 156