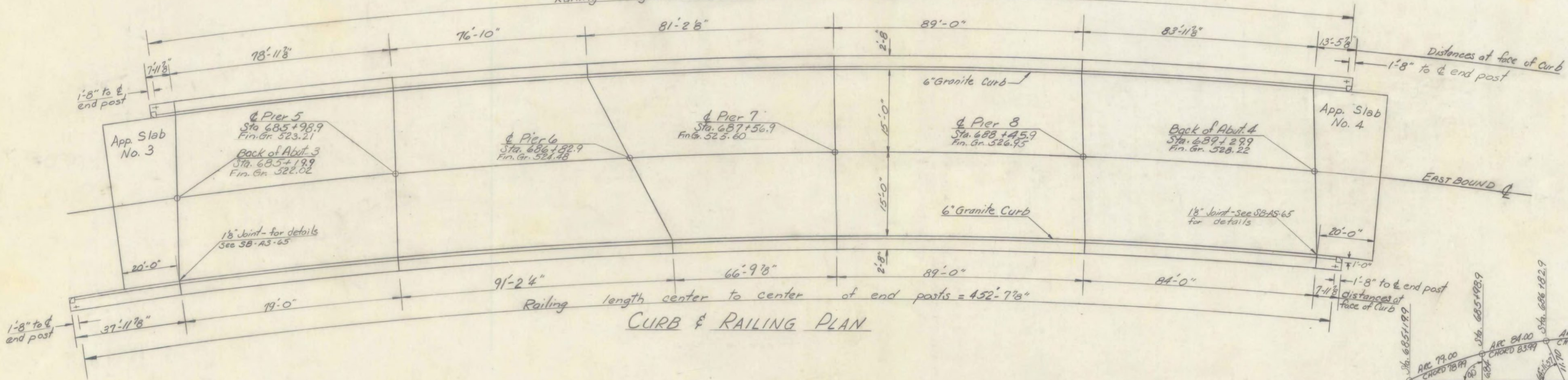


FRAMING PLAN

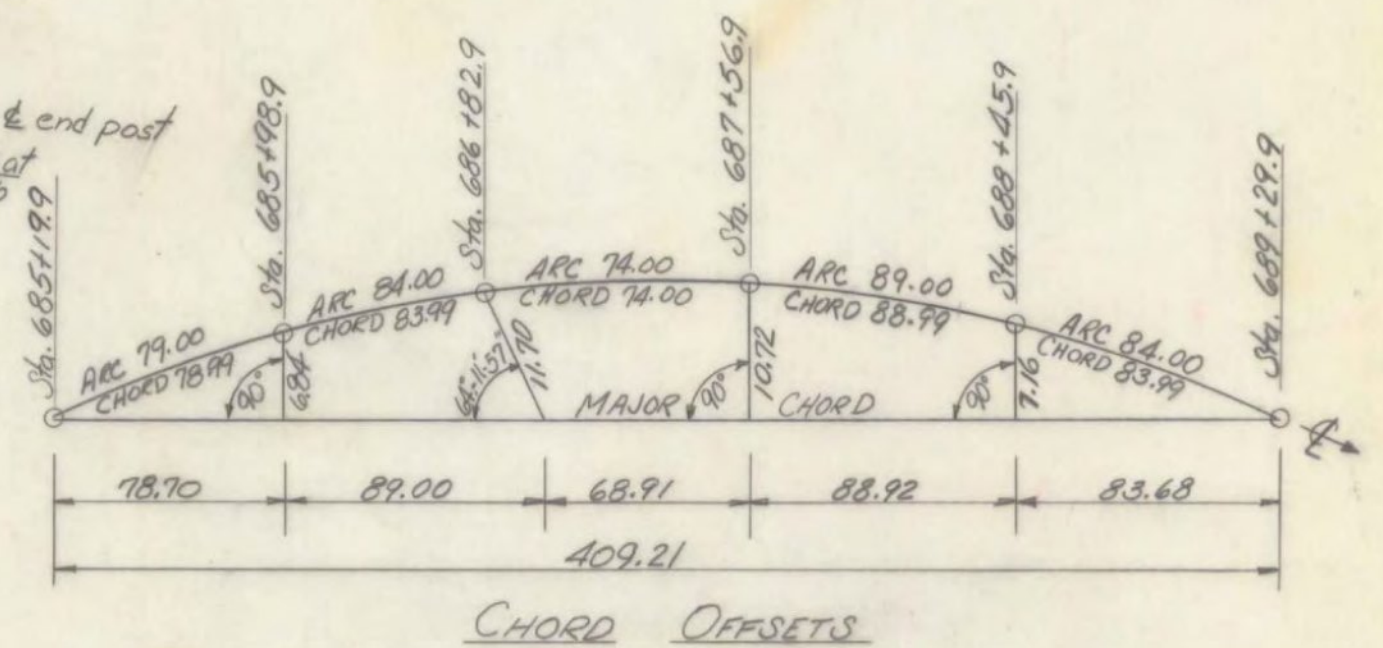
Railing length center to center of end posts = 428'-1 1/8"



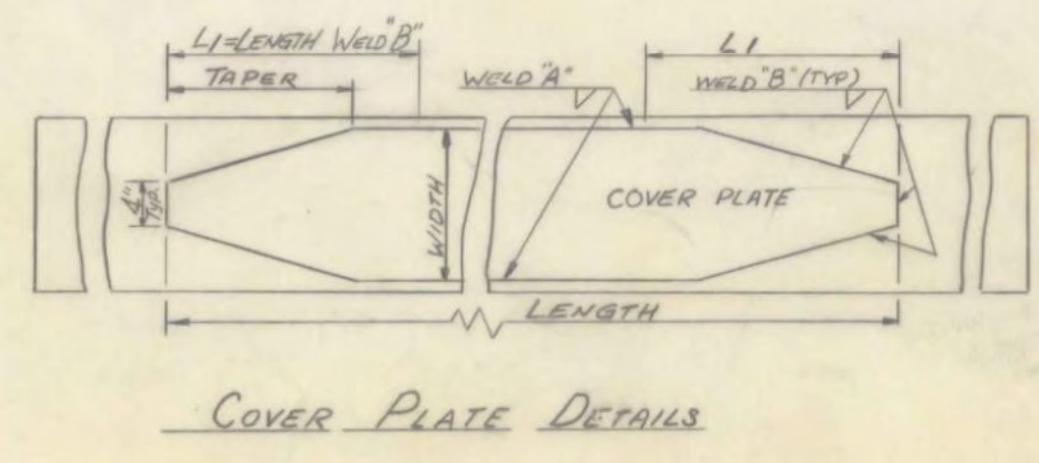
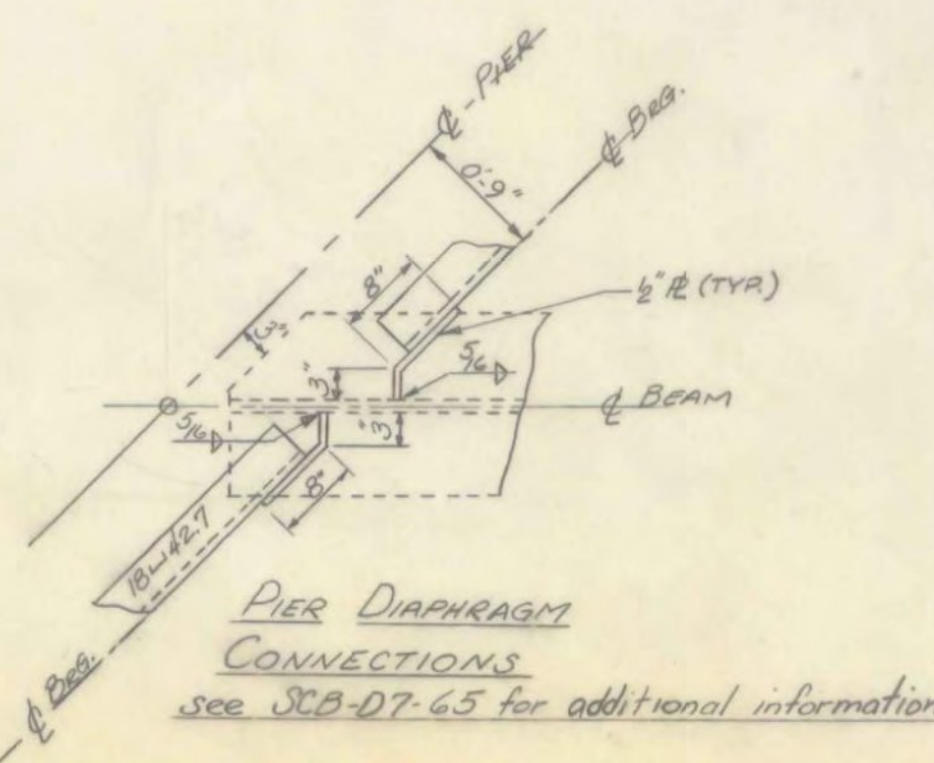
CURB & RAILING PLAN

NOTES:
 1. For Superstructure notes see Br 106
 2. All expansion bearing devices on the eastbound lane shall be as per SCB-DB-65, detail B

CASTLETON - WEST RUTLAND
 BF BPNT (15)
 PROJECT BRIDGE 13E
 SHEET 14 OF 14
 FOR INFORMATION ONLY



CHORD OFFSETS



SPAN	BEAM NO.	CAMBER	SIZE	LENGTH C-C of BRG.	COVER PLATE (SEE SCB-D7-65)					SPRINK PITCH FOR SHEAR CONNECTIONS						
					LENGTH	WIDTH	THICKNESS	TAPER	WELD "A"	WELD "B"	L1	6'-10"	10'-20"	20'-30' @ 4"	30'-40' @ 6"	40'-50' @ 8"
6	ALL	3/8"	36WF194	77.24	49-10	10"	1 1/2"	1'-0"	5/16	1/2	2'-0"	double @ 5"	double @ 7"	single @ 4 1/2"	single @ 6"	---
	31	3/8"	36WF194	75.26	47-1	10"	1 1/2"	1'-0"	5/16	1/2	1'-9 1/2"	double @ 5"	double @ 6 1/2"	single @ 4 1/2"	single @ 6"	---
	32	3/4	36WF194	78.87	52-9	10"	1 1/2"	1'-0"	5/16	1/2	2'-3"	double @ 5"	double @ 6 1/2"	" " 4"	" " 5"	---
	33	3/8"	36WF230	82.43	49-7	14	1 1/2"	1'-6"	5/16	1/2	1-11	" 5 1/2"	" 6 1/2"	" 4 1/2"	" 5 1/2"	---
	34	3/8"	36WF230	85.98	58-8"	14	1 1/2"	1'-6"	5/16	1/2	2'-7"	" 5 1/2"	" 6 1/2"	" 4"	" 5"	---
7	35	3/8"	36WF230	89.61	63-2"	14	1 1/2"	1'-6"	5/16	1/2	3-2	" 5 1/2"	" 6 1/2"	" 4"	" 5"	---
	36	3/8"	36WF194	79.59	54-11	10	1 1/2"	1'-0"	5/16	1/2	2'-6"	double @ 5"	double @ 6 1/2"	single @ 4 1/2"	single @ 6"	---
	37	3"	36WF194	76.03	46-5	10	1 1/2"	1'-0"	5/16	1/2	1'-9 1/2"	" 5"	" 6 1/2"	" 4"	" 5 1/2"	---
	38	2 1/8"	36WF190	72.41	50-0	10	1 1/2"	1'-0"	5/16	1/2	2-0	" 5"	" 6"	" 4"	" 5 1/2"	---
	39	2 3/4"	36WF150	68.79	46-11	10	1 1/2"	1'-0"	5/16	1/2	1-9 1/2"	" 5"	" 6 1/2"	" 4 1/2"	" 5 1/2"	---
	40	2 3/8"	36WF150	65.23	41-1	10	1 1/2"	1'-0"	5/16	5/16	1-9 1/2"	" 5"	" 6 1/2"	" 4 1/2"	" 4 1/2"	---
8	ALL	3/8"	36WF230	87.50	59-5"	14	1 1/2"	1'-6"	5/16	1/2	2-10	double @ 5"	double @ 6 1/2"	" @ 4 1/2"	" 5"	single @ 6"
	ALL	3/2"	36WF230	82.24	49-5	14	1 1/2"	1'-6"	5/16	1/2	1-11	double @ 5"	" @ 7"	" @ 4 1/2"	" @ 6"	" @ 6"

STATE OF VERMONT
 DEPARTMENT OF HIGHWAYS

PROJECT: WEST RUTLAND
 TOWN OF: WEST RUTLAND
 ROUTE No US 4 STA. 687+50

US 4 over R.R. and CASTLETON RIVER EASTBOUND
 FRAMING PLAN & CURB and RAILING PLAN

SCALE NOT TO SCALE

IN CHARGE: W. Smith
 DRAWN BY: ISHAM CHECKED BY: D. PERKINS
 PROJECT No. AP 020-1(10)
 SHEET 88 OF 359 BR 107