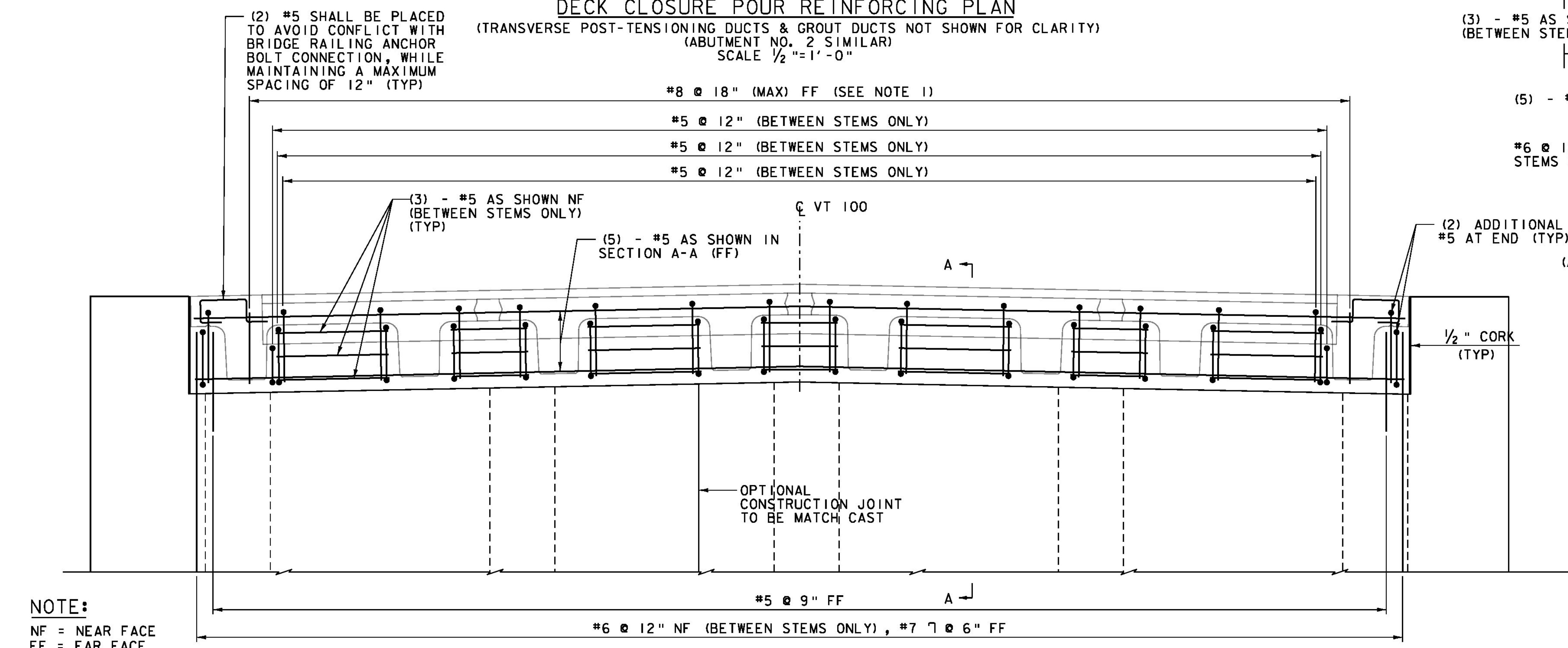
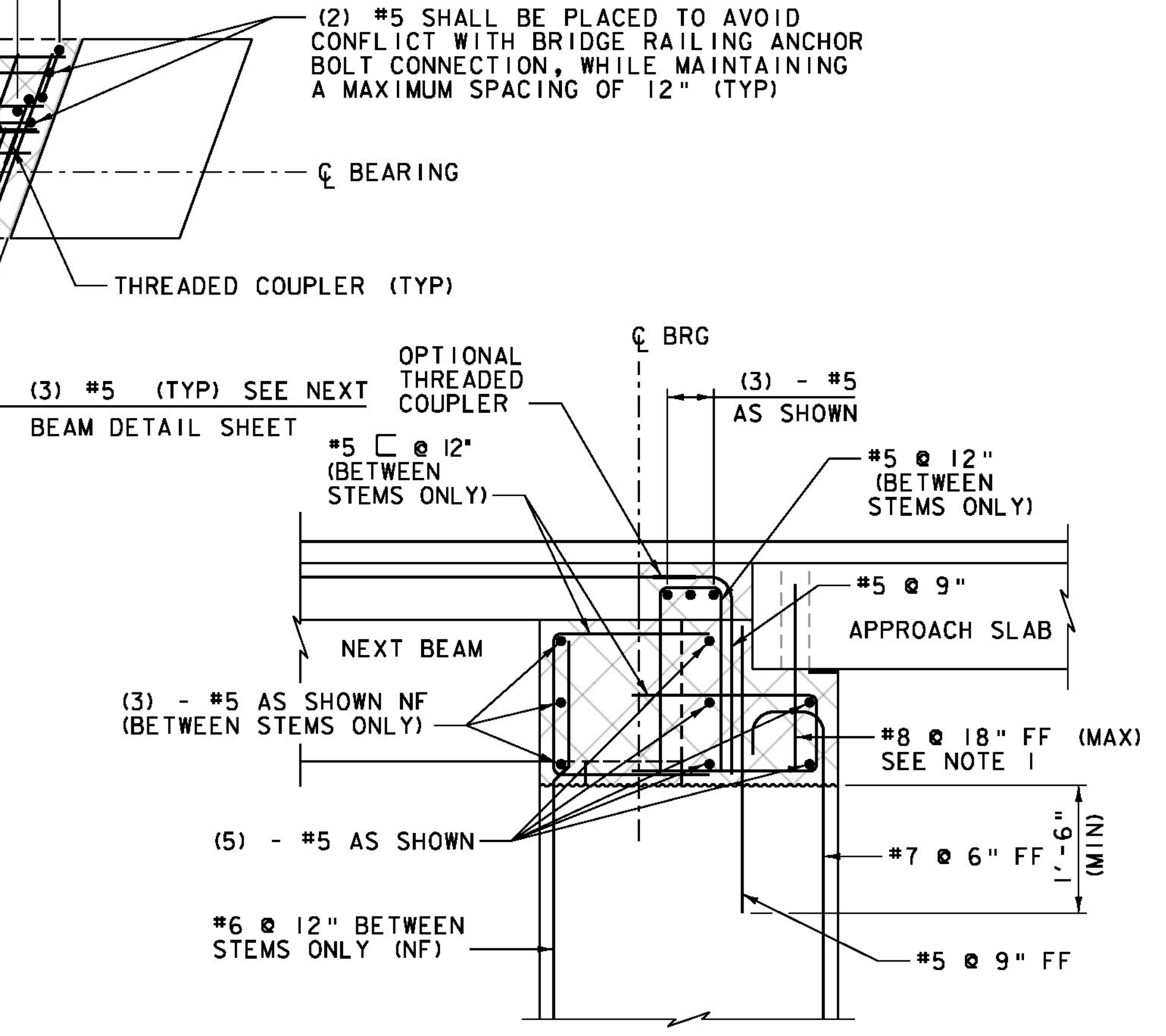


**ABUTMENT NO 1
DECK CLOSURE POUR REINFORCING PLAN**
(TRANSVERSE POST-TENSIONING DUCTS & GROUT DUCTS NOT SHOWN FOR CLARITY)
(ABUTMENT NO. 2 SIMILAR)
SCALE 1/2" = 1'-0"



**ABUTMENT NO 1
DECK CLOSURE POUR REINFORCING ELEVATION**
(TRANSVERSE POST-TENSIONING DUCTS NOT SHOWN FOR CLARITY)
(ABUTMENT NO 2 SIMILAR)
SCALE 1/2" = 1'-0"



SECTION A-A
(ABUT NO 1 SHOWN, ABUT NO 2 SIMILAR, OPPOSITE HAND)
(DIMENSIONS ARE NORMAL TO C/BRG)
SCALE 3/4" = 1'-0"

LIMITS OF SPECIAL PROVISION
(HIGH PERFORMANCE CONCRETE,
RAPID SET) (FPQ) CLOSURE POUR

- NOTE:**
1. SPACED TO MATCH 4" DIAMETER HOLES IN THE PRECAST APPROACH SLAB.
 2. ALL REINFORCING WITHIN CLOSURE POUR NEAR THE BRIDGE RAILING ANCHOR ASSEMBLY LOCATIONS SHALL BE PLACED AT THEIR MINIMUM SPACING WHILE AVOIDING THE BRIDGE RAILING ASSEMBLIES.
 3. ITEM 524.21, JOINT SEALER, POLYURETHANE, WILL BE APPLIED OVER THE CORK AND ON THE FAR FACE OF THE MATCH CAST VERTICAL CONSTRUCTION JOINT.

NOTE:
NF = NEAR FACE
FF = FAR FACE
EF = EACH FACE
▲ = CUT TO FIT IN FIELD
3" CLEAR, UNLESS OTHERWISE SPECIFIED ON THE PLANS.
2'-2" BAR LAP UNLESS OTHERWISE SPECIFIED ON THE PLANS.

PROJECT NAME: WESTON	PLOT DATE: 10/2/2015
PROJECT NUMBER: BF 013-2(13)	DRAWN BY: J.J. WESTCOTT
FILE NAME: z13b076subl.dgn	CHECKED BY: L.S. CHERVINCKY
PROJECT LEADER: S.E. BURBANK	SHEET 40 OF 68
DESIGNED BY: J.J. WESTCOTT	
NEXT BEAM DECK CLOSURE POUR	

