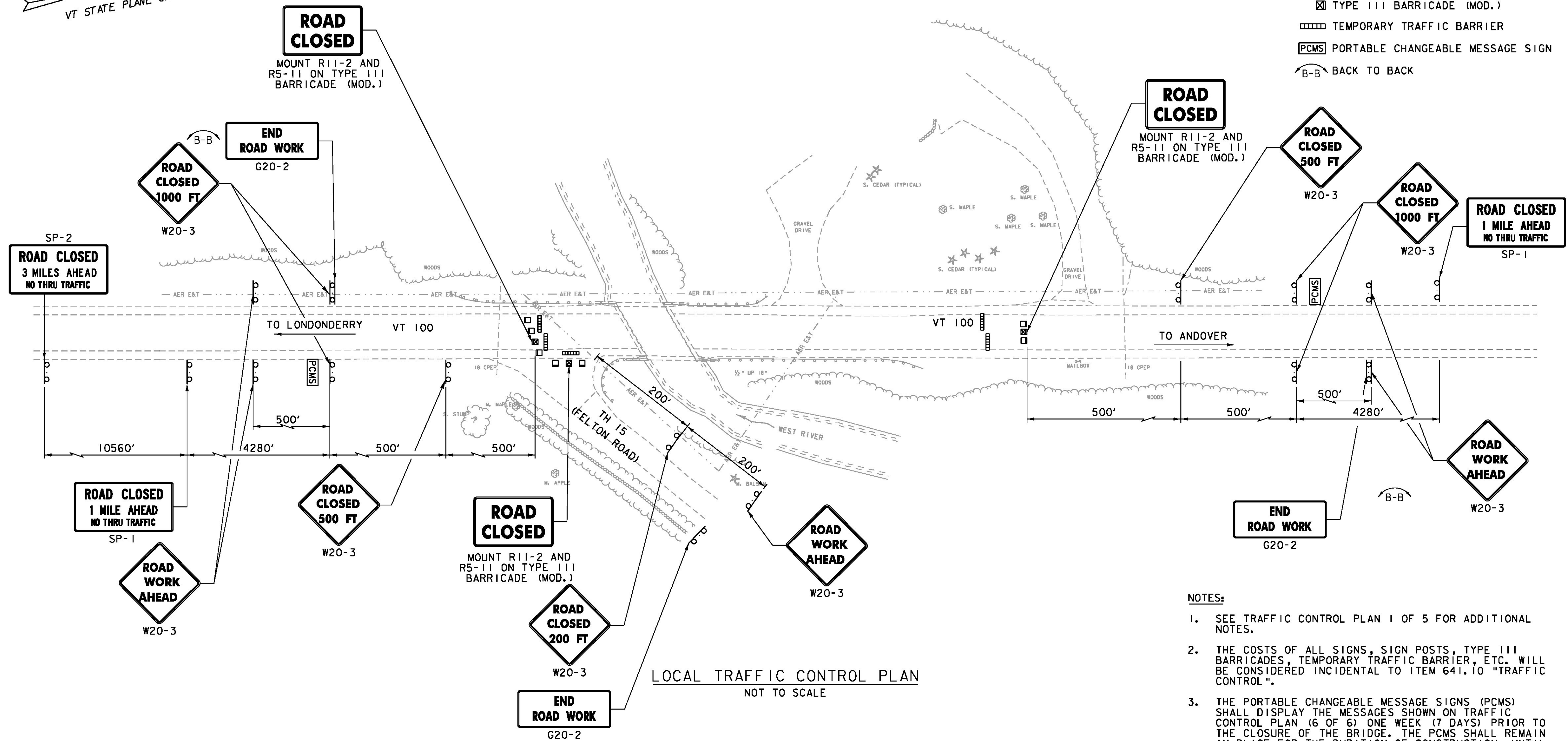


LEGEND

- TYPE III BARRICADE
- ⊠ TYPE III BARRICADE (MOD.)
- ▤ TEMPORARY TRAFFIC BARRIER
- PCMS PORTABLE CHANGEABLE MESSAGE SIGN
- ⤵ B-B BACK TO BACK



NOTES:

1. SEE TRAFFIC CONTROL PLAN 1 OF 5 FOR ADDITIONAL NOTES.
2. THE COSTS OF ALL SIGNS, SIGN POSTS, TYPE III BARRICADES, TEMPORARY TRAFFIC BARRIER, ETC. WILL BE CONSIDERED INCIDENTAL TO ITEM 641.10 "TRAFFIC CONTROL".
3. THE PORTABLE CHANGEABLE MESSAGE SIGNS (PCMS) SHALL DISPLAY THE MESSAGES SHOWN ON TRAFFIC CONTROL PLAN (6 OF 6) ONE WEEK (7 DAYS) PRIOR TO THE CLOSURE OF THE BRIDGE. THE PCMS SHALL REMAIN IN PLACE FOR THE DURATION OF CONSTRUCTION, UNTIL THE ROAD IS OPEN TO TRAFFIC.
4. THE NUMBER OF TYPE III BARRICADES AND OTHER TRAFFIC CONTROL DEVICES SHOWN ARE FOR ILLUSTRATIVE PURPOSES ONLY. THE ACTUAL NUMBER REQUIRED ARE TO BE DETERMINED BASED ON INDIVIDUAL ROADWAY CLOSURE REQUIREMENTS.
5. SEE THE PROJECT SPECIAL PROVISIONS FOR ALLOWABLE BRIDGE CLOSURE PERIOD.

PROJECT NAME: WESTON
 PROJECT NUMBER: BF 013-2(13)

FILE NAME: z13b076+cp.dgn
 PROJECT LEADER: M.A. COLGAN
 DESIGNED BY: J.J. WESTCOTT
 TRAFFIC CONTROL PLAN (5 OF 6)

PLOT DATE: 10/2/2015
 DRAWN BY: J.J. WESTCOTT
 CHECKED BY: S.E. BURBANK
 SHEET 23 OF 68

