

GPS CONTROL POINTS

__HVCTRL #1__

WEST AZ MK

NORTH = 300963.067
EAST = 1565731.875
ELEV. = 1441.280

GENERAL LOCATION, WESTON, VT.
TO REACH FROM THE INTERSECTION OF VT ROUTES 100 AND 155, GO SOUTH ALONG VT ROUTE 100 FOR 0.9 MI (1.4 KM) TO A FIELD DRIVE ON THE LEFT LEADING TO A HOUSE LOCATED PAST A WOODEN BRIDGE AND THE SITE OF THE MARK ON THE LEFT.
THE MARK IS SET 3 CM (1 INCH) BELOW GROUND SURFACE IN THE TOP OF A FENO STYLE MONUMENT. IT IS 24.5 M (80.4 FT) SOUTHWEST OF AND ABOUT 2.0 M (6.6 FT) LOWER THAN THE CENTERLINE OF VT ROUTE 100, 6.0 M (19.7 FT) WEST-SOUTHWEST OF THE CENTERLINE OF THE FIELD DRIVE, 18.6 M (61.0 FT) EAST OF POLE NO 6/162/338, 16.5 M (54.1 FT) EAST-NORTHEAST OF A GUY ANCHOR AND 29.0 M (95.1 FT) NORTHWEST OF THE CENTER OF THE WOODEN BRIDGE ALONG THE FIELD DRIVE.

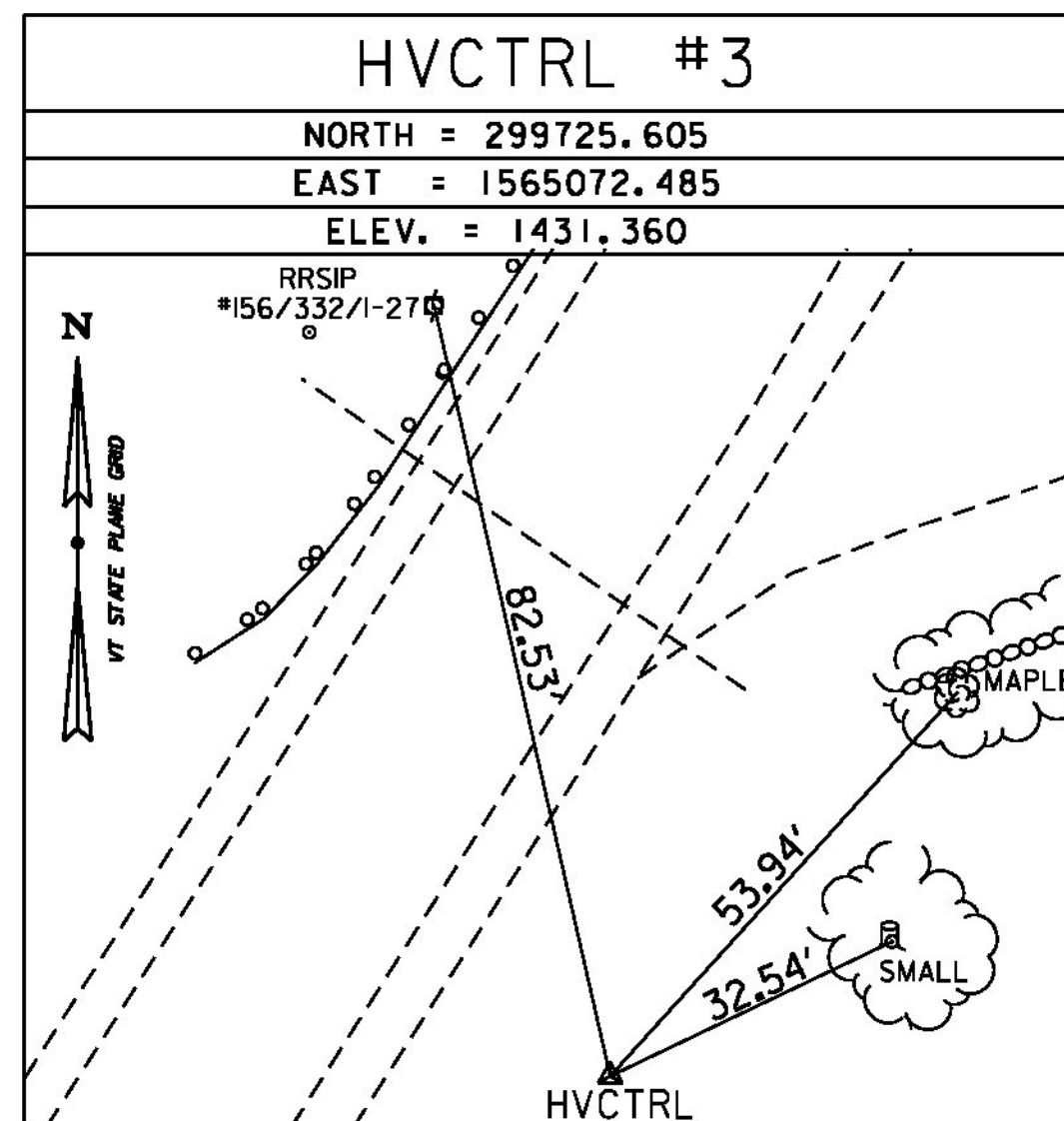
__HVCTRL #2__

WEST

NORTH = 299849.204
EAST = 1565089.519
ELEV. = 1432.239

GENERAL LOCATION, WESTON, VT.
TO REACH FROM THE INTERSECTION OF VT ROUTES 100 AND 155 IN WESTON, GO SOUTH ALONG VT ROUTE 100 FOR 1.1 MI (1.8 KM) TO THE SITE OF THE MARK ON THE RIGHT SET IN THE WEST END OF THE NORTHWEST CORNER OF BRIDGE NO 98 OVER THE WEST RIVER.
IT IS 4.8 M (15.7 FT) NORTH OF THE CENTERLINE OF VT ROUTE 100, 15 CM (6 INCHES) SOUTH OF THE NORTH EDGE OF THE BRIDGE, 25 CM (10 INCHES) NORTH OF THE SOUTH FACE OF THE GRANITE CURB.

TRAVERSE TIES



HVCTRL #3

NORTH = 299725.605
EAST = 1565072.485
ELEV. = 1431.360

NORTH =
EAST =
ELEV. =

NORTH =
EAST =
ELEV. =

NORTH =
EAST =
ELEV. =

NORTH =
EAST =
ELEV. =

ALIGNMENT TIES

NORTH =
EAST =
ELEV. =

NORTH =
EAST =
ELEV. =

NORTH =
EAST =
ELEV. =

NORTH =
EAST =
ELEV. =

NORTH =
EAST =
ELEV. =

DATUM	
VERTICAL	NAVD 88
HORIZONTAL	NAD 83(2011)
ADJUSTMENT	COMPASS

PROJECT NAME:	WESTON	FILE NAME:	z13b076+1.dgn	PLOT DATE:	10/2/2015
PROJECT NUMBER:	BF 013-2(13)	PROJECT LEADER:	S.E. BURBANK	DRAWN BY:	J.J. WESTCOTT
		DESIGNED BY:	J.J. WESTCOTT	CHECKED BY:	S.E. BURBANK
		TIE SHEET		SHEET	13 OF 68

