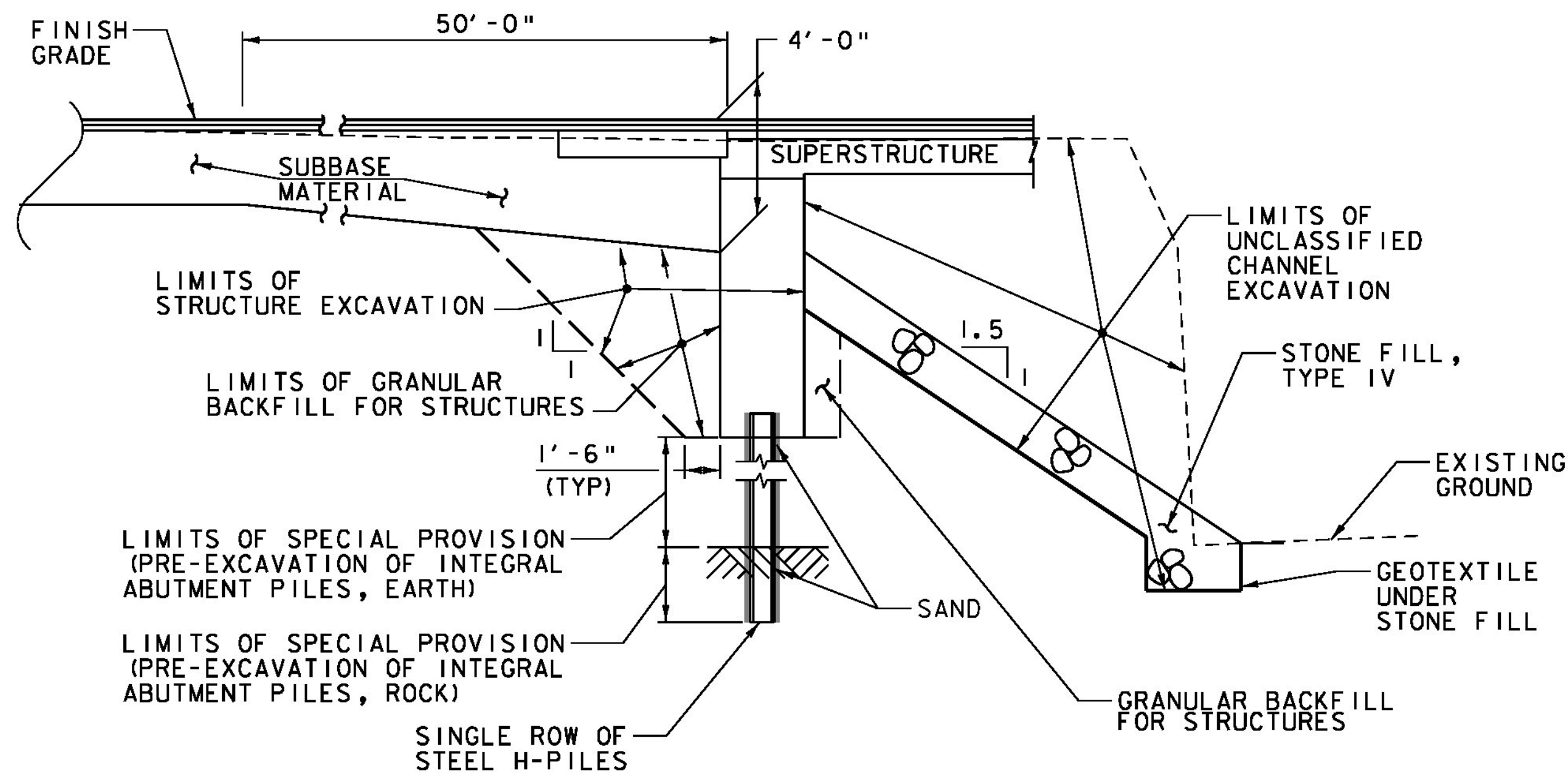


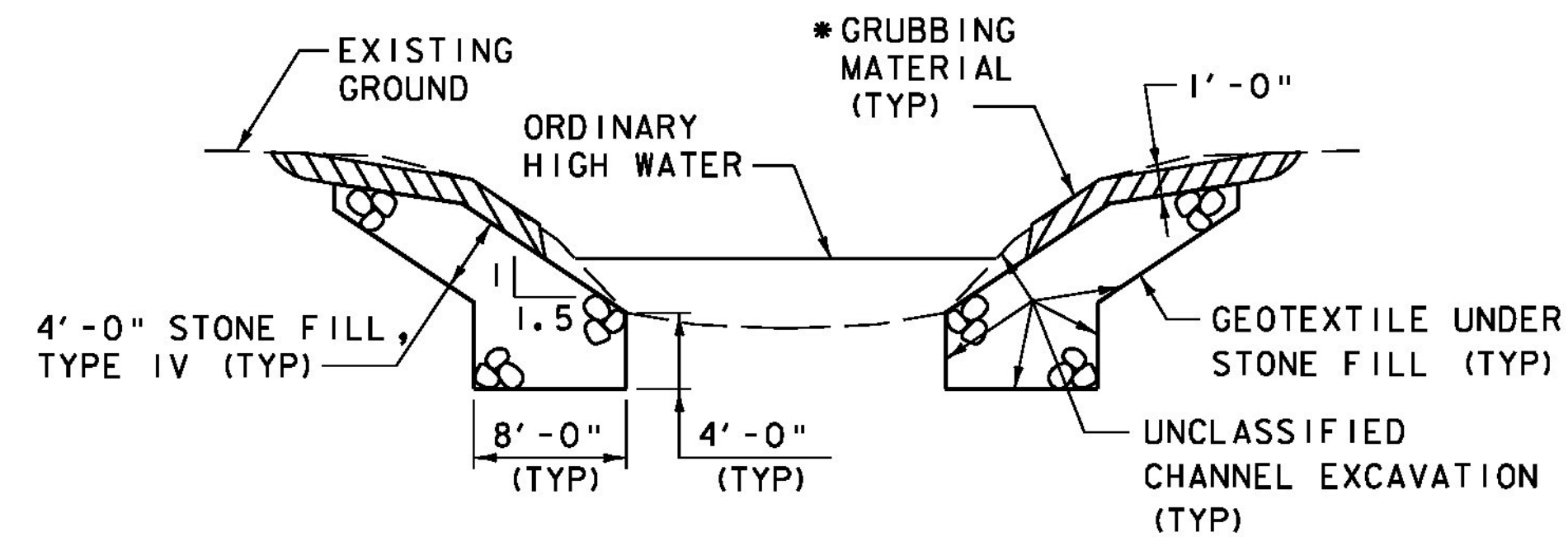
NOTE: EMULSIFIED ASPHALT IS TO BE APPLIED AT A RATE OF 0.040 GAL/SY BETWEEN SUCCESSIVE COURSES OF BITUMINOUS CONCRETE PAVEMENT AND ON THE APPROACH SLAB PRIOR TO PLACING THE FIRST LIFT AND AT A RATE OF 0.080 GAL/SY ON ALL COLD PLANED SURFACES, AS DIRECTED BY THE ENGINEER.

APPROACH SECTION
NOT TO SCALE



NOTE: ACTUAL STRUCTURE EXCAVATION LIMITS SHALL BE DETERMINED BY THE CONTRACTOR. HOWEVER, ONLY THE EXCAVATION BETWEEN THE LIMITS SHOWN FOR STRUCTURE EXCAVATION WILL BE PAID FOR UNDER ITEM 204.25, "STRUCTURE EXCAVATION". EXCAVATION OUTSIDE OF THESE LIMITS WILL BE AT THE EXPENSE OF THE CONTRACTOR.

ABUTMENT EARTHWORK SECTION
NOT TO SCALE



TYPICAL CHANNEL SECTION
NOT TO SCALE

*GRUBBING MATERIAL SHALL NOT BE PLACED ON THE STONE FILL IN THE AREA UNDER THE BRIDGE. WHENEVER CHANNEL SLOPE INTERSECTS ROADWAY SUBBASE, GRUBBING MATERIAL SHALL BEGIN AT THE BOTTOM OF SUBBASE.

PROJECT NAME: WESTON
PROJECT NUMBER: BF 013-2(13)

FILE NAME: z13b0761yp.dgn PLOT DATE: 10/2/2015
PROJECT LEADER: S.E. BURBANK DRAWN BY: J.J. WESTCOTT
DESIGNED BY: J.J. WESTCOTT CHECKED BY: S.E. BURBANK
APPROACH AND TYPICAL EARTHWORK SECTION SHEET 6 OF 68

