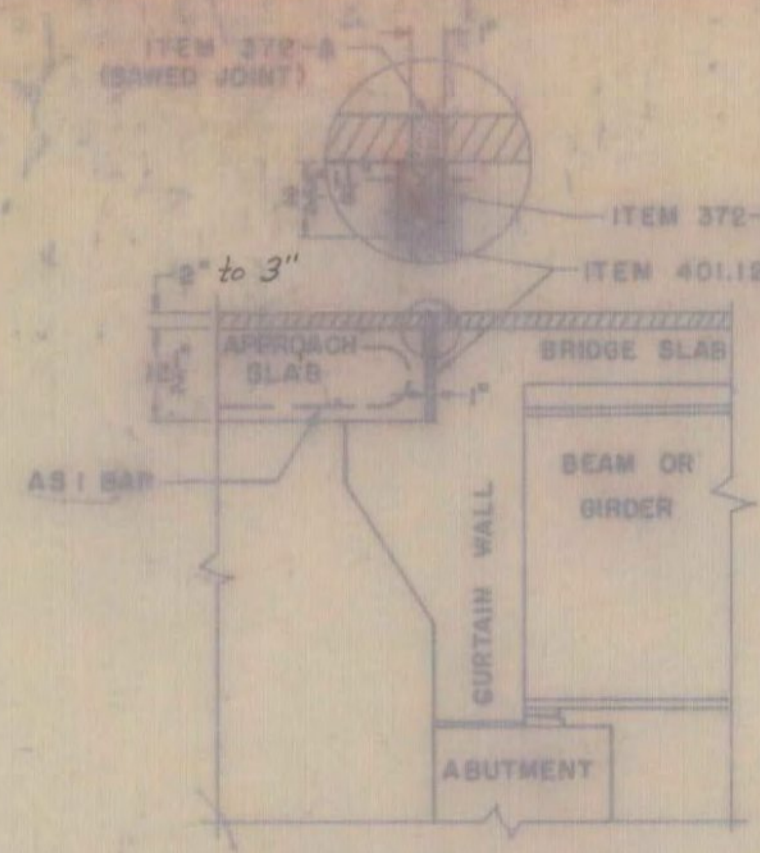
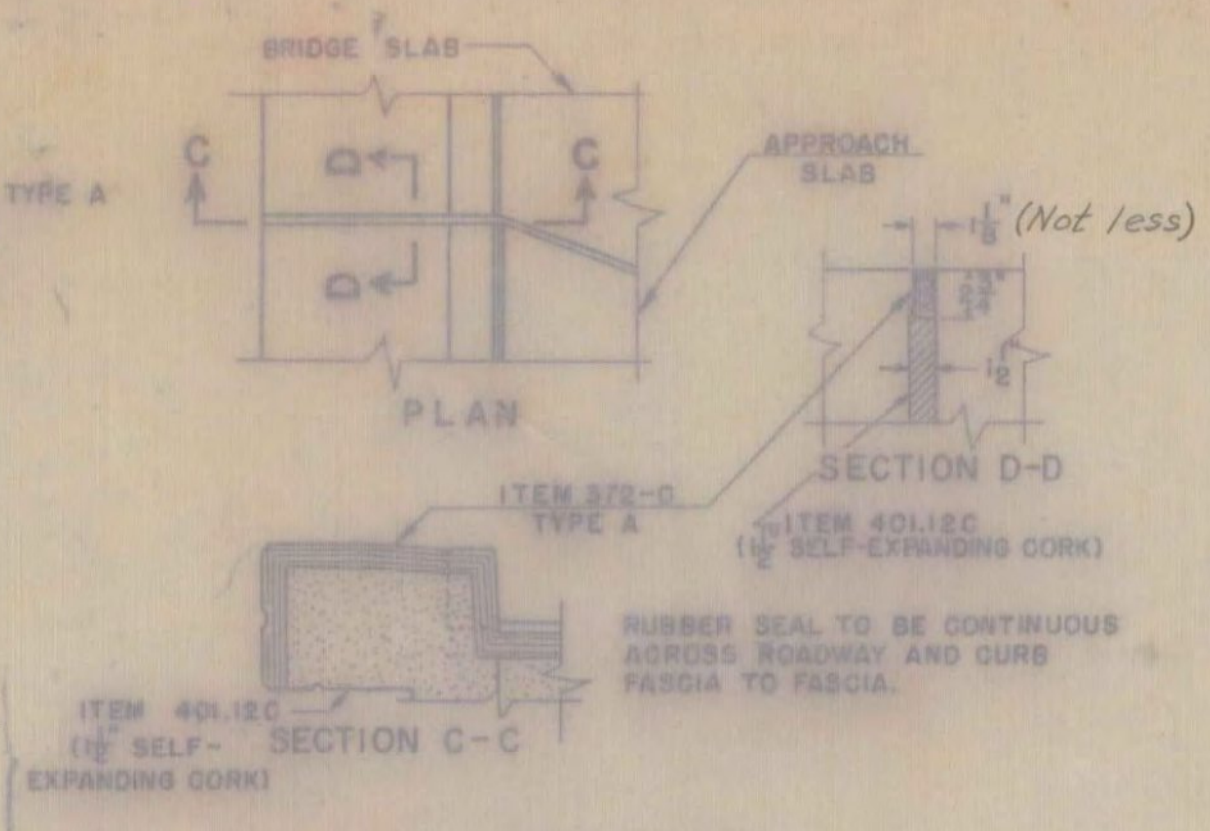


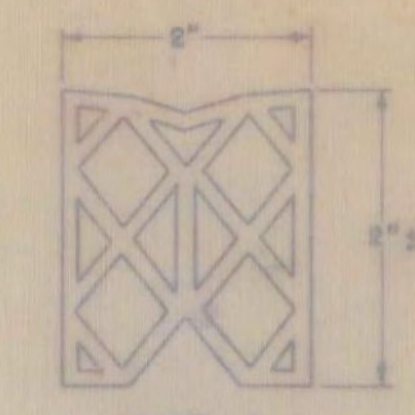
DETAIL A SQUARE  
 DETAIL B - "L" LESS THAN 35'  
 DETAIL C "L" GREATER THAN 35'



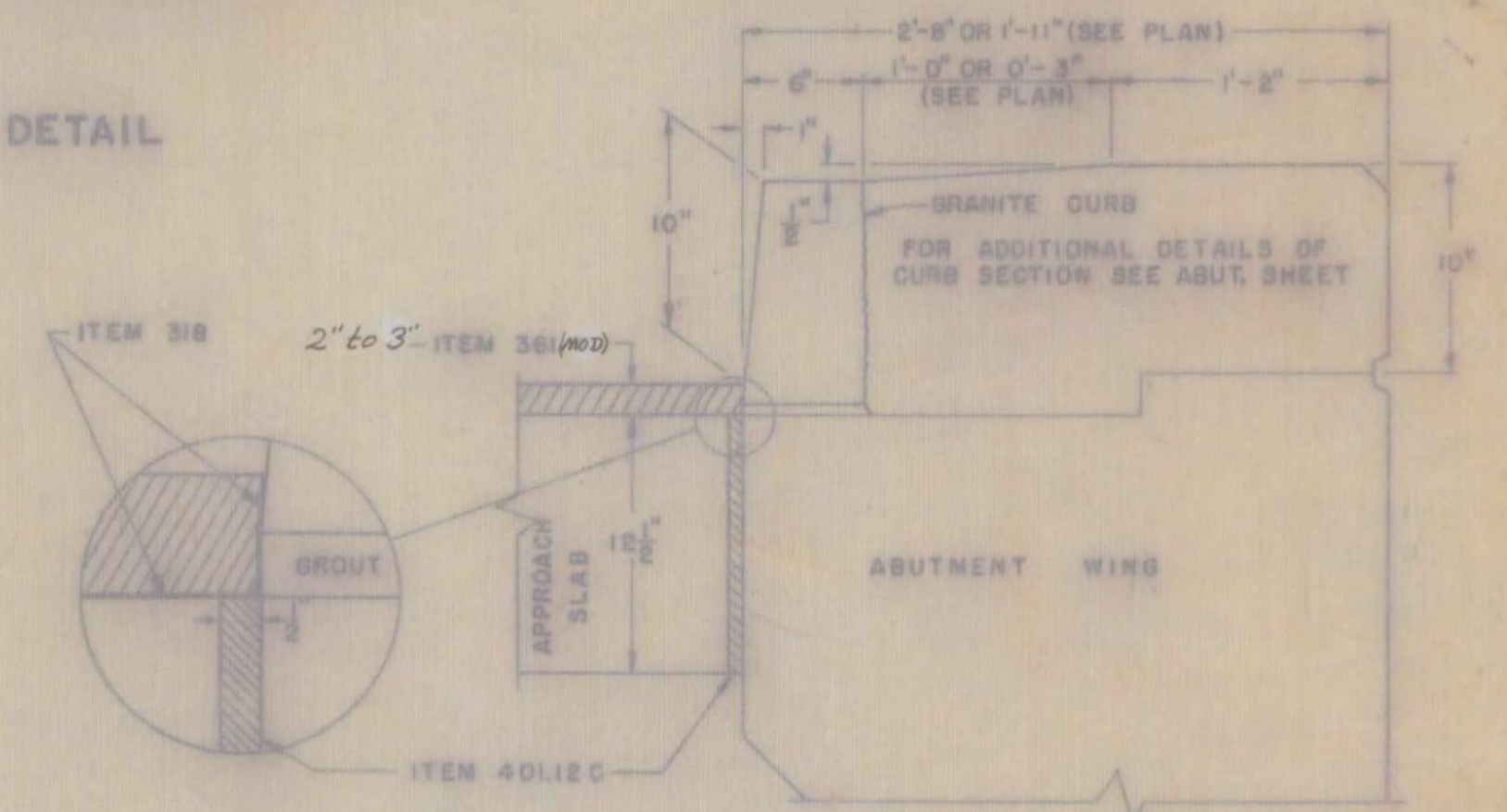
SECTION B-B



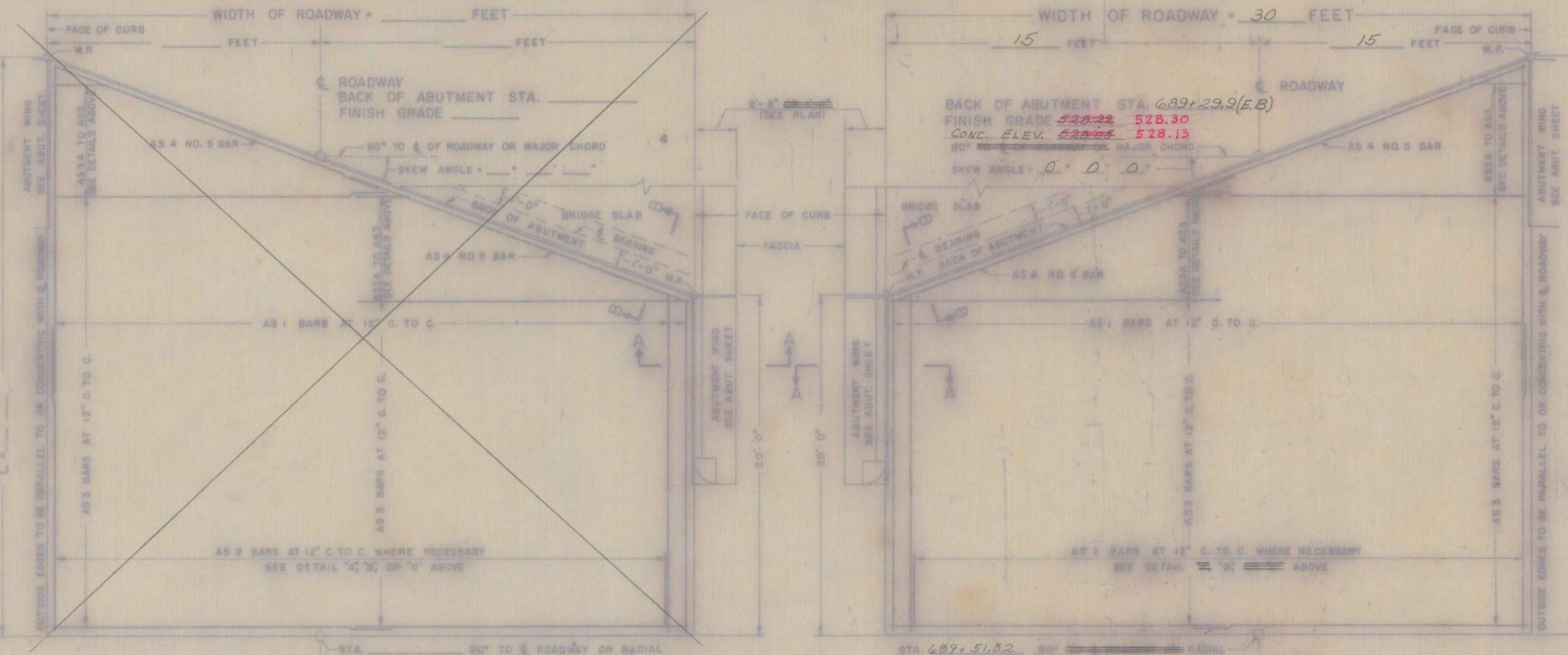
CURB JOINT DETAIL



TYPE A  
 DETAILS - ITEM 372-C JOINT SEALER - PREFORMED  
 MATERIAL TO BE PREFORMED NEOPRENE RUBBER  
 (OTHER CONFIGURATIONS THAT SATISFY  
 SPECIFICATIONS MAY BE USED.)



SECTION A-A

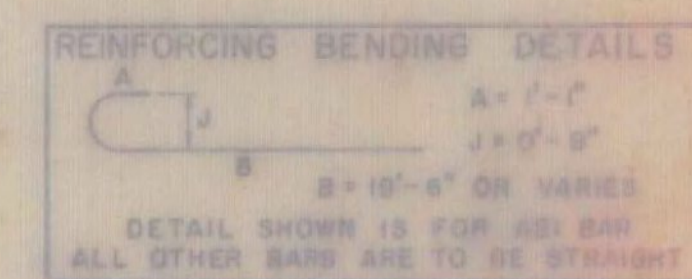


BACK OF ABUTMENT STA. 687+29.9 (E.B.)  
 FINISH GRADE 528.22 528.30  
 CONC. ELEV. 528.25 528.13

STA. 687+51.82  
 FINISH GRADE 528.63  
 CONC. ELEV. 528.38

GENERAL NOTES  
 1. ALL WORK AND MATERIALS SHALL CONFORM TO THE STATE OF VERMONT, DEPARTMENT OF HIGHWAYS, STANDARD SPECIFICATIONS FOR HIGHWAY AND BRIDGE CONSTRUCTION DATED APRIL 1964, AND THE A.A.S.H.O. SPECIFICATIONS DATED 1961. DESIGNED FOR HS20-44 LOADING.  
 2. ALL REINFORCING STEEL SHALL BE DETAILED ON THE REINFORCING STEEL SCHEDULE. ALL SPLICES SHALL BE A MINIMUM OF 40 BAR DIAMETERS.

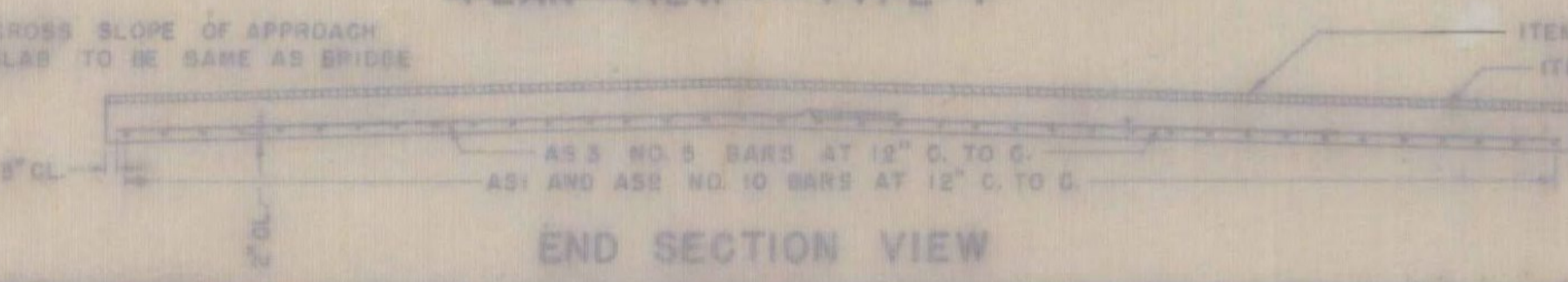
FAIR HAVEN - WEST RUTLAND  
 BF MEMB (35)  
 SHEET 37 OF 44  
 BRIDGE NO. 13E  
 FOR REFERENCE ONLY



REINFORCING BENDING DETAILS  
 DETAIL SHOWN IS FOR AS 1 BAR  
 ALL OTHER BARS ARE TO BE STRAIGHT

LIST OF QUANTITIES

| ITEM NO. | ITEM                                | UNIT |
|----------|-------------------------------------|------|
| 318      | TAR EMULSION FOR BRIDGE FLOORS      | GAL. |
| 361      | BITUMINOUS CONCRETE PAVEMENT (Mod.) | TONS |
| 372-A    | JOINT SEALER - HOT Poured           | L.F. |
| 372-C    | JOINT SEALER - PREFORMED, TYPE A    | L.F. |
| 401-B    | CONCRETE CLASS B                    | CY.  |
| 502      | REINFORCING STEEL                   | L.B. |



END SECTION VIEW

REVISIONS AND CORRECTIONS  
 1. DIMENSIONS OF JOINT FOR SEALER TYPE A REVISED 4/15/65 W.S.T.  
 2. DIMENSIONS OF JOINT SEALER TYPE B REVISED 6/23/65 W.S.T.  
 3. JOINT BETWEEN CURB AND SLAB REVISED BITUMINOUS CONCRETE REVISED TO 2" QUANTITY TOTALS REVISED. 11/17/65. W.S.T.

DRAWN BY: W.S.T. Jan 1965  
 TRACED BY: W.S.T. Jan 1965  
 CHECKED BY: W.S.T. Feb 1965

RECOMMENDED FOR APPROVAL: [Signature] 4/16/65  
 ASSISTANT CHIEF ENGINEER DATE

APPROVED BY: [Signature] 4/16/65  
 CHIEF ENGINEER DATE

DETAILS OF APPROACH SLAB  
 FOR 30 FOOT BRIDGE  
 TO BE USED FOR BRIDGE AT STATION 687+50  
 LOCATION U.S. #4 OVER D & H RAILROAD & CASTLETON RIVER

STATE OF VERMONT  
 DEPARTMENT OF HIGHWAYS  
 STANDARD STRUCTURE  
 SB-AS-65

PROJECT WEST RUTLAND  
 TOWN OF WEST RUTLAND  
 ROUTE NO. U.S. #4 STA. 687+50  
 U.S. #4 OVER D & H R.R. & CASTLETON RIVER  
 APPROACH SLAB No. 4 (E.B.)  
 NOT TO SCALE  
 IN CHARGE W. SMITH  
 DESIGNED BY W. TRIPP CHECKED BY E. Gilman  
 PROJECT NO. AP 020-1(10)  
 SHEET 103 OF 359 OR 122