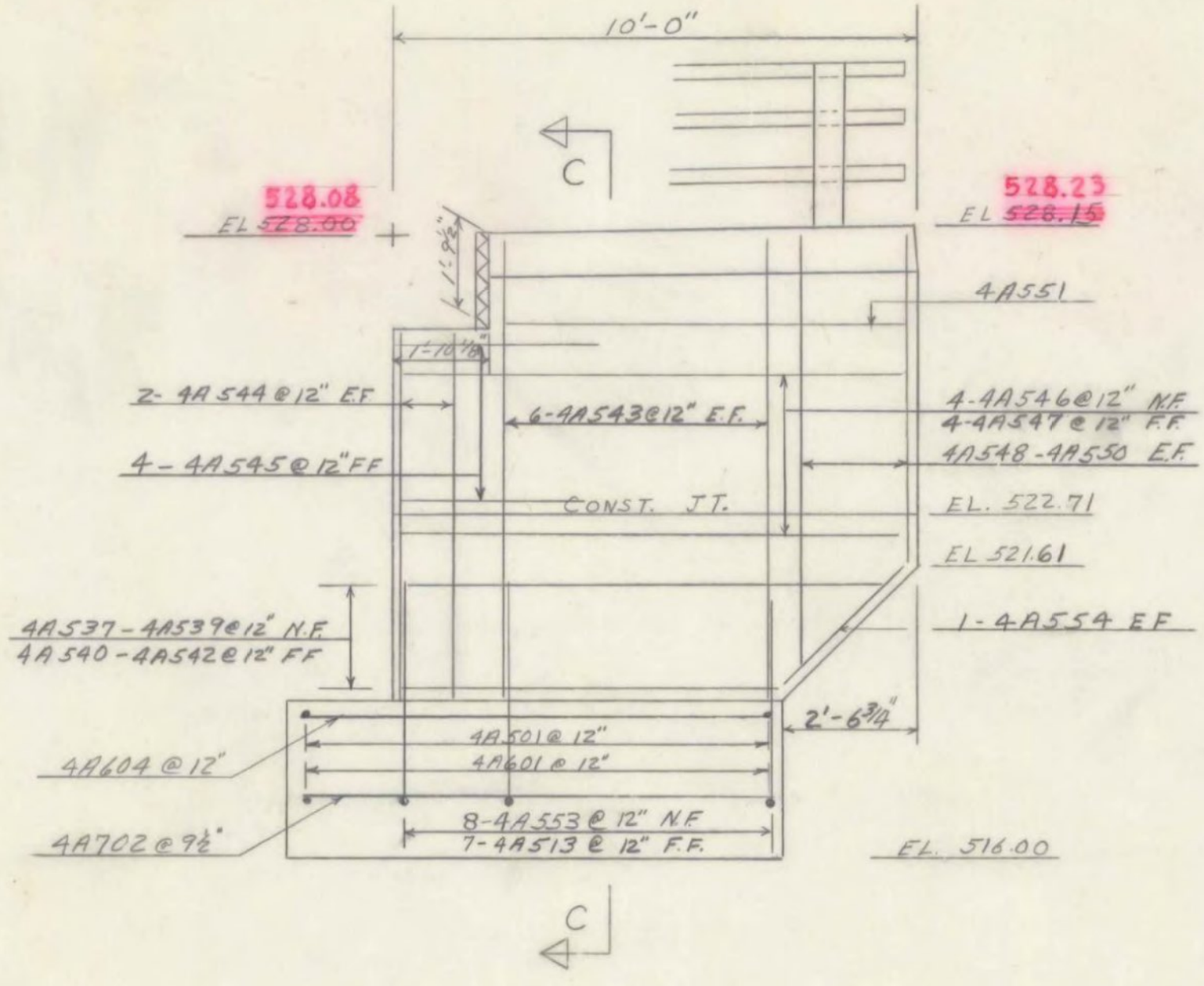
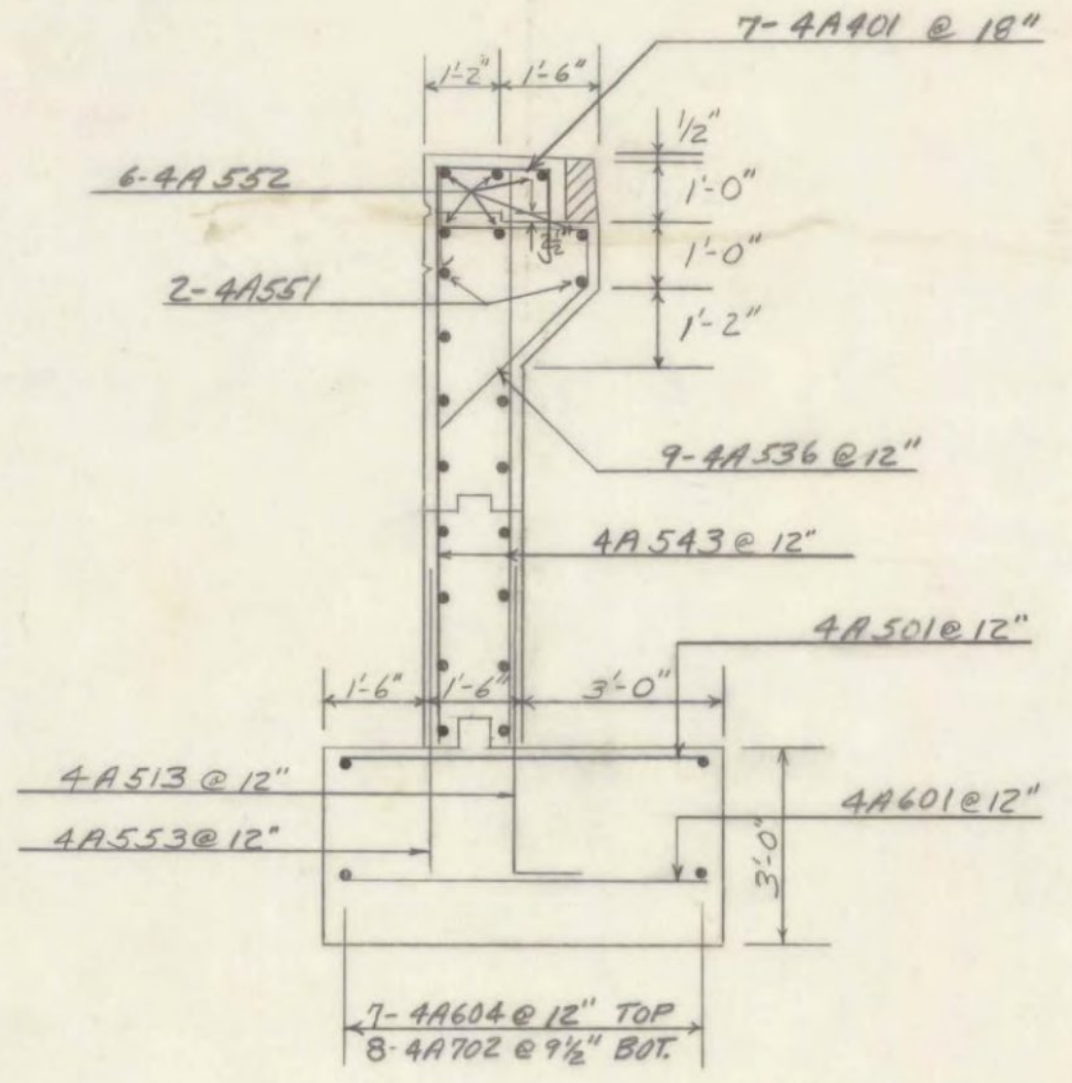


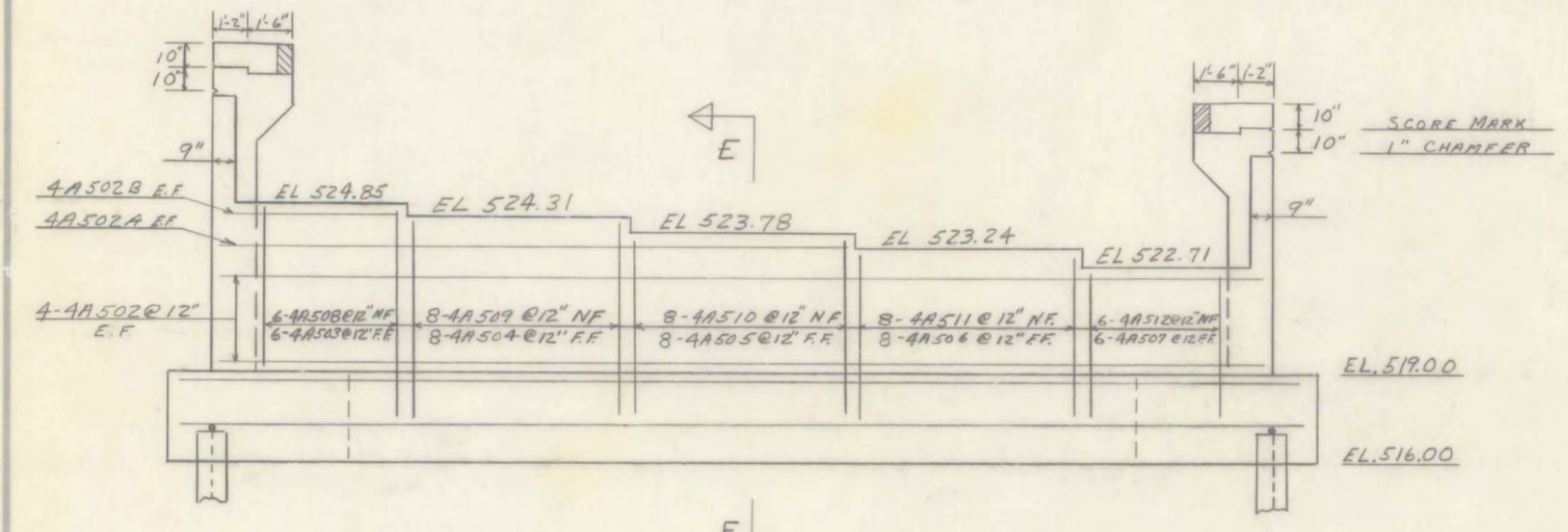
PLAN
1/4" = 1'-0"



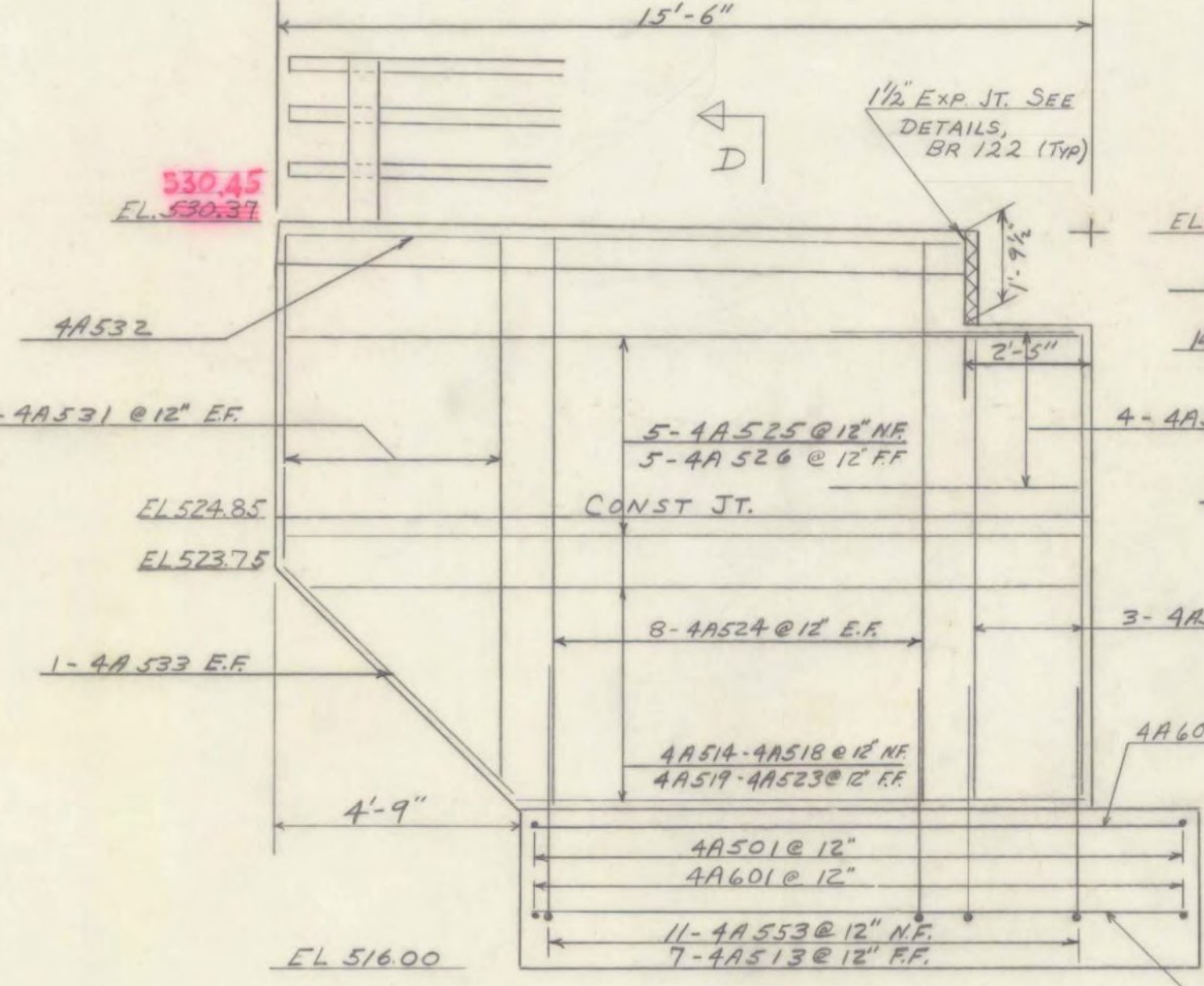
VIEW A-A
3/8" = 1'-0"



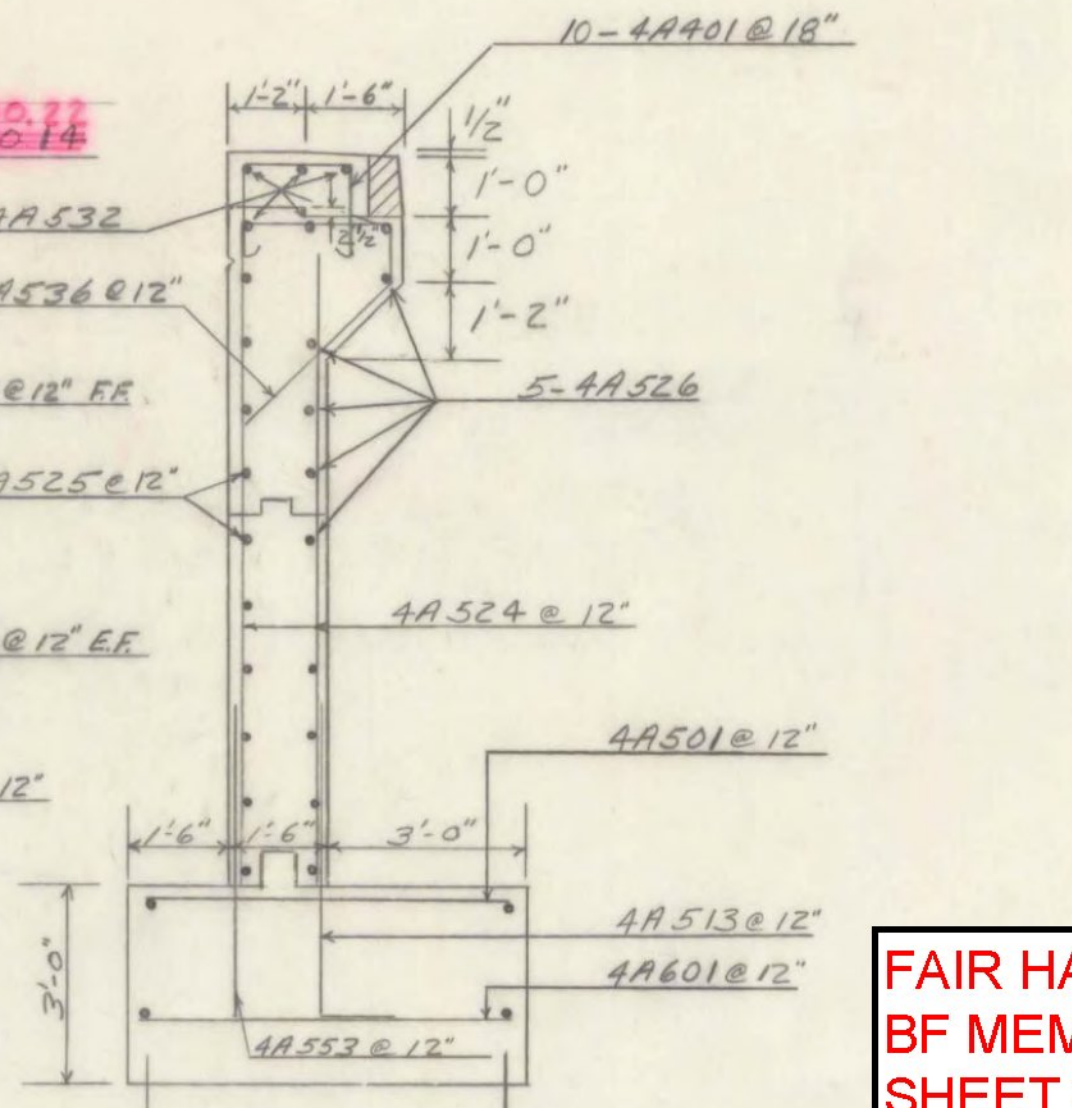
SECTION C-C
3/8" = 1'-0"



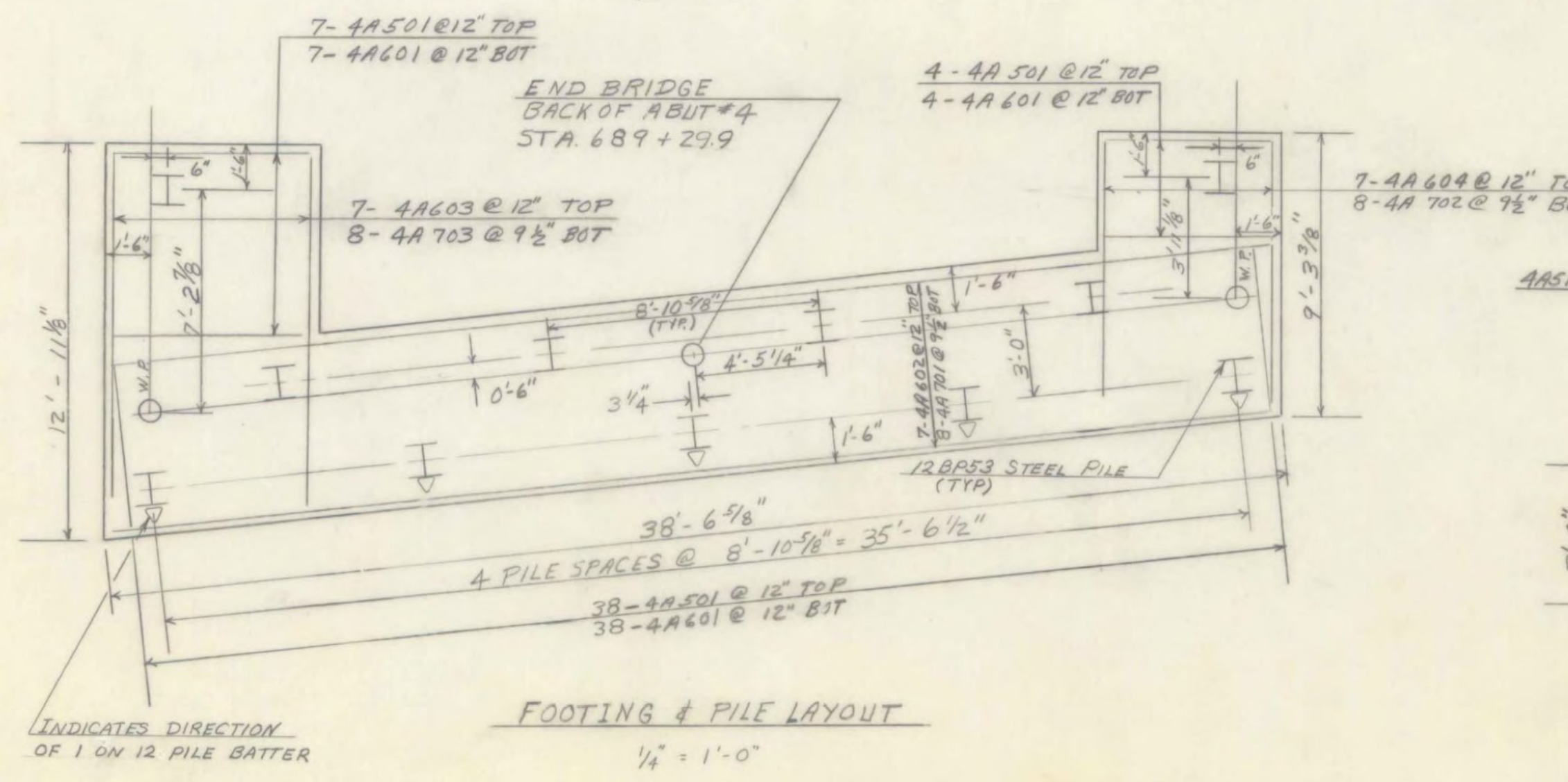
ELEVATION
1/4" = 1'-0"



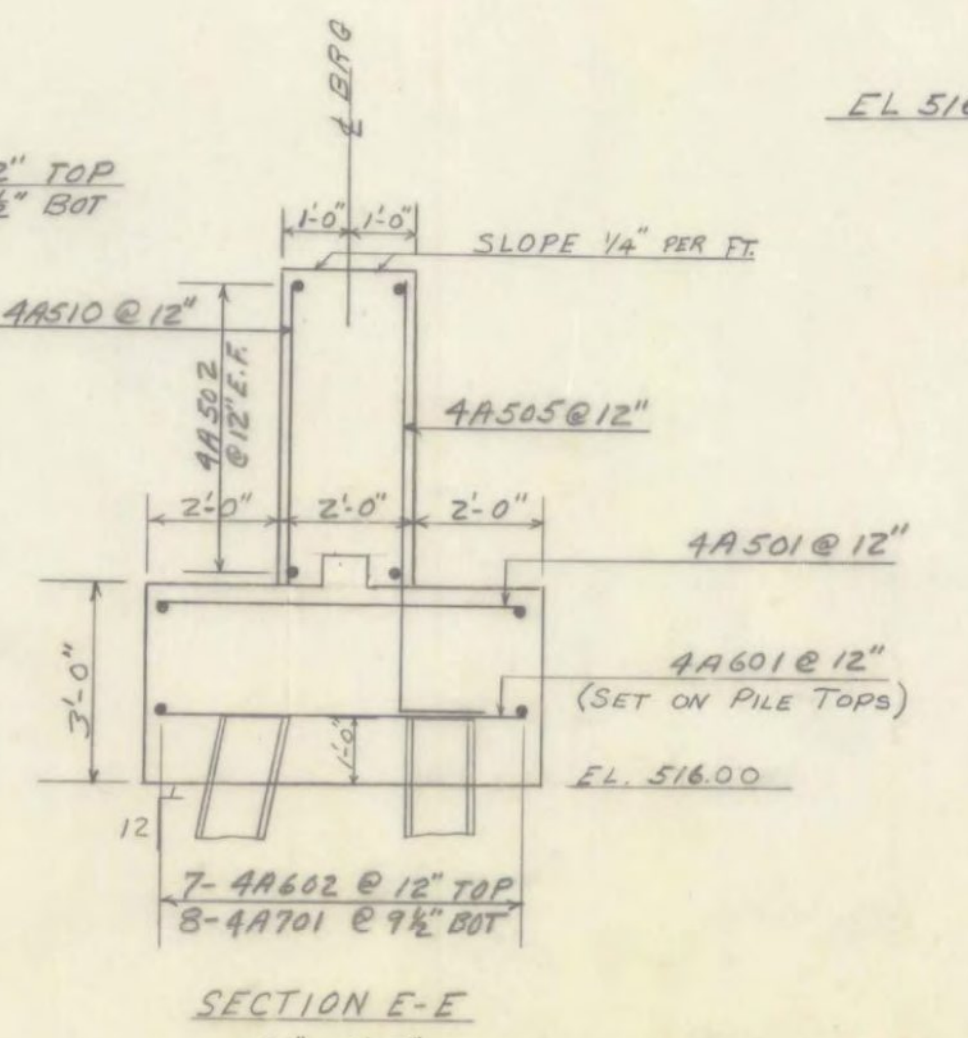
VIEW B-B
3/8" = 1'-0"



SECTION D-D
3/8" = 1'-0"



FOOTING & PILE LAYOUT
1/4" = 1'-0"



SECTION E-E
3/8" = 1'-0"

- NOTES:
1. FOR ABUTMENT NOTES SEE BR 108.
 2. MAXIMUM PILE LOADING IS 90 KIPS PER PILE.
 3. FINISH GRADE OF E.B. BRIDGE RAISED 0.08'

No Piles	Size	Est. Length of Piles	Splices Allowed for Piles not exceeding Plan Length (to be paid for only if used)	Splices Estimated for Piles exceeding Plan Length (to be paid for only if used)
11	12BP53	90	11	2

FAIR HAVEN - WEST RUTLAND
BF MEMB (35)
SHEET 32 OF 44
BRIDGE NO. 13E
FOR REFERENCE ONLY

STATE OF VERMONT
DEPARTMENT OF HIGHWAYS
PROJECT WEST RUTLAND
TOWN OF WEST RUTLAND
ROAD NO. US 4 STA. 687+50
US 4 OVER 24TH R.R. CASTLETON R.
ABUTMENT #4 (E.B.)
SCALE AS NOTED
IN CHARGE W. SPIEN
DRAWN BY B. BIRKING CHECKED BY A. COLICH 3-66
PROJECT NO. AD 030-1(10)
SHEET 32 OF 359 BR 112