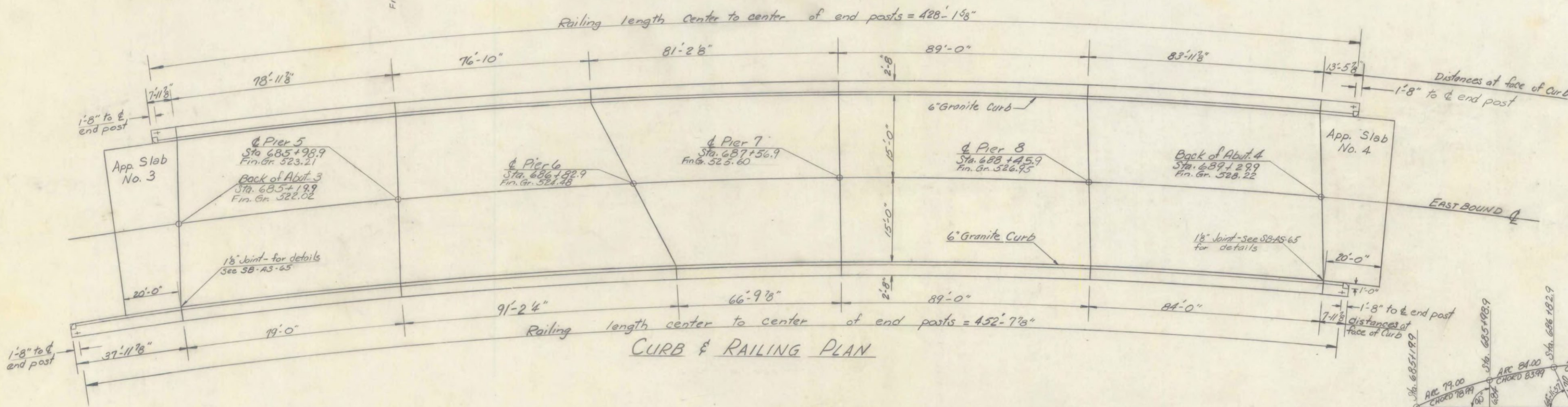


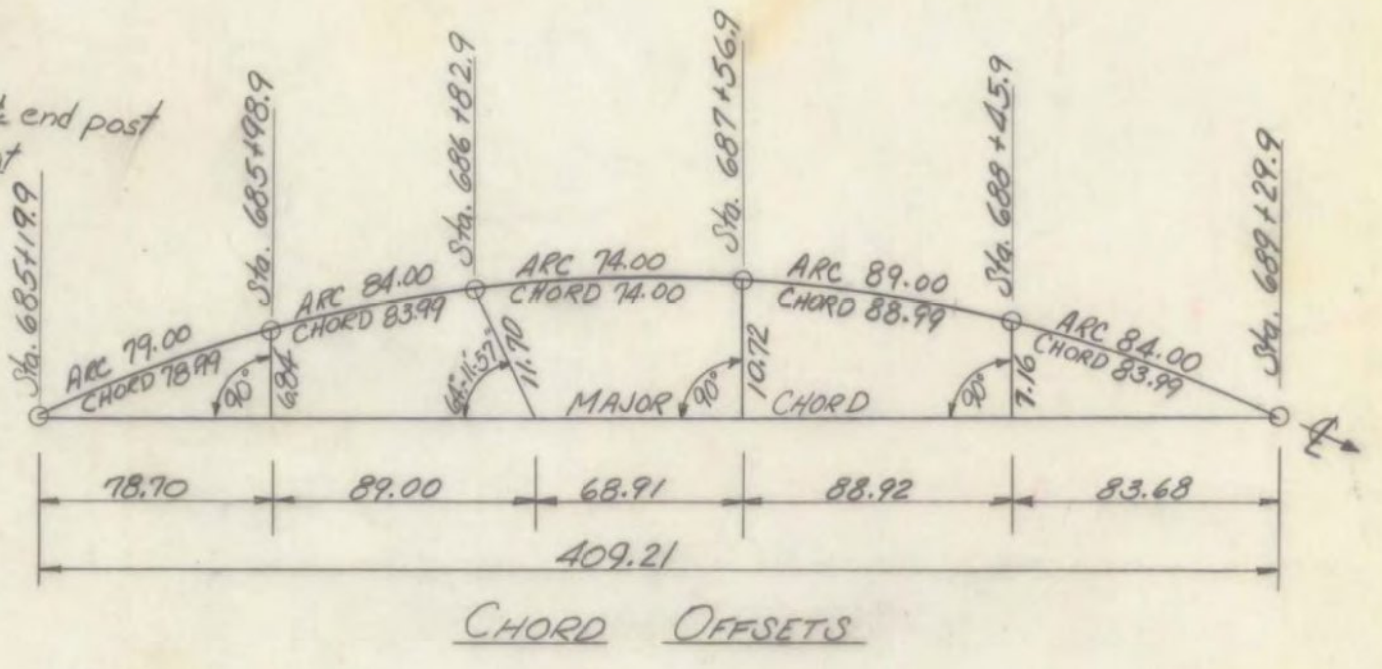
FRAMING PLAN



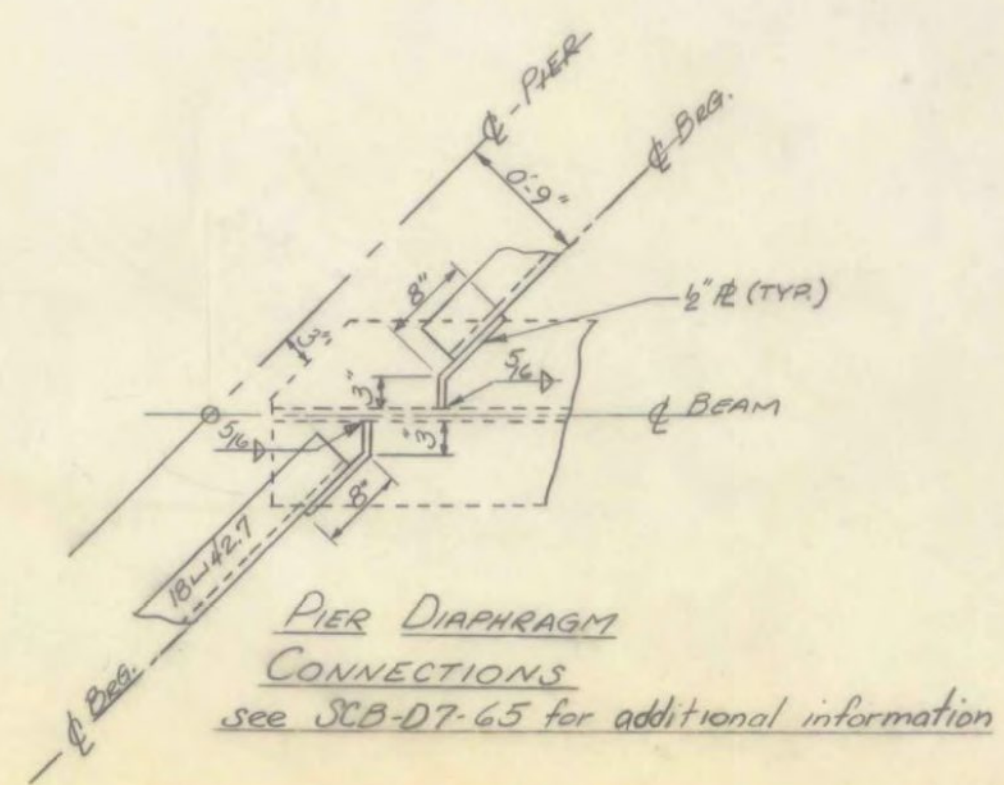
CURB & RAILING PLAN

NOTES:
 1. For Superstructure notes see Br 106
 2. All expansion bearing devices on the eastbound lane shall be as per SCB-DB-65, detail B

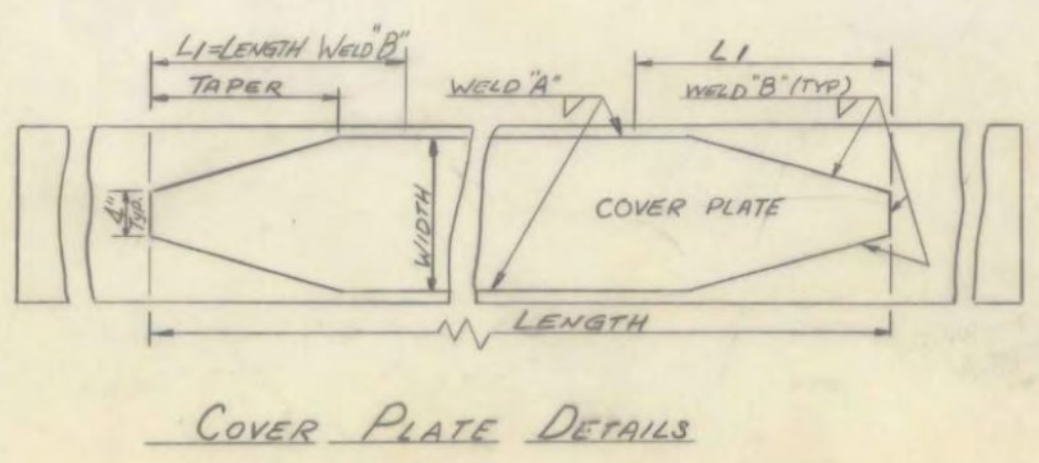
FAIR HAVEN - WEST RUTLAND
 BF MEMB (35)
 SHEET 30 OF 44
 BRIDGE NO. 13E
 FOR REFERENCE ONLY



CHORD OFFSETS



PIER DIAPHRAGM CONNECTIONS
 see SCB-D7-65 for additional information



COVER PLATE DETAILS

SPAN	BEAM NO.	CAMBER	SIZE	LENGTH C-C OF BRG.	COVER PLATE (SEE SCB-D7-65)				SPIRAL PITCH FOR SHEAR CURVE (SEE SCB-D7-65)						
					LENGTH	WIDTH	THICKNESS	TAPER	WELD "A"	WELD "B"	L1	0'-10"	10'-20"	20'-30"	30'-40"
6	ALL	3/8"	36WF194	77.24	49-10	10"	1 1/2"	1'-0"	5/16	1/2	2'-0"	double @ 7"	single @ 4 1/2"	single @ 6"	---
	31	3/8"	36WF194	75.26	47-1	10"	1 1/2"	1'-0"	5/16	1/2	1'-9 1/2"	double @ 5 1/2"	double @ 6 1/2"	single @ 4 1/2"	single @ 5 1/2"
	32	3/4"	36WF194	78.87	52-9	10"	1 1/2"	1'-0"	5/16	1/2	2'-3"	double @ 5 1/2"	double @ 6 1/2"	single @ 4 1/2"	single @ 5 1/2"
	33	3/8"	36WF230	82.43	49-7	14"	1 1/2"	1'-6"	5/16	1/2	1-11"	" 5 1/2"	" 6 1/2"	" 4 1/2"	" 5 1/2"
	34	3/8"	36WF230	85.98	56-8	14"	1 1/2"	1'-6"	5/16	1/2	2-7"	" 5 1/2"	" 6 1/2"	" 4"	" 5"
7	35	3/8"	36WF230	89.61	63-2	14"	1 3/8"	1'-6"	3/8	1/2	3-2"	" 5 1/2"	" 6 1/2"	" 4"	" 5"
	36	3/8"	36WF194	79.59	54-11	10"	1 1/2"	1'-0"	5/16	1/2	2'-6"	double @ 5 1/2"	double @ 6 1/2"	single @ 4 1/2"	single @ 5 1/2"
	37	3"	36WF194	76.03	46-5	10"	1 1/2"	1'-0"	5/16	1/2	1'-9 1/2"	" 5"	" 6 1/2"	" 4"	" 5 1/2"
	38	2 1/8"	36WF194	72.41	50-0	10"	1 1/2"	1'-0"	5/16	1/2	2-0"	" 5"	" 6"	" 4"	" 5 1/2"
	39	2 3/4"	36WF150	68.79	46-11	10"	1 1/2"	1'-0"	5/16	1/2	1-9 1/2"	" 5"	" 6 1/2"	" 4 1/2"	" 5 1/2"
8	40	2 3/8"	36WF150	65.23	41-1	10"	1 1/2"	1'-0"	5/16	1/2	1-9 1/2"	" 5"	" 6 1/2"	" 4 1/2"	" 5 1/2"
	ALL	3/8"	36WF230	87.50	59-5	14"	1 1/2"	1'-6"	5/16	1/2	2-10"	double @ 5 1/2"	double @ 6 1/2"	" @ 4 1/2"	" 5"
9	ALL	3/8"	36WF230	87.50	59-5	14"	1 1/2"	1'-6"	5/16	1/2	2-10"	double @ 5 1/2"	double @ 6 1/2"	" @ 4 1/2"	" 5"
	ALL	3/2"	36WF230	82.24	49-5	14"	1 1/2"	1'-6"	5/16	1/2	1-11"	double @ 5 1/2"	" @ 7"	" @ 4 1/2"	" @ 6"
10	ALL	3/8"	36WF230	82.24	49-5	14"	1 1/2"	1'-6"	5/16	1/2	1-11"	double @ 5 1/2"	" @ 7"	" @ 4 1/2"	" @ 6"
	ALL	3/2"	36WF230	82.24	49-5	14"	1 1/2"	1'-6"	5/16	1/2	1-11"	double @ 5 1/2"	" @ 7"	" @ 4 1/2"	" @ 6"

STATE OF VERMONT
 DEPARTMENT OF HIGHWAYS
 PROJECT WEST RUTLAND
 TOWN OF WEST RUTLAND
 ROUTE NO US 4 STA. 687+50
 USA over R.R. and CASTLETON RIVER
 EASTBOUND
 FRAMING PLAN & CURB and RAILING PLAN
 SCALE NOT TO SCALE
 IN CHARGE W. Smith
 DRAWN BY ISHAM CHECKED BY D. PERKINS
 PROJECT NO AP 020-1(10)
 SHEET 39 OF 359 BR 107