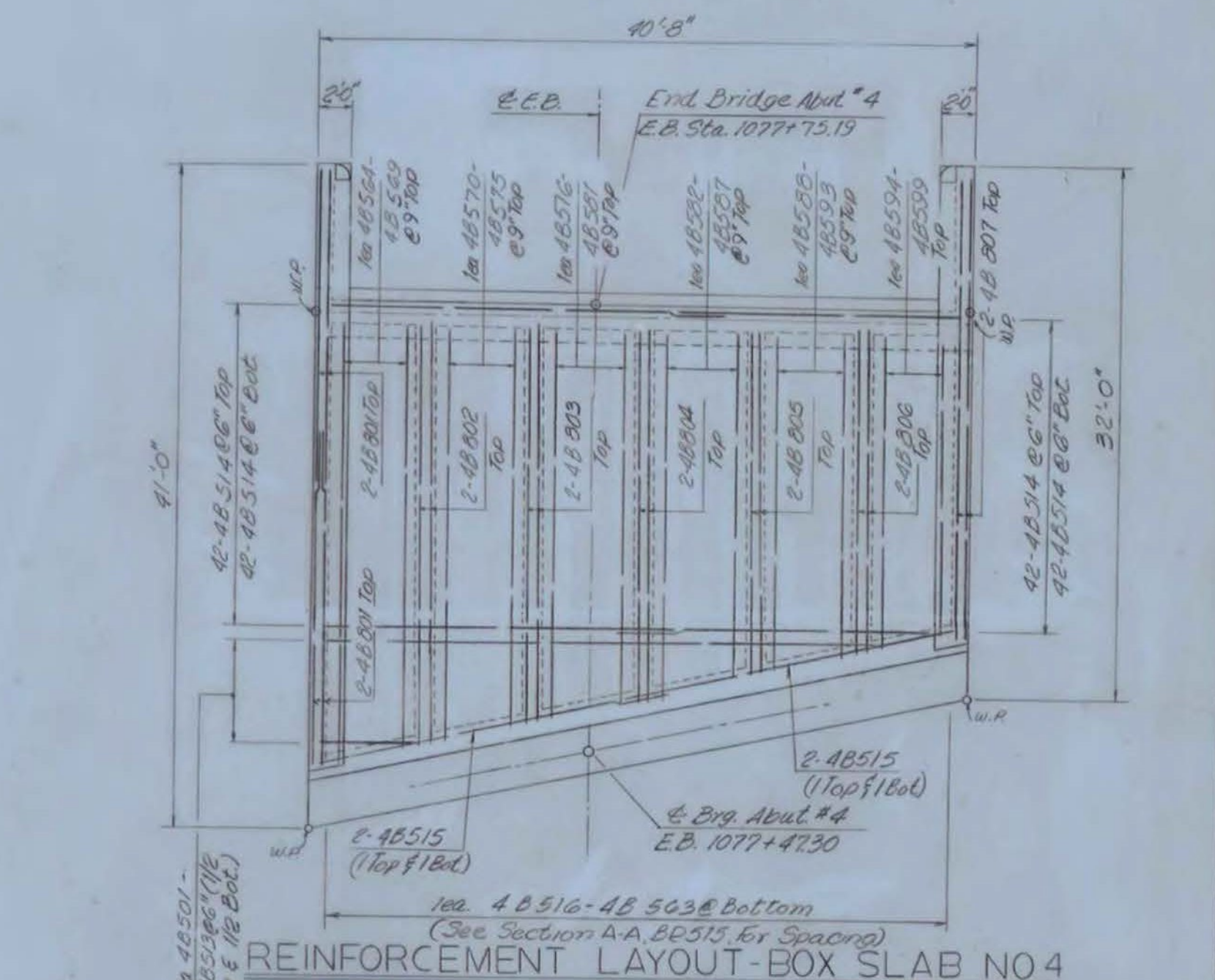
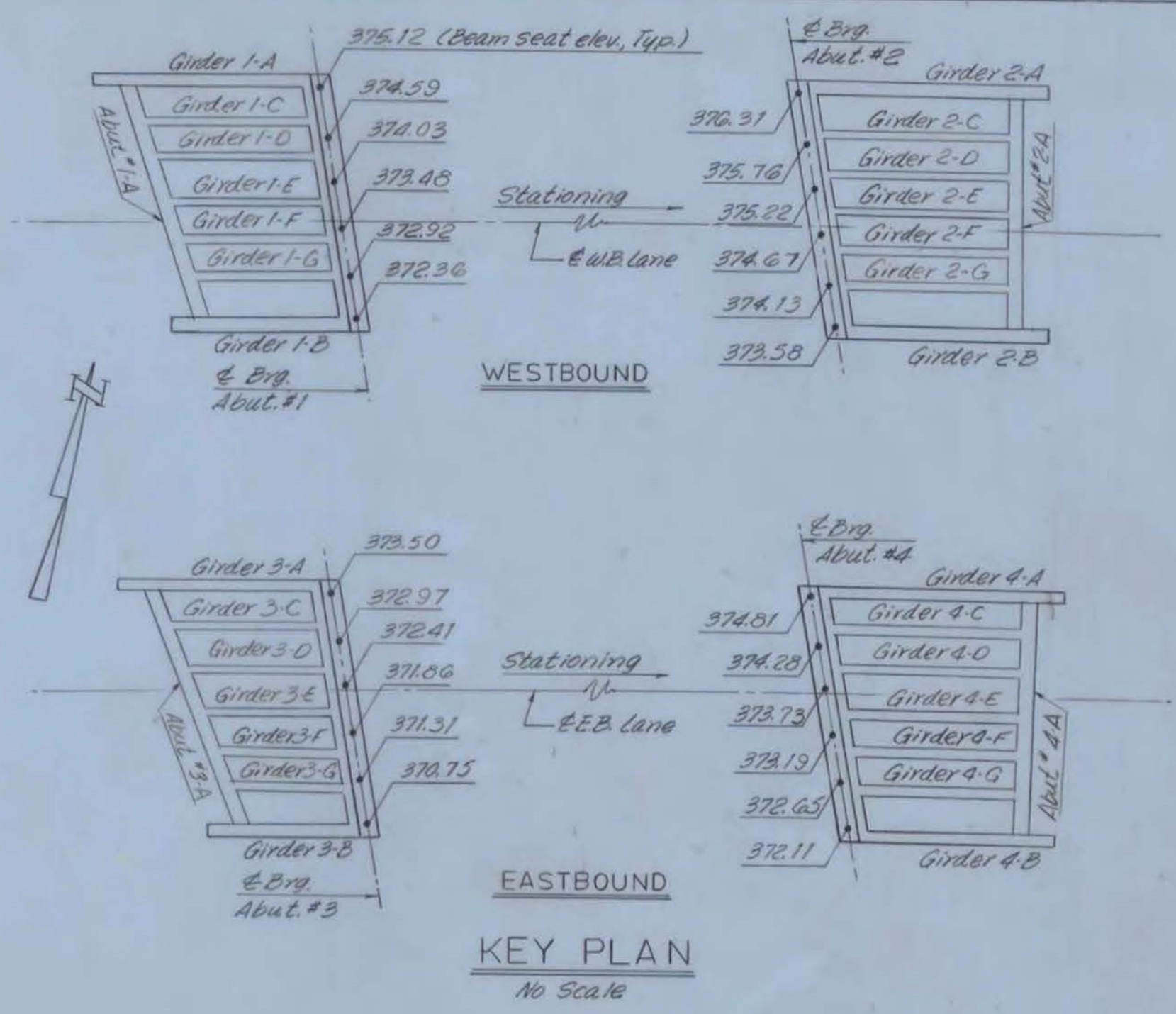
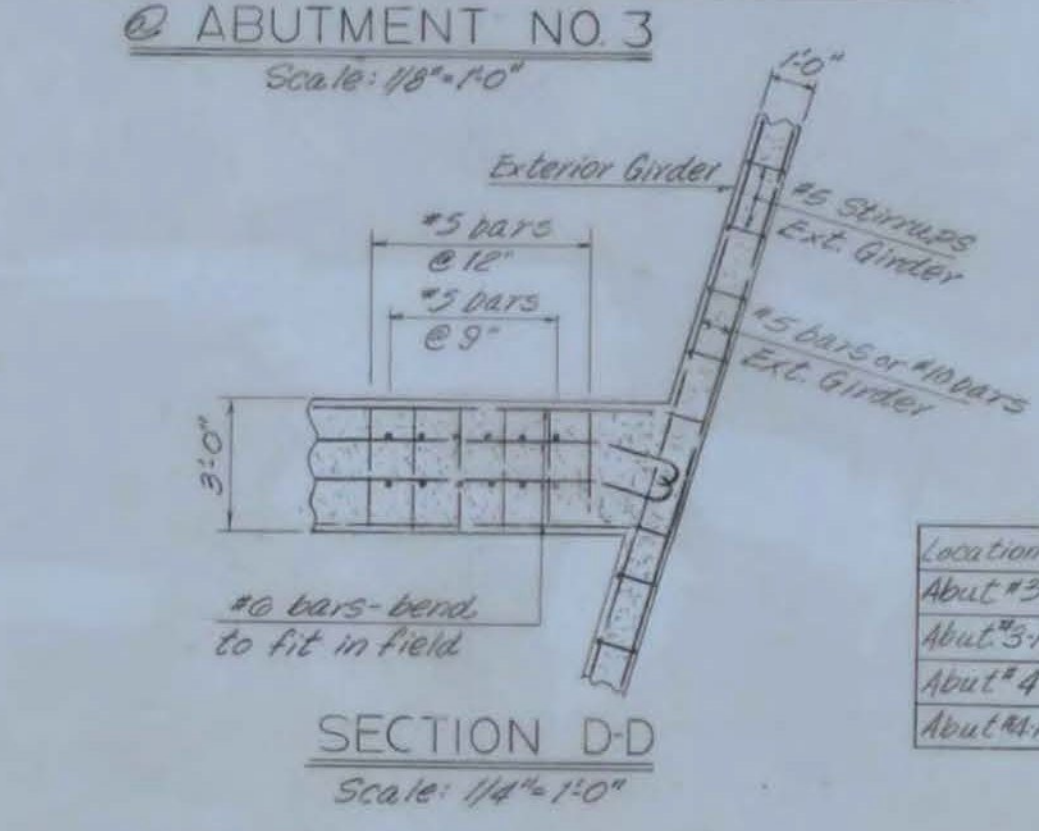
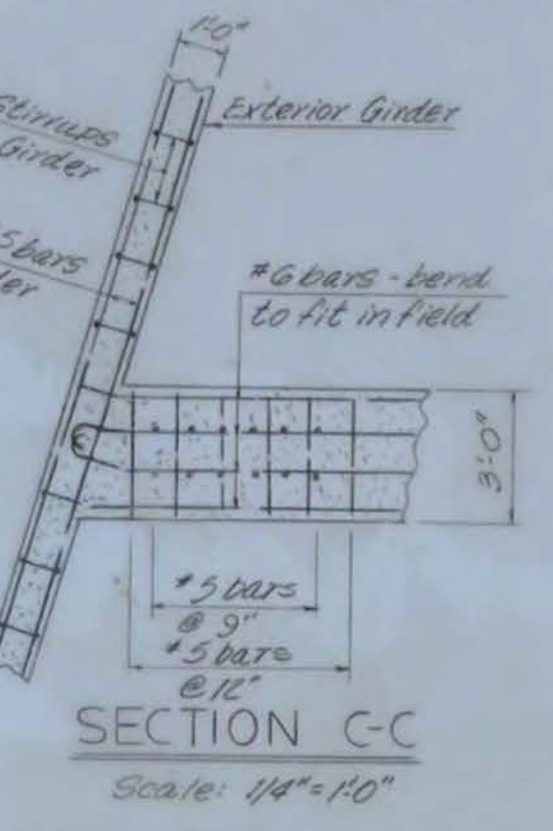
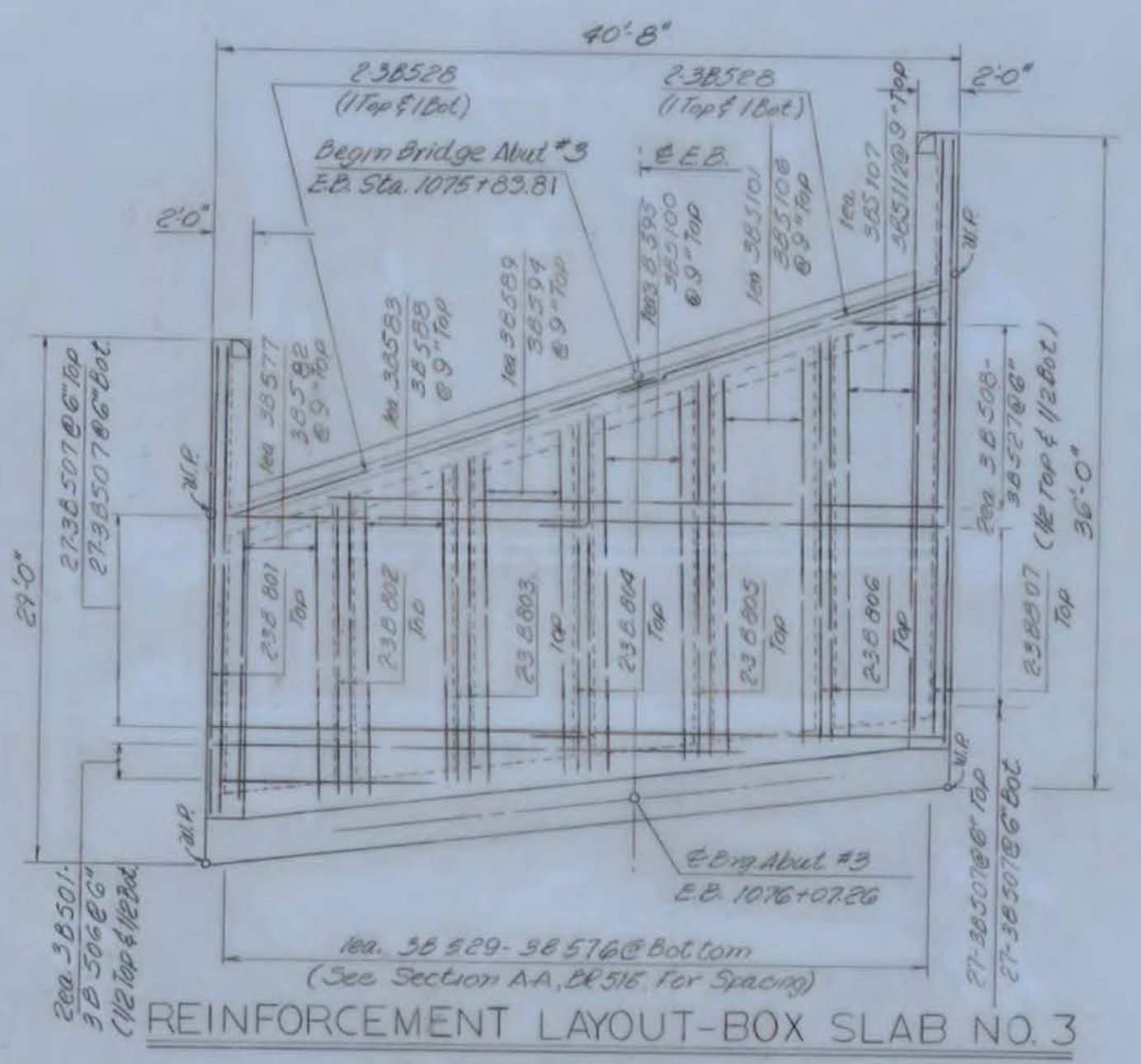


**\*NOTE:**  
If precast section is chosen provide a 1'-0" beam seat as shown in Typical section Abutment. Precast beams shall rest on neoprene pads bonded to the bridge seat and the beam.



- NOTES:**
1. For General Notes, see BR 501.
  2. For additional notes, see B 2 511 & B 2 515.

Location	Number of Piles	Size of Pile	Est. length of Piles
Abut. #3	20	12" Ø	140' to 160'
Abut. #3A	7	12" Ø	155' to 175'
Abut. #4	20	12" Ø	185'
Abut. #4A	7	12" Ø	200'

**PILE TABLE**

**FAIR HAVEN - WEST RUTLAND  
BF MEMB (35)  
SHEET 23 OF 44  
BRIDGE NOS. 5E AND 5W  
FOR REFERENCE ONLY**

**FOOTING DETAILS ABUTS. 3 & 4  
DETAILS & TYPICAL SECTIONS**

MCFARLAND-JOHNSON  
CONSULTING ENGINEERS  
BINGHAMTON, NEW YORK

DESIGNED B.R.K. CHECKED B.R.K. DATE 5-23-68  
DRAWN C.J.P. IN CHARGE H.G.C. SCALE AS NOTED  
PROJECT NO. FO20-1(4) SH 105 OF 532