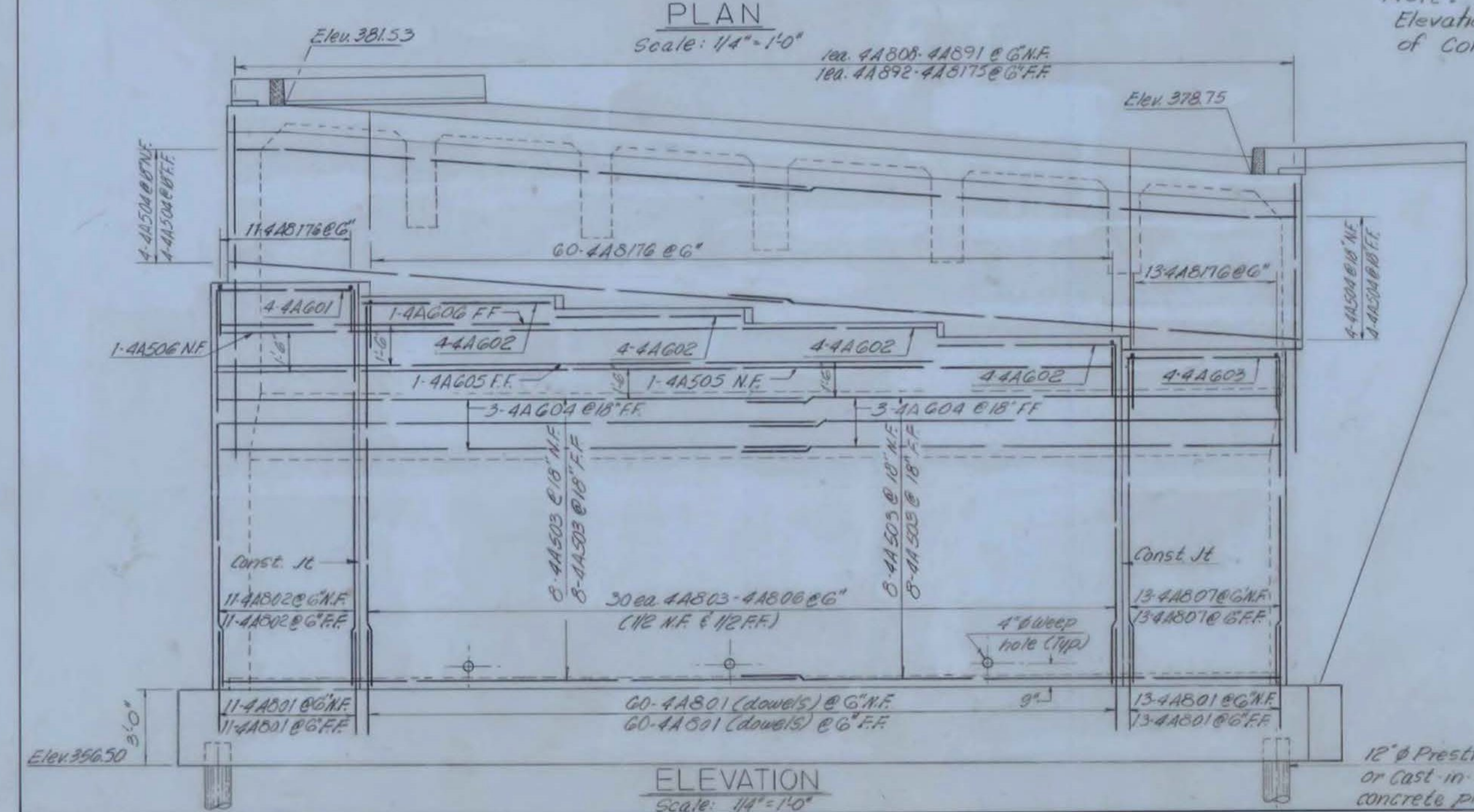


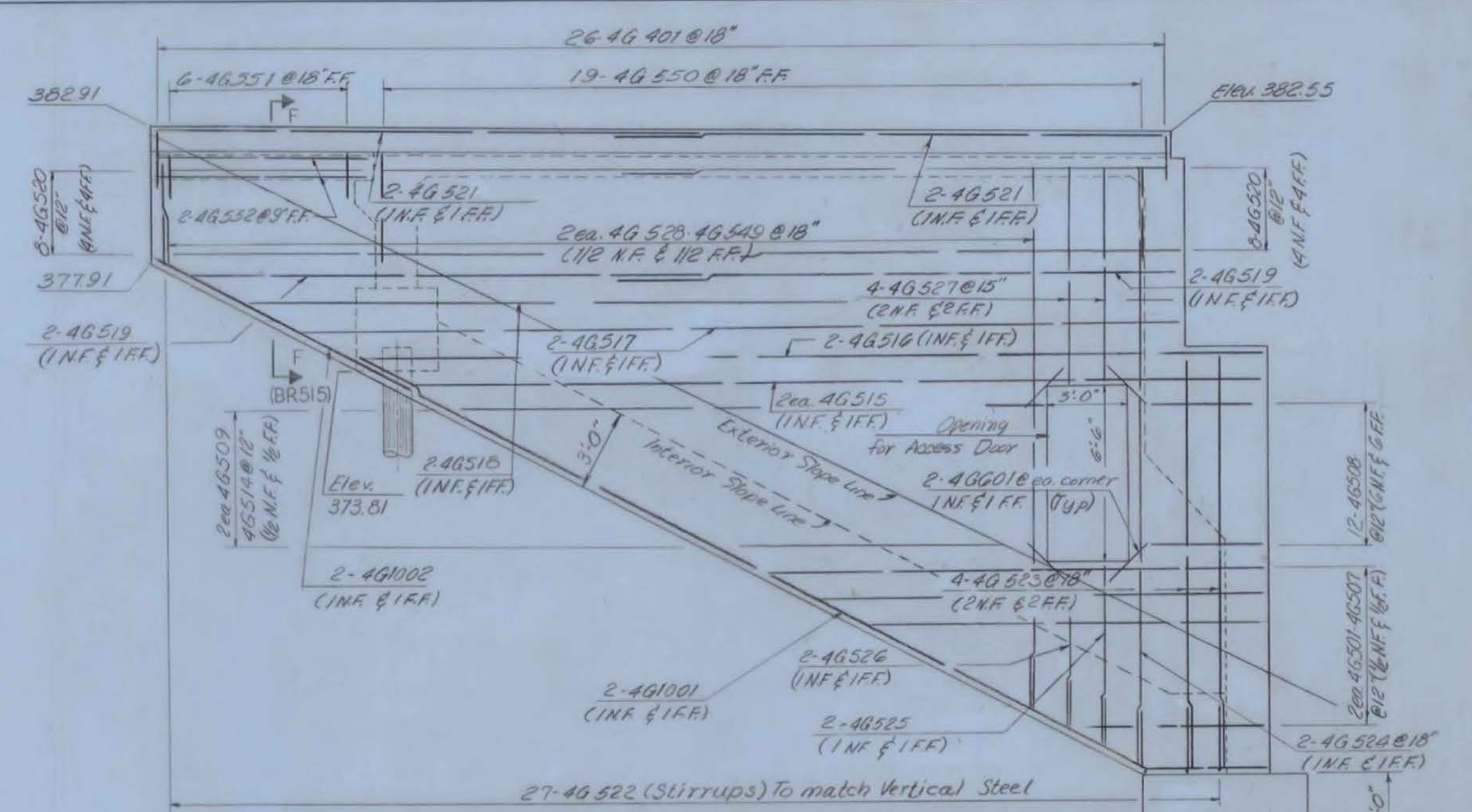
DETAIL A  
No Scale

\*NOTE:  
Elevations are bottom  
of Concrete Girder

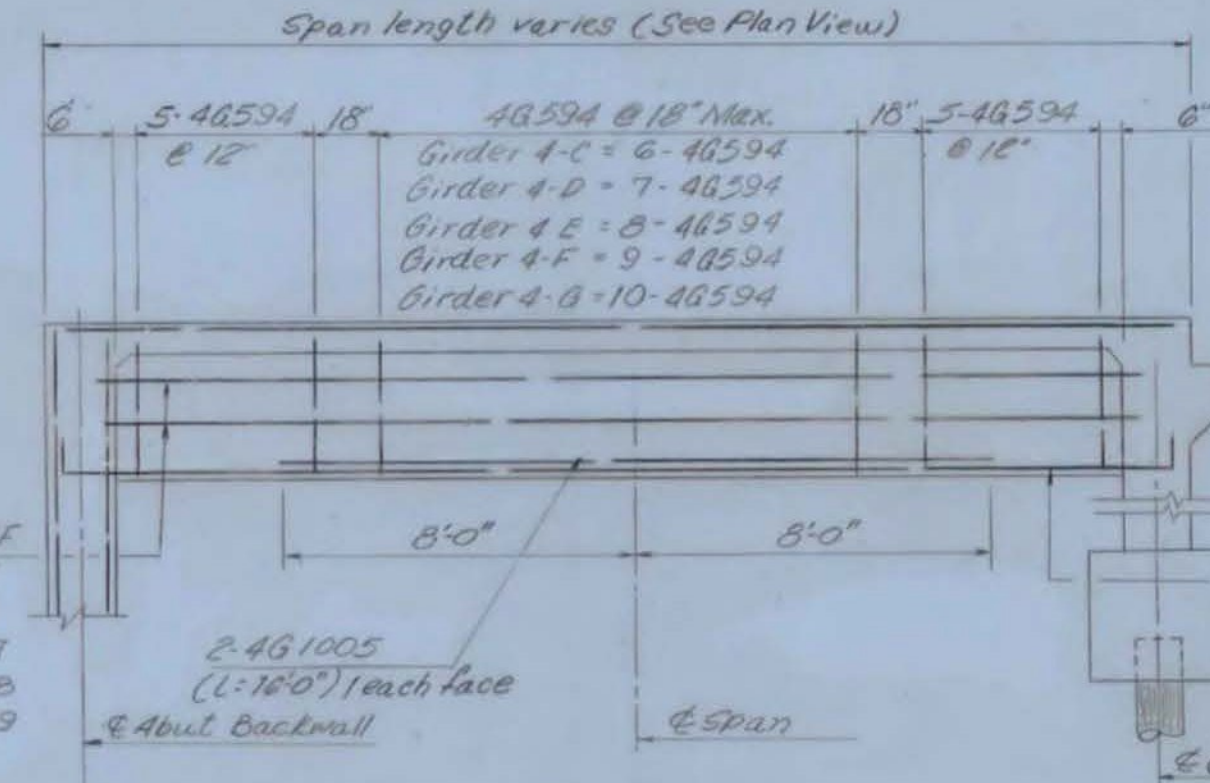


ELEVATION  
Scale: 1/4" = 1'-0"

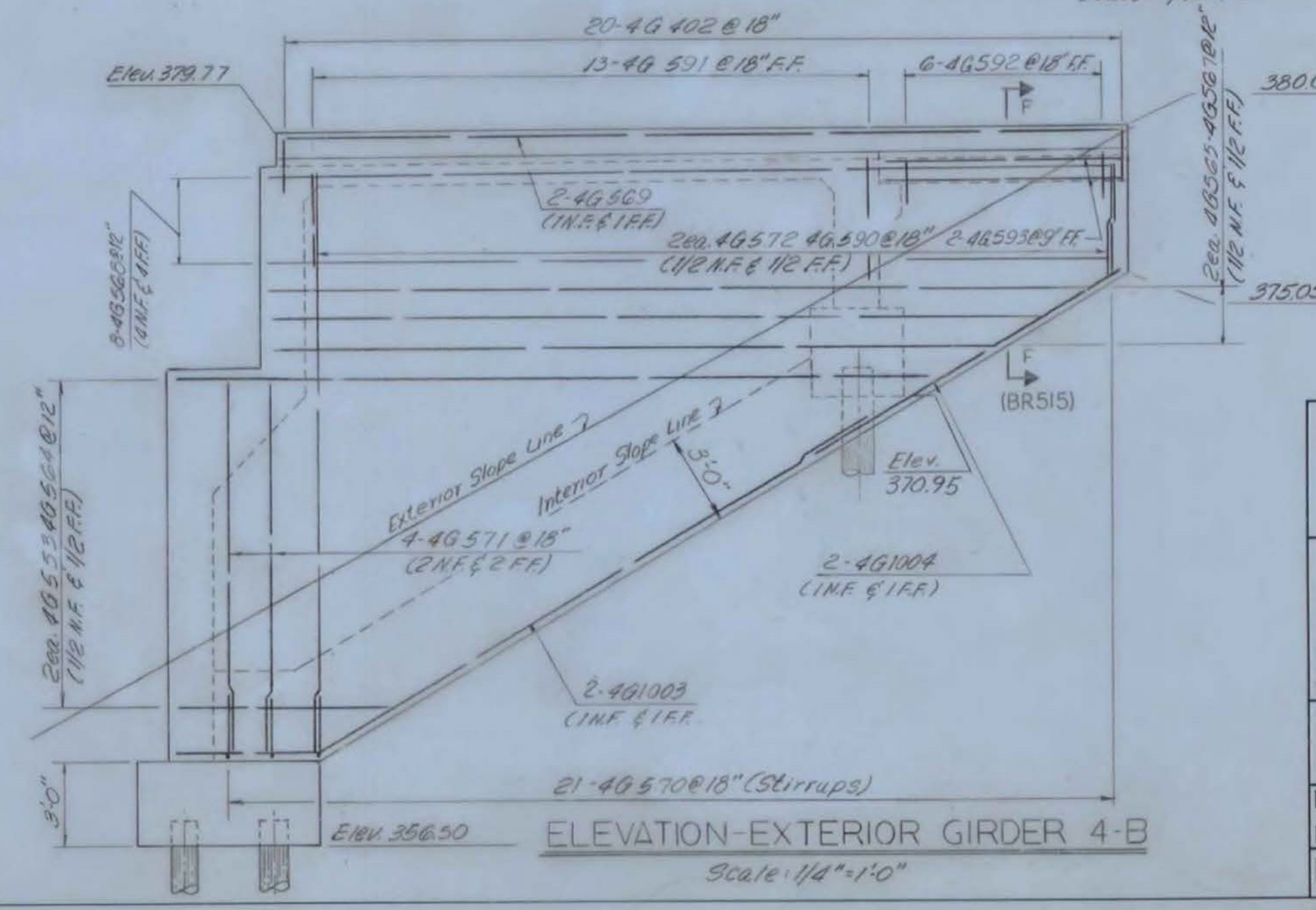
12" Ø Prestressed  
or Cast in Place  
concrete piling (1/4")



ELEVATION-EXTERIOR GIRDER 4-A  
Scale: 1/4" = 1'-0"



ELEVATION-TYPICAL INTERIOR GIRDER  
Scale: 1/4" = 1'-0"



ELEVATION-EXTERIOR GIRDER 4-B  
Scale: 1/4" = 1'-0"

- NOTES:
- 1 For General Notes, see BR501.
  - 2 For additional information, see BR 511 & BR515.

**FAIR HAVEN - WEST RUTLAND  
BF MEMB (35)  
SHEET 21 OF 44  
BRIDGE NOS. 5E AND 5W  
FOR REFERENCE ONLY**

U.S. ROUTE 4  
U.S. RTE. 4 RELOCATION  
OVER VT. 22 A RELOC.  
ABUTMENT NO.4 DETAILS

McFARLAND-JOHNSON  
CONSULTING ENGINEERS  
BINGHAMTON, NEW YORK

DESIGNED BRK CHECKED BRK DATE 5-23-68  
DRAWN CJP IN CHARGE HGC SCALE AS NOTED  
PROJECT NO. F020-1(4) SH 193 OF 532