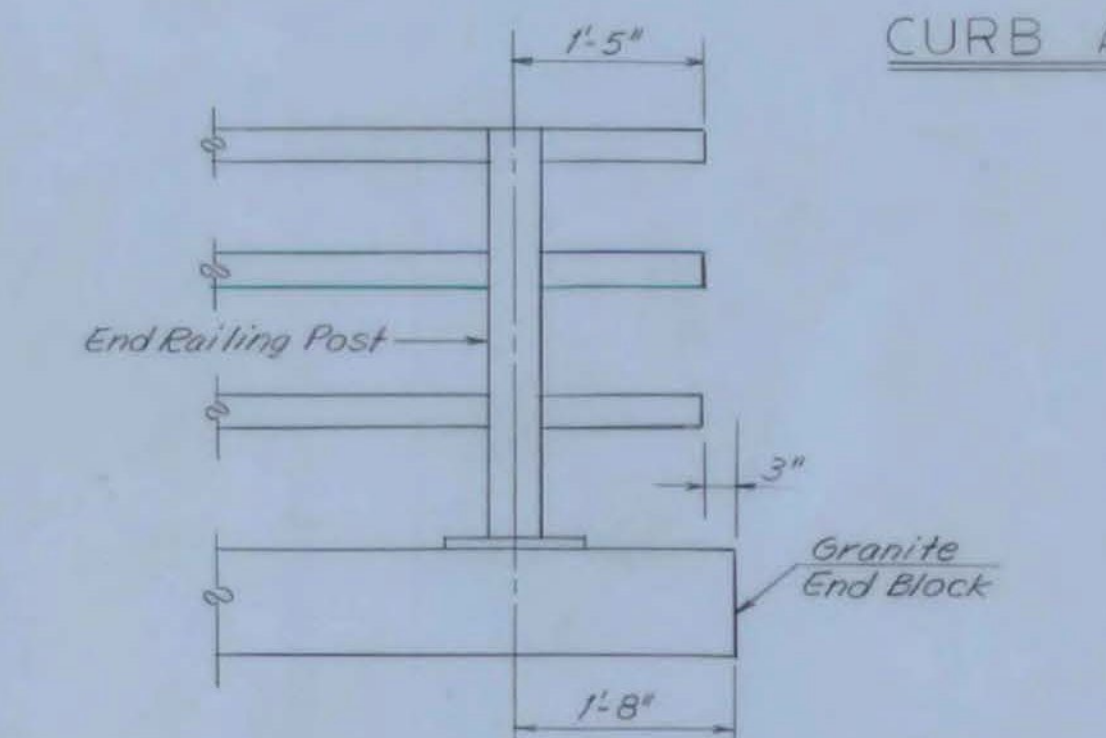
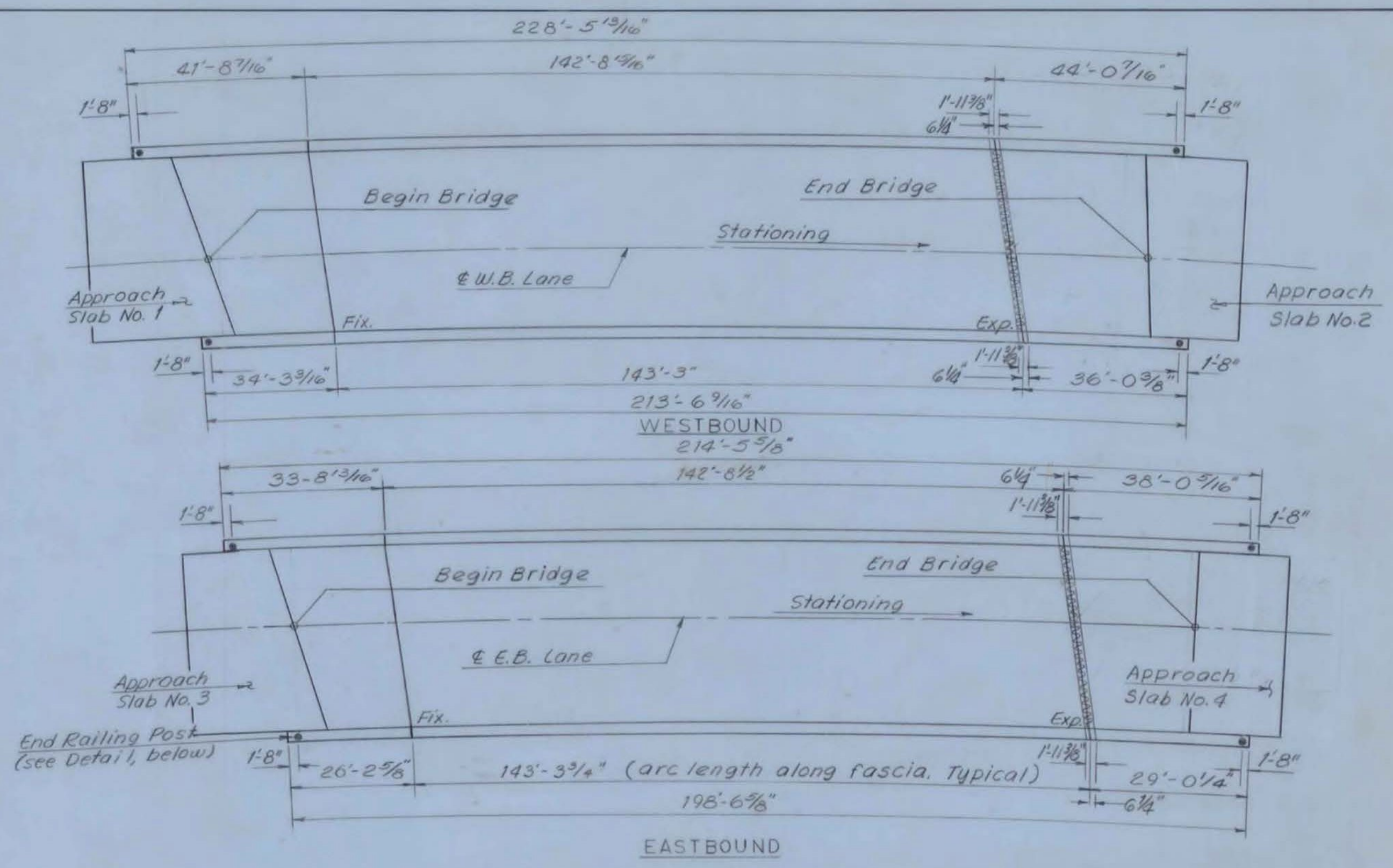
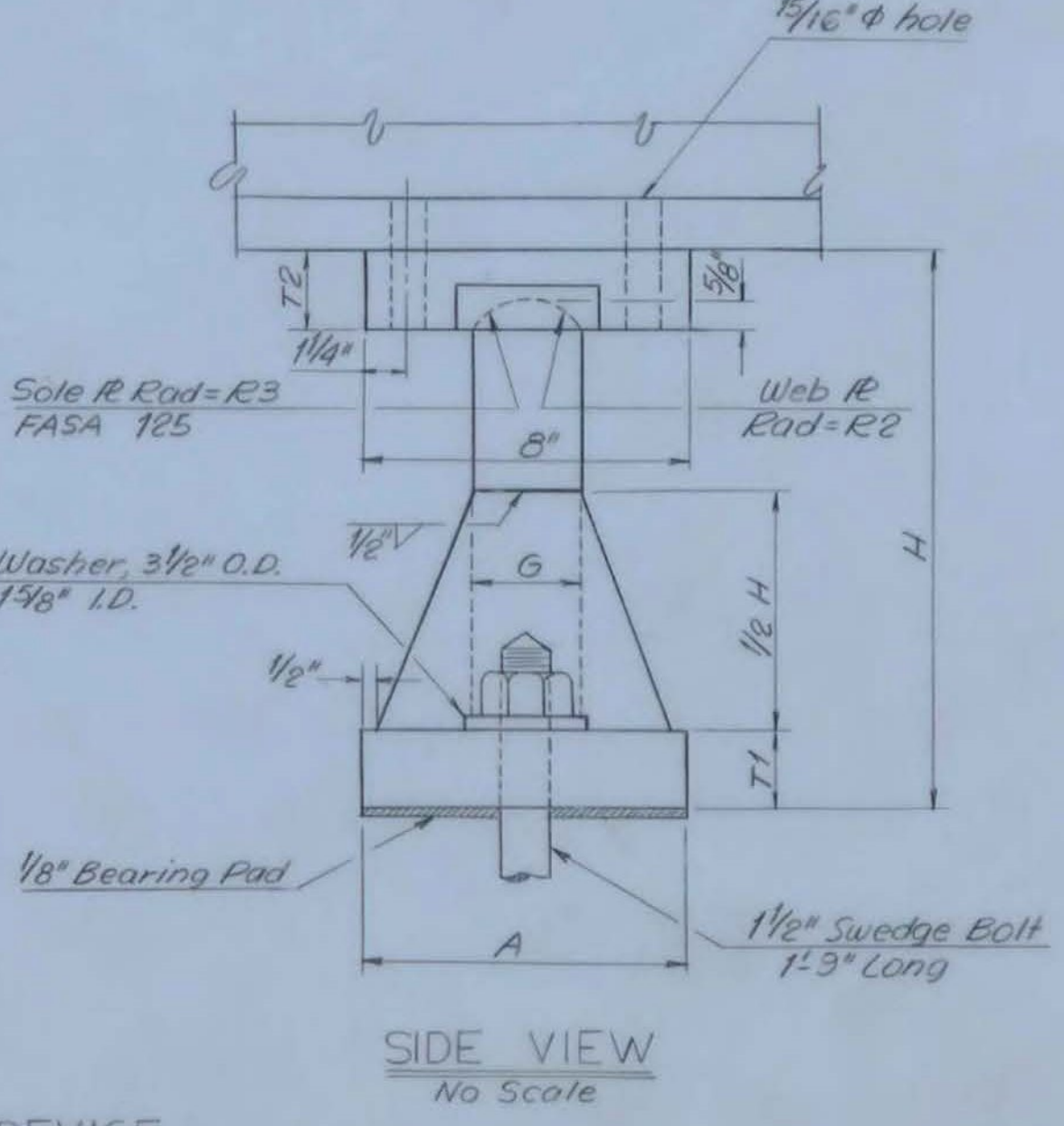
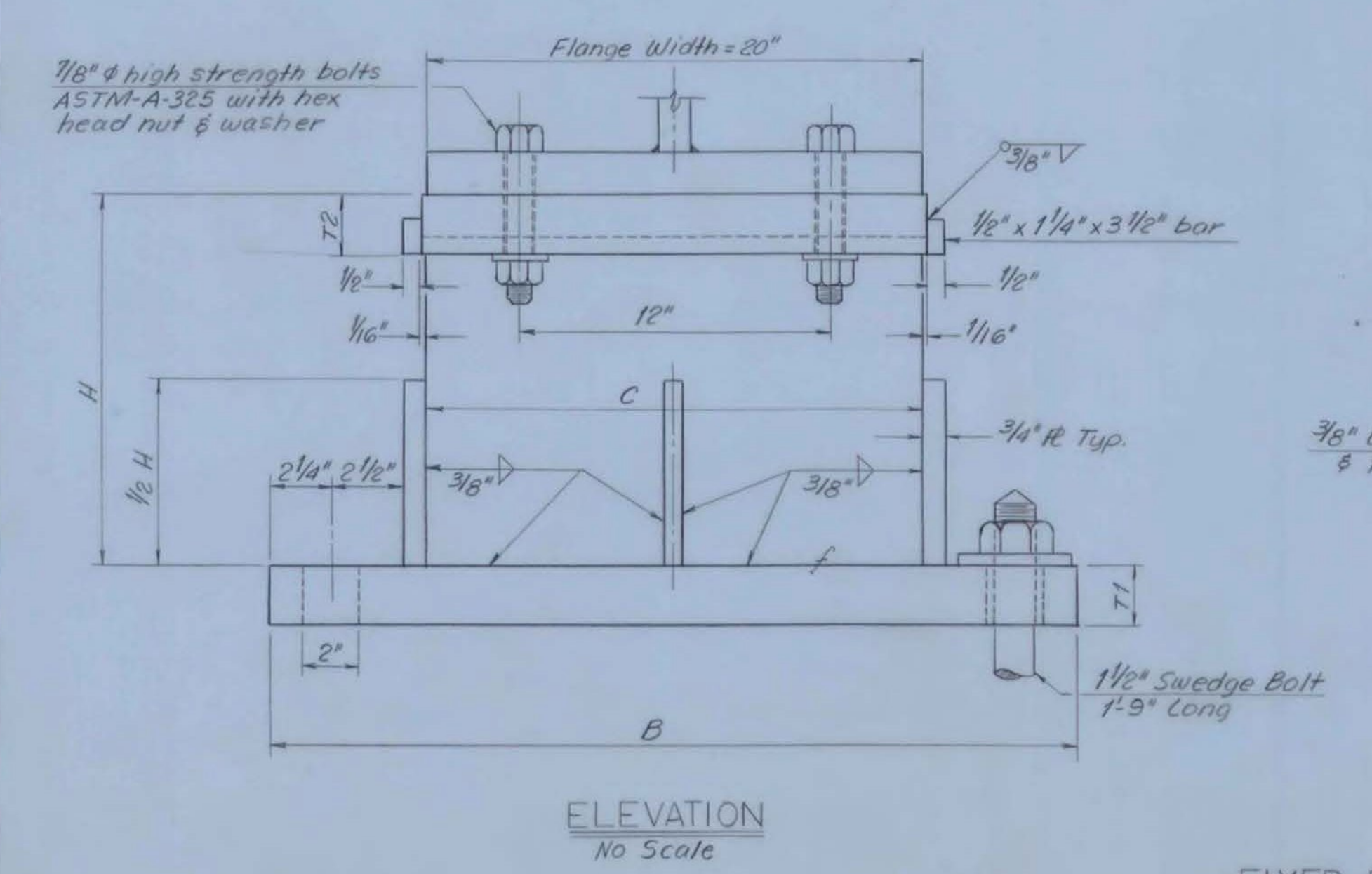
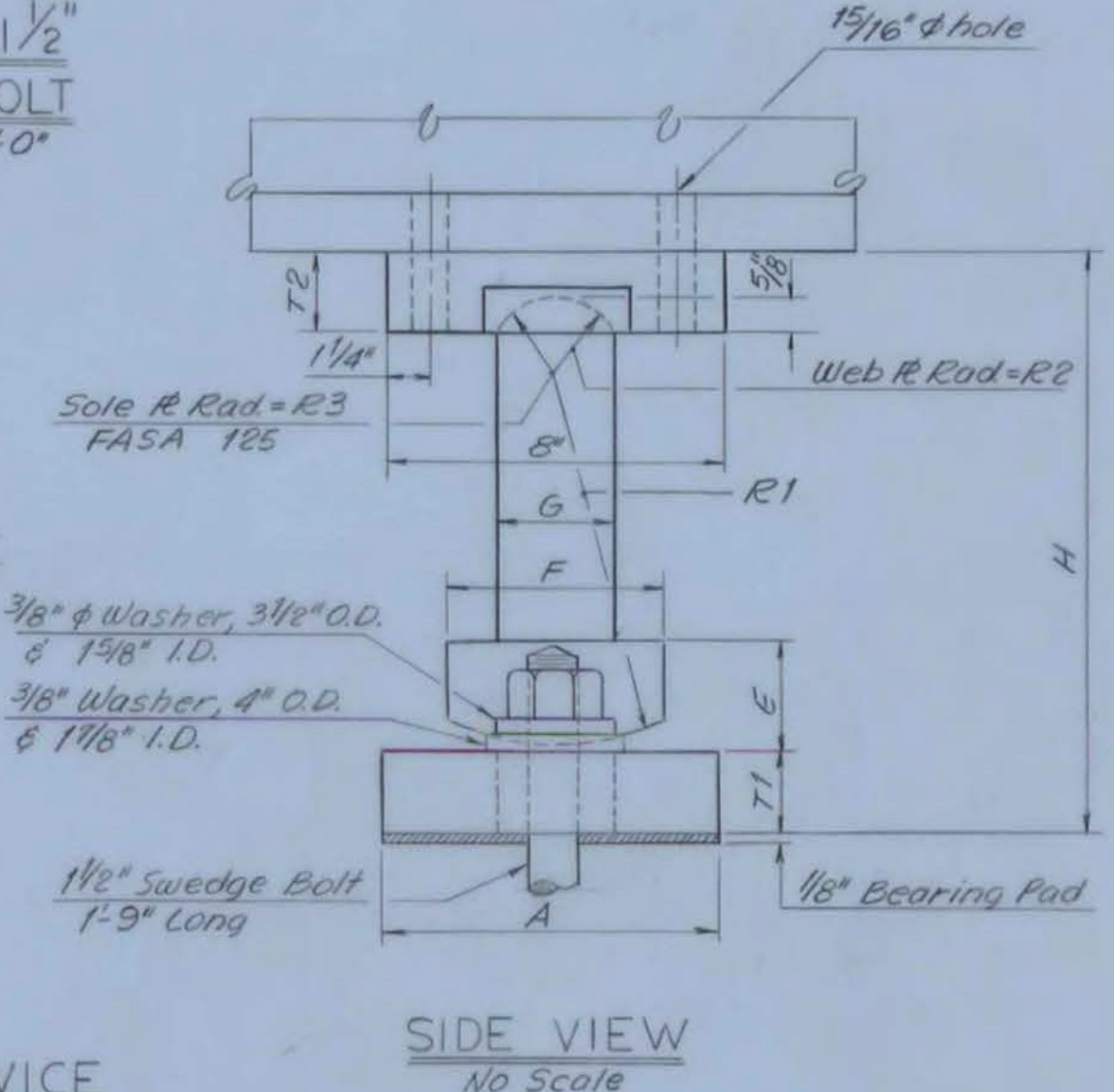
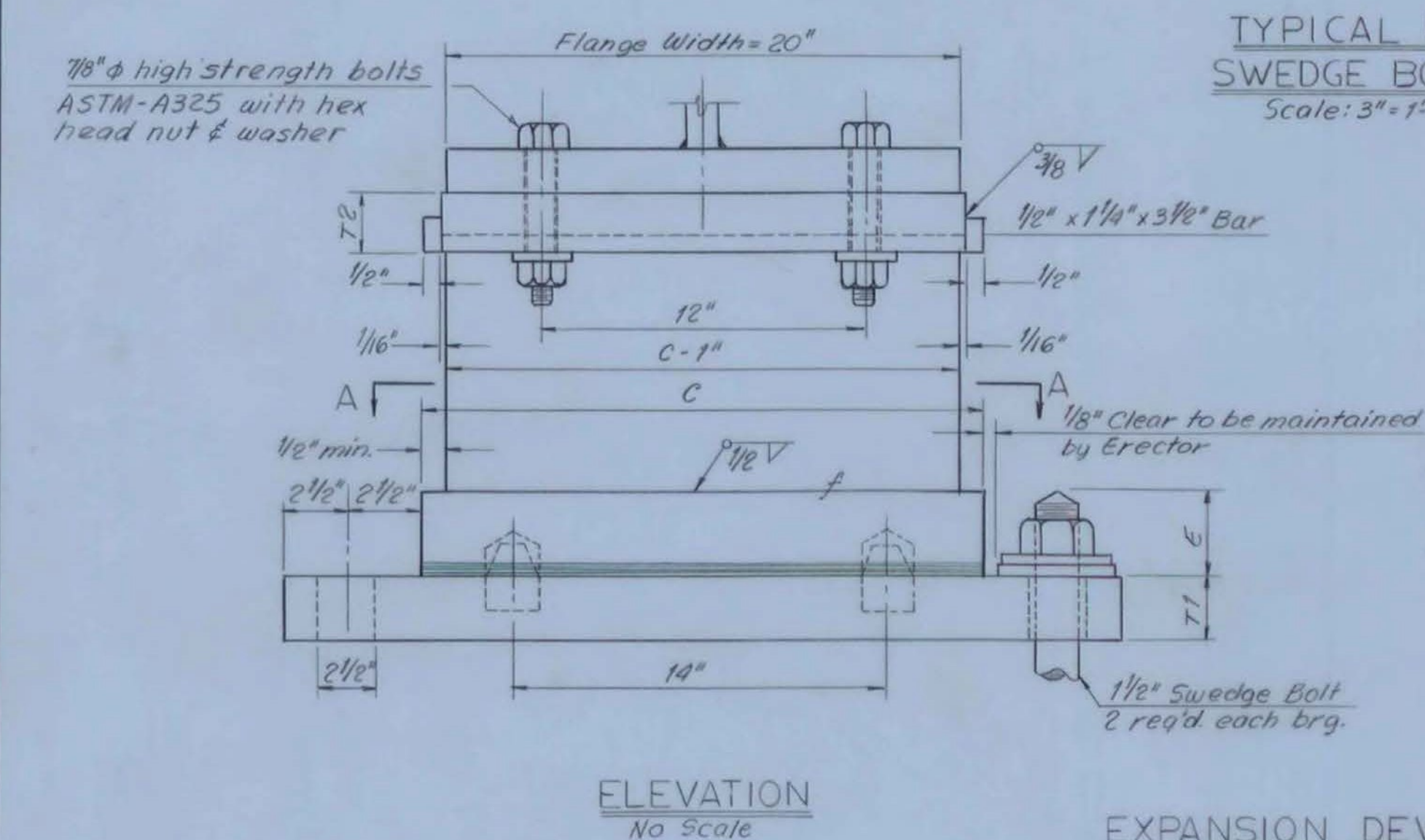


TYPICAL 1/2" SWEDGE BOLT Scale: 3"=1'-0"



- CURB AND RAILING NOTES**
- For details of granite bridge curb, see BR 507
 - For details of bridge railing, see Std. Sh. SB-R1-64 and SB-R2-65.
 - The ends of the granite curb shall be sawed square against the expansion plate and where Item 37E-C is to be used.
 - Straight sections of curb shall be in random lengths of 4 to 10 feet.
 - Detailed drawings for the layout of the granite curb (Item 556-C) shall be submitted in triplicate to the State for approval prior to fabrication or shipment.
 - Provide for 2" movement in the rail panel over the roadway expansion joint.

DIMENSIONS (INCHES)

Location	Fixed or Expansion	Max. Reaction (K)	A	B	C	D1	D2	E	F	G	T1	T2	R1	R2	R3	H
Abut. No. 1	Fix.	16762	8	31	20	-	-	-	-	2 1/2	2	2	-	1 3/8	1 1/16	11 3/4
Abut. No. 2	Exp.	16762	8	31	21	1 1/2	1	2	5	2 1/2	2	2	7	1 3/8	1 1/16	11 3/4
Abut. No. 3	Fix.	16762	8	31	20	-	-	-	-	2 1/2	2	2	-	1 3/8	1 1/16	11 3/4
Abut. No. 4	Exp.	16762	8	31	21	1 1/2	1	2	5	2 1/2	2	2	7	1 3/8	1 1/16	11 3/4

- BEARING NOTES**
- For General Notes, see BR 501.
 - All steel other than bolts, nuts and washers to be ASTM-A36 Steel. 7/8" high strength bolts to be ASTM-A325.
 - All bearing pads are to meet AASHTO Specifications 2.10.3. (K) (1/8" thick). Prior to placing pads, each bearing area shall be inspected by the Engineer to assure a flat and smooth masonry contact surface. Any irregularity exceeding 1/16" shall be corrected, and if necessary, the whole bearing area shall be ground to obtain full bearing.
 - Rockers are to be set vertical @ 45°F. Allowable tolerance equals 1/16" in height of rocker.
 - Contact surfaces of rockers are to be given a shop coat of white lead and tallow. Pintle holes are to be filled with graphite at the time of placement. The remainder of the bearing device will be given three (3) coats of paint in accordance with Vermont Specifications, Section 404.03, and Section 404.05 B.
 - All welding shall conform to the current specifications for Welded Highway and Railway Bridges of the American Welding Society.

**FAIR HAVEN - WEST RUTLAND
BF MEMB (35)
SHEET 16 OF 44
BRIDGE NOS. 5E AND 5W
FOR REFERENCE ONLY**

OVER VI. ZZA RELOC.

SUPERSTRUCTURE DETAILS

McFARLAND-JOHNSON
CONSULTING ENGINEERS
BINGHAMTON, NEW YORK

DESIGNED MJP	CHECKED EEC	DATE 5-23-68
DRAWN EMG	IN CHARGE HGC	SCALE As shown

PROJECT NO. F020-(14) SH/88 OF 632
CONTRACT NO. BR 509