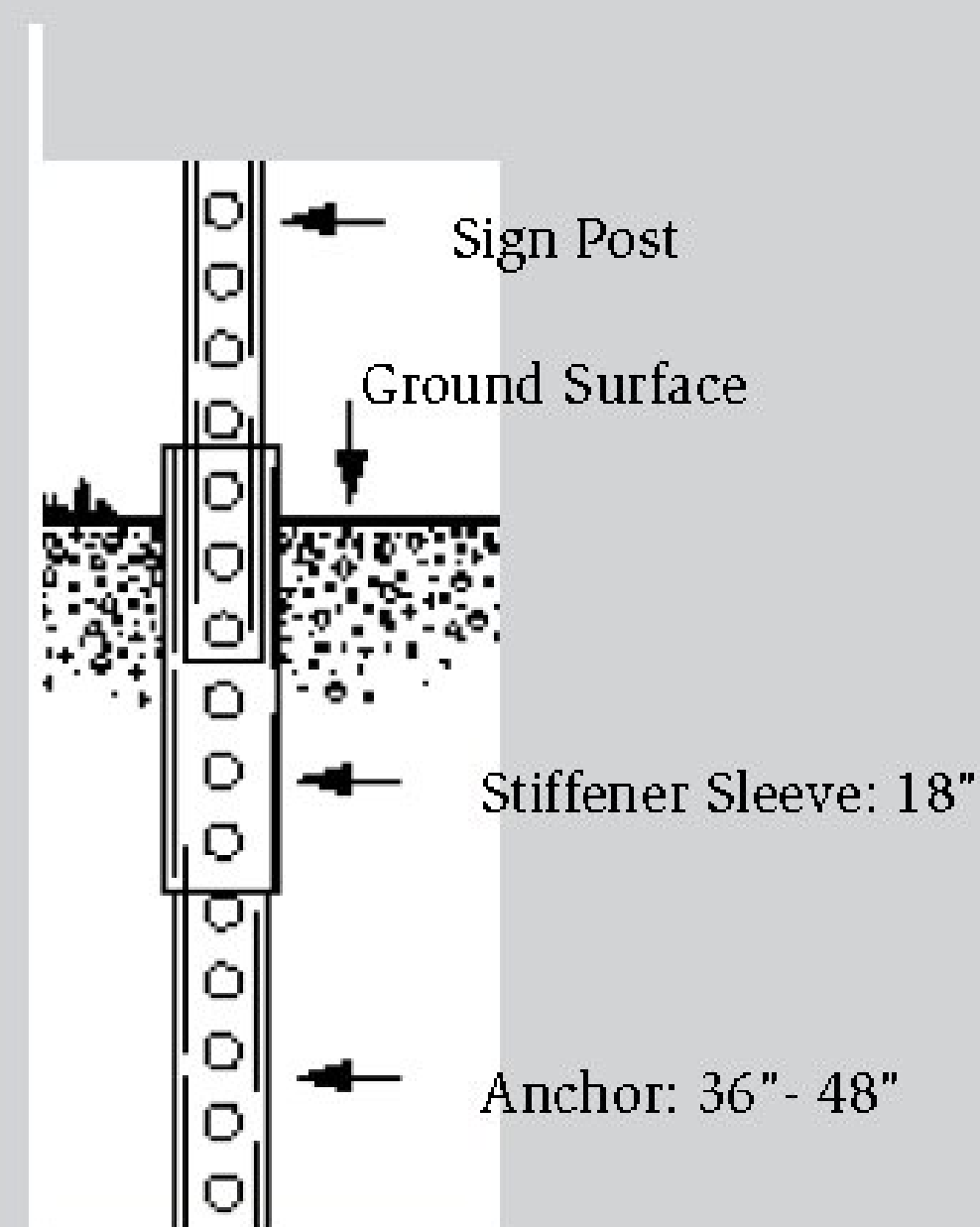


Galvanized Square Posts

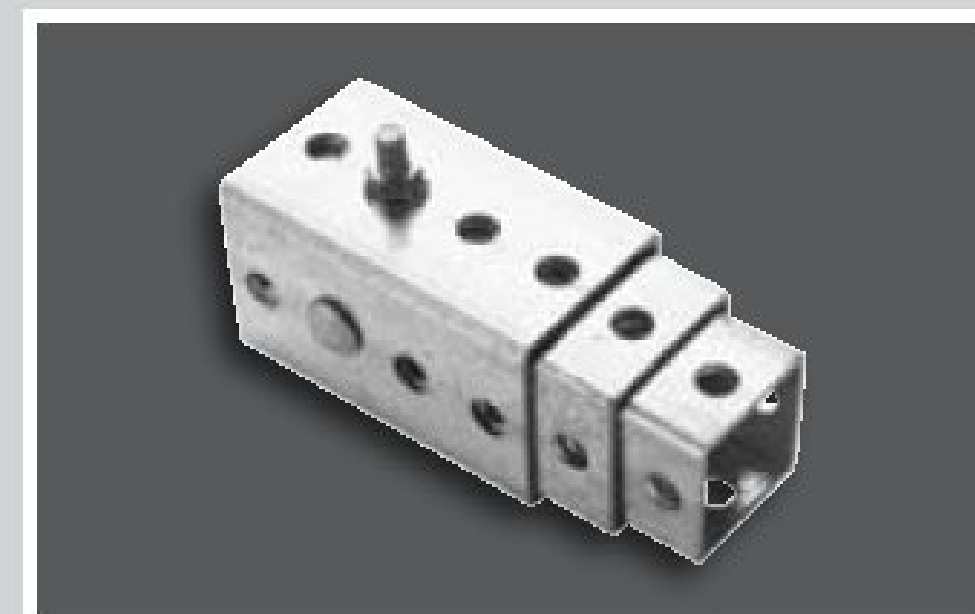
TAPCO stocks many perforated post lengths in 12 gauge and 14 gauge wall thicknesses. Posts are also available in 20' and 24' master lengths, or they can be cut to your specifications. Earth anchors are available in 3 foot and 4 foot lengths, or cut your own.

Perforated posts have 7/16" diameter holes on 1" centers that run the full length of the post on all four sides. Unperforated posts (solid and quick-punch) can be special ordered.



Anchor / Sleeve	Length	Gauge In	Item #
2" x 2"	36"	12 .105	1603-7
2-1/4" x 2-1/4"	18"	12 (.105)	2793-7
2-1/4" x 2-1/4"	36"	12 (.105)	1603-8
2-1/4" x 2-1/4"	48"	12 (.105)	54-38
2-1/2" x 2-1/2"	18"	12 (.105)	54-32

Post Size	Length	Gauge In	Item #
1-1/2" x 1-1/2"	10'	14 (.75)	2793-8
1-3/4" x 1-3/4"	10'	12 (.105)	1603-14
1-3/4" x 1-3/4"	10'	14 (.075)	1603-5
1-3/4" x 1-3/4"	12'	12 (.105)	1603-15
1-3/4" x 1-3/4"	12'	14 (.075)	1603-6
2" x 2"	8'	14 (.075)	54-43
2" x 2"	8'	12 (.105)	2793-6
2" x 2"	10'	12 (.105)	1603-1
2" x 2"	10'	14 (.075)	1603-3
2" x 2"	12'	12 (.105)	1603-2
2" x 2"	12'	14 (.075)	1603-4
2" x 2"	14'	12 (.105)	2793-1
2" x 2"	16'	12 (.105)	2793-2
2" x 2"	24'	12 (.105)	2793-4
2-1/4" x 2-1/4"	12'	12 (.105)	1603-16
2-1/2" x 2-1/2"	12'	12 (.105)	1603-17



Nested post anchor systems

TAPCO perforated square posts can be nested within each other to make a signpost anchoring system, **or choose a V-Loc anchor for square posts from the V-Loc section.** To allow for fast replacement and breakaway safety, install anchor into the ground and insert the next smaller size into it. Then secure the posts with nut and bolt.

Galvanized Post Cap

For Tube Size 2" x 2" (2793-5)

For Tube Size 2-1/2" x 2-1/2" (649-22)

Aluminum Post Cap

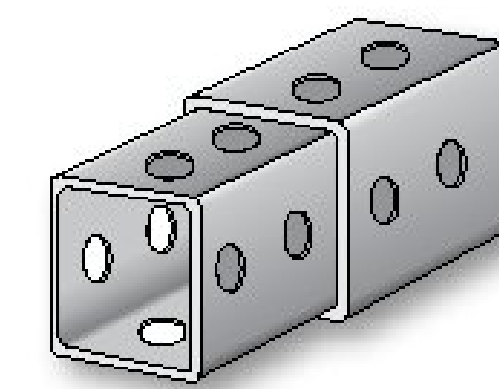
For Tube Size 2" x 2" (37-4)

Corner Bolt

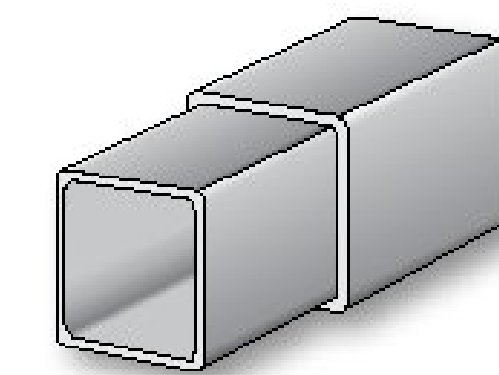
For Square Posts = / < 2" (1603-12)

For Square Posts 2" to 2-1/2" (1603-13)

Accessories
for Square
Steel Posts



With Perforations (See table).



Without Perforations
by Special Order.



Driving Caps

Driving Caps protect the end of the post or support anchor when being driven into the ground. Engineered to fit inside post size indicated in table.

For Post Size	Weight	Item Number
1-1/2" x 1-1/2"	3.7 lbs.	(649-12)
1-3/4" x 1-3/4"	5.2 lbs.	(1603-9)
2" x 2"	6.9 lbs.	(1603-10)
2-1/4" x 2-1/4"	9.0 lbs.	(649-13)
2-1/2" x 2-1/2"	11.0 lbs.	(649-14)



Heavy Jam
Nut
Zinc plated.
5/16" diameter

(3177-1)



Drive Rivets
for Signs
3/8" diameter

(1603-11)