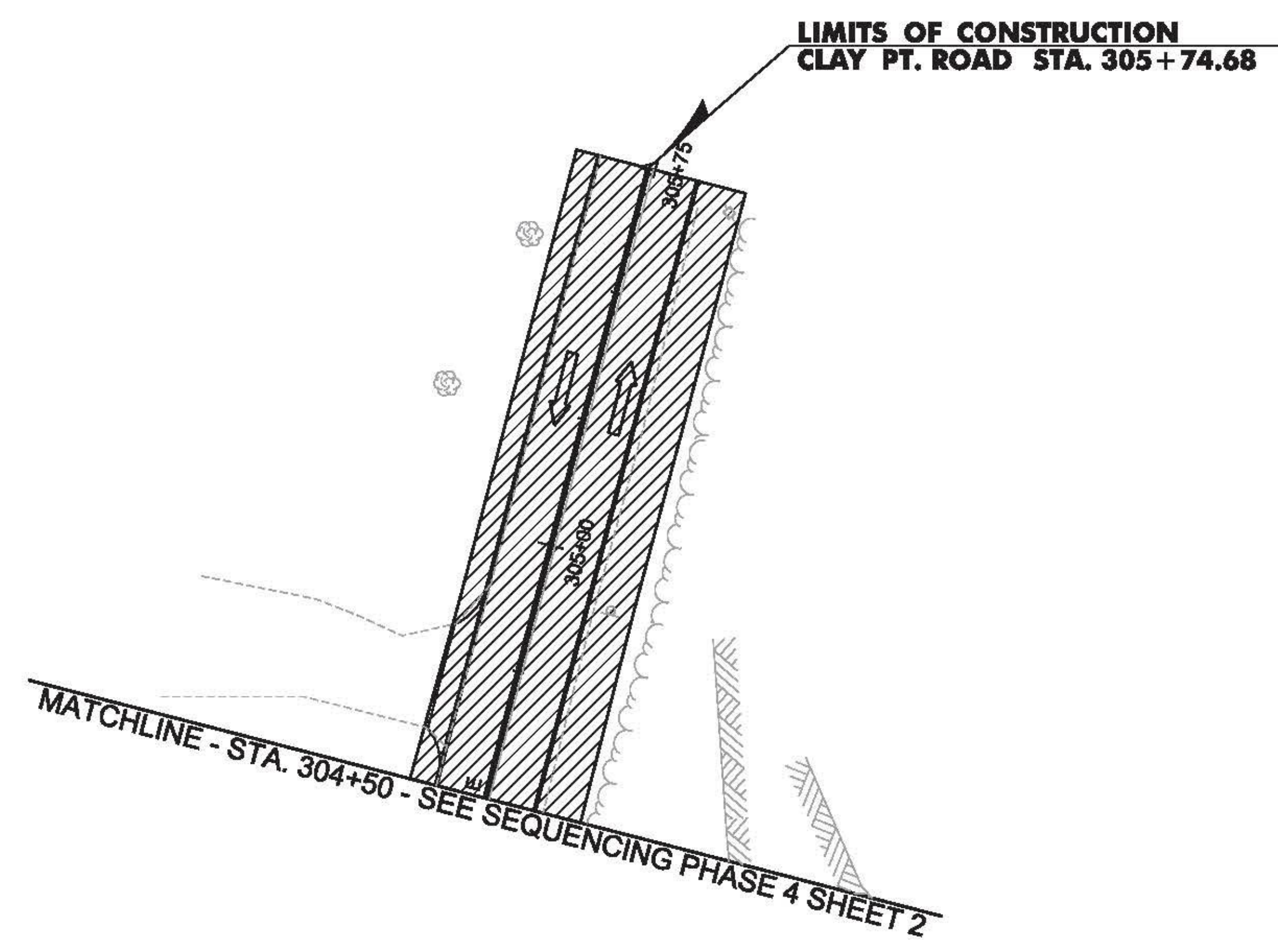
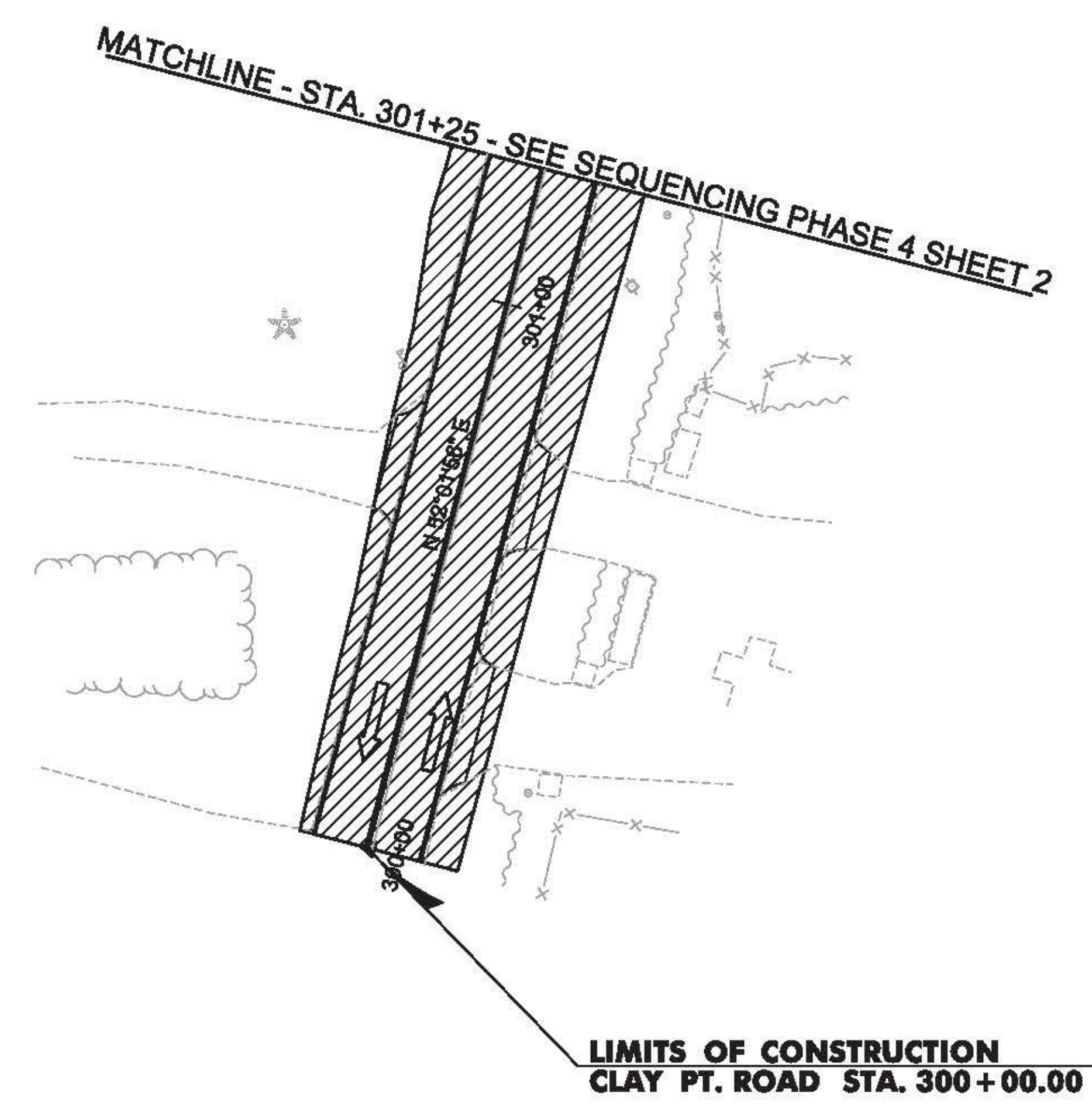
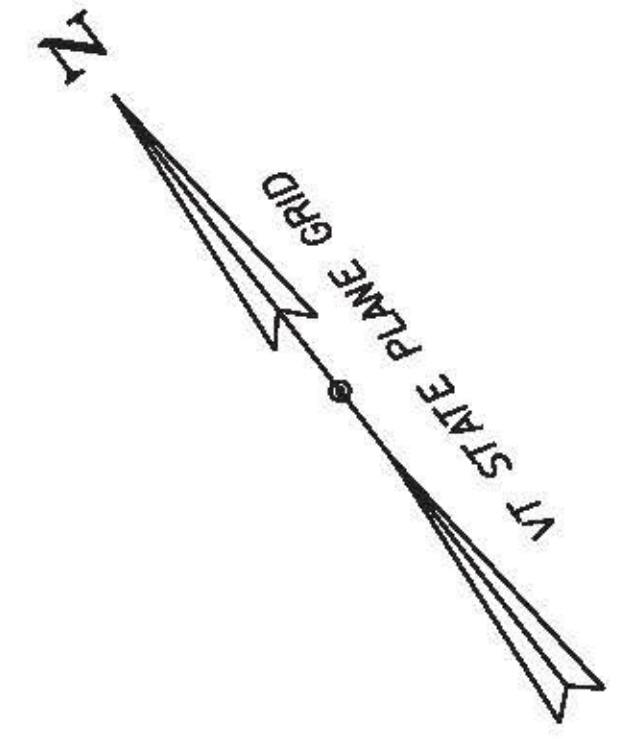


POTENTIAL ACTIVITIES ASSOCIATED WITH CONSTRUCTION PHASING



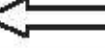
1. COLD PLANE CLAY POINT ROAD IN PREPERATION FOR 2 INCH OVERLAY OF NEW SUPERPAVE BITUMINOUS CONCRETE PAVEMENT.
2. COMPLETE ALL NECESSARY ENVIRONMENTAL CLEAN UP AFTER PAVING OPERATIONS ARE COMPLETE.

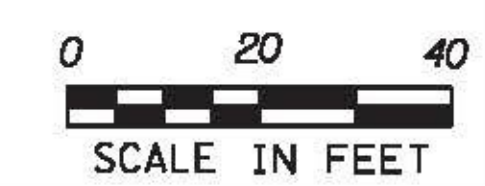
NOTES:

1. FOR TRAFFIC CONTROL GENERAL NOTES, SEE TRAFFIC CONTROL GENERAL NOTES AND DETAIL SHEET.
2. TEMPORARY LANE OR SHOULDER CLOSURES SHALL BE ALLOWED DURING WORKING HOURS, US ROUTE 2 AND CLAY POINT ROAD SHALL BE RESTORED TO TWO-WAY TRAFFIC AT THE CLOSE OF DAILY CONSTRUCTION ACTIVITIES.



LEGEND

	CONSTRUCTION AREA
	REFLECTORIZED PLASTIC DRUM
	FLOW OF TRAFFIC



PROJECT NAME: COLCHESTER	PLOT DATE: 12/15/2015
PROJECT NUMBER: HES 028-I(28)	DRAWN BY: M. BOGACZYK
FILE NAME: i13b028+cp.dgn	CHECKED BY: M. LACROIX
DESIGNED BY: M. BOGACZYK	CONSTRUCTION SEQUENCING PHASE 4 SHEET 5 SHEET 91 OF 91